

Offering Memorandum

# Premier Commercial Office & Warehouse Building

1674 Chatham Parkway, Savannah, GA 31405

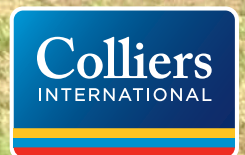


**PRESENTED BY:**

ASHLEY W. SMITH, SIOR, CCIM  
Colliers International | Savannah  
912 662 8011  
ashley.smith@colliers.com

**COLLIERS INTERNATIONAL**

545 E. York Street, Savannah, GA 31401  
912 233 7111  
912 236 1200



# Table of Contents

## > EXECUTIVE SUMMARY

Disclaimer ..... 4

## > PROPERTY OVERVIEW

Property Description ..... 6  
Retail Aerial ..... 7  
Traffic Count Aerial ..... 8  
Area Hospitals ..... 9  
Floor Plan ..... 10  
Site Plan ..... 11  
Market Demographics ..... 12  
Property Photos ..... 13

## > AREA INFORMATION

Savannah MSA Market Overview ..... 17  
Top 40 Employers Savannah ..... 19  
Savannah Economic Drivers ..... 20

### PRESENTED BY:

ASHLEY W. SMITH, SIOR, CCIM  
Colliers International | Savannah  
912 662 8011  
ashley.smith@colliers.com

### COLLIERS INTERNATIONAL

545 E. York Street, Savannah, GA 31401  
912 233 7111  
912 236 1200



# Executive Summary



## COMMUNICATION

All communication, inquiries and requests should be addressed to the Colliers International team, as representatives of the Seller. Management at the property should not be contacted directly.

## PROPERTY VISITS

Interested users/investors are required to schedule a time to meet with the Colliers International team to tour the asset and discuss the merits of the offering.

Please contact a member of the team below with any questions.

### COLLIERS INTERNATIONAL | SAVANNAH

545 E. York Street, Savannah, GA 31401

PHONE 912 233 7111

FAX 912 236 1200



**Ashley W. Smith, SIOR, CCIM**

PRINCIPAL | SAVANNAH

[ashley.smith@colliers.com](mailto:ashley.smith@colliers.com)

DIR 912 662 8011



**Meredith A. Fitzgerald**

MARKETING COORDINATOR

[meredith.fitzgerald@colliers.com](mailto:meredith.fitzgerald@colliers.com)

DIR 912 662 8015

## Dates of Importance

*PROPERTY TOUR DATES:* **Upon Request**

### DISCLAIMER

This Offering Memorandum is provided for the sole purpose of allowing a potential user/investor to evaluate whether there is interest in proceeding with further discussions regarding a possible purchase of or investment in the subject property (the "Property").

The potential investor is urged to perform its own examination and inspection of the Property and information relating to same, and shall rely solely on such examination and investigation and not on this Brochure or any materials, statements or information contained herein or otherwise provided. Neither Colliers International, nor any of its partners, directors, officers, employees and brokers ("Brokers"), make any representations or warranties, whether express or implied, by operation of law or otherwise, with respect to this Offering Memorandum or the Property or any materials, statements (including financial statements and projections) or information contained herein or relating thereto, or as to the accuracy or completeness of such materials, statements or information, or as to the condition, quality or fitness of the Property, or assumes any responsibility with respect thereto. Such materials, statements and information have in many circumstances been obtained from outside sources, and have not been tested or verified. Projections, in particular, are based on various assumptions and subjective determinations as to which no guaranty or assurance can be given.

Without limiting the foregoing, in the event this Offering Memorandum contains information relating to asbestos or any other hazardous, toxic or dangerous chemical, item, waste or substance ("Hazardous Materials") in relation to the Property, such information shall in no way be construed as creating any warranties or representations, expressed or implied, by operation of law or otherwise, by Brokers or the owner, as to the existence or nonexistence or nature of Hazardous Materials in, under, on or around the Property.

This Offering Memorandum is provided subject to errors, omissions, prior sale or lease, change of price or terms and other changes to the materials, statements and information contained herein or relating to the Property, and is subject to withdrawal, all without notice. The contents hereof are confidential and are not to be reproduced or distributed to any person or entity without the prior written consent of Brokers or used for any purpose other than initial evaluation as indicated above.

# Property Overview



# 1674 Chatham Parkway >

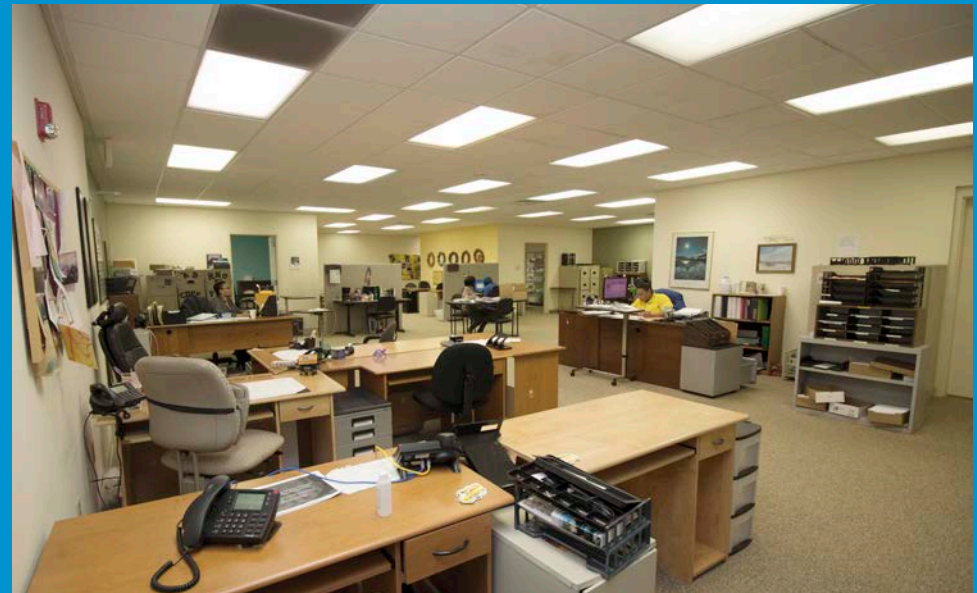
## PROPERTY DESCRIPTION

Address	1674 Chatham Parkway, Savannah, GA 31405
Gross Building Size (SF)	±31,159 SF
Office Component	±15,659 SF
Warehouse Component	±15,500 SF
Land Area	±4.72 Acres
Year Built	1987
Construction	Masonry construction with a flat roof.
Zoning	PUD-BR: Planned Unit Development, Business, Regional Center - a planned, multi-use development
Number of Stories	1
Assessor Parcel No.	2-0834-01-016

### Property Description

This property is ideally located with 388.44' of frontage on Chatham Parkway, only 600 yards from the intersection of Highway 17 and Chatham Parkway in Savannah, Georgia. It is part of phase 1 of the Parkway Business Center a planned regional business center. The building is a one-story professional office building and warehouse consisting of approximately ±31,159 SF, one part office in the front half of the building and another part warehouse in the back of the building. Built in 1987 the building remains in good condition and is currently occupied and owned by Hospice Savannah Inc. (relocating) in the office portion of the building. Hospice Savannah leases the warehouse portion of this building to a medical device supplier (relocating). The property also includes a ±3,622 SF service garage located behind the main building.

**Pricing** **\$2,750,000**



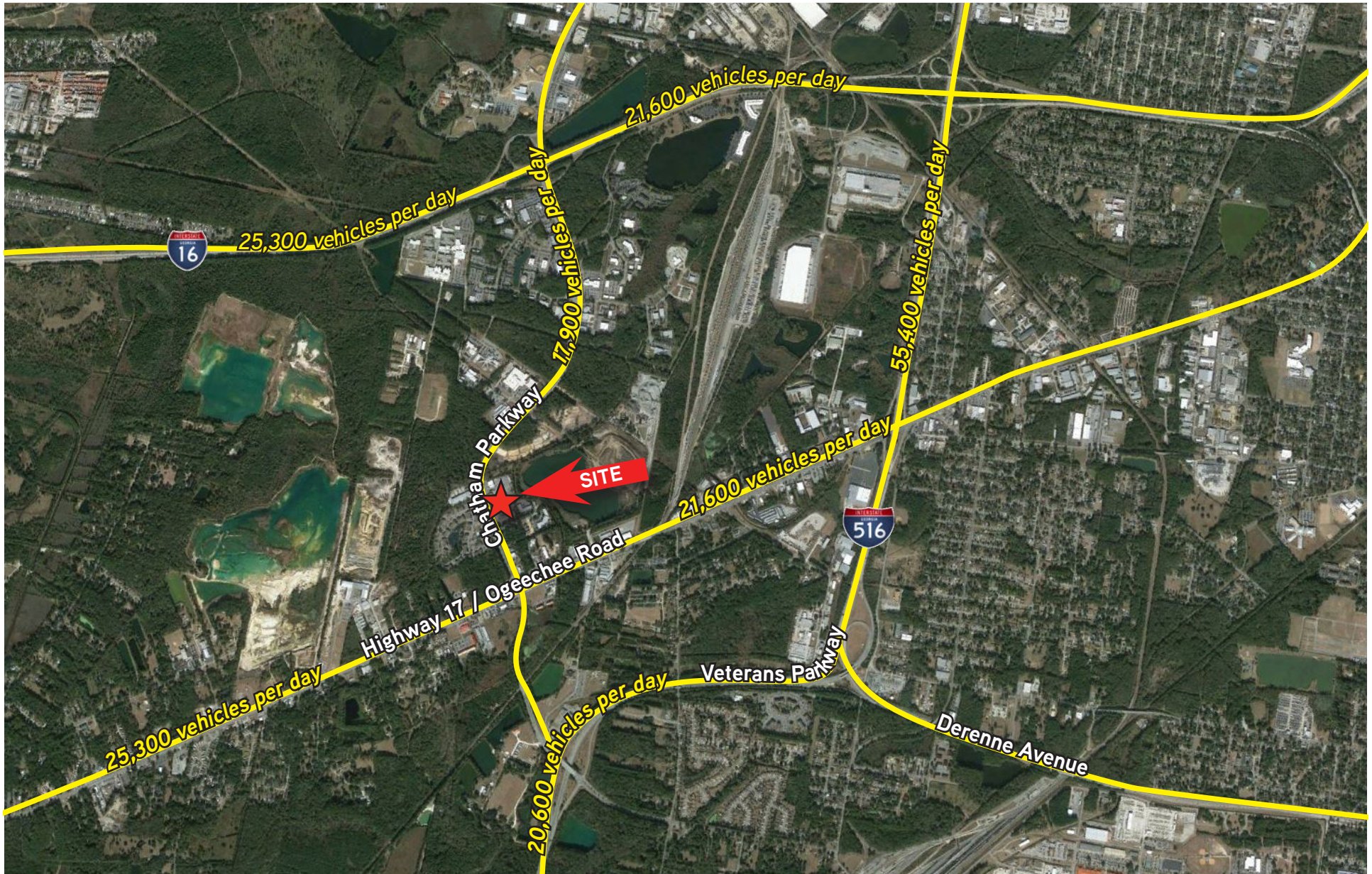
# 1674 Chatham Parkway >

## RETAIL AERIAL



# 1674 Chatham Parkway >

## TRAFFIC COUNT AERIAL (GDOT 15)

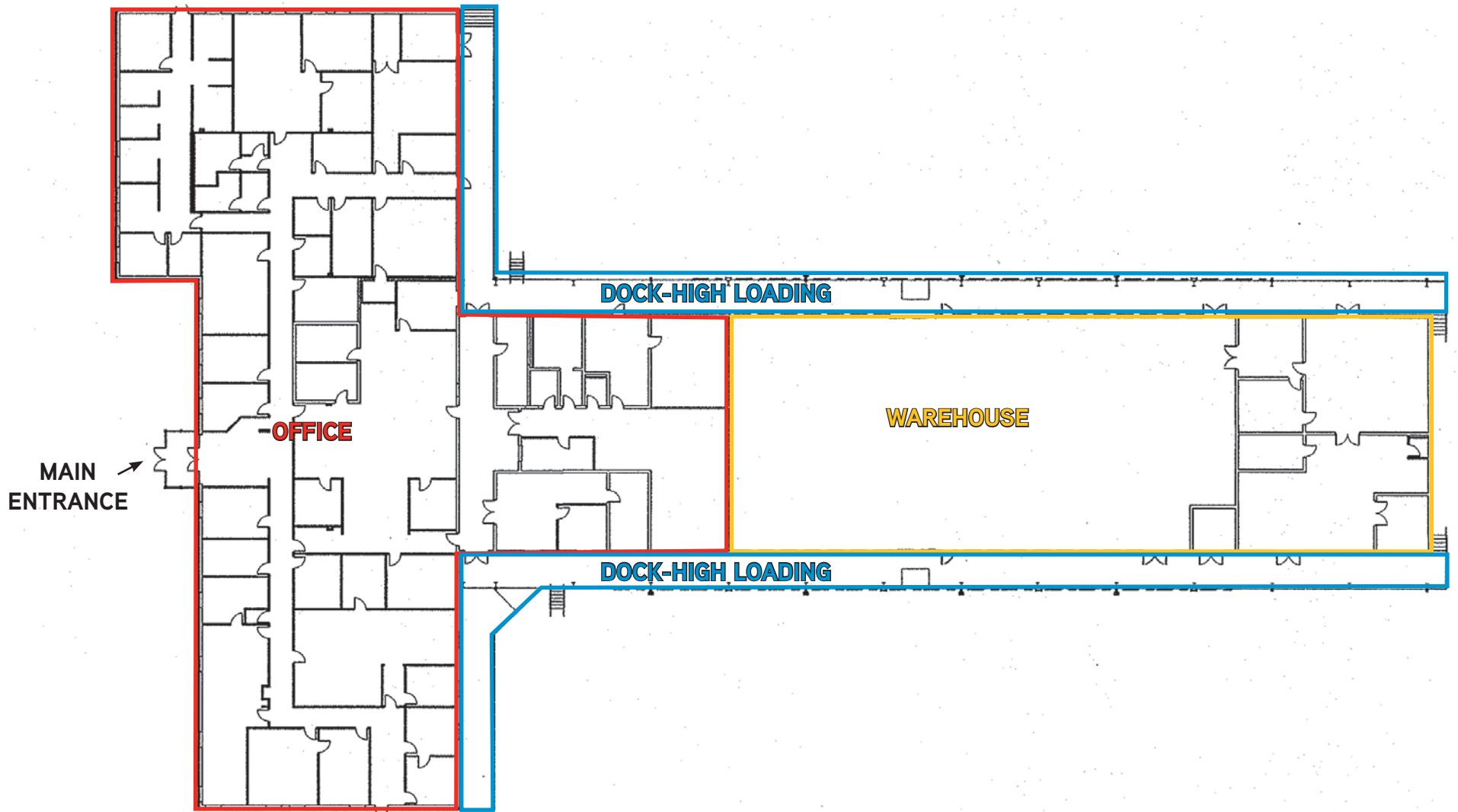


# 1674 Chatham Parkway >

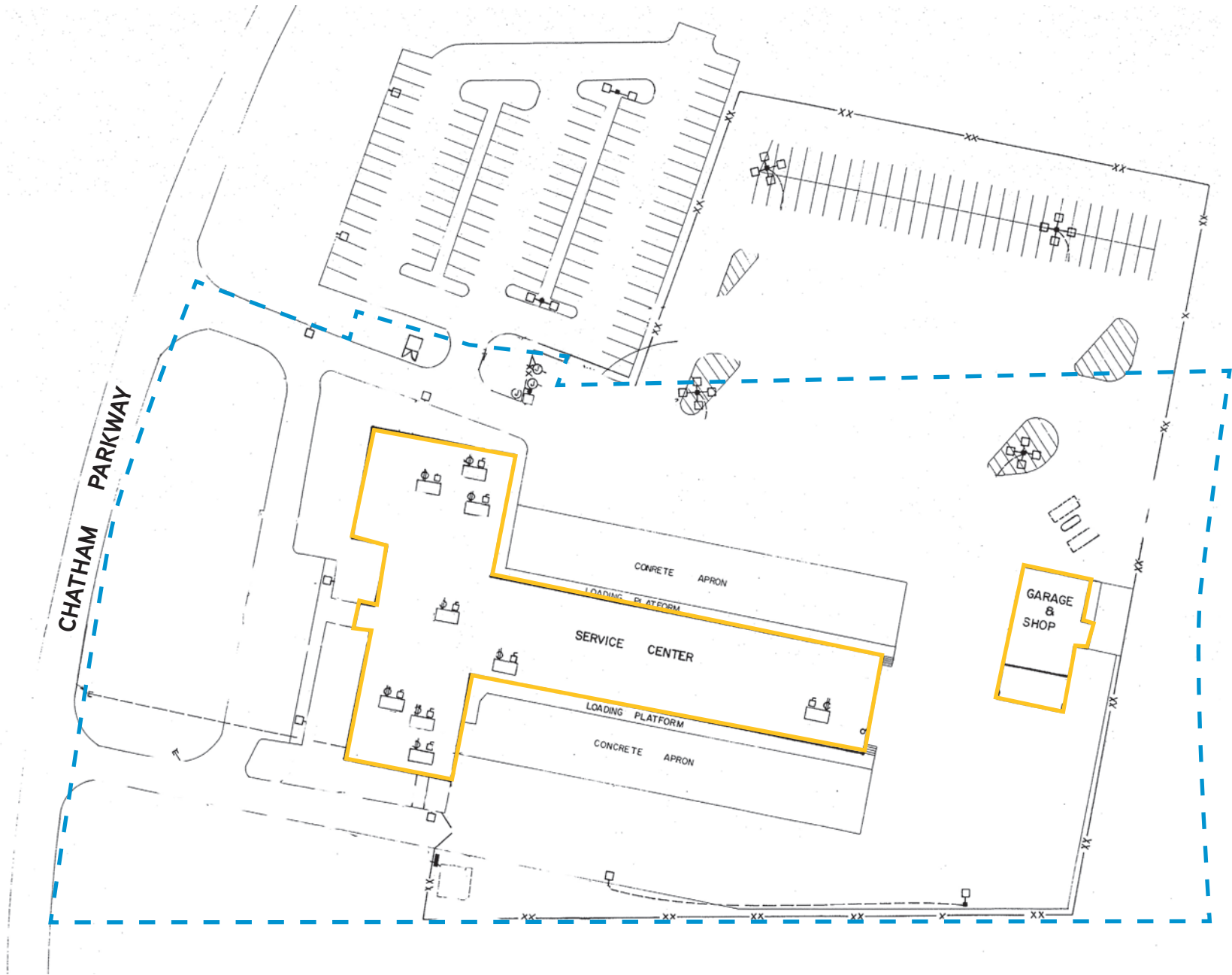
## AREA HOSPITALS



# Interior Floor Plans >



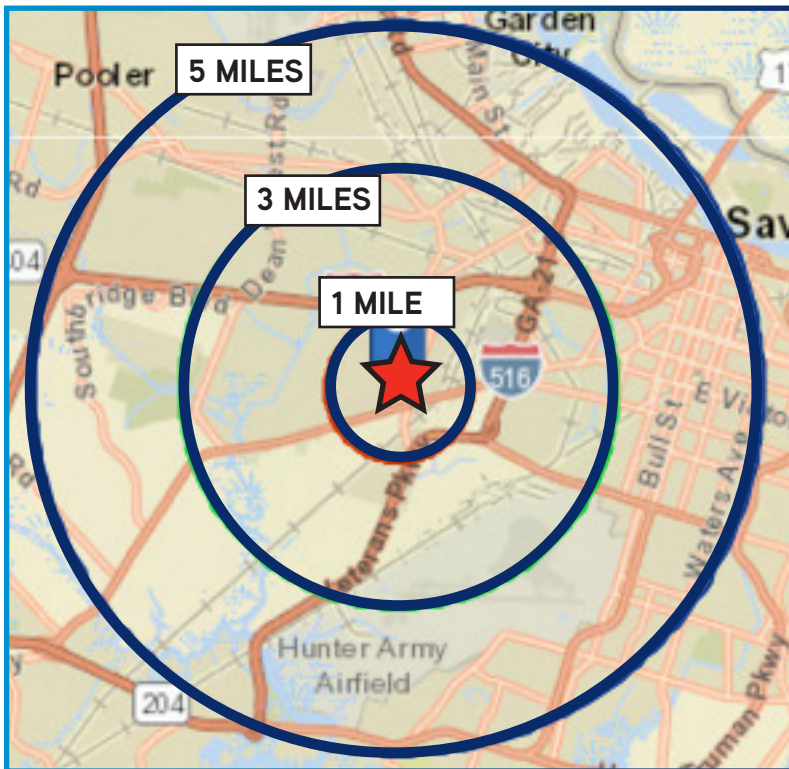
# Site Plan >



# Market Demographics >

## DEMOGRAPHICS US CENSUS BUREAU 2016

	1 MILE RADIUS	3 MILES RADIUS	5 MILE RADIUS
POPULATION:	2,749	22,255	112,697
HOUSEHOLDS:	426	7,450	43,140
AVG. HOUSEHOLD INCOME:	\$51,909	\$48,819	\$50,509
TOTAL NUMBER OF BUSINESSES:	257	1,370	8,481



# Property Photos >

## EXTERIOR



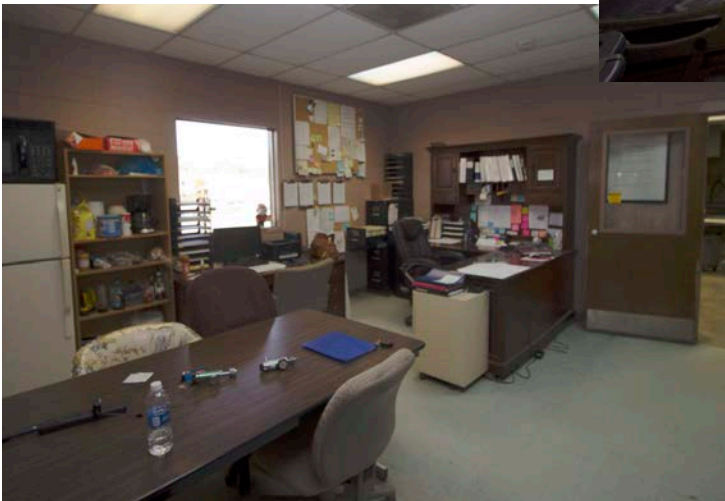
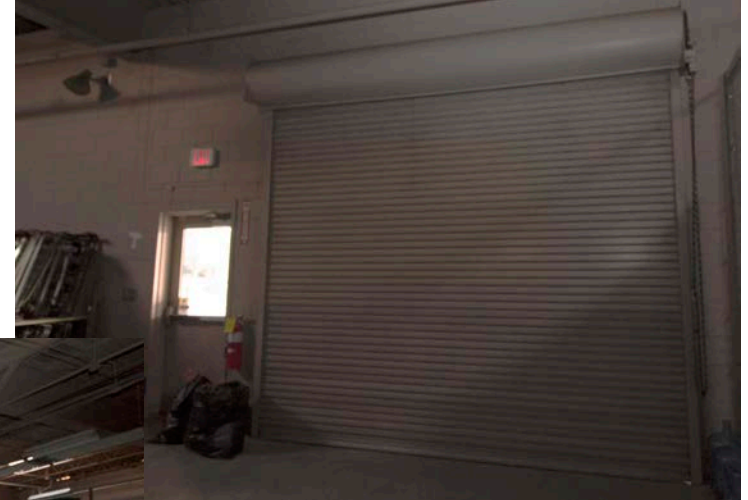
# Property Photos >

## INTERIOR



# Property Photos >

## WAREHOUSE



# Area Information



# Savannah MSA Market Overview >



## Savannah Area Overview

The Savannah, GA MSA is located in the far-east portion of the State of Georgia, along the east coast. The MSA is comprised of Chatham, Bryan, and Effingham Counties. The City of Savannah is the primary city within the MSA and it is the oldest city in the State of Georgia.

Chatham County is bordered by Effingham and Jasper Counties to the north, Bryan County and the Atlantic Ocean to the south, the Atlantic Ocean to the east, and Bryan County to the west. In Chatham County, the City of Savannah is located in the northern portion of the county, and serves as the county seat. Atlanta serves as the state capital and is located approximately 250 miles northwest of Savannah. Savannah is approximately 130 miles south of Columbia, SC, 250 miles southwest of Atlanta, GA, 125 miles north of Jacksonville, FL, and 220 miles northeast of Tallahassee, FL.

At the end of the 4th Quarter of 2016 Armstrong State University reported that the Savannah-metro economy continued on its path of strength through the end of 2015 with Gross Regional Product growing by 4.7% - "the GRP is the measure of the market value of final goods and services produced within a metropolitan area in a particular period of time" (Savannah Area Chamber of Commerce - 2017 Economic Trends, Armstrong State University). Nearly all coincident economic indicators advanced, these indicators reflect broadly based measures of economic strength, further supported by key fundamental components of the regional economy.

The Coastal Empire leading economic index accelerated for the second consecutive quarter to close out the second half of the year strongly. The housing market continued to improve along with the labor market, while gains in consumer expectations continued. Sustained growth at a healthy pace is expected through late 2015.



## Demographics

According to ESRI, a Geographic Information System (GIS) Company, the metropolitan area of Savannah, GA had a 2016 total population of 381,794 and has experienced an annual growth rate of 1.51% since 2010, which is higher than the Georgia annual growth rate of 0.89% over this time frame. The metropolitan area accounts for 3.7% of the total Georgia population of 10,237,832 people. The 2016 median age for the Savannah MSA is 35.5 which is younger than the United States median age of 38.

Savannah continues to be an important economic engine for the state and the center of the Georgia coastal region. Among its strengths are its attraction as a tourist destination, low-cost of living, an expanding airport, innovative educational options, and its cargo ports which are among the largest in the nation. In addition, Fort Stewart helps to bring significant economic contributions - with over 27,000 people consisting of soldiers, family members, and civilians.

## Household Trends

The 2016 number of households in the metropolitan area is 143,036. The number of households in the metropolitan area is projected to grow by 1.44% annually over the next five years, raising the number of households to 153,662 by 2021, average household size for the metropolitan area is 2.57. The 2015 median household income for the metropolitan area is \$50,262, median household income is projected to grow to \$56,412 by 2021. Average household income shows a slightly larger number at \$68,394 for 2016, growing to \$75,525 by 2021, compared to the US average household income of \$84,021 this number is slightly low but compared to the state of GA at \$70,633 we see that the Savannah metropolitan area has a strong income base, this combined with a low-cost of living creates a good environment for economic spending and growth.

# Savannah MSA Market Overview >



## Education

Savannah has four colleges and universities offering bachelor's, master's, and professional or doctoral degree programs: Armstrong Atlantic State University, Savannah College of Art and Design (SCAD), Savannah State University, and South University. In addition, Georgia Tech Savannah offers engineering degrees, and Georgia Southern University, with its main campus in Statesboro, has a satellite campus in the downtown area. Savannah Technical College, a two-year technical institution, and the Skidaway Institute of Oceanography, a marine science research institute located on the northern end of Skidaway Island, offer educational programs as well. Savannah is also the location of Ralston College, a liberal arts college founded in 2010.

Mercer University began a four-year doctor of medicine program in August 2008 at Memorial University Medical Center. Mercer, with its main campus in Macon, received additional state funding in 2007 to expand its existing partnership with Memorial by establishing a four-year medical school in Savannah (the first in southern Georgia). Third- and fourth-year Mercer students have completed two-year clinical rotations at Memorial since 1996; approximately 100 residents are trained each year in a number of specialties.

In late 2016 the Georgia Board of Regents announced the merge of Georgia Southern University based out of Statesboro, GA with Armstrong State University set to take place in Fall 2018. The schools will consolidate and officially take the name Georgia Southern University. This act will make Georgia Southern University the States fourth largest institution with about 27,000 students, while also helping to conserve state funding.

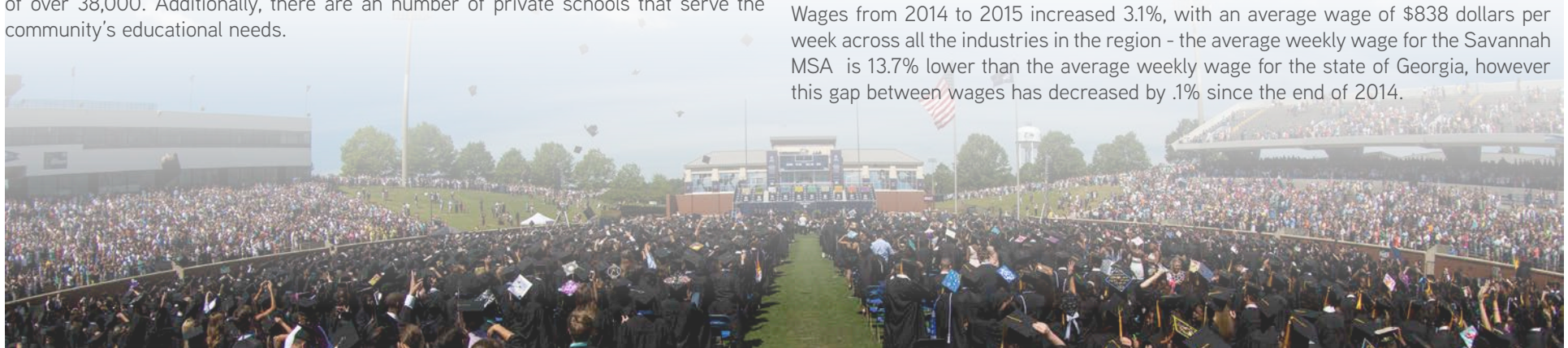
The Savannah-Chatham Public School System has a total 53 schools with enrollment of over 38,000. Additionally, there are an number of private schools that serve the community's educational needs.

## Employment

According to the Savannah 2017 Economic Trends publication by the University of Georgia - Terry College of Business, the Savannah Area Chamber, and Armstrong State University, employment in the Savannah Metropolitan Statistical Area (MSA) and the Combined Statistical Area (Savannah/Hinesville/Statesboro - CSA) increased in 2016 by 7,913 jobs, this is a 3.5% increase in the CSA labor force, the MSA alone saw 6,600 jobs added to the economy this is a 4% gain over 2015. The Savannah MSA unemployment rate decreased from 5.6% in 2015 to 5% (through September 2016), this is slightly below the overall unemployment rate for Georgia of 5.2%.

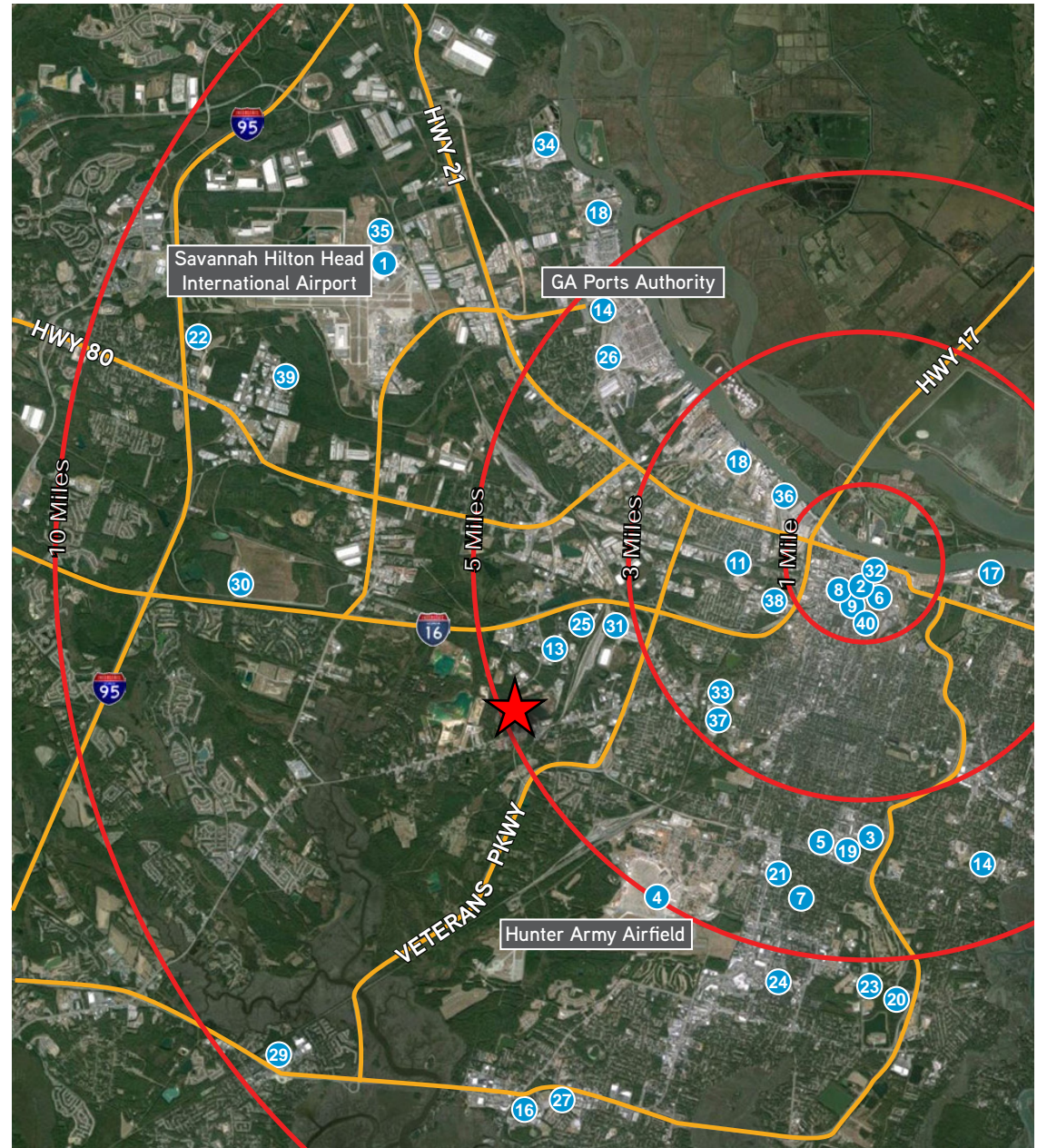
With the drop in the unemployment rate came the 3.4% increase in the total number of workers in the Savannah MSA workforce, bringing the total number of workers to 177,600 in 2016. Employment growth was realized across all sectors of the economy with the exception of the Construction and Mining industries which realized a slight drop in the number of workers employed by these industries, -200 jobs in the construction industry and -100 jobs in mining. The largest employing segment of the Savannah MSA economy, employing 15.2% of local workers is the leisure and hospitality sector, with employment growing by 35% over the last six (6) years, this sector alone employs over 27,000 workers in the Savannah MSA. Impressive as this may be it is not alone in its support of the local economy and workforce as other segments of the economy employ large numbers of worker as well including the education and health service sector employing 14.6% of the workforce, state and local government employing 12.2% of the workforce, and professional/business services and the retail trade sectors each prospectively employing 11.7% of the workforce. This industry diversity lends itself to a strong and healthy local economy that is able to weather normal cyclical downturns in the economy.

Wages from 2014 to 2015 increased 3.1%, with an average wage of \$838 dollars per week across all the industries in the region - the average weekly wage for the Savannah MSA is 13.7% lower than the average weekly wage for the state of Georgia, however this gap between wages has decreased by .1% since the end of 2014.



# Top 40 Employers - Savannah > (Source: Savannah 2017 Economic Trends)

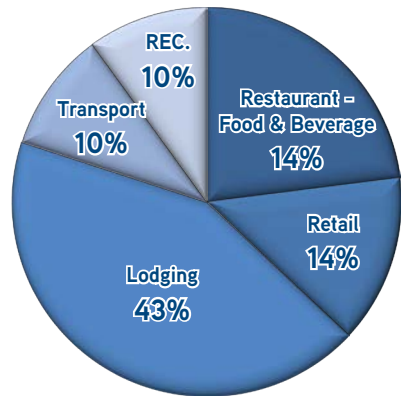
#	COMPANY	EMPLOYEES	TYPE
1	Gulfstream Aerospace Corporation	9,878	Manufacturing
2	Savannah-Chatham Board of Education	5,654	Education
3	Memorial University Health Center	5,000	Healthcare
4	Ft. Stewart/Hunter Army Airfield	4,000	Military
5	St. Joseph's/Candler Health System	3,100	Healthcare
6	City of Savannah	2,616	Government
7	YMCA of Coastal Georgia	1,980	Civic Assoc.
8	Chatham County	1,716	Government
9	Savannah College of Art & Design	1,309	Education
10	Kroger (Not Mapped)	1,000-4,000	Retail/Food
11	Marine Terminals Corp.	1,000-4,000	Distribution
12	McDonalds (Not Mapped)	1,000-4,000	Restaurant
13	SSA Cooper	1,000-4,000	Distribution
14	Georgia Ports Authority	988	Ship Terminal
15	Publix (Not Mapped)	983	Retail/Food
16	Armstrong State University	903	Education
17	Georgia-Pacific Savannah River Mill	900	Manufacturing
18	International Paper	661	Manufacturing
19	SouthCoast Health	661	Healthcare
20	Georgia Regional Hospital	650	Healthcare
21	Coastal Home Care Inc.	617	Healthcare
22	JCB Americas, Inc.	540	Manufacturing
23	Goodwill Industries of the Coastal Empire	500	Nonprofit
24	Trace Staffing Solutions	500	Service
25	UTC Overseas	500	Distribution
26	Ceres Marine Terminals	500	Distribution
27	Georgia Power Company - Coastal Region	483	Electric Utility
28	The Landings Club (Not Mapped)	440	Service
29	Brasslers USA	405	Manufacturing
30	Mitsubishi-Hitachi Power Systems of America	320	Manufacturing
31	CSX	308	Distribution
32	TMX Finance	302	Service
33	Strength of Nature Global	300	Manufacturing
34	Weyerhaeuser	285	Manufacturing
35	Walmart	285	Retail
36	Colonial Group	275	Energy
37	Derst Baking Co.	274	Manufacturing
38	Chatham Steel Corporation	265	Manufacturing
39	Diamond Crystal Brand	250	Manufacturing
40	Kerry Ingredients and Flavors	230	Manufacturing
<b>TOTAL</b>		<b>51,828 Employees</b>	



# Savannah Economic Drivers >



## Total Overnight Spending by Sector | Savannah



*"The largest employing segment of the Savannah MSA economy, employing 15.2% of local workers is the leisure and hospitality sector..."*

## Tourism

The 2017 Savannah Economic Trends publication from Armstrong State University reports that the tourism industry contributed significantly to the strength of the regional economy throughout 2015. The hostess city welcomed over 13.7 visitors in 2015 alone and total visitor spending was approximately \$2.67 billion with the largest portion of that revenue coming from lodging expenses. Seasonally and inflation adjusted hotel and motel room receipts increased 2.6% from the amount of overnight person-stays in 2017 (7.6M) to 7.8 million. Hotel room demand increased 3% in 2015, visitor direct-spending also increased from 2.5 billion to 2.7 billion.

Nightly person-stays increased over 100,000 from 2015 to 3.7 million, reflecting strong tourism growth which has powered into 2016 on the heels of an exceptionally strong 2015. The center of the tourist's draw is the Historic District of Savannah, which includes River Street, City Market and a number of other cultural activities and attractions. Savannah's busiest months for visits from tourists are April, May, and June, although with Georgia's favorable climate year-around tourism activity is spread out consistently across the year.

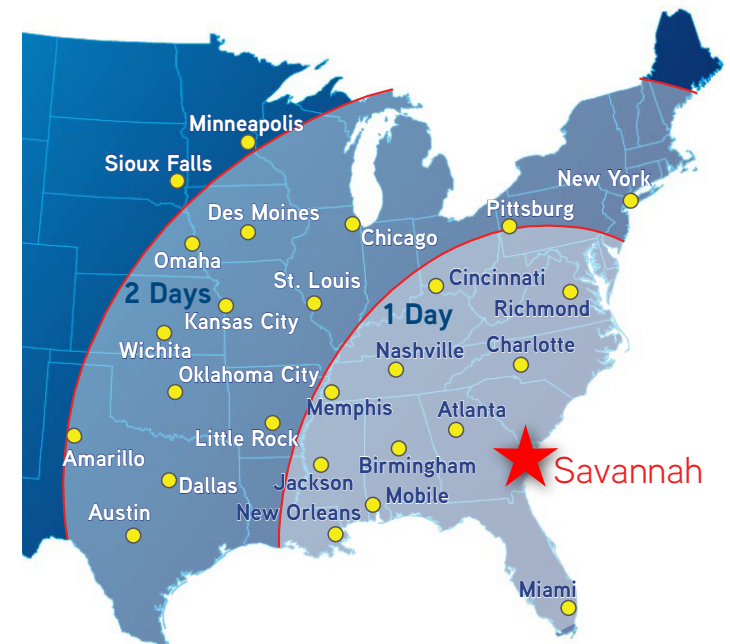
## Hunter Army Airfield

Hunter Army Airfield extends from the west side of White Bluff Road several miles to the west. The 5,400-acre military post is site of the Army's longest runway, and employs some 5,100 soldiers and civilians. In addition, in the Savannah MSA alone there are more than 27,000 active military personnel, contractors, and civilian support staff. Further west is Fort Stewart, the largest Army installation east of the Mississippi River. Together, these bases are one of Coastal Georgia's largest employers with an annual financial impact of approximately \$4.9 billion according to the Savannah Area Chamber of Commerce.

## Port of Savannah

Savannah is home to the Port of Savannah, the largest single-terminal container facility of its kind in North America. Operated by the Georgia Ports Authority and specializing in breakbulk, containers, RoRo, heavy-lift and project cargo, the port is comprised of two modern, deep water terminals: Ocean Terminal (200 Acres) and Garden City Terminal (1,200 Acres). The Georgia Ports Authority reports that The Port of Savannah is the fastest-growing and fourth-largest port in the nation, with more than 70 percent of the population reachable within a two-day drive. In fiscal year 2016, the Georgia Ports Authority moved more than 25.7 million tons of cargo, 1.7 million Ro/Ro Tons, and 2.5 million in bulk tons (source: www.gaports.com).

In 2014, the Savannah Harbor Expansion Project (SHEP) was authorized to begin construction to deepen the harbor from 42 feet to 47 feet (average low tide) from the ocean upstream to the Georgia Ports Authority's Garden City Terminal through the Water Resources Reform and Development Act of 2014. Completion is expected in early 2018. In addition, the Port of Savannah has planned investments of the next decade of \$1.4 billion. This additional depth, combined with a 7-foot tide, will result in transportation cost savings by allowing larger Post-Panamax vessels to operate more efficiently and experience fewer delays.



**Savannah: 70% of the U.S. population can be reached from Savannah within a two-day drive**

Source: Savannah Economic Development Authority

# 1674 Chatham Parkway

## Savannah, GA 31405

### CONTACT DETAILS

**ASHLEY W. SMITH, SIOR, CCIM**

912 662 8011

[ashley.smith@colliers.com](mailto:ashley.smith@colliers.com)

LICENSE NO: 251860

**Colliers International | Savannah**

545 E. York Street

Savannah, GA 31401

LICENSE NO: H-61706

[www.colliers.com](http://www.colliers.com)



Colliers International, and certain of its subsidiaries, is an independently owned and operated business and a member firm of Colliers International Property Consultants, an affiliation of independent companies with over 502 offices throughout more than 67 countries worldwide. Information contained herein has been obtained from the owner of the property or other sources that we deem reliable. We have no reason to doubt its accuracy, but we do not guarantee it.