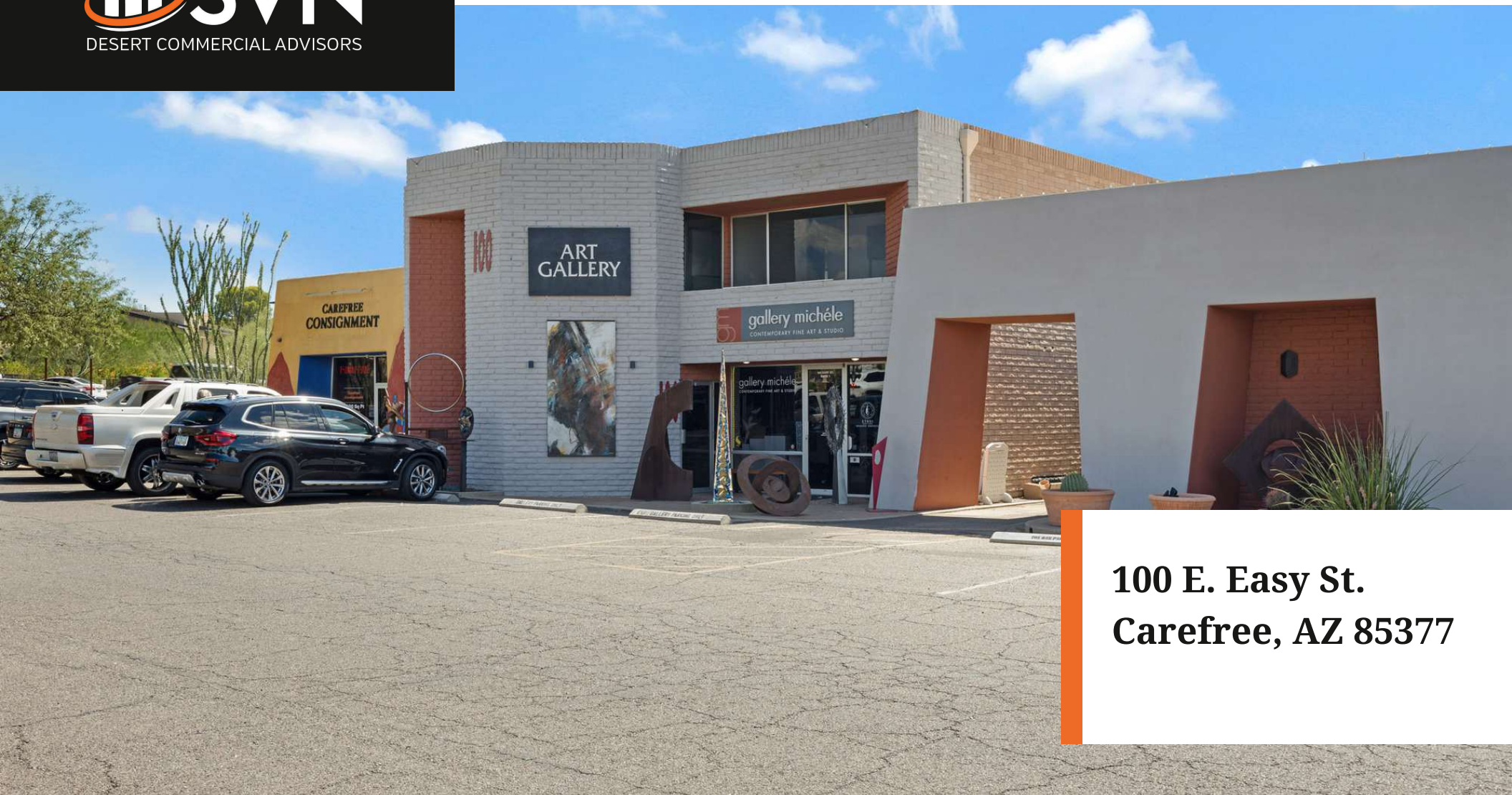




Office Space for Lease



**100 E. Easy St.
Carefree, AZ 85377**

PROPERTY SUMMARY

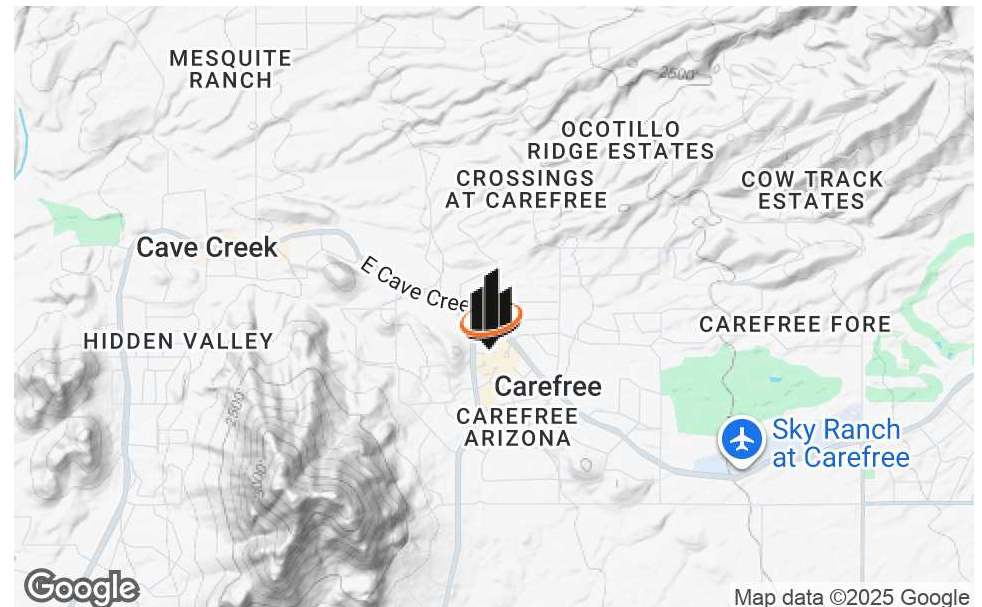
OFFERING SUMMARY

UNIT SIZE	1,233 SF
LEASE RATE	\$24.00 PSF Full Service
MONTHLY RATE	1,233 SF
LEASE TERM	Negotiable
AVAILABILITY	Immediately

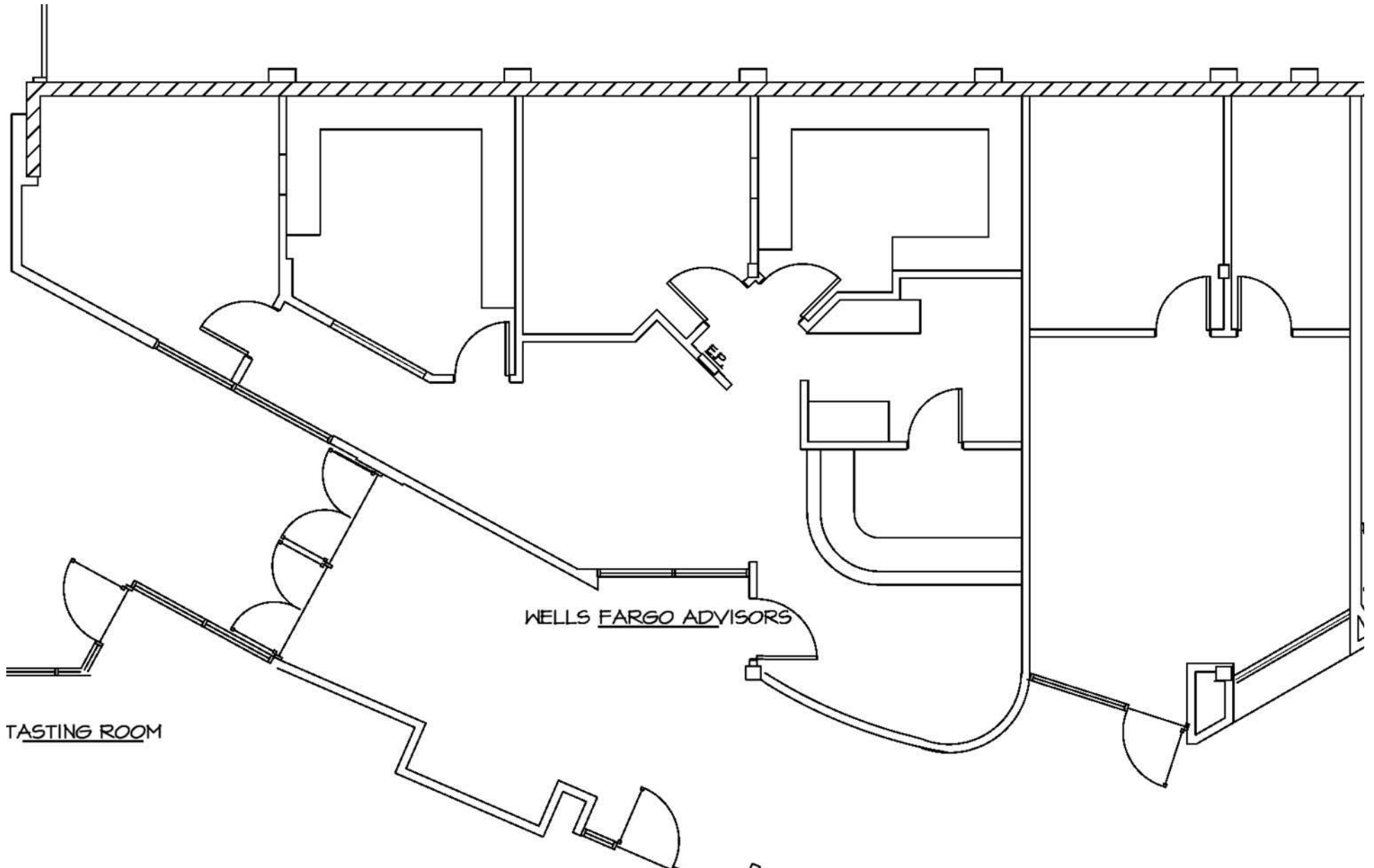


PROPERTY HIGHLIGHTS

- Move-in ready office suite located in the heart of Carefree
- Functional layout for any general office business
- Convenient access to P.O. boxes with U.S Post Office co-occupying the building
- Shops, restaurants, and other amenities in immediate walking distance
- Short drive time to North Scottsdale



FLOOR PLAN



PROPERTY AERIAL



RETAILER MAP



DEMOGRAPHICS MAP & REPORT

POPULATION	1 MILE	3 MILES	5 MILES
TOTAL POPULATION	1,778	13,272	34,264
AVERAGE AGE	61	60	56
AVERAGE AGE (MALE)	61	61	56
AVERAGE AGE (FEMALE)	62	60	56
HOUSEHOLDS & INCOME	1 MILE	3 MILES	5 MILES
TOTAL HOUSEHOLDS	895	6,384	15,196
# OF PERSONS PER HH	2	2.1	2.3
AVERAGE HH INCOME	\$176,202	\$190,184	\$198,674
AVERAGE HOUSE VALUE	\$1,180,853	\$1,148,717	\$1,081,330

Demographics data derived from AlphaMap

