



**TRINITY
PARTNERS**

TRINITY-PARTNERS.COM
1501 MAIN STREET SUITE 410
COLUMBIA, SC 29201

FOR **LEASE** \$15.00 SF/YR
(FULL SERVICE)

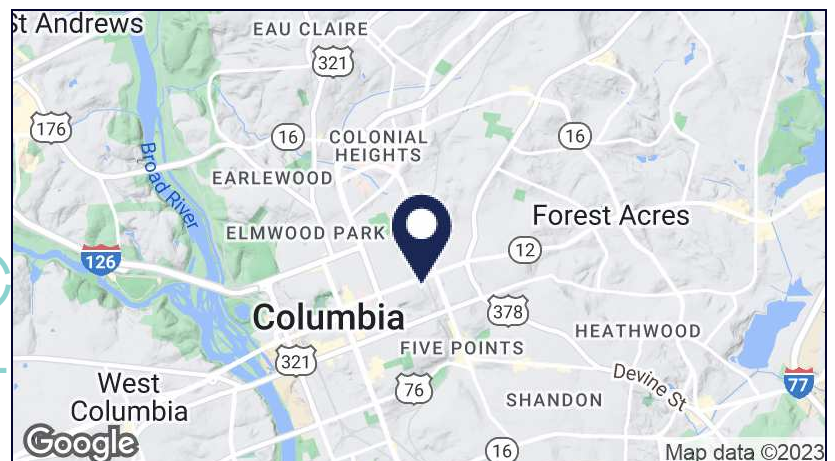
**1900 HAMPTON
STREET**
COLUMBIA, SC 29201

Office Property for Lease

- ±1,200 SF office available
- Fully renovated space with multiple offices
- Features private parking lot on side of the building along with ample street parking on Hampton and Gregg Streets
- Building features additional storage area in basement not included in rentable square footage
- Located on the edge of Columbia's Central Business District with easy interstate access
- Signage available



Located in
Columbia's Central
Business District
on the corner of
Hampton St. and
Gregg St.



CONTACT

JOHN COLEMAN
803.567.1876
JCOLEMAN@TRINITY-PARTNERS.COM

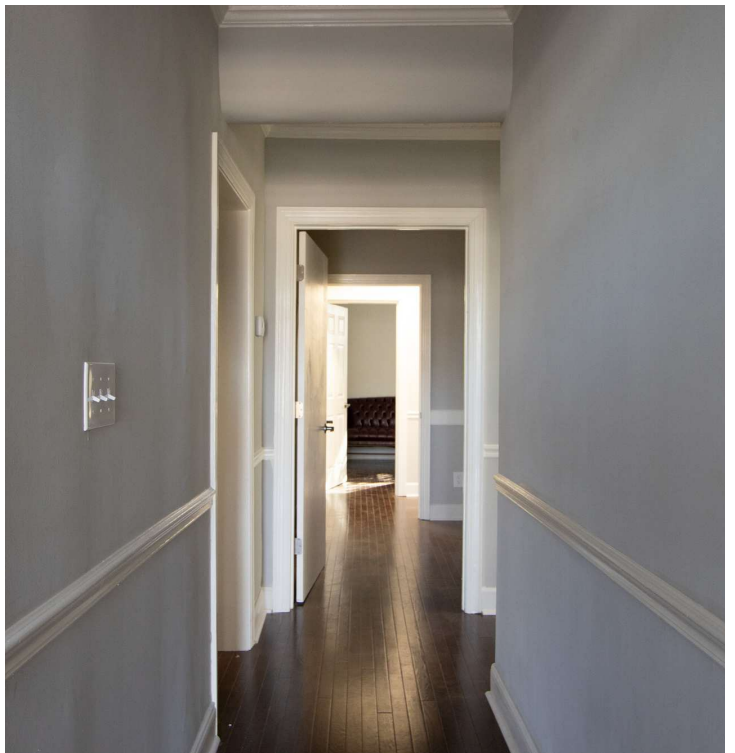
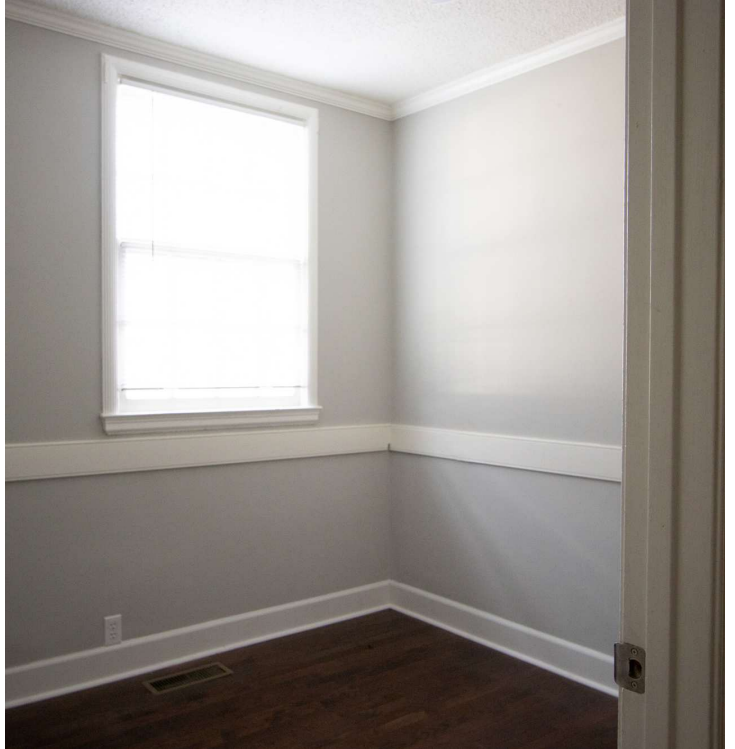
The information contained herein was obtained from sources believed reliable; however, Trinity Partners makes no guarantees, warranties, or representations as to the completeness or accuracy thereof. The presentation of this property is submitted subject to errors, omissions, changes of price or conditions prior to sale or lease, or withdrawal without notice.



**TRINITY
PARTNERS**

TRINITY-PARTNERS.COM
1501 MAIN STREET SUITE 410
COLUMBIA, SC 29201

ADDITIONAL PHOTOS

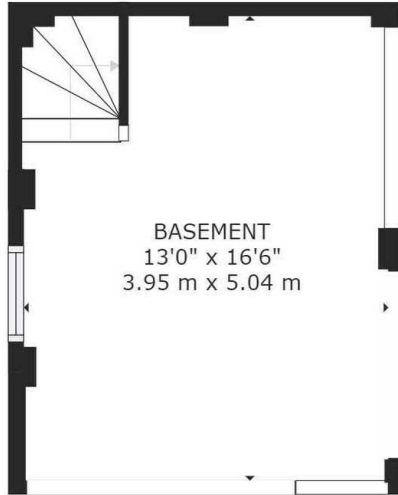


CONTACT

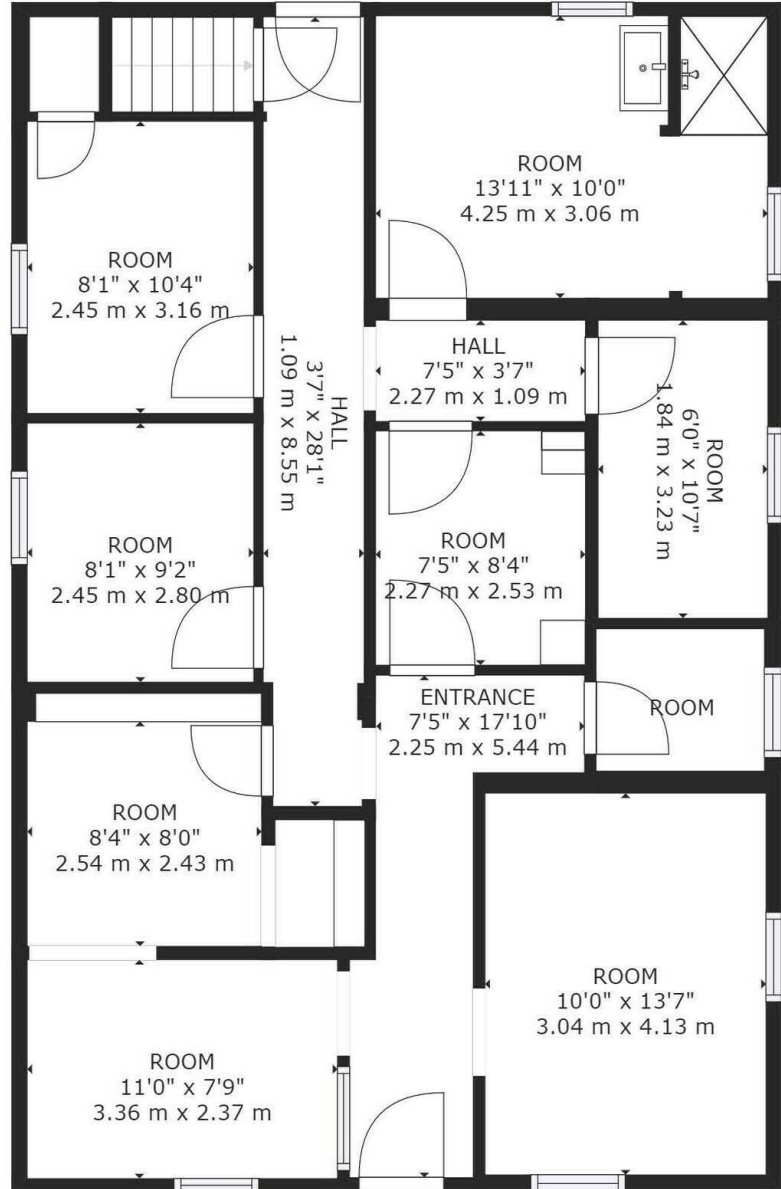
JOHN COLEMAN
803.567.1876
JCOLEMAN@TRINITY-PARTNERS.COM



FLOOR PLAN



FLOOR 1



FLOOR 2

GROSS INTERNAL AREA
FLOOR 1: 213 sq. ft, 20 m², FLOOR 2: 1085 sq. ft, 101 m²
TOTAL: 1298 sq. ft, 121 m²
SIZES AND DIMENSIONS ARE APPROXIMATE, ACTUAL MAY VARY.

CONTACT

JOHN COLEMAN
803.567.1876
JCOLEMAN@TRINITY-PARTNERS.COM



MAP



CONTACT

JOHN COLEMAN
803.567.1876
JCOLEMAN@TRINITY-PARTNERS.COM