



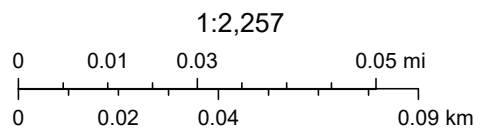


Weber County GIS



10/11/2022, 2:23:38 PM

-  City Boundaries
-  Parcel Address
-  Street Labels
-  Parcel Master



Esri, HERE, Garmin, (c) OpenStreetMap contributors, Source: Esri, Maxar, Earthstar Geographics, and the GIS User Community

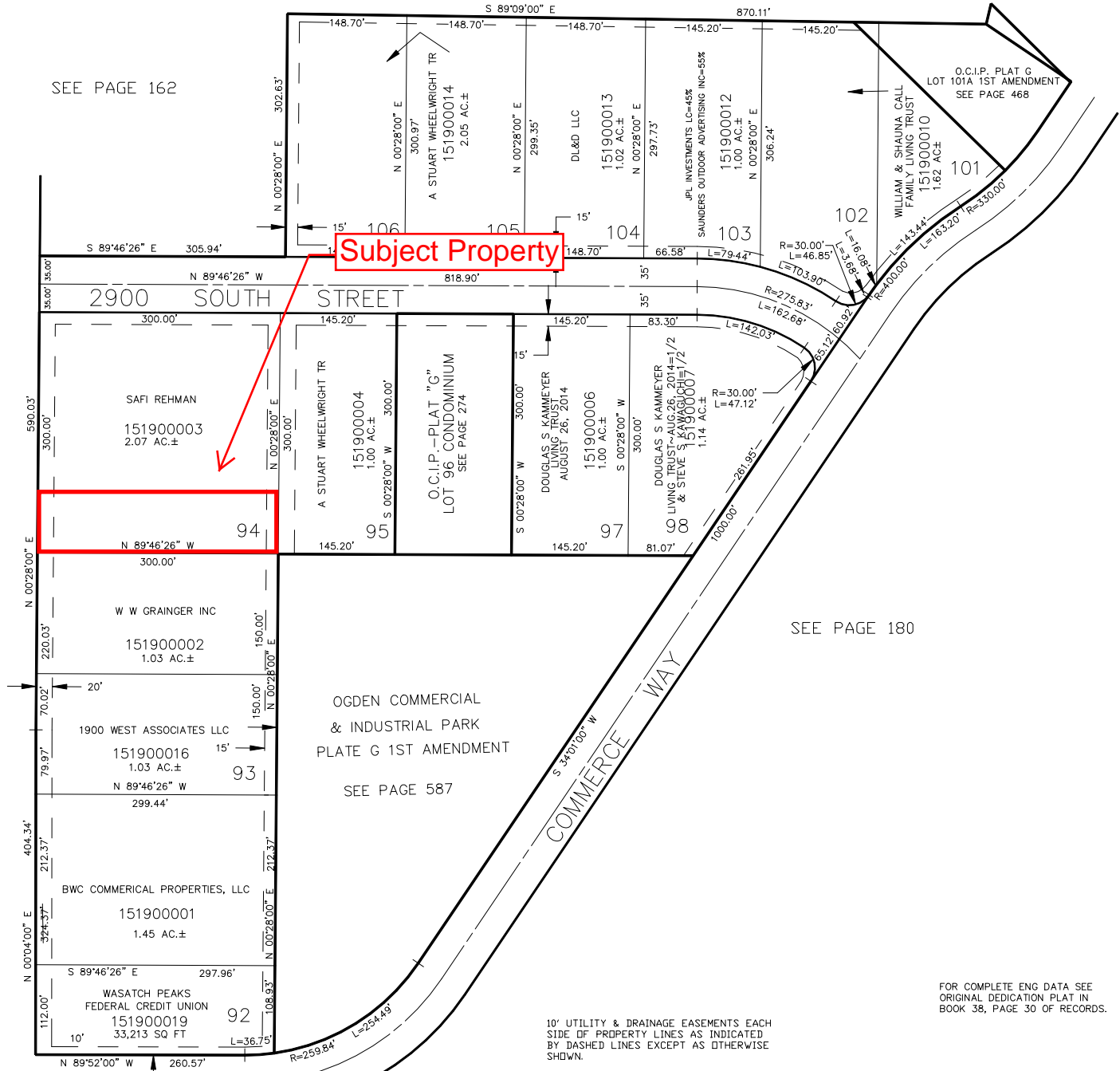
PART OF THE NW 1/4 & SW 1/4, OF SEC. 36, T.6N., R.2W., S.L.B. & M. OGDEN COMMERCIAL & INDUSTRIAL PARK – PLAT "G"

TAXING UNIT: 25

IN OGDEN CITY
SCALE 1" = 100'

SEE PAGE 162

SEE PAGE 162



SEE PAGE 180

Subject Property

FOR COMPLETE ENG DATA SEE ORIGINAL DEDICATION PLAT IN BOOK 38, PAGE 30 OF RECORDS.

10' UTILITY & DRAINAGE EASEMENTS EACH SIDE OF PROPERTY LINES AS INDICATED BY DASHED LINES EXCEPT AS OTHERWISE SHOWN.

SEE PAGE 180

SEE PAGE 94