



700 E. Mineral King | Visalia, CA

Property For Lease

100 W. Willow St. - STE 301  
Visalia CA 93291  
559.804.9371

**GRAHAM** | **& ASSOCIATES**

Matt Graham  
Lic# 01804235  
[www.mgdre.com](http://www.mgdre.com)

to learn more, visit: [www.mgdre.com](http://www.mgdre.com)

## PROPERTY DETAILS

**Address:** 700 E. Mineral King | Visalia, CA

**Square Feet Available:** 6,000 +/- Sq. Ft.

**Lease Type** Gross

**Lease Rate** \$1.35 per Sq. Ft.

### Additional Comments:

BRAND NEW building in Visalia! 6,000 +/- Sq. Ft. build to suit of retail/office/warehouse, available on Mineral King Ave. Please call for further details.



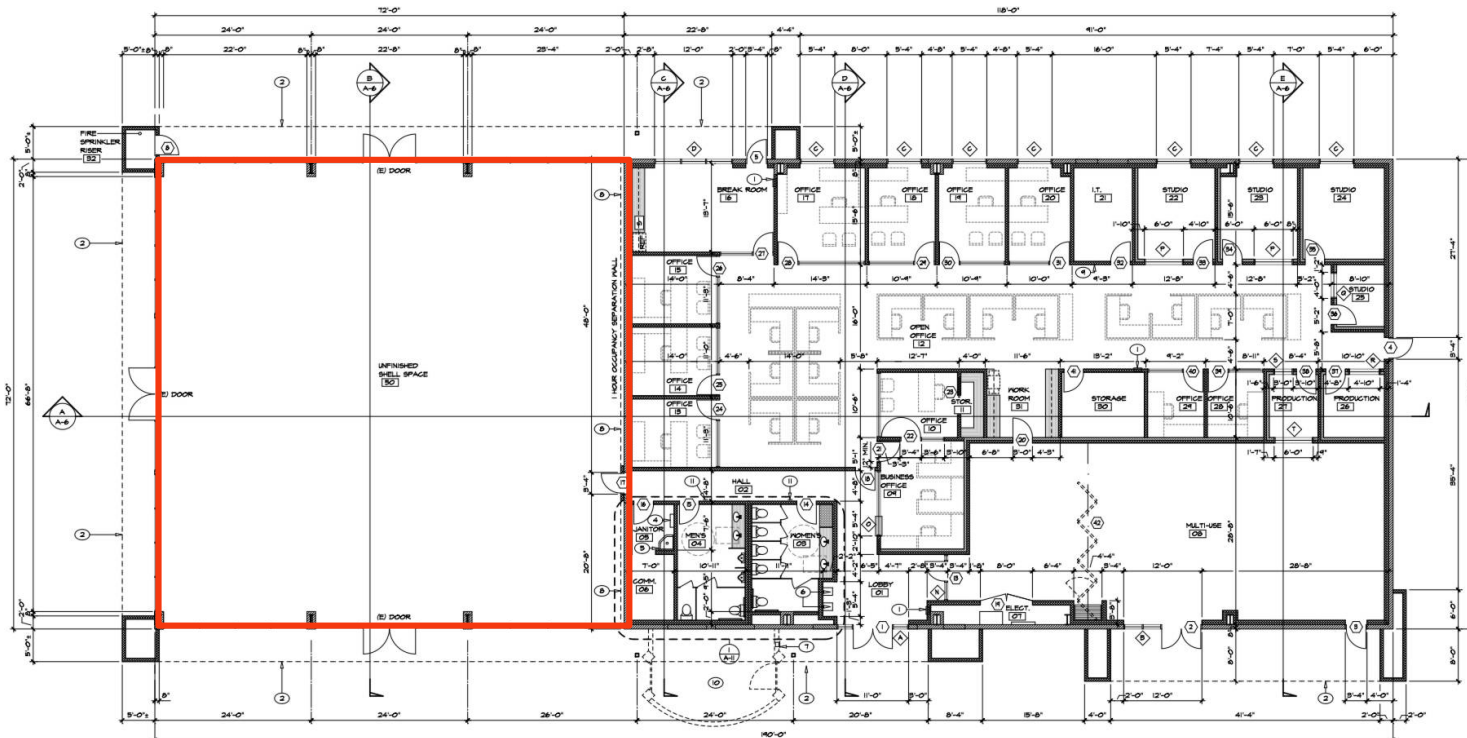
**Contact Broker:**

Matt Graham  
Lic# 01804235

**to learn more, visit: [www.mgdre.com](http://www.mgdre.com)**

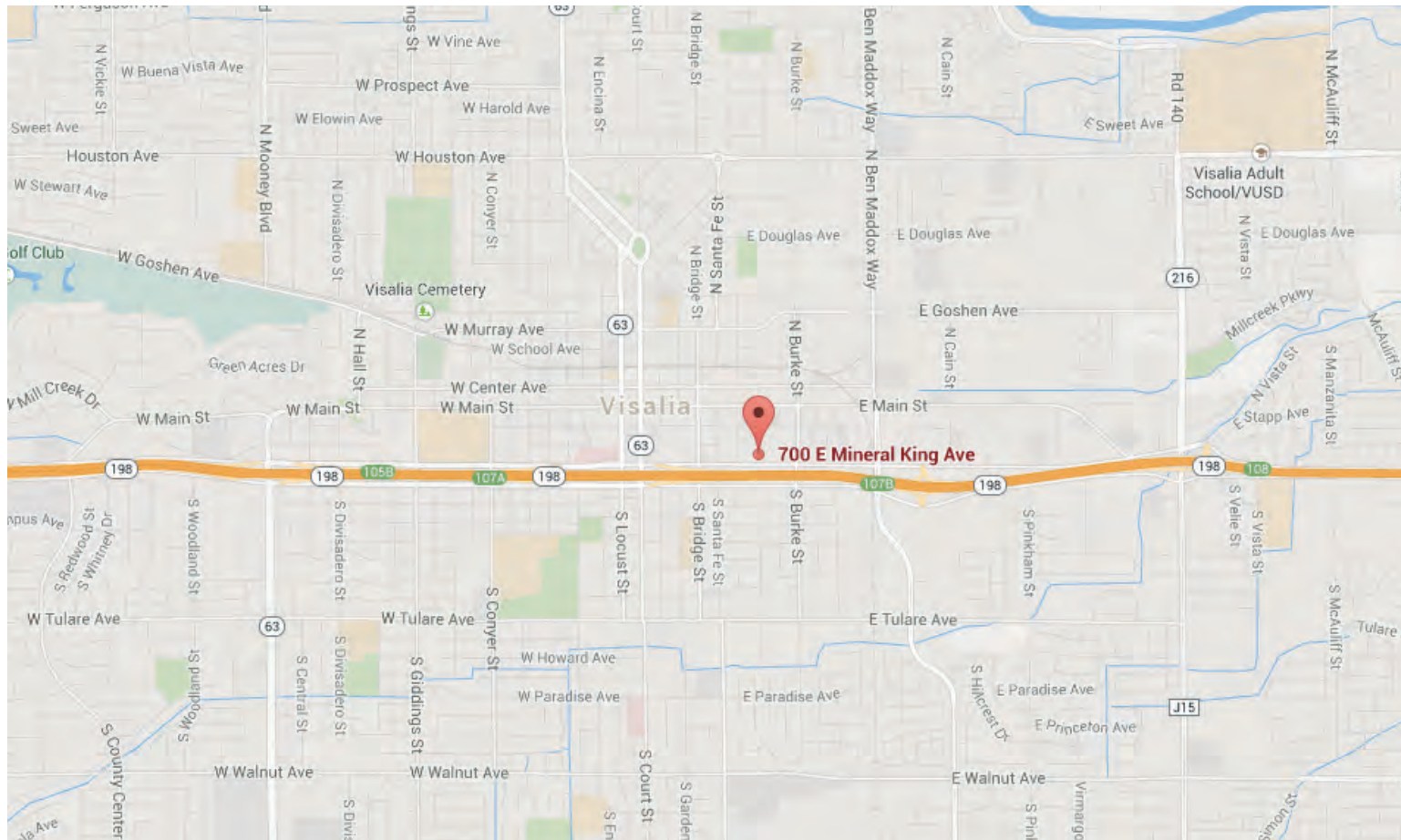
100 W. Willow St. - STE 301  
Visalia CA 93291  
559.804.9371

# FLOOR PLAN



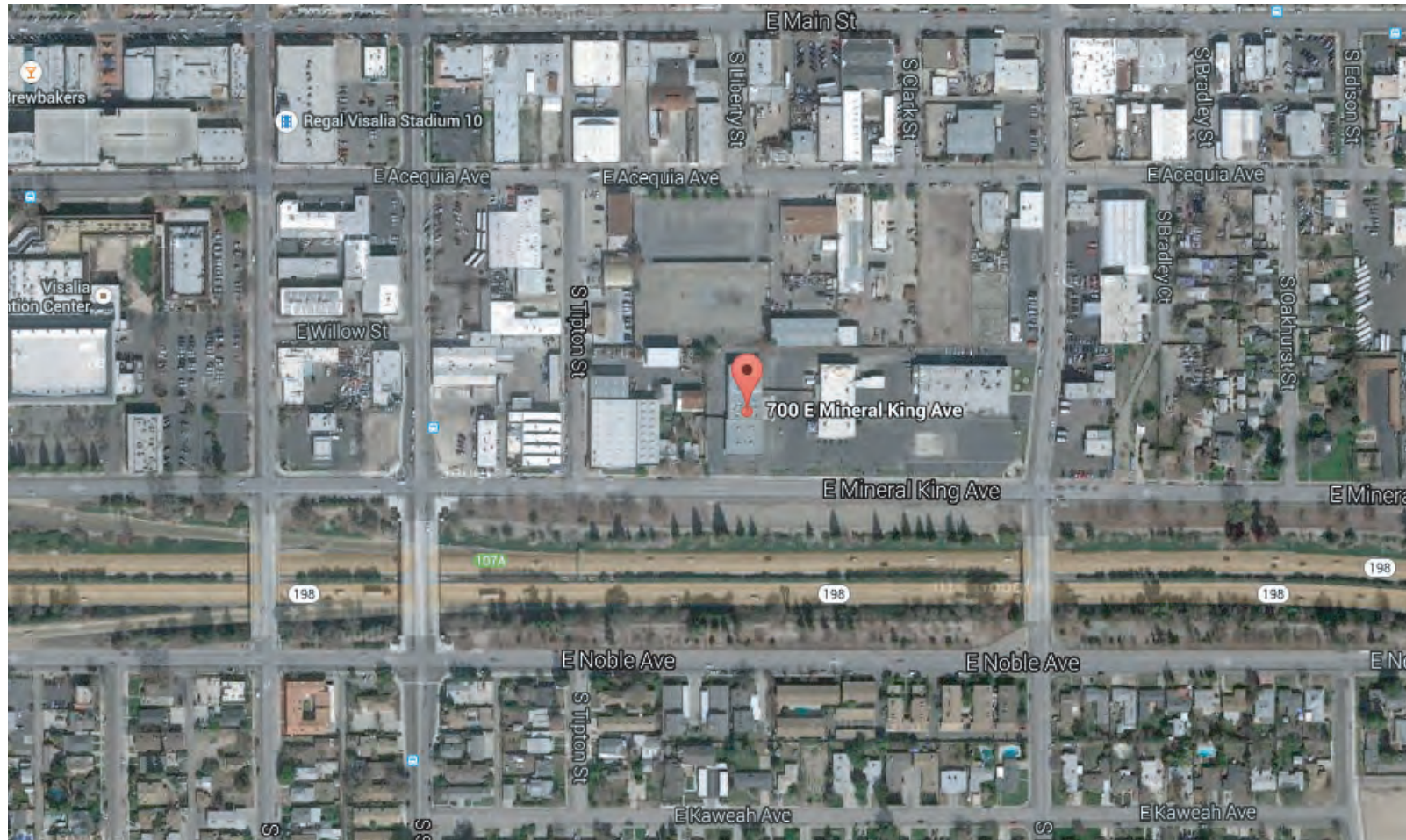
PLEASE NOTE: ALL INFORMATION AND REPRESENTATION MADE HEREIN, WHILE NOT GUARANTEED, HAVE BEEN SECURED FROM SOURCES WE BELIEVE TO BE RELIABLE, HOWEVER, THEY ARE NOT WARRANTED BY MATT GRAHAM & ASSOCIATES AND ARE SUBJECT TO CHANGE WITHOUT NOTICE.

## LOCATION MAP



PLEASE NOTE: ALL INFORMATION AND REPRESENTATION MADE HEREIN, WHILE NOT GUARANTEED, HAVE BEEN SECURED FROM SOURCES WE BELIEVE TO BE RELIABLE, HOWEVER, THEY ARE NOT WARRANTED BY MATT GRAHAM & ASSOCIATES AND ARE SUBJECT TO CHANGE WITHOUT NOTICE.

## PROPERTY LAYOUT



PLEASE NOTE: ALL INFORMATION AND REPRESENTATION MADE HEREIN, WHILE NOT GUARANTEED, HAVE BEEN SECURED FROM SOURCES WE BELIEVE TO BE RELIABLE, HOWEVER, THEY ARE NOT WARRANTED BY MATT GRAHAM & ASSOCIATES AND ARE SUBJECT TO CHANGE WITHOUT NOTICE.

## PROPERTY PHOTOS

