



Whitaker Business Park



110 Whitaker Road
Lutz, Florida 33549

Office > Administrative > For Lease

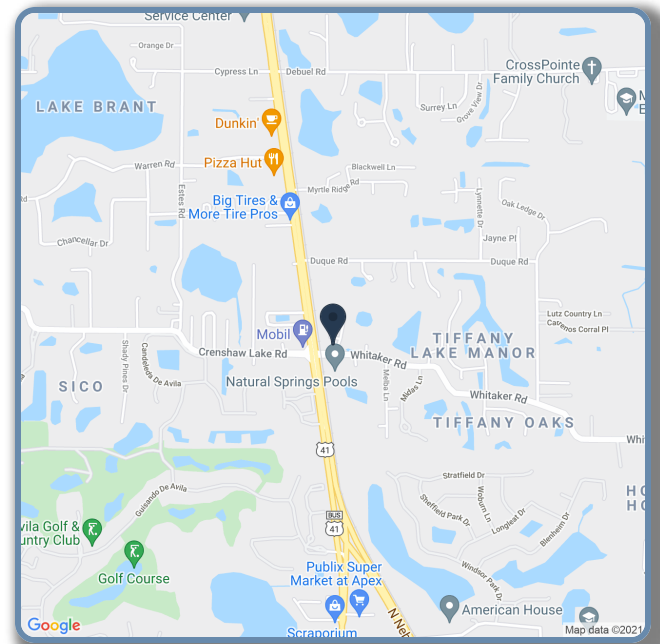
Lease Rate: \$16.00 /sqft MG

1,200 to 1,200 SqFt Available

Excellent Office opportunity for company needing to have a combination of offices and open space or just a small administrative office that's convenient to I-275 or I-75. Tenant Improvement Allowance available.

Property Highlights

- Carpet, Paint and Improvement Allowance
- 7,950 Sq.Ft. Building on 1.59 Acres
- Zoned PD-MU, Flood Zone X-outside the 500 yr.
- Minutes to I-275, convenient to all routes
- 4/1000 parking ratio
- Built in 1988



Service
to a
Higher
Power®

Michelle Bible
VIP Executive Realty
(813) 475-6019
(727) 365-5402
mbible@tampabay.rr.com



<http://vipexecutiverealty.com/>

All information contained herein has been obtained by the owners and/or other sources deemed reliable, but we make no representations or warranties, expressed or implied, as to its accuracy. Information is submitted subject to the possibility of errors, omissions, change of price, rate, conditions or withdrawal without notice. References to measurements are approximate. All parties to a real estate transaction should seek legal and tax advice prior to commitment. Buyer/Tenant must verify the information and bears all risk for any inaccuracies.

Whitaker Business Park

110 Whitaker Road, Lutz, Florida 33549



Suite 110



Suite 110



Suite 110

Market: Tampa/St. Petersburg
Available: 1,200 SqFt
Space Type: Administrative
Year Built: 1988

Parcel ID: U-24-27-18-ZZZ-000000-63950.0
Land Area: 1.59 Acres
Zoning: PD-MU
County: Hillsborough County

Service
to a
Higher
Power®

Michelle Bible
VIP Executive Realty
(813) 475-6019
(727) 365-5402
mbible@tampabay.rr.com

VIP EXECUTIVE
REALTY

<http://vipexecutiverealty.com/>

All information contained herein has been obtained by the owners and/or other sources deemed reliable, but we make no representations or warranties, expressed or implied, as to its accuracy. Information is submitted subject to the possibility of errors, omissions, change of price, rate, conditions or withdrawal without notice. References to measurements are approximate. All parties to a real estate transaction should seek legal and tax advice prior to commitment. Buyer/Tenant must verify the information and bears all risk for any inaccuracies.

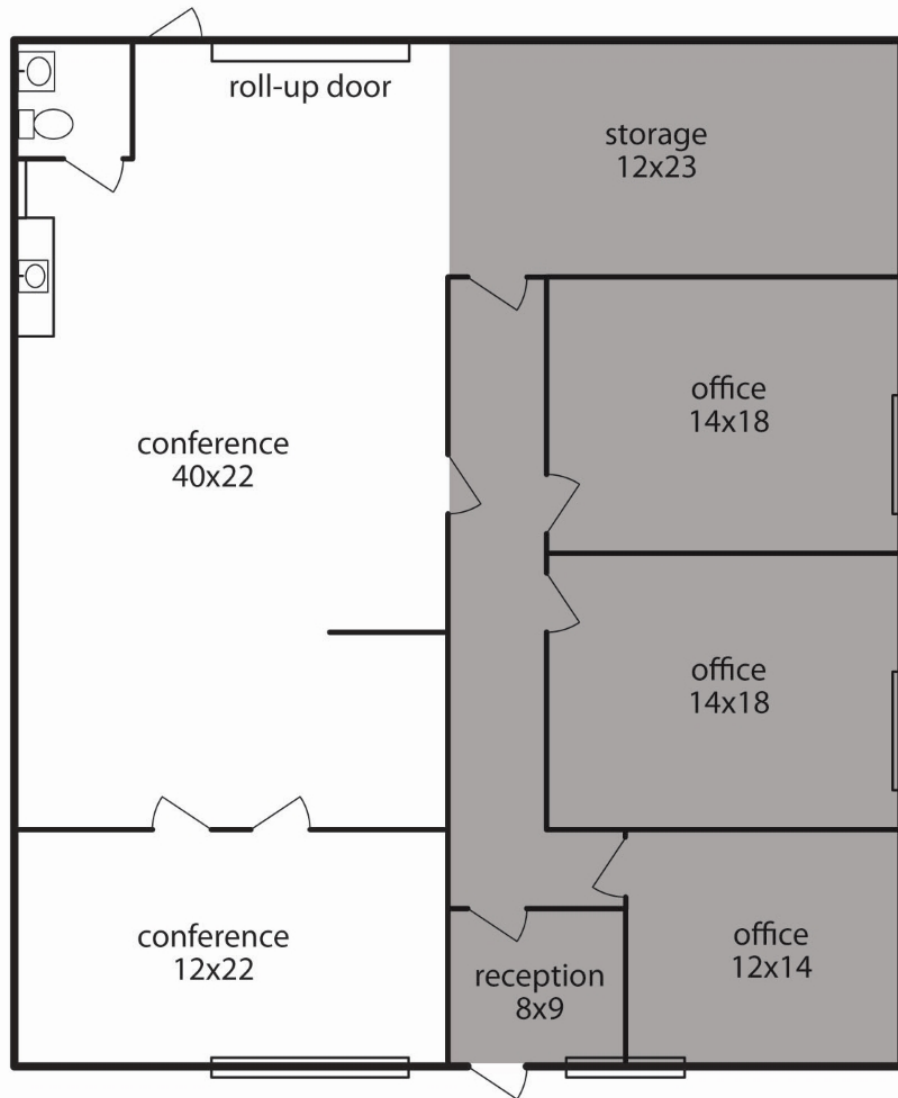
Whitaker Business Park

110 Whitaker Road, Lutz, Florida 33549



Suite	Floor	Type	Avail	Lease Rate	Position
108	1	Administrative	1145sqft	\$16/sqft MG	

Efficient office with open area and restroom. Tenant improvement allowance available to configure to suit your needs.



Service
to a
Higher
Power®

Michelle Bible
VIP Executive Realty
(813) 475-6019
(727) 365-5402
mbible@tampabay.rr.com

VIP EXECUTIVE
REALTY

<http://vipexecutiverealty.com/>

All information contained herein has been obtained by the owners and/or other sources deemed reliable, but we make no representations or warranties, expressed or implied, as to its accuracy. Information is submitted subject to the possibility of errors, omissions, change of price, rate, conditions or withdrawal without notice. References to measurements are approximate. All parties to a real estate transaction should seek legal and tax advice prior to commitment. Buyer/Tenant must verify the information and bears all risk for any inaccuracies.