



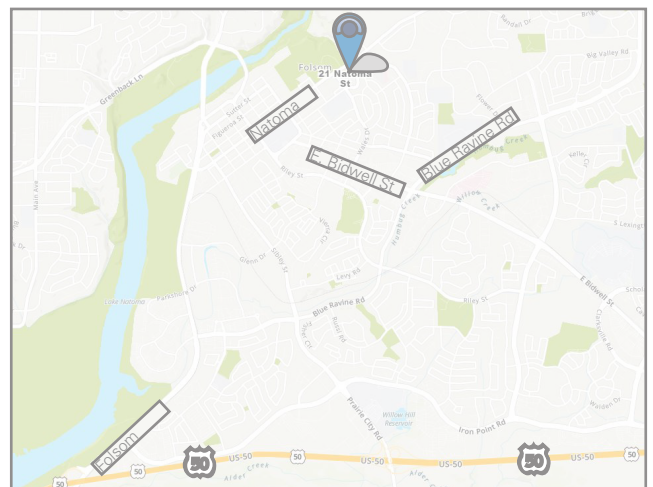
# FOR LEASE

## Natoma Professional Center

11 Natoma Street - Folsom, CA

### FEATURES

- 2,808 RSF Available
- Move-In Ready Suites
- Building and monument signage available
- Above-standard parking (5:1,000 SF)
- Close to restaurants, retail and City Hall
- Quality construction and design
- Excellent street frontage/visibility



**NEWMARK**

**Jason Brintzer**

t 916-569-2341

Jason.Brintzer@nrmk.com

CA RE License #02114854

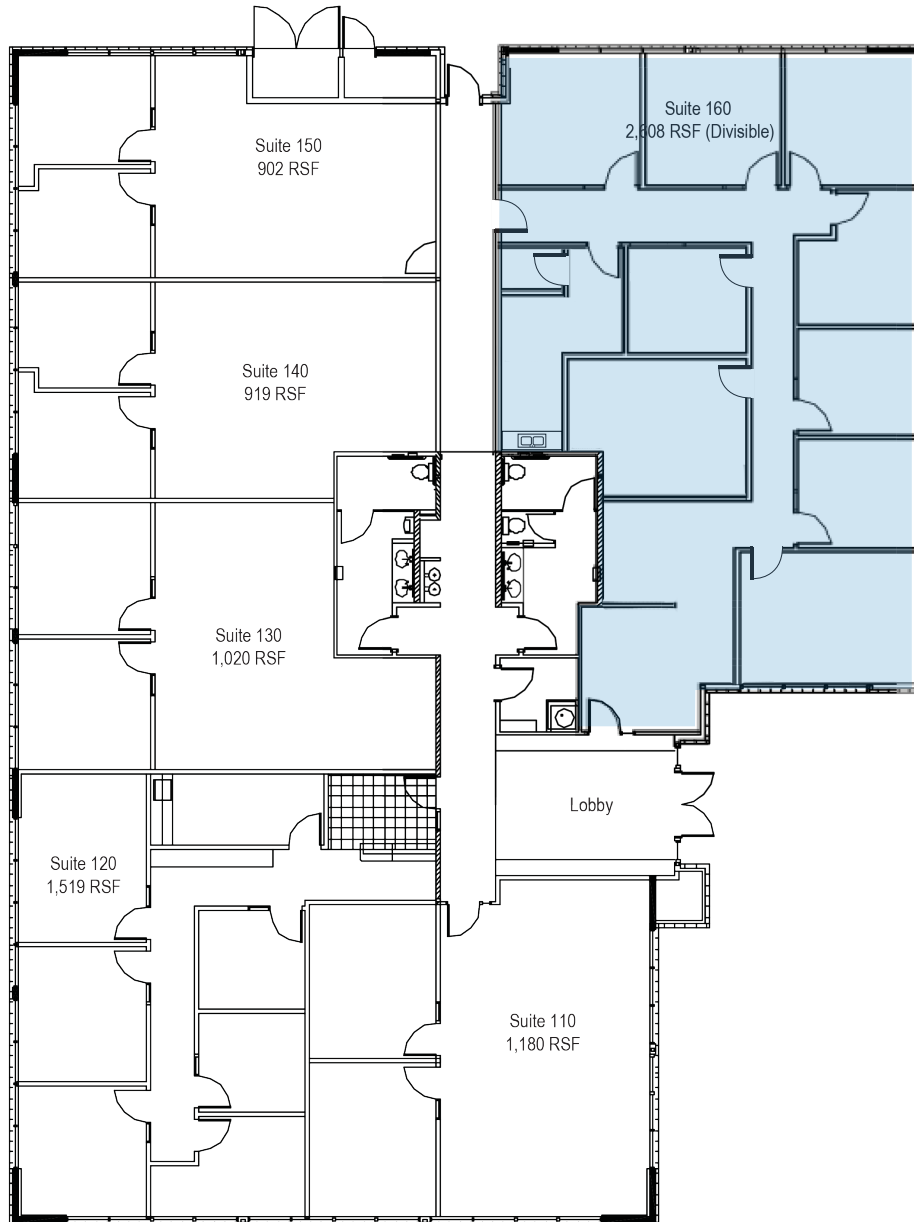
**Craig Brintzer**

t 916-569-2311

Craig.Brintzer@nrmk.com

CA RE License #00928221

# 11 NATOMA STREET



The distributor of this communication is performing acts for which a real estate license is required. The information contained herein has been obtained from sources deemed reliable but has not been verified and no guarantee, warranty or representation, either express or implied, is made with respect to such information. Terms of sale or lease and availability are subject to change or withdrawal without notice. 21-0864 • 4/23

**NEWMARK**

**Jason Brintzer**

t 916-569-2341

Jason.Brintzer@nmrk.com

CA RE License #02114854

**Craig Brintzer**

t 916-569-2311

Craig.Brintzer@nmrk.com

CA RE License #00928221