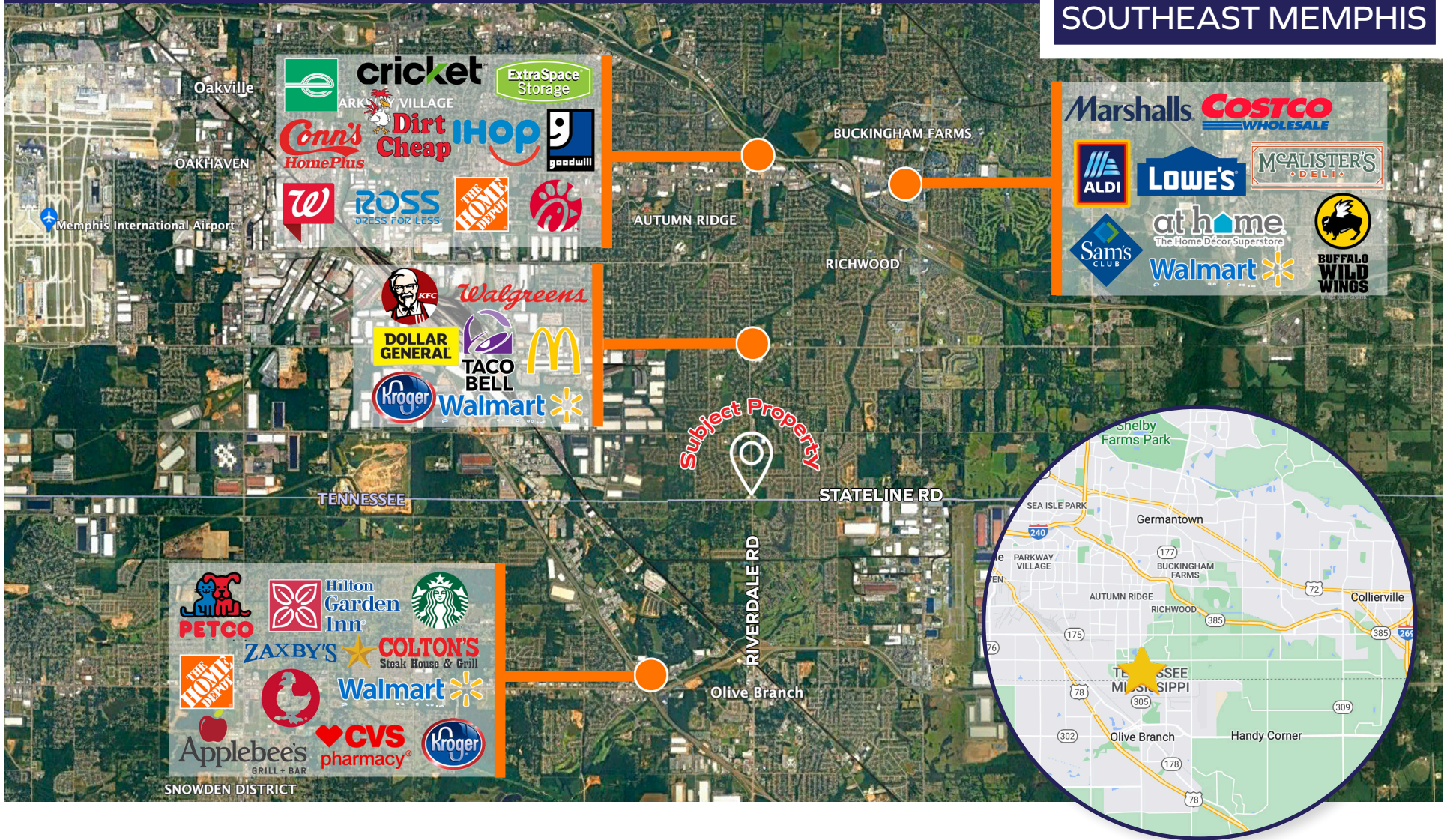


FOR SALE NEC STATELINE & RIVERDALE | MEMPHIS, TN 38104

**MULTI-FAMILY SITE
SOUTHEAST MEMPHIS**



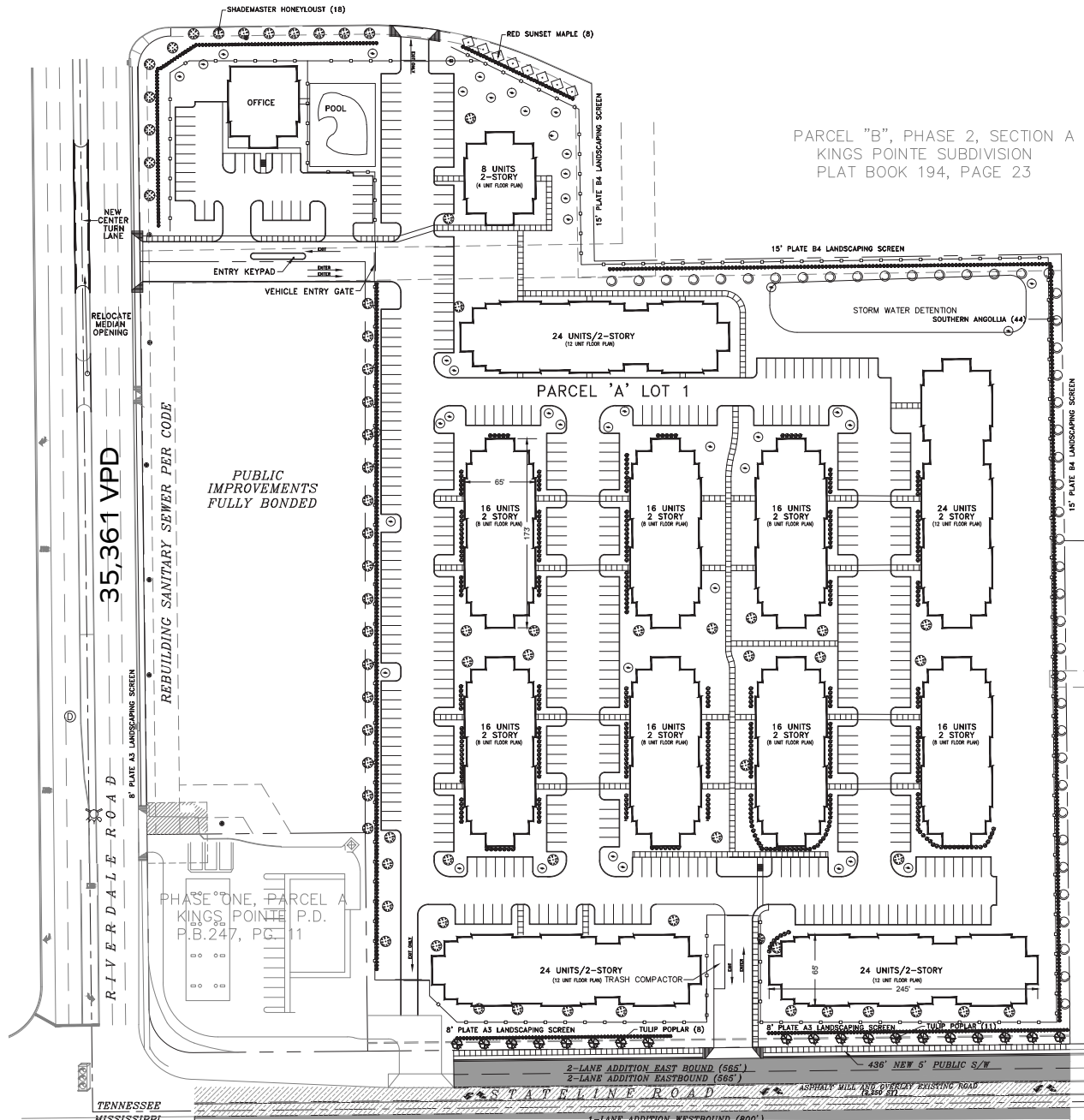
CONTACT US

FRANK DYER III, CCIM, RPA
 Vice President of Brokerage
 (D) 901.842.5585
 (C) 901.277.8183
 frank@gillprop.com

BARRY MAYNARD
 Vice President of Brokerage
 (D) 901.842.5587
 (C) 901.230.4265
 barry@gillprop.com



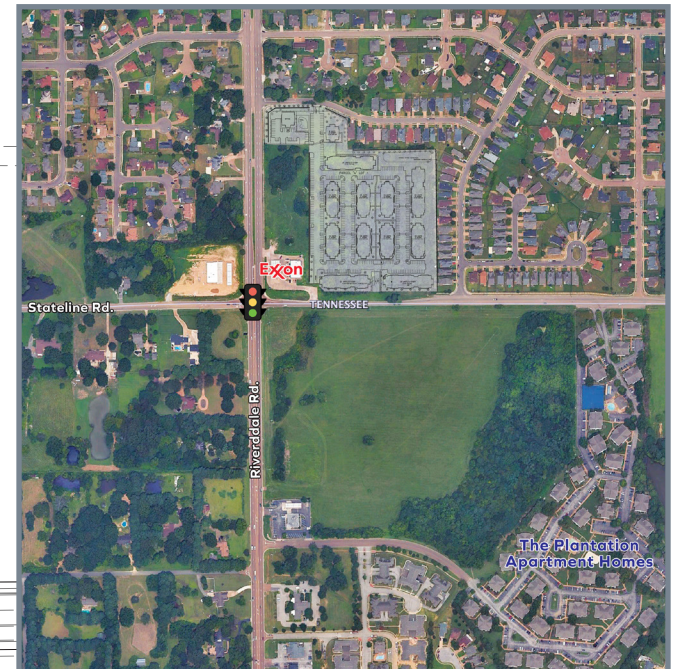
PROPOSED SITE PLAN



PARCEL "B", PHASE 2, SECTION A
KINGS POINTE SUBDIVISION
PLAT BOOK 194, PAGE 23

PROPERTY HIGHLIGHTS

- » 14.97 acre pad site ready to be developed
- » **SALE PRICE:** Negotiable
- » Able to accommodate up to 212 units
- » Located on the edge of Olive Branch
- » Minutes away from shopping and FedEx Ground
- » Zoned for multi-family
- » Already permitted and entitled



2022 DEMOGRAPHICS

3-Mile Radius



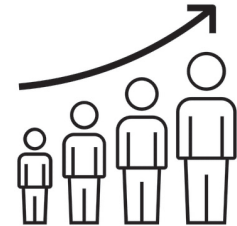
58,342
POPULATION



20,382
HOUSEHOLDS



\$77,023
AVG HH INCOME



0.4%
POP. GROWTH



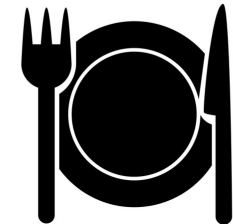
16,519
LABOR FORCE



1,538
BUSINESSES



SURROUNDED BY
RETAIL



ABUNDANT
DINING OPTIONS

FRANK DYER III, CCIM, RPA

Vice President of Brokerage
(D) 901.842.5585
(C) 901.277.8183
frank@gillprop.com

BARRY MAYNARD

Vice President of Brokerage
(D) 901.842.5587
(C) 901.230.4265
barry@gillprop.com