



SOUTHTREE

COMMERCIAL REAL ESTATE

FOR SALE OR FOR LEASE

2002 COMMERCE DRIVE,
PEACHTREE CITY, GA 30269



PROPERTY DETAILS

11,100 SF 2 Story Office

3.7 parking spaces per 1,000 SF

Walkable to Hotels, Restaurants, Banks and Lifestyle Fitness

Golf Cart Accessible

Located in Westpark Business Park with Convenient access to Hwy 74 + Hwy 54

\$26.00 / SF

AVAILABILITY

~5,700 SF Available



EMILY WINKLE

678.793.5464

ewinkle@stcom.us

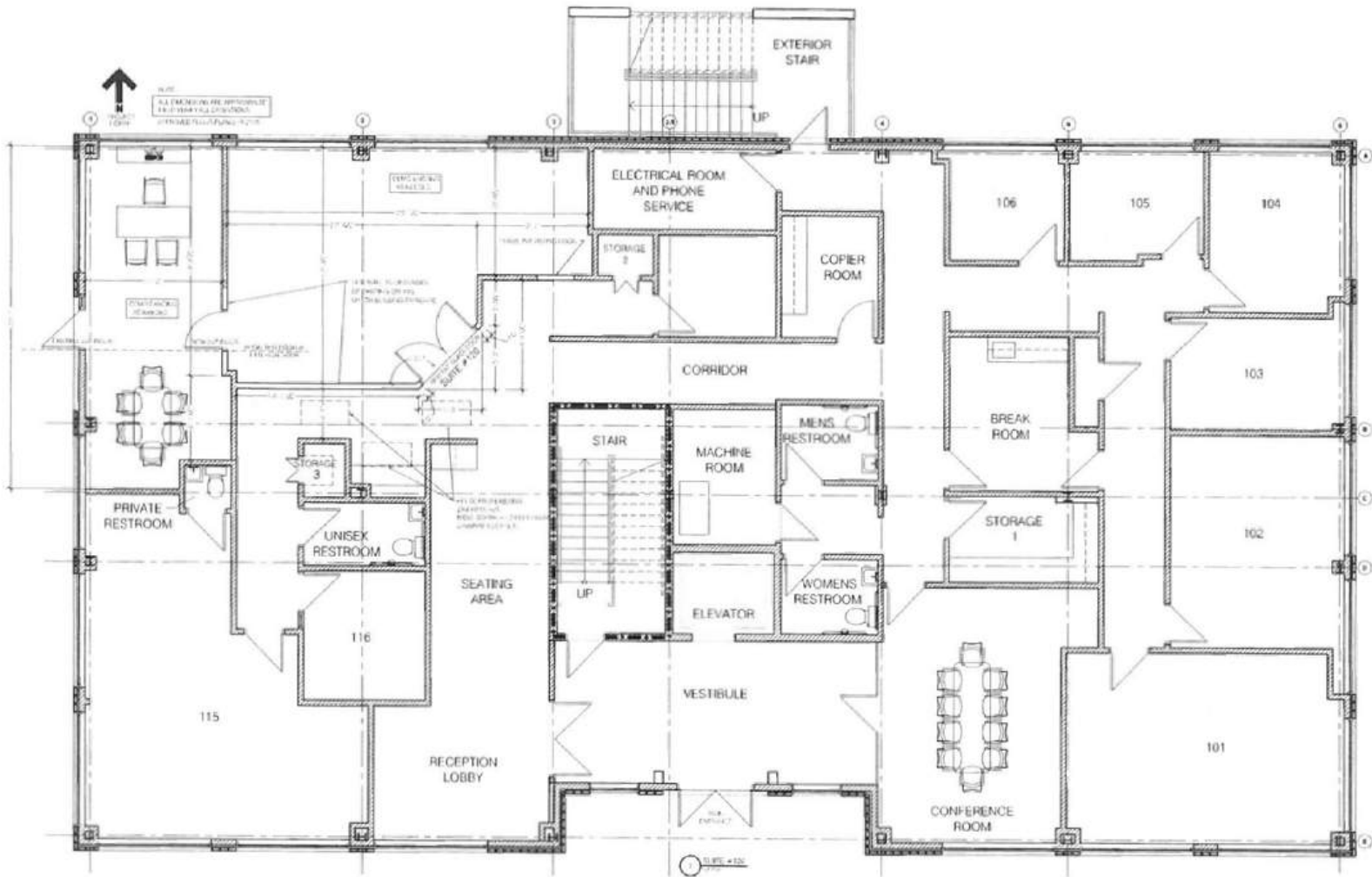


STCOM.US



201 PROSPECT PARK, SUITE A,
PEACHTREE CITY, GA 30269

FLOOR PLAN



EMILY WINKLE

678.793.5464

ewinkle@stcom.us



STCOM.US



**201 PROSPECT PARK, SUITE A,
PEACHTREE CITY, GA 30269**



SOUTHTREE

COMMERCIAL REAL ESTATE

AREA MAP

2002 COMMERCE DRIVE,
PEACHTREE CITY, GA 30269



SUBJECT



THE AVENUE
Peachtree City



EMILY WINKLE

678.793.5464

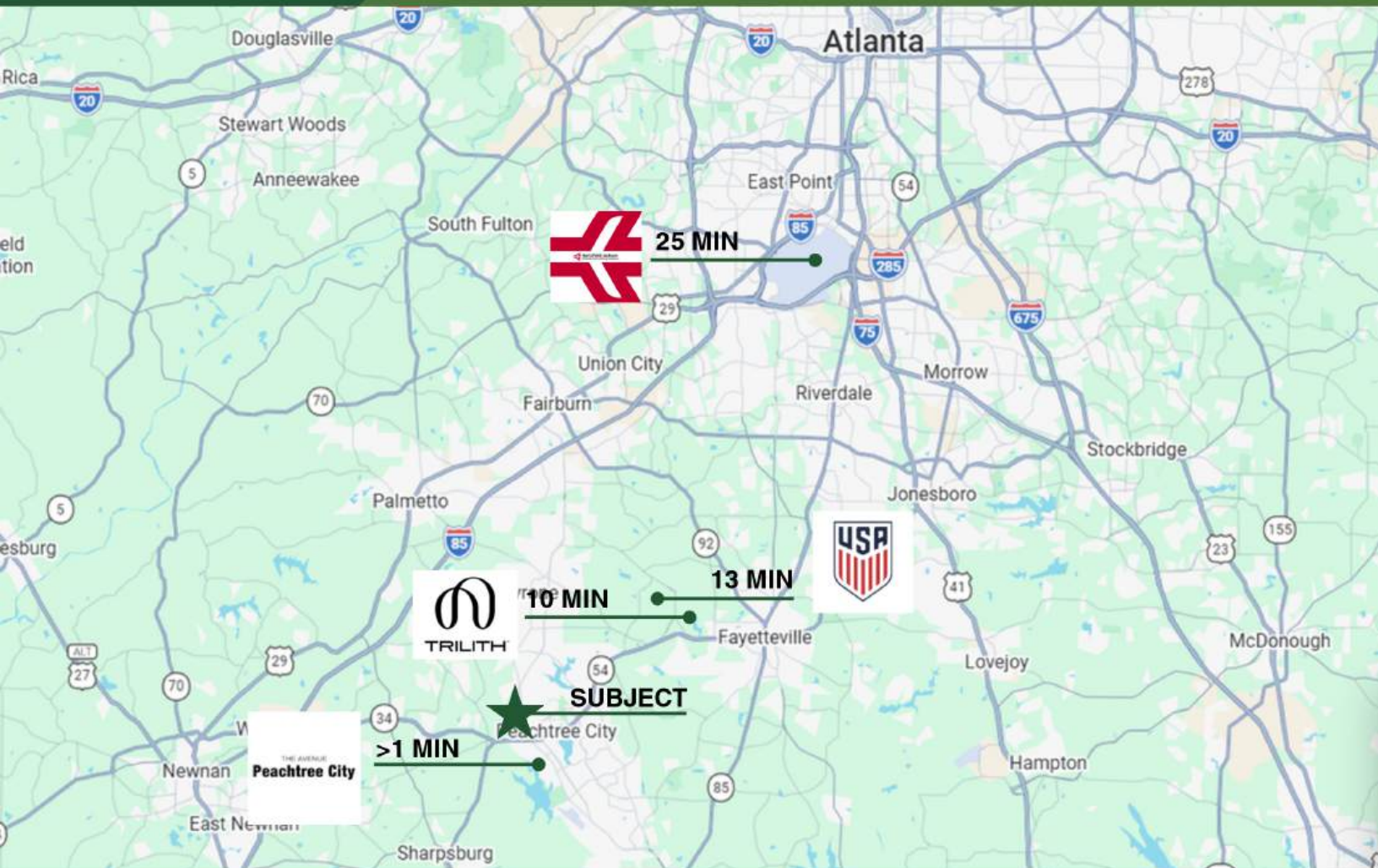
ewinkle@stcom.us



STCOM.US



**201 PROSPECT PARK, SUITE A,
PEACHTREE CITY, GA 30269**



| POPULATION | 5 MILE RADIUS |
|------------------------|---------------|
| 2021 | 60,817 |
| 2026 PROJECTION | 63,567 |
| POP GROWTH 2021 - 2026 | 1.0% |
| AVG AGE | 42.6 |

| HOUSEHOLDS (HH) | 5 MILE RADIUS |
|--------------------|---------------|
| 2021 TOTAL HH | 21,912 |
| 2021 AVG HH INCOME | \$130,656 |
| MEDIAN HOME VALUE | \$317,470 |



EMILY WINKLE

678.793.5464

ewinkle@stcom.us



STCOM.US



201 PROSPECT PARK, SUITE A,
PEACHTREE CITY, GA 30269



SOUTHTREE

COMMERCIAL REAL ESTATE

PEACHTREE CITY, GEORGIA

2002 COMMERCE DRIVE,
PEACHTREE CITY, GA 30269



AWARD WINNING MASTER PLANNED COMMUNITY

Peachtree City offers a vibrant economy and outstanding quality of life where business owners of all kinds “Plan to Stay”.



PROXIMITY TO HARTSFIELD-JACKSON INTERNATIONAL AIRPORT

Peachtree City's convenient proximity to the world's busiest airport, Hartsfield – Jackson International Airport, is a big factor in the city's corporate success. The city also offers the convenient amenity of Atlanta Regional Airport – Falcon Field.



AFFLUENCE & QUALITY OF LIFE

The city is located in the second most affluent county in the state of Georgia, Fayette County, which is consistently ranked as one of the top places to live in the U.S.



GOLF CARTS

Over 90 miles of golf cart paths throughout the city offers connectivity and walkability to anywhere in the entire city.



AWARD WINNING K-12 SCHOOLS

The schools in Peachtree City are consistently ranked top 10 in the state, most recently being #6 in GA for the 2018-19 school year.



EMILY WINKLE

678.793.5464

ewinkle@stcom.us



STCOM.US



201 PROSPECT PARK, SUITE A,
PEACHTREE CITY, GA 30269