

# 1508

**EUREKA ROAD  
ROSEVILLE, CALIFORNIA**

**±11,376 RSF AVAILABLE**

## PROPERTY HIGHLIGHTS

SUITE 185*	1,447 RSF
SUITE 190*	2,673 RSF
SUITE 275**	2,588 RSF
SUITE 290**	4,668 RSF

\*SUITES 185 AND 190\* - CONTIGUOUS FOR A TOTAL OF ±4,120 RSF

\*\*SUITES 275 AND 290 ARE CONTIGUOUS FOR A TOTAL OF ±7,256 RSF

- On-site Fitness Room with showers and lockers
- On-site common conference room
- On-site management
- Private balcony available in select suites
- Walking distance to high-end retail and entertainment venues

## CONTACT INFORMATION

### CHRIS SCHWARZE

EXECUTIVE DIRECTOR

916.288.4803

chris.schwarze@cushwake.com

CA License #01291261

### CHAD COOK, MCR, SIOR, CCIM

SENIOR DIRECTOR

916.329.1562

chad.cook@cushwake.com

CA License #01711687

### KEVIN PARTINGTON

EXECUTIVE DIRECTOR

916.288.4807

kevin.partington@cushwake.com

CA License #01199010

### CUSHMAN & WAKEFIELD INC.

400 Capitol Mall, Suite 1800,

Sacramento, CA 95814

916.288.4800

LIC. #0061633

# 1508

**EUREKA ROAD  
ROSEVILLE, CALIFORNIA**

[1ST FLOOR](#)
[2ND FLOOR](#)

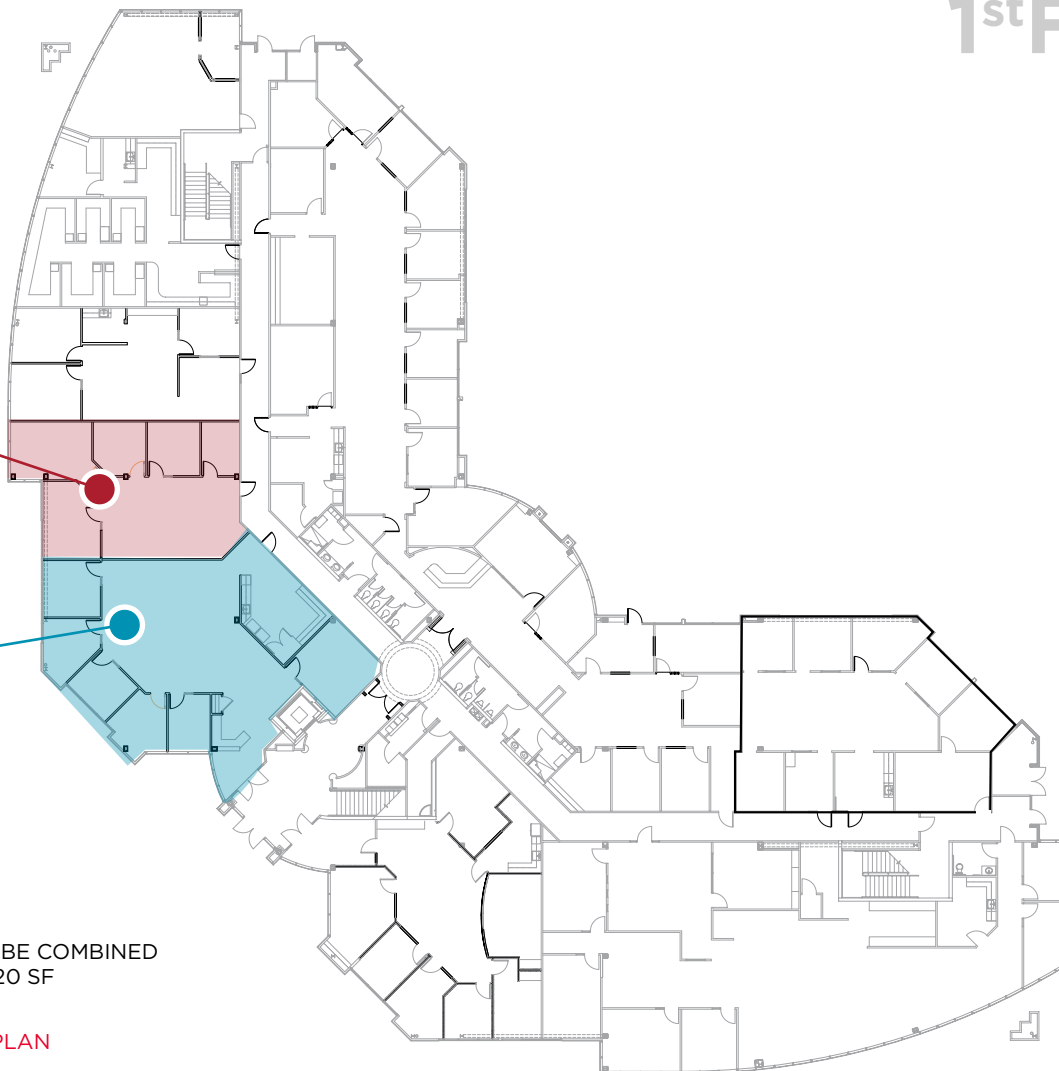
**FLOOR PLANS**  
**1<sup>st</sup> FLOOR**

**SUITE 185**

1,447 SF

**SUITE 190\***

2,673 SF



**\*SUITE 190** - AVAILABLE 8/1/2019 - CONTIGUOUS CAN BE COMBINED WITH **SUITE 185** TO ACCOMMODATE 4,120 SF

[CLICK ON HIGHLIGHTED SPACE TO DOWNLOAD FLOOR PLAN](#)

## CONTACT INFORMATION

**CHRIS SCHWARZE**

EXECUTIVE DIRECTOR

916.288.4803

chris.schwarze@cushwake.com

CA License #01291261

**CHAD COOK, MCR, SIOR, CCIM**

SENIOR DIRECTOR

916.329.1562

chad.cook@cushwake.com

CA License #01711687

**KEVIN PARTINGTON**

EXECUTIVE DIRECTOR

916.288.4807

kevin.partington@cushwake.com

CA License #01199010

**CUSHMAN & WAKEFIELD INC.**

400 Capitol Mall, Suite 1800,

Sacramento, CA 95814

916.288.4800

LIC. #0061633

# 1508

**EUREKA ROAD  
ROSEVILLE, CALIFORNIA**

[1ST FLOOR](#)
[2ND FLOOR](#)

**FLOOR PLANS**  
**2<sup>nd</sup> FLOOR**

**SUITE 275\***

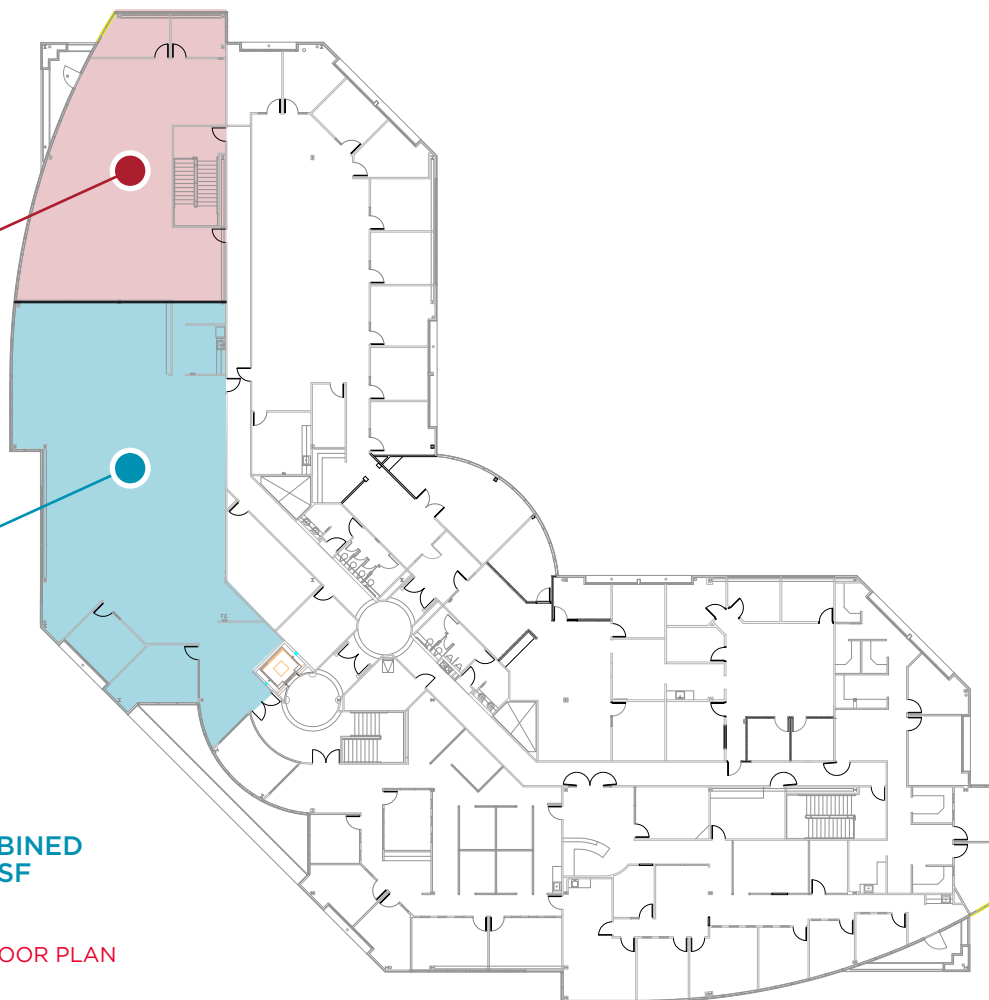
2,588 SF

**SUITE 290\***

4,668 SF

\*SUITE 275 AND SUITE 290 CAN BE COMBINED  
TO FORM A CONTIGUOUS SPACE ±7,256 SF

CLICK ON HIGHLIGHTED SPACE TO DOWNLOAD FLOOR PLAN



## CONTACT INFORMATION

**CHRIS SCHWARZE**

EXECUTIVE DIRECTOR

916.288.4803

chris.schwarze@cushwake.com

CA License #01291261

**CHAD COOK, MCR, SIOR, CCIM**

SENIOR DIRECTOR

916.329.1562

chad.cook@cushwake.com

CA License #01711687

**KEVIN PARTINGTON**

EXECUTIVE DIRECTOR

916.288.4807

kevin.partington@cushwake.com

CA License #01199010

**CUSHMAN & WAKEFIELD INC.**

400 Capitol Mall, Suite 1800,

Sacramento, CA 95814

916.288.4800

LIC. #0061633



# 1508

**EUREKA ROAD  
ROSEVILLE, CALIFORNIA**



## GALLERY

### CONTACT INFORMATION

**CHRIS SCHWARZE**

EXECUTIVE DIRECTOR

916.288.4803

[chris.schwarze@cushwake.com](mailto:chris.schwarze@cushwake.com)

CA License #01291261

**CHAD COOK, MCR, SIOR, CCIM**

SENIOR DIRECTOR

916.329.1562

[chad.cook@cushwake.com](mailto:chad.cook@cushwake.com)

CA License #01711687

**KEVIN PARTINGTON**

EXECUTIVE DIRECTOR

916.288.4807

[kevin.partington@cushwake.com](mailto:kevin.partington@cushwake.com)

CA License #01199010

**CUSHMAN & WAKEFIELD INC.**

400 Capitol Mall, Suite 1800,

Sacramento, CA 95814

916.288.4800

LIC. #0061633



# 1508

**EUREKA ROAD  
ROSEVILLE, CALIFORNIA**

## LOCATION



## CONTACT INFORMATION

**CHRIS SCHWARZE**

EXECUTIVE DIRECTOR

916.288.4803

chris.schwarze@cushwake.com

CA License #01291261

**CHAD COOK, MCR, SIOR, CCIM**

SENIOR DIRECTOR

916.329.1562

chad.cook@cushwake.com

CA License #01711687

**KEVIN PARTINGTON**

EXECUTIVE DIRECTOR

916.288.4807

kevin.partington@cushwake.com

CA License #01199010

**CUSHMAN & WAKEFIELD INC.**

400 Capitol Mall, Suite 1800,

Sacramento, CA 95814

916.288.4800

LIC. #0061633