

25125 REGENCY DRIVE
NOVI, MICHIGAN

OFFICE FOR SUBLEASE
10,000-34,285 Square Feet Available



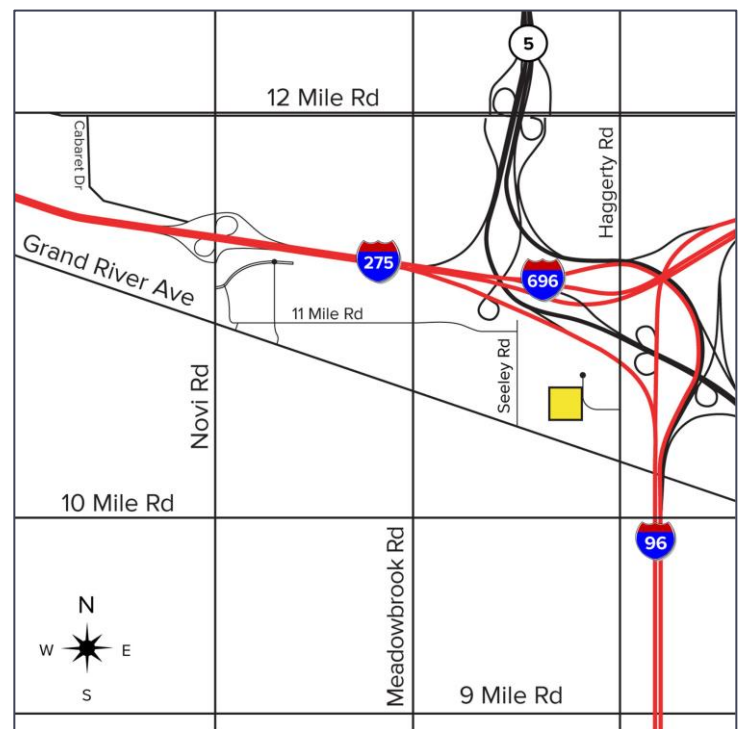
**SIGNATURE
ASSOCIATES**
KNOW SIGNATURE | KNOW RESULTS

REGENCY CENTRE



PROPERTY FEATURES

- 10,000-34,285 square feet building
- Available leasing options:
 - Option A: Southeast corner of building (33 desks)
 - Option B: Entire building except testing, shipping, or benchmark rooms (78 desks)
 - Option C: Negotiable
- 24' clear height
- (1) 12x14 grade level door, (2) truckwells
- Zoned light industrial
- Spec building built in 2016
- Available for sublease or direct lease
- Lease Rate: \$12.50/sq. ft. NNN



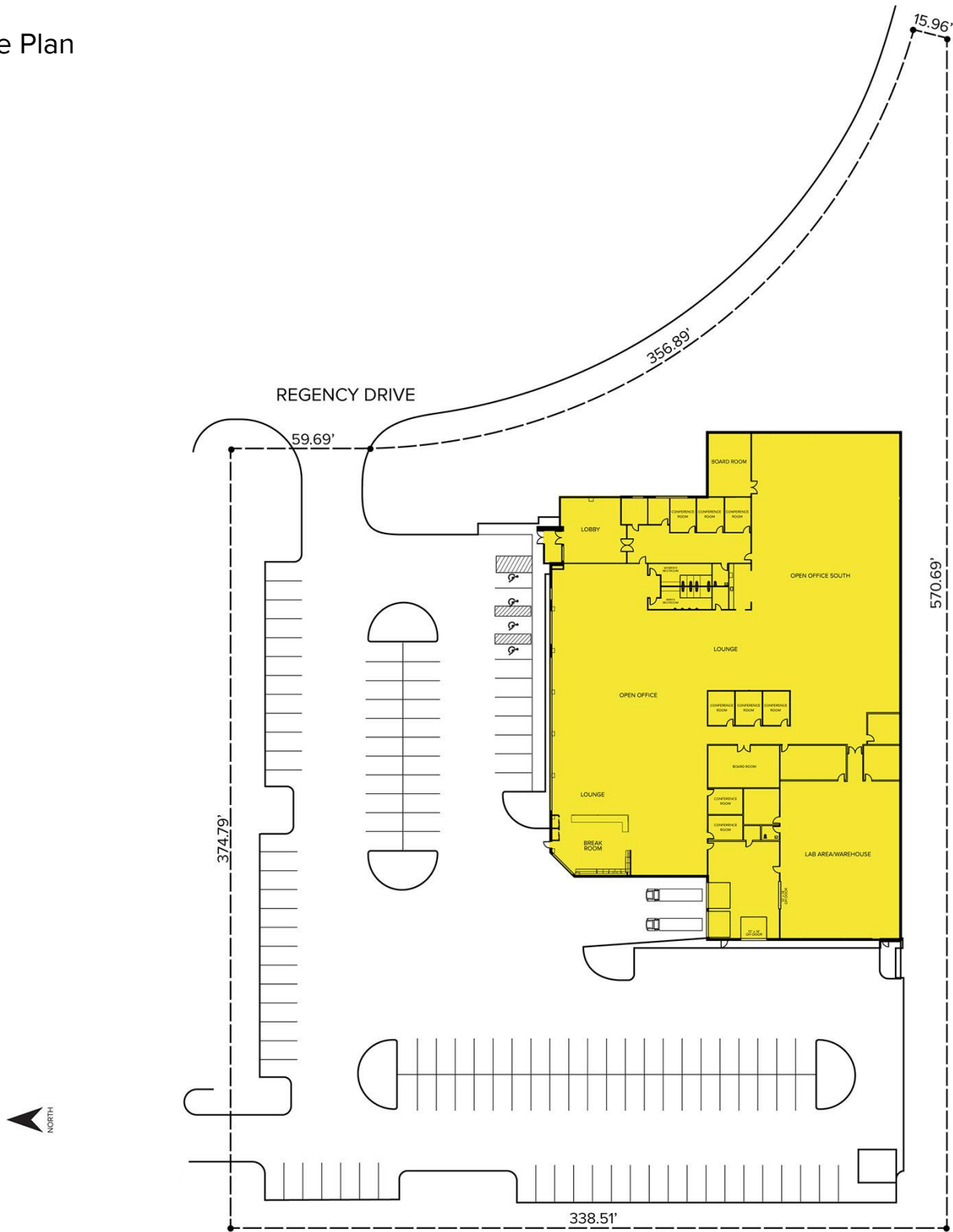
For more information, please contact:

JEFF LEMANSKI
(248) 359 0641
jlemanski@signatureassociates.com

STEVE GORDON
(248) 948 0101
sgordon@signatureassociates.com

SIGNATURE ASSOCIATES
One Towne Square, Suite 1200
Southfield, MI 48076
www.signatureassociates.com

Site Plan



For more information, please contact:

JEFF LEMANSKI

(248) 359 0641

jlemanski@signatureassociates.com

STEVE GORDON

(248) 948 0101

sgordon@signatureassociates.com

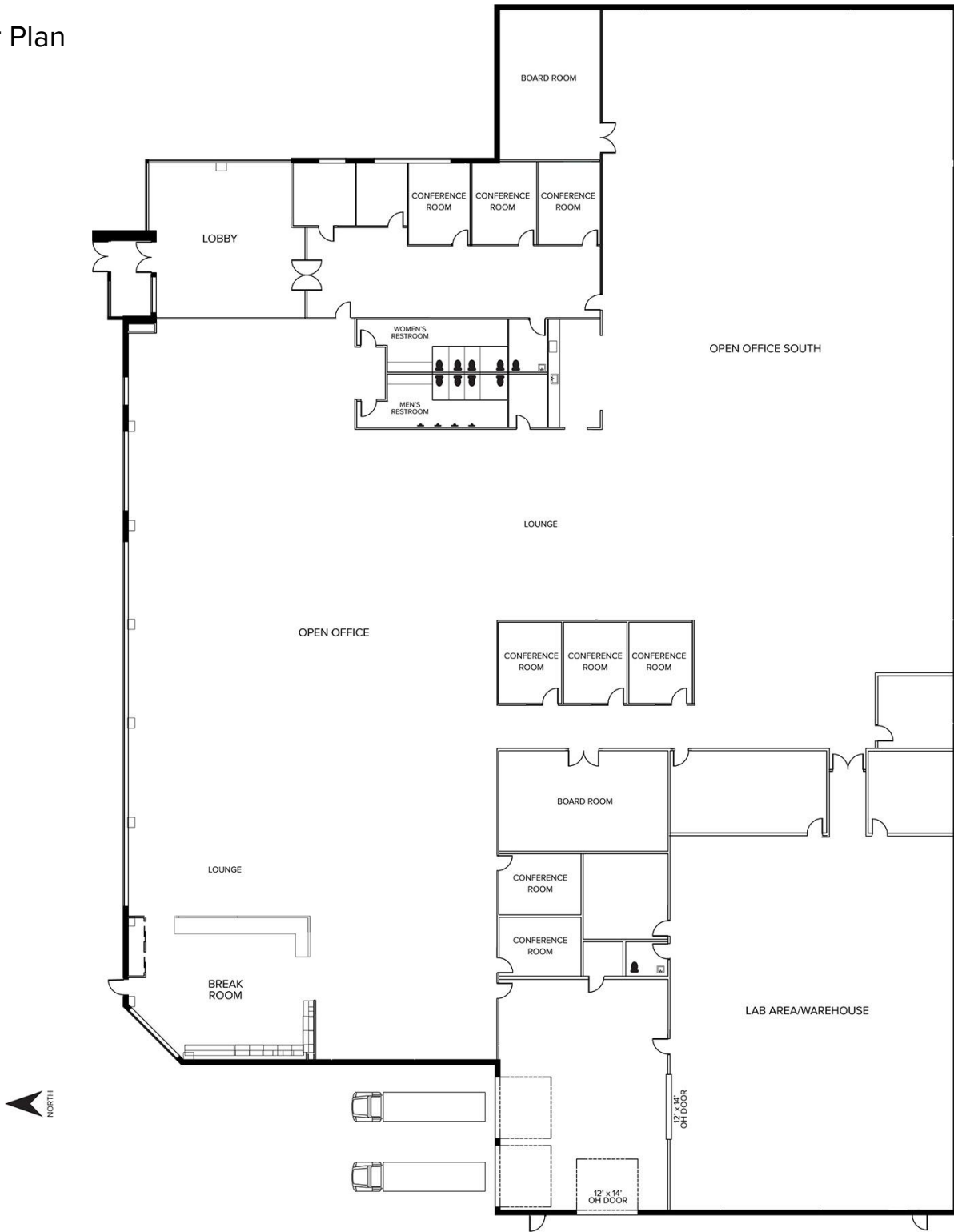
SIGNATURE ASSOCIATES

One Towne Square, Suite 1200

Southfield, MI 48076

www.signatureassociates.com

Floor Plan



For more information, please contact:

JEFF LEMANSKI

(248) 359 0641

jlemanski@signatureassociates.com

STEVE GORDON

(248) 948 0101

sgordon@signatureassociates.com

SIGNATURE ASSOCIATES

One Towne Square, Suite 1200

Southfield, MI 48076

www.signatureassociates.com

25125 Regency Drive – Novi, Michigan

Office For Sublease

10,000-34,285
Square Feet
AVAILABLE

Aerial



For more information, please contact:

JEFF LEMANSKI
(248) 359 0641
jlemanski@signatureassociates.com

STEVE GORDON
(248) 948 0101
sgordon@signatureassociates.com

SIGNATURE ASSOCIATES
One Towne Square, Suite 1200
Southfield, MI 48076
www.signatureassociates.com

Information is subject to verification and no liability for errors or omissions is assumed. Price is subject to change and listing withdrawal.