



UC San Diego

LINK | *Torrey Pines*
UC San Diego Innovation Hub



3366

3344

3377

10350

3333

LINK TODAY WITH YESTERDAY

Perched above the Pacific Ocean and nestled along the 10th hole of the Torrey Pines Golf Course, Link boasts panoramic views, awe-inspiring sunsets and cool ocean breezes. Come be a part of this community rich with history, overlooking a famous course built on the site of Camp Callan, a U.S. Army installation during World War II.

Where great minds come to think

This five building campus is the ideal location for companies large and small looking to relocate to the exclusive corporate community of Torrey Pines. Link fosters an employee focused environment for life science, medical device, technology, software, and research companies looking to hire and retain the best talent possible.



LINKTO INNOVATION

Are you a venture capital firm or a virtual biotech company? Link offers flexible move-in ready office suites for any company seeking an environment that inspires creativity, connection, and ideas.



\$458M

Did you know?

Torrey Pines biotech and healthcare companies have received nearly half a billion in VC funding since 2017. (\$250 million of this was granted in 2018)

Explore. Discover. Change

Whether you are in need of move in ready or customized office space, we've got you covered. We have offices for every company stage, from large full-building tenants to small incubator offices.

Be heard and be seen.

Join the exclusive Torrey Pines community of UCSD, West Health, Sanford Burnham, J. Craig Venter, Lowy Research Institute, General Atomics, Johnson & Johnson, and Pfizer.





SYNTHETIC GENOMICS®

SORRENTO
VALLEY



SBP

© Johnson & Johnson

SBP



THE
SCRIPPS
RESEARCH
INSTITUTE

VERTEX

TORREY PINES

LINK

Torrey Pines

UC San Diego Innovation Hub

Gary & Mary
West Wireless Health
Institute™

coNKwest



astellas



GENERAL ATOMICS



ThermoFisher
SCIENTIFIC



SALK INSTITUTE
FOR BIOLOGICAL STUDIES

UC San Diego

SORRENTO

Surrounding neighbors

Calibr	Sequenom
Synthetic Genomics	West Wireless Health
BD	Salk Institute
TSRI	Astellas
Celgene	Takeda
The Medicines Company	General Atomics
SBP	Pacira
TSRI	Regulus
Vertex	
Johnson & Johnson	
Novartis	
CoNKwest	
BASF	
aTyr Pharma	

LINKTO INNOVATION





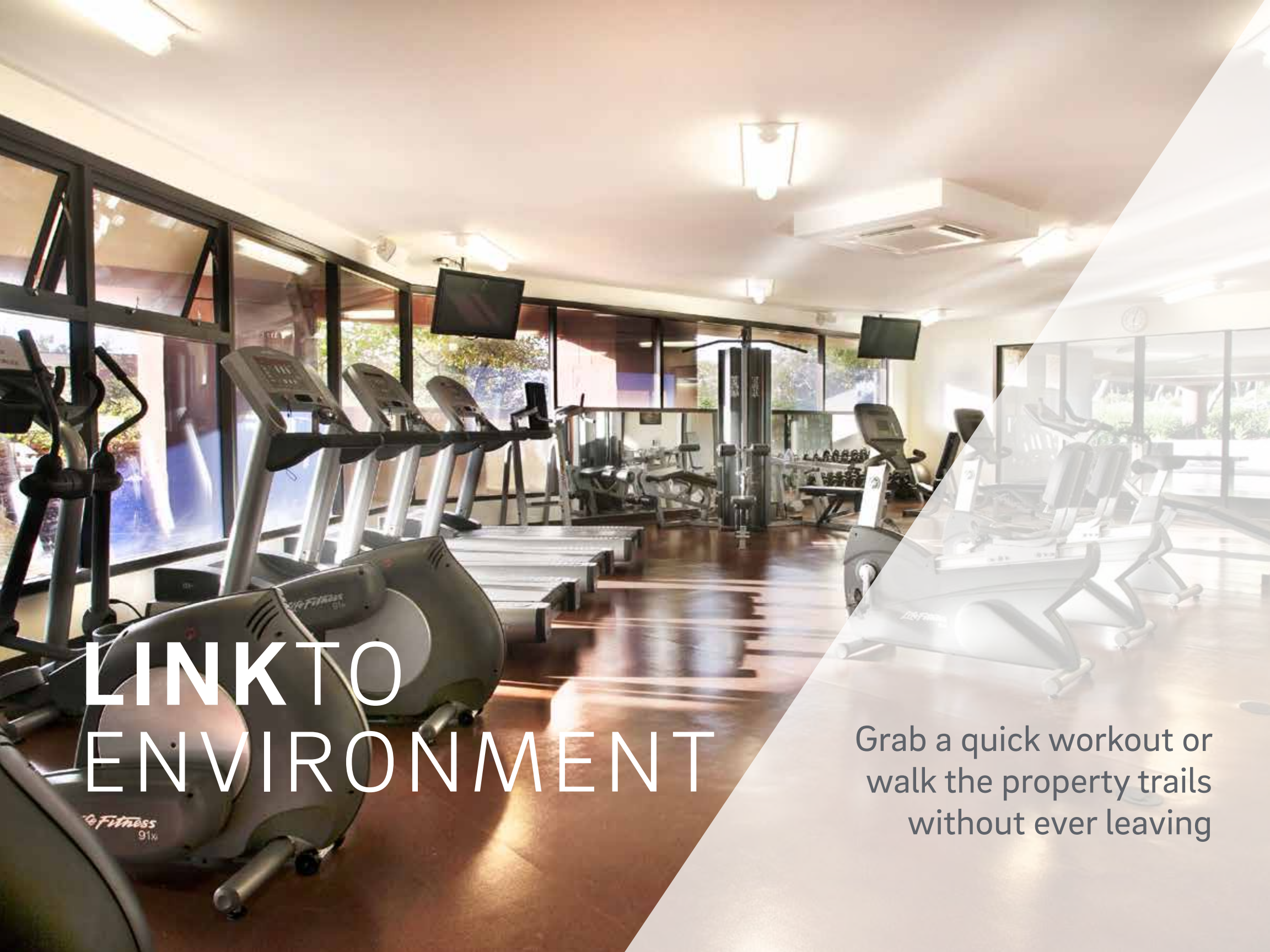
Inspire creativity and connect

on campus without ever needing to leave. Enjoy our gym, shower and lockers, impromptu gathering spaces, and incredible views overlooking the Torrey Pines Golf Course and ocean.

Golf, hike, surf, paddle, run and glide... We offer the quickest access to San Diego's best outdoor activities without wasting extra time.

LINKTO ENVIRONMENT





LINK TO ENVIRONMENT

Grab a quick workout or
walk the property trails
without ever leaving





LINK TO CHANGE

Are you looking for concrete floors, expansive window lines and modern finishes? Link will change the way you work with just the right workspace.

Availability Summary

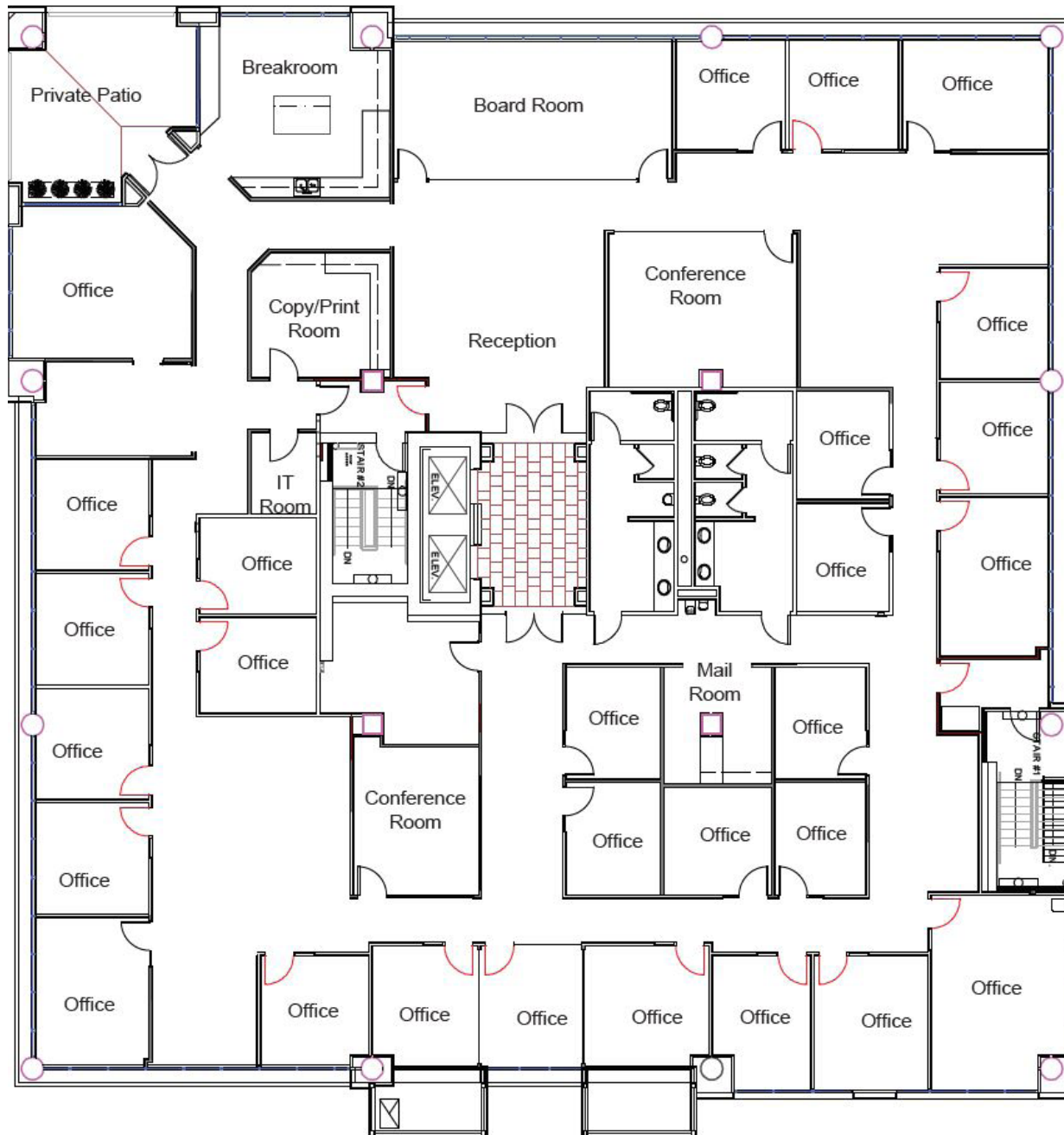
Building - Suite	RSF	Details
3333 – Suite 400	13,487	Top floor space with beautiful golf course and ocean views. Dense private office build-out with versatile size range. 1 large board room, 2 conference rooms and a number of huddle rooms. Private patio directly next to large break-area with unmatched ocean/golf course views.
3344 – Suite 100	9,090	High-end office space with ocean and golf course views. Private balcony.
3344 – Suite 200	12,887	High-end office space with ocean and golf course views. Private balcony.
3344 – Suite 100 & 200*	21,917 (combined*)	High-end office space with ocean and golf course views. Private balconies.
3366 – Suite 100	3,125	3 offices, conference room, break area, and balance open office.
3366 – Suite 110	2,321	Creative space with exposed ceilings, partial ocean views, 2 meeting rooms, conference room, open kitchen, and balance open office.
3366 – Suite 130	3,100	New creative spec suite with ocean views, 3 offices, room for 8 cubicles, conference room, open concept kitchen. See finishes on last page of brochure.
3366 – Suite 225	2,377	Creative office build out with ocean views. Exposed ceilings & floor to ceiling window line.
3377 – Suite 150	9,095	Shell space. Direct entry from building exterior. Potential creative space. Peak ocean views.

3333 N. Torrey Pines Ct. Suite 400 | available now

↑ West



Ocean & golf course views



13,487 s.f.

- Top floor space with beautiful golf course/ ocean views
- Dense private office build-out with versatile size range
- 1 large board room
- 2 conference rooms & number of huddle rooms
- Private patio directly next to large break-area with unmatched ocean/golf course views



http://bit.ly/3333_400



↑ West

3344

Ocean & golf course views



3344 N. Torrey Pines Ct. Suite 100 | available now

- 9,090 s.f. (+ 2nd floor = 21,917 s.f.)
- Ocean and golf course views
- Beautiful, high-end Class A office space with a private balcony
- Lots of glass and upgraded finishes
- 13 offices, boardroom, kitchen, support rooms and open space



http://bit.ly/3344_100

↑ West

3344

Ocean & golf course views



3344 N. Torrey Pines Ct. Suite 200 | available now

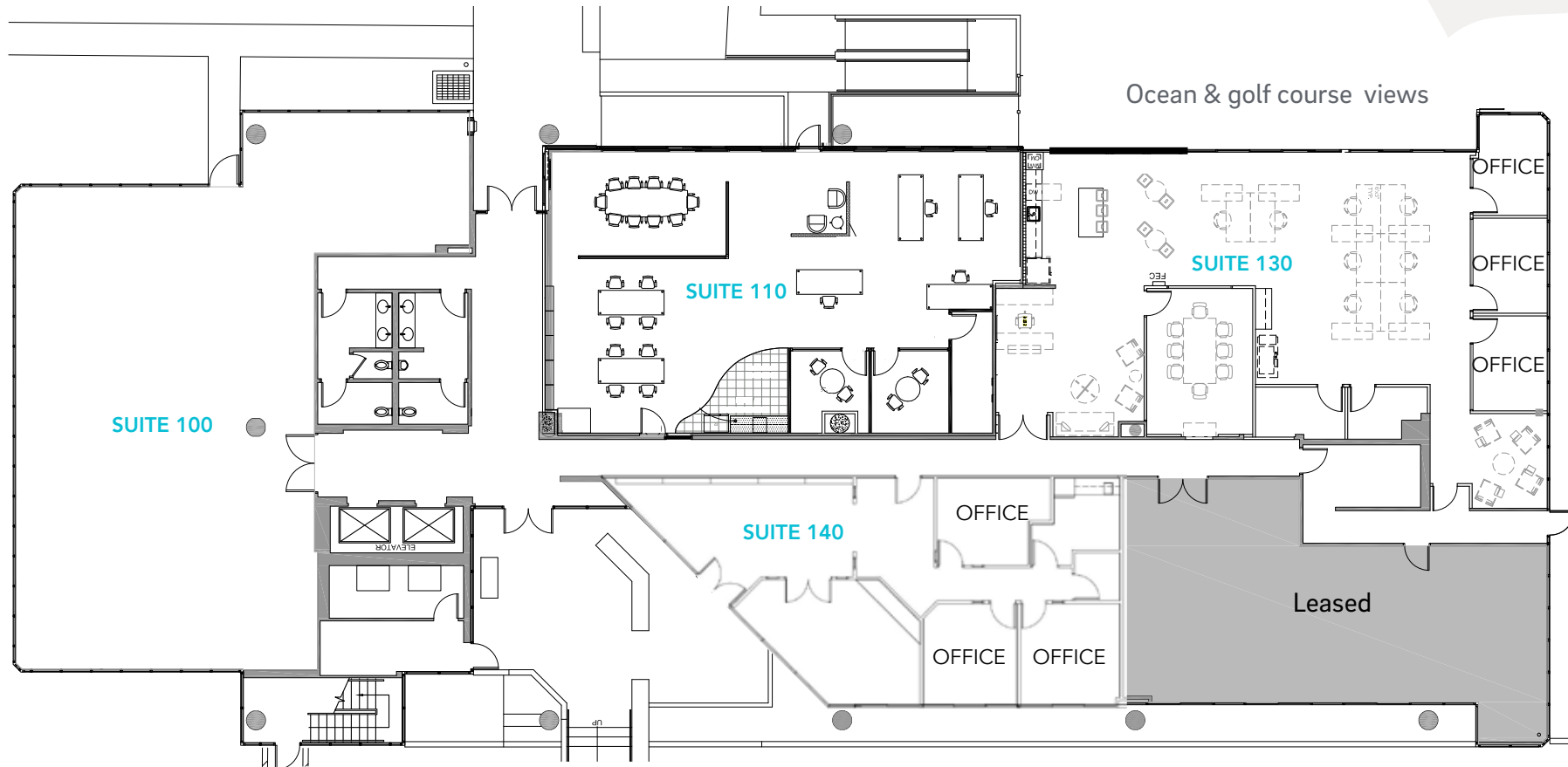
- 12,887 s.f. (+ 1st floor = 21,917 s.f.)
- Ocean and golf course views
- Beautiful, high-end Class A office space with a private balcony
- Lots of glass and upgraded finishes
- 27 offices, boardroom, kitchen, support rooms and open space



http://bit.ly/3344_200

3366 N. Torrey Pines Ct.
Suites 100, 110 & 130 | available now

↑ West



Suite 100

- 3,125 s.f.
- 3 offices
- Conference room
- Break area
- Balance open office

Suite 110

- 2,321 s.f.
- Creative space w/exposed ceilings
- Partial ocean views
- 2 meeting rooms
- Conference room
- Open kitchen
- Balance open office



http://bit.ly/3366_110

Suite 130

- 3,100 s.f.
- New creative spec suite w/ocean views
- 3 offices
- Room for 8 cubicles
- Conference room
- Open concept kitchen
- See finishes on last page of brochure

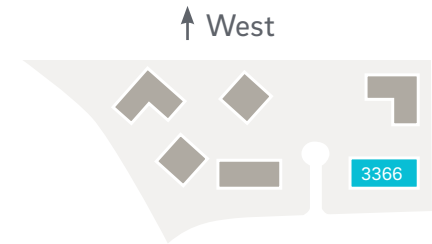


http://bit.ly/3366_130

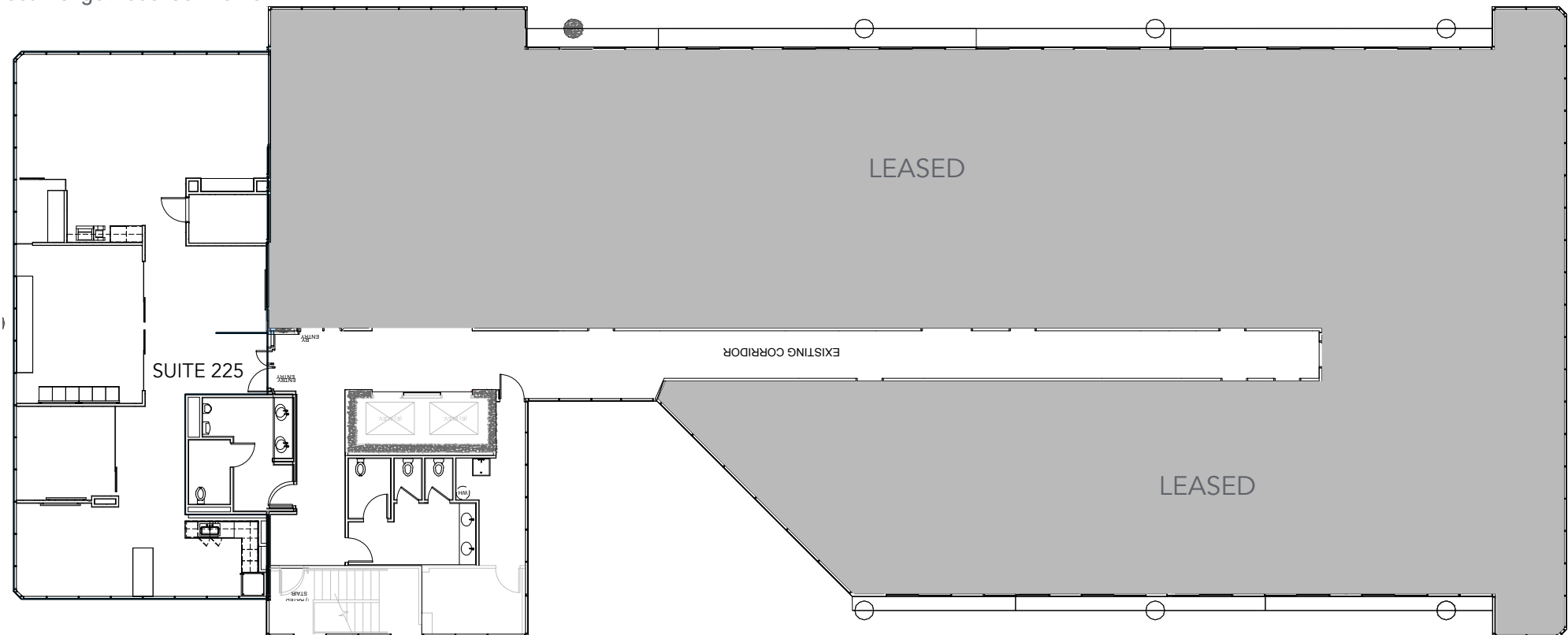
Suite 140

- 1,722 s.f.
- 3 offices
- Conference room
- Break area
- Reception
- IT/server room

3366 N. Torrey Pines Ct. Suite 225 | available now



Ocean & golf course views



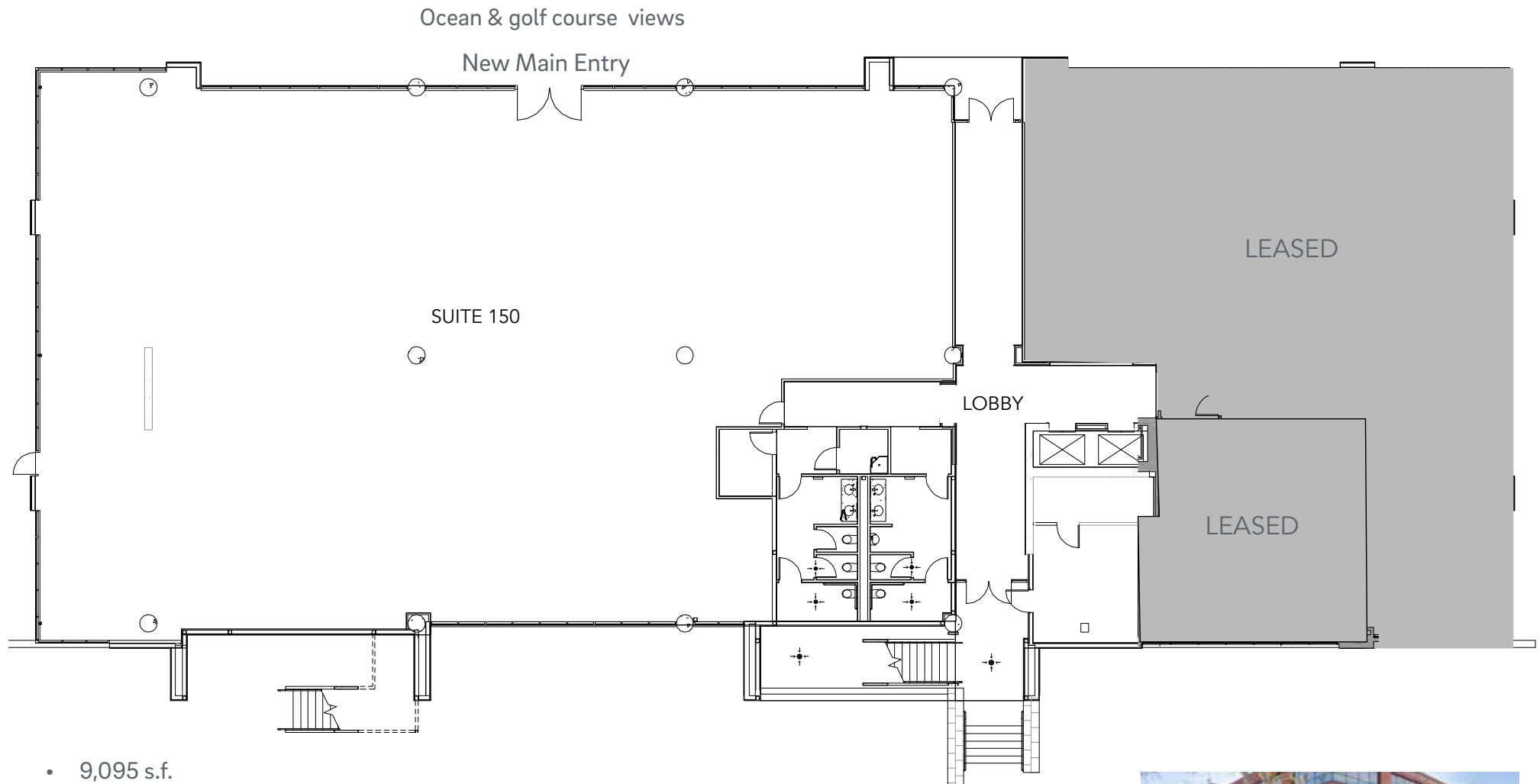
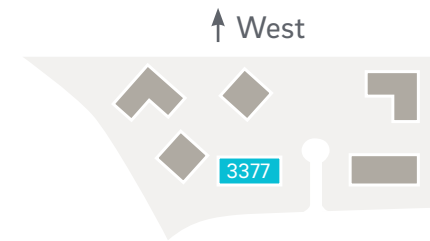
- 2,377 s.f. creative office build out with ocean views
- Exposed ceilings and floor to ceiling window line
- 2 private offices
- 1 conference room
- Reception area
- Break-area



http://bit.ly/3336_225



3377 N. Torrey Pines Ct. Suite 150 | available now



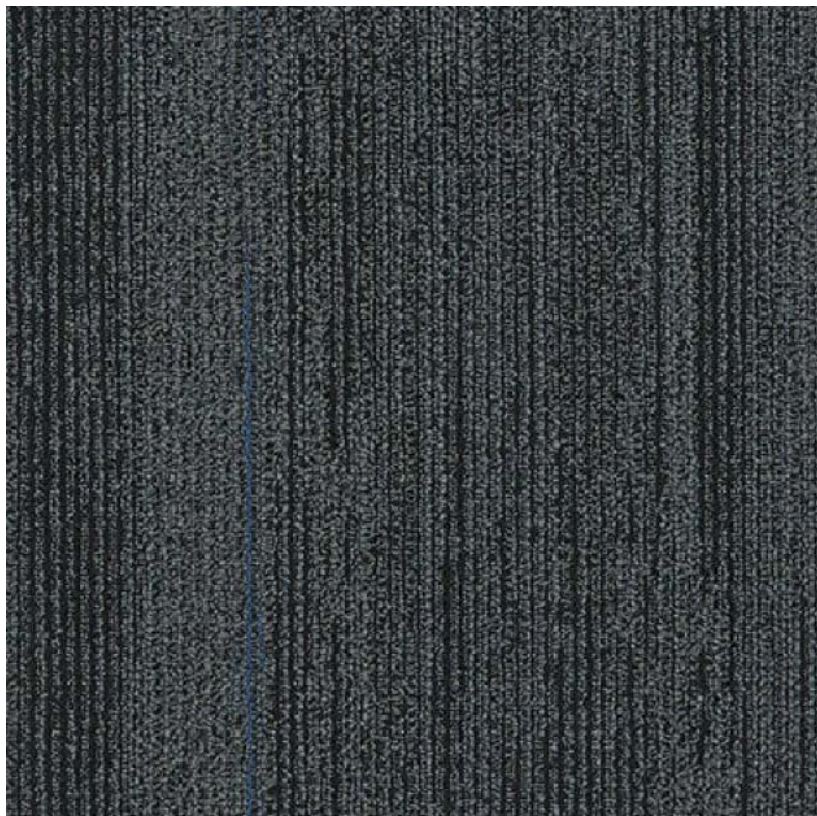
- 9,095 s.f.
- Shell Condition - potential creative space
- Direct entry from building exterior
- Peak ocean views



http://bit.ly/3377_150



Spec Suite Finishes



CARPET



ENTRY CHANDELIER



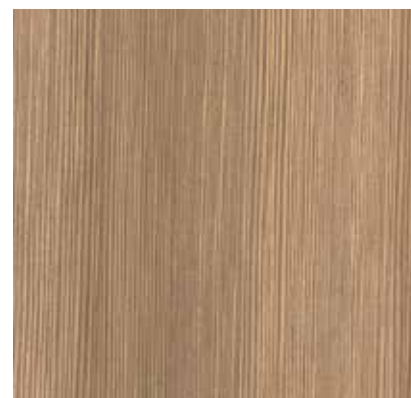
ISLAND PENDANT



GENERAL LIGHTING



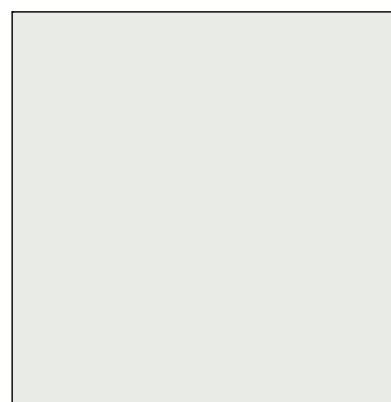
SOLID SUFACE COUNTERTOP



MILLWORK LAMINATE



TILE BACKSPLASH



FIELD PAINT



WALL BASE



Tim Olson
858.410.1253
t.olson@am.jll.com
RE lic. #01364117

Chad Urie
858.410.1187
chad.urie@am.jll.com
RE lic. #01261962

Grant Schoneman
858.410.1152
grant.schoneman@am.jll.com
RE lic. #01516695

Although information has been obtained from sources deemed reliable, neither Owner nor JLL makes any guarantees, warranties or representations, express or implied, as to the completeness or accuracy as to the information contained herein. Any projections, opinions, assumptions or estimates used are for example only. There may be differences between projected and actual results, and those differences may be material. The Property may be withdrawn without notice. Neither Owner nor JLL accepts any liability for any loss or damage suffered by any party resulting from reliance on this information. If the recipient of this information has signed a confidentiality agreement regarding this matter, this information is subject to the terms of that agreement. ©2019. Jones Lang LaSalle IP, Inc. All rights reserved.