



**3,151 S.F. BUILDING**  
**OFFICE/WAREHOUSE**

---

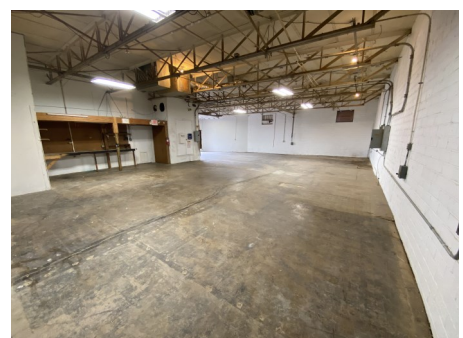
**HEAVY 3-PHASE  
POWER**

**SECURITY  
SYSTEM**

**12' CLEAR HEIGHT**

**GREAT PARKING**

**SECURED YARD  
AVAILABLE FOR  
ADDITIONAL RENT**



**KARSON CONRAD**  
CELL 214.918.6243  
OFFICE 214.630.7077  
kconrad@batesandmyers.com