

For Lease

±2,678 SF | Medical Office Building

3741 Sunset Lane | Antioch, CA

Highlights



Free standing ±2,678 SF building situated on ±0.46 acres



Circular driveway servicing the building, and abundant parking



Located directly adjacent to Sutter Delta Hospital, Antioch CA



Retail and food services within a short walk

Contact Brokers

Eric Erickson, SIOR

Executive Vice President
CA License No. 01177336
eric.erickson@colliers.com
+1 925 279 5580

Curt Scheve, SIOR

Executive Vice President
CA License No. 00916122
curt.scheve@colliers.com
+1 925 279 5593

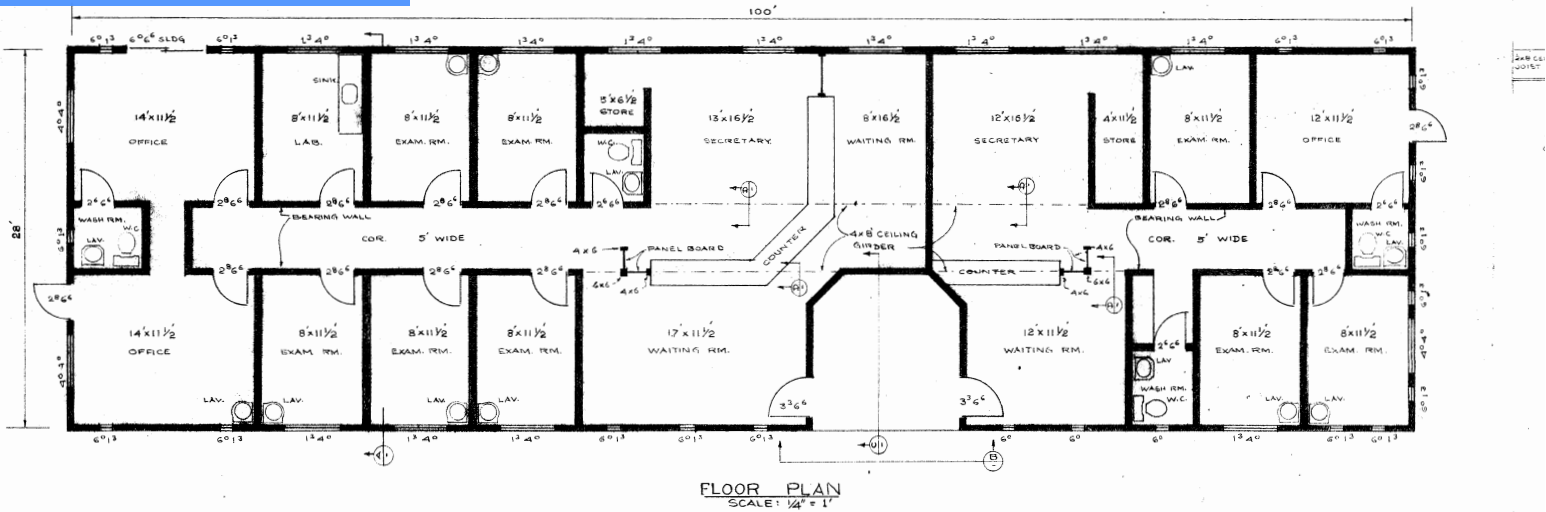
Colliers

1850 Mt. Diablo Blvd,
Suite 200
Walnut Creek, CA 94596
colliers.com

3741 Sunset Lane | Antioch, CA

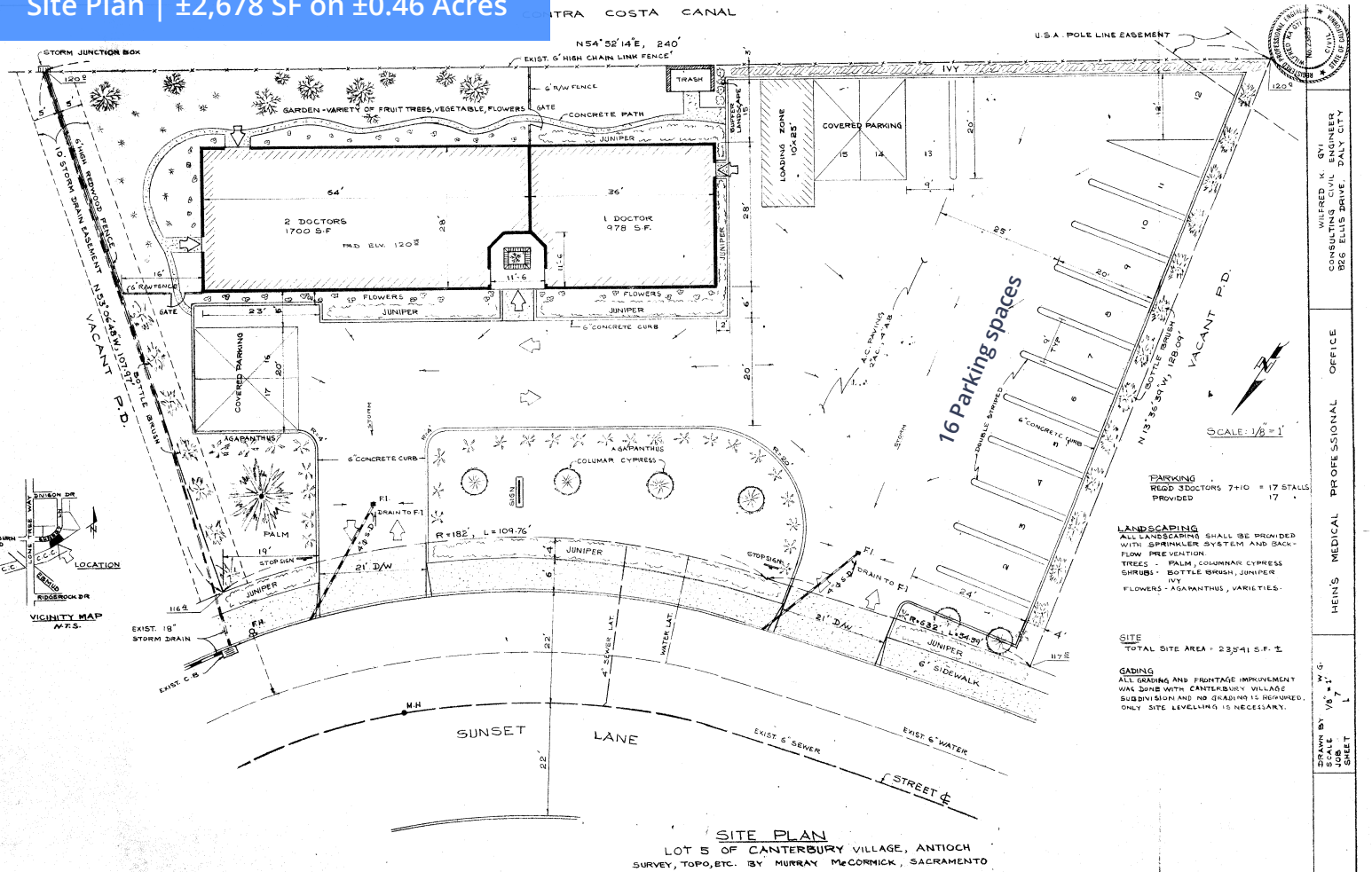


Floor Plan | ±2,678 SF



FLOOR PLAN
SCALE: 1/4" = 1'

Site Plan | ±2,678 SF on ±0.46 Acres



WALTER K. GUY
 CONSULTING CIVIL ENGINEER
 825 ELLIS DRIVE, DAILY CITY
 HEIN'S MEDICAL PROFESSIONAL OFFICE
 DRAWN BY VS, 17
 SCALE 1/8" = 1'
 SHEET 1

3741 Sunset Lane | Antioch, CA

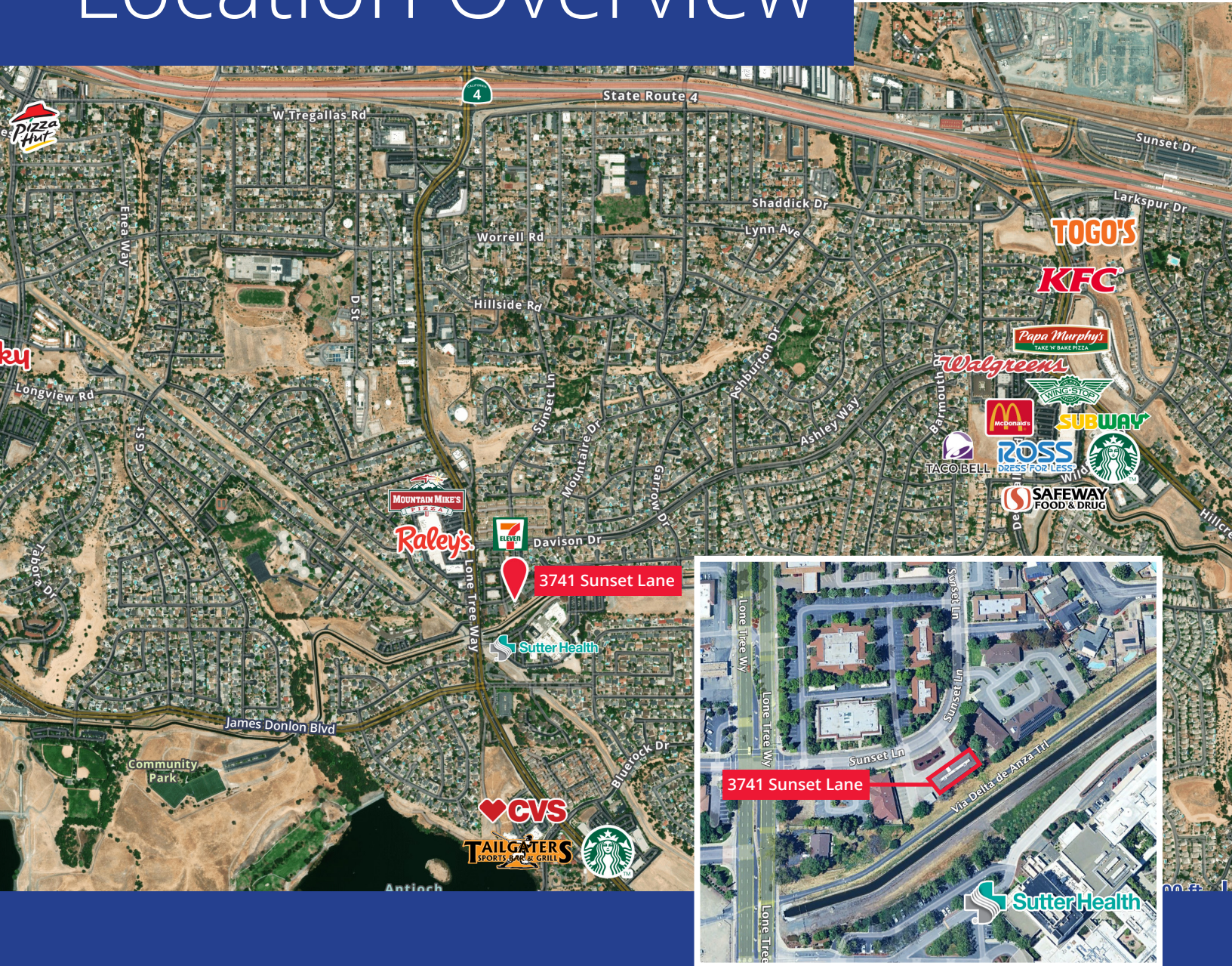
Antioch Zoning



Use	Zoning (Commercial Office)	Permit
Day-care centers	C-0	U
Hospice	C-0	U
Government offices	C-0	P
Psychiatric/chemical dependency	C-0	U
Medical care—urgent	C-0	U
Religious assembly	C-0	U
Schools, private and preschools	C-0	U
Laboratories; medical, dental, optical	C-0	P
Medical (includes clinics)	C-0	P
Pharmacy	C-0	P
Veterinary Services	C-0	P

3741 Sunset Lane | Antioch, CA

Location Overview



Demographics 5 mile radius



Total Population

180,674



Households

55,385



Median Household
Income

\$103,448



Annual Household
Spending:
Health Care

\$8,238