

GORDON

COMMERCIAL REAL ESTATE BROKERAGE

AVAILABLE FOR LEASE: Office/Retail, and Flex Spaces

• **472 and 478 7TH STREET, OAKLAND, CA** •



IN DOWNTOWN OAKLAND NEAR CHINATOWN, JUST 4 BLOCKS TO JACK LONDON SQUARE WATERFRONT

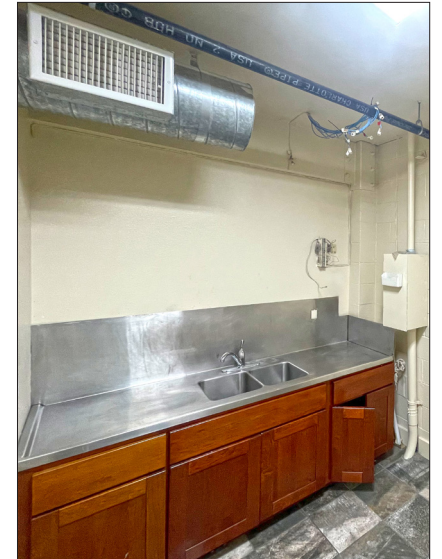
• • • • •

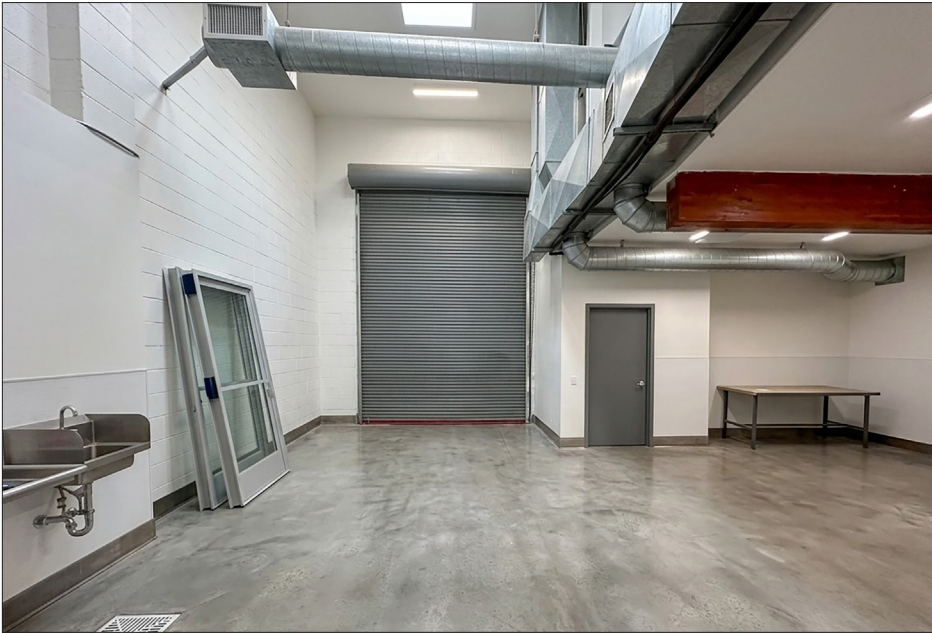
CONTACT: JONATHAN NEWMAN

510 898-2122

• jnewman@gordoncommercial.com

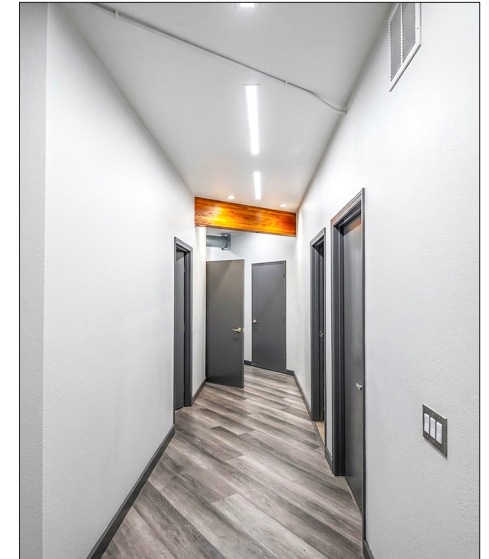
• DRE# 02118083

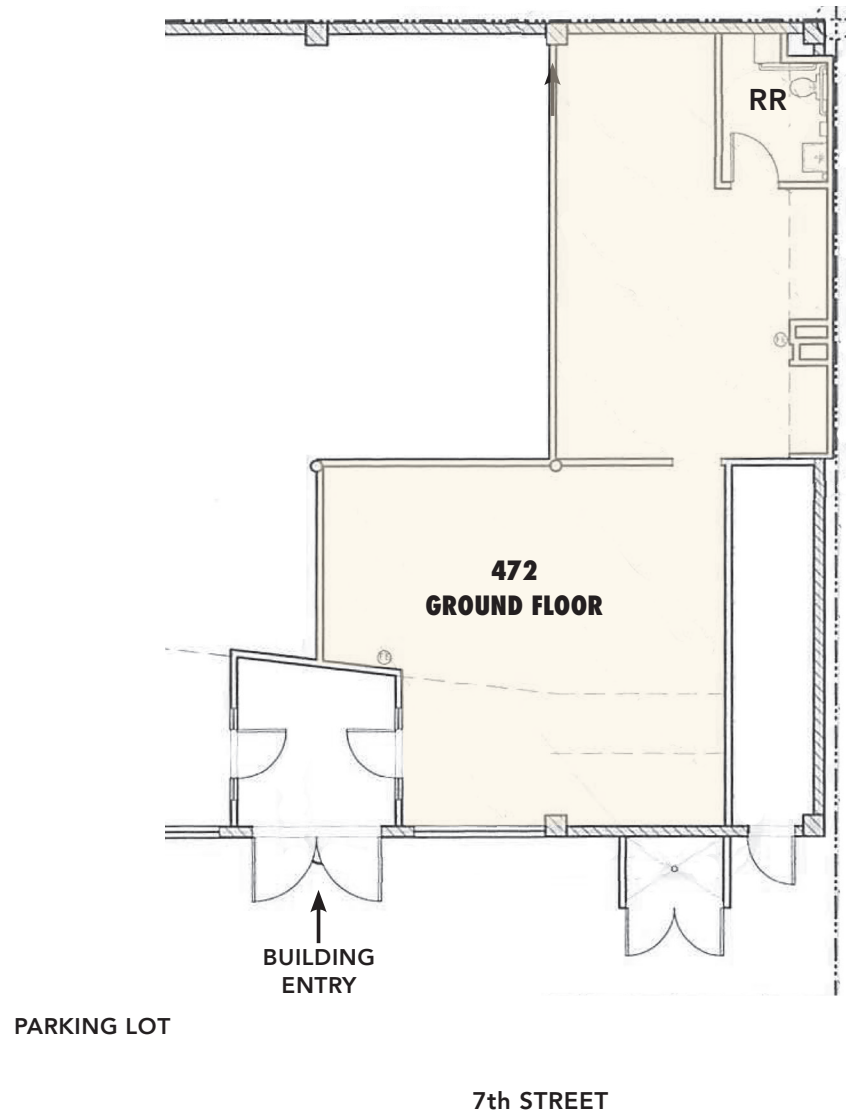




**PERFECT FOR CREATIVE USE,
LIGHT MANUFACTURING,
MEDIA PRODUCTION, OFFICE,
OR COMMERCIAL KITCHEN**

- **ROLL-UP DOOR**
- **SPRIAL STAIRCASE TO
MEZZANINE**





This drawing is intended to be used as an aid in planning. Though care was taken in drawing this floor plan, accuracy is not guaranteed.

- Excellent freeway access (within 1 block)
- Near Old Oakland Farmer's Market
- 2 blocks to Lana's Hamburger Restaurant (voted Best Burgers + Ice cream last 4 years)
- 4 blocks to Jack London Square eateries, wineries, breweries, and more
- 5 minute walk to Lake Merritt BART
- 6 minute walk to 12th Street BART
- 6 minute walk to Oakland Museum of California
- 7 minute walk to Pacific Renaissance Plaza Mall, as well as Lincoln Square Park
- 7 blocks to SF Bay Ferry and Amtrak train station
- Easy walk to many popular destinations including Sana'a Cafe, Earth Grown juice shop, Ming's Tasty, Napoleon Super Bakery, Oeste Bar, Full House Cafe, Popoca restaurant, Oeste - Bar, Oakland Grill, New Gold Medal Restaurant, Alice Street Bakery, and Blue Bottle Coffee
- Less than 1 mile to Lake Merritt



The information contained herein has been provided by the owner of the property or other sources we deem reliable. We have no reason to doubt its accuracy, but we cannot guarantee it. All information should be verified prior to leasing.