

**RARE EXISTING SCHOOL/
DAY CARE OPPORTUNITY**
CHICAGO ILLINOIS

AVAILABLE
AUGUST
2026

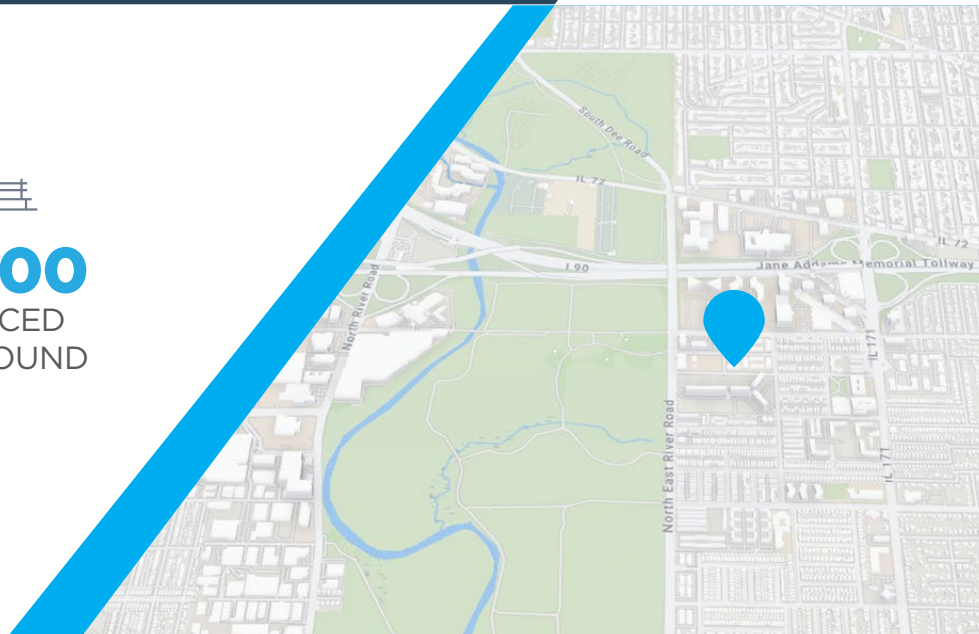


13,140
SQUARE FEET

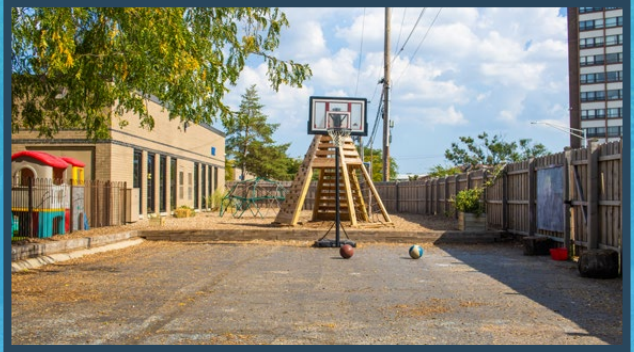
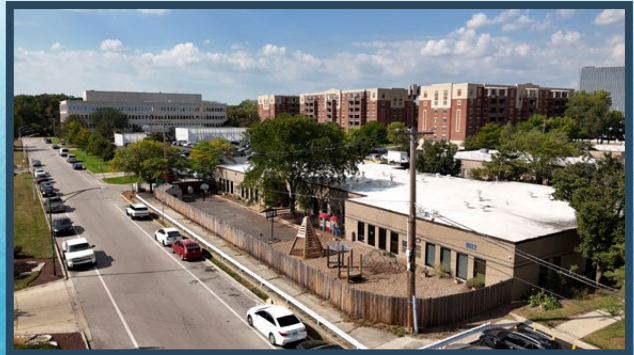
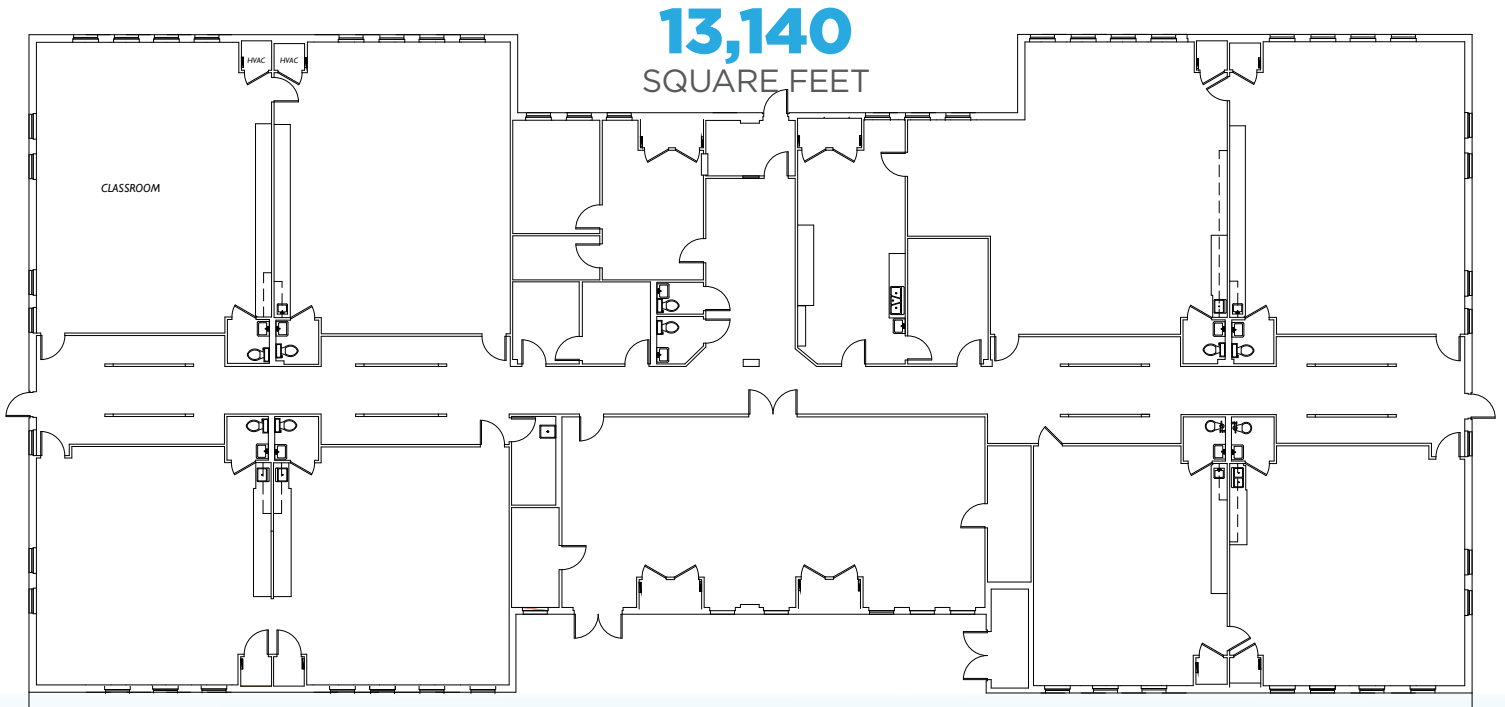


±8,500
SF FENCED
PLAYGROUND

CONCOURSE CHICAGO
8622 W CATALPA, CHICAGO IL



**EXISTING SCHOOL / DAY CARE
AVAILABLE AUGUST 2026**



8,500 SF PLAYGROUND

13,604 SF EXISTING SCHOOL / DAY CARE



**13,604 SF existing Day Care
Attached Outdoor Playground
- 8,500 SF
Available August 2026**

**Lobby & Administrative Area
Kitchen/Breakroom
Multipurpose Room
Eight large classrooms**



FLEXIBLE ROOM LAYOUTS



FOR INFORMATION, CONTACT

STEVE CHRASTKA

630 317 0746
schrastka@hiffman.com

JASON WURTZ

630 693 0692
jwurtz@hiffman.com



THE ADJACENT PICNIC AREAS AND WALKING TRAILS OF CATHERINE CHEVALIER WOODS ARE WITHIN A 5-MINUTE WALK.

OWNED AND MANAGED BY



BERGER ASSET MANAGEMENT

LEASED BY

NAHiffman
Commercial Real Estate Services, Worldwide