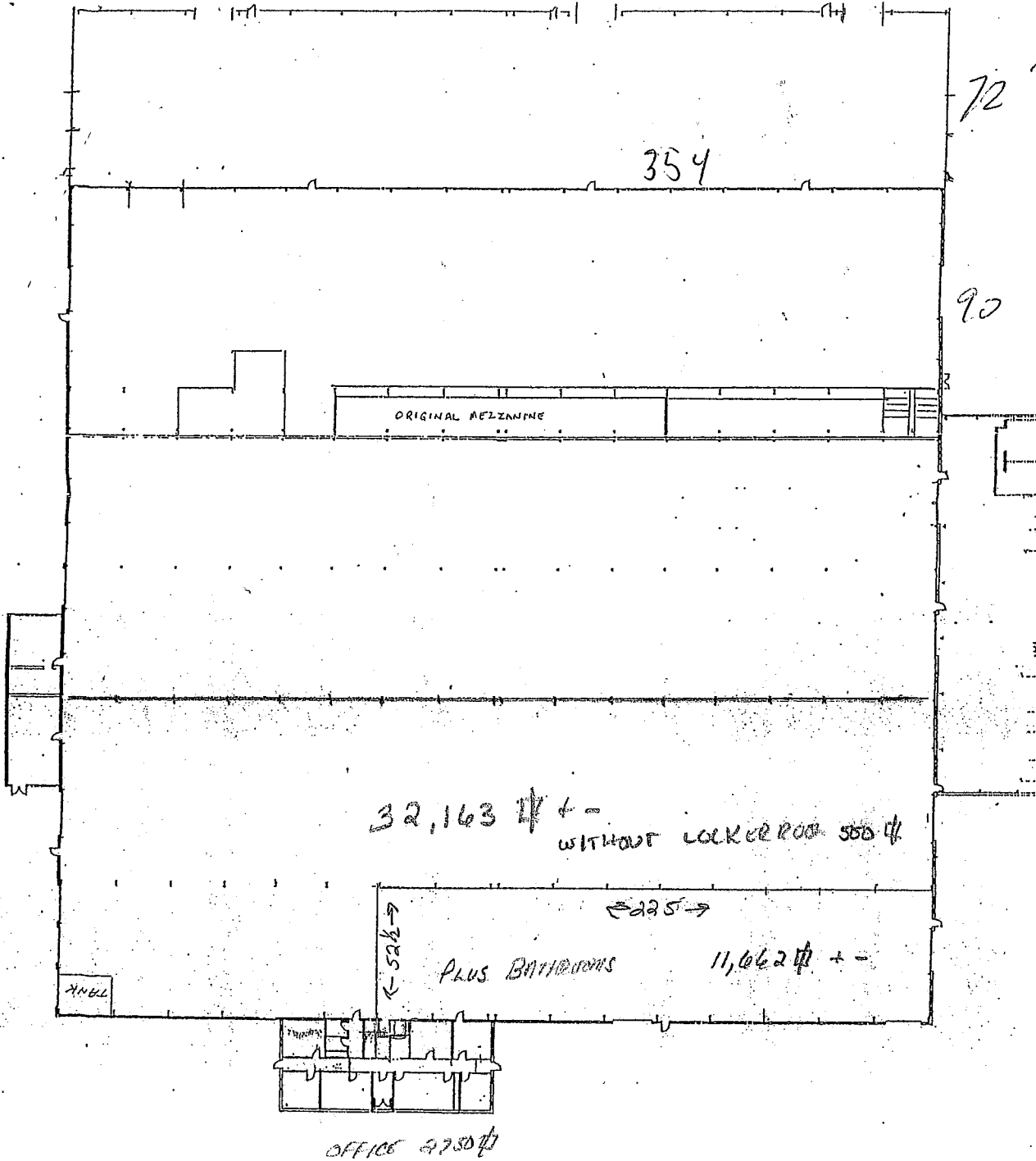


EXHIBIT "A"

Lerner/Pavlick Realty Co.



WATER AUTHORITY

ROBERT D. JR
DAISY G. JACK

JOHN FALVELLA
FAL-INN CORP.

STA. DL253+06
STA. K221+62.11
STA. S10+00

NORMAN KERMANSHACH
STONE CA

LANE

LERNER-PAVLICK REALTY CORP.

SHIRIN KERMANSHACH

COLDEN MANSION RUINS

RONALD MC DONALD

CITY OF NEW YORK DEPT. OF CATSKILL

ENVIRONMENTAL PROTECTI
AQUEDUCT

PROPOSED CUL-DE-SAC

DRURY LANE

MEET EXISTING PAV'T.
STA. K235+50

WOLFSON,
JANICE GROLLEY
& FELICIA

