

For Sublease Historic Downtown Office Space

218 King Street, Charleston, South Carolina 29401



- Suite D is approximately 1,388 sf office space with four large windows facing King Street with an abundance of natural light
- Historical downtown location at the corner of King and Market Streets above the Fresh Produce Retail Store
- Three private offices, one large conference room, a kitchenette, printer room and IT room
- Two fireplaces, hardwood floors throughout, crown molding and upscale finishes
- Surface parking lot located behind the Building and parking garage across the street
- Listed well below market rate for \$23.50 psf Gross
- MLS # 30530291

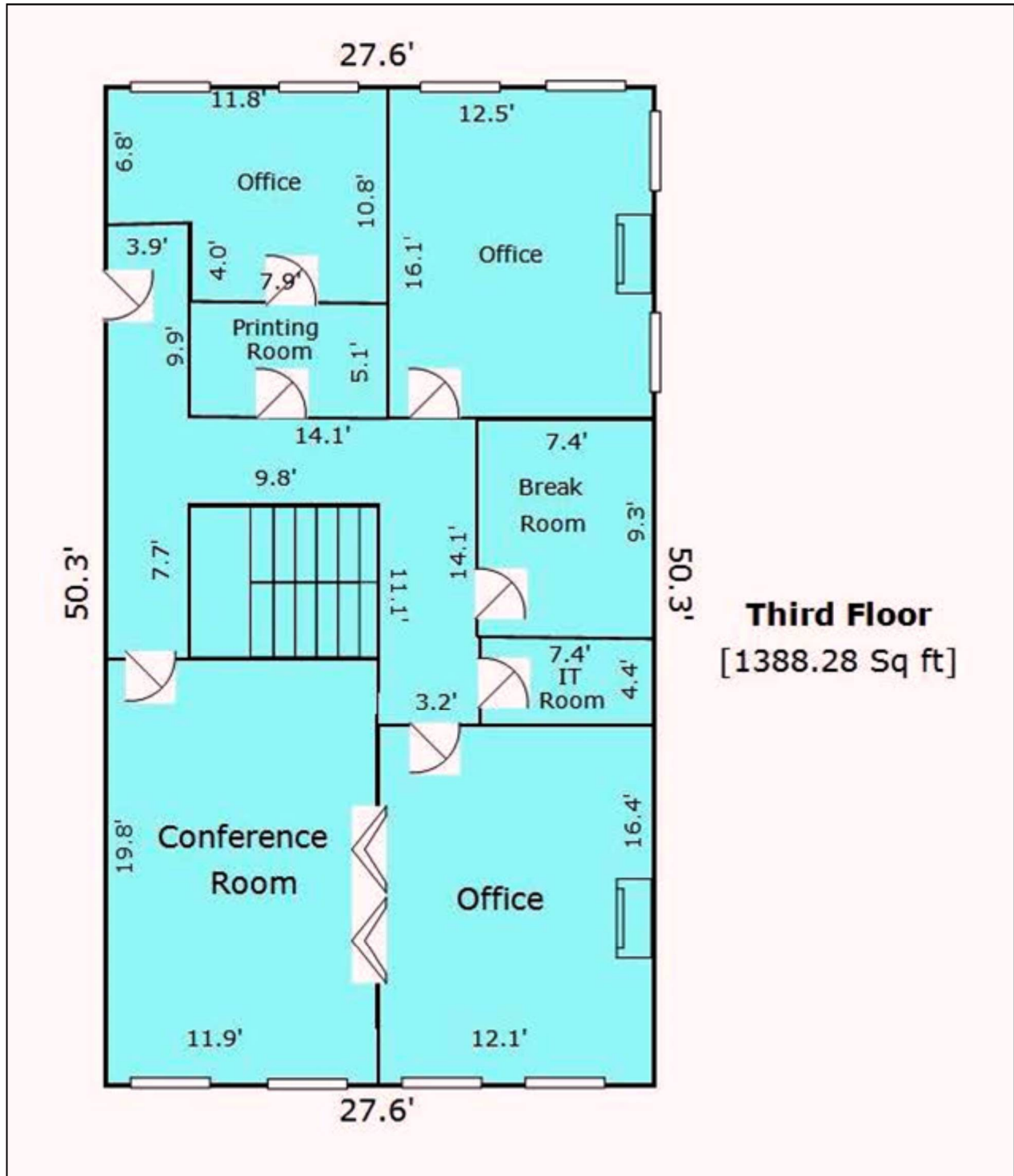
KORT STUTZ

211 King Street, Suite 300 • Charleston, South Carolina 29401
843.513.9931 Mobile • 843.722.2615 Office
kstutz@thebeachcompany.com

BEACH
COMMERCIAL
A DIVISION OF THE BEACH COMPANY

For Sublease

Third Floor Office Space



KORT STUTZ
211 King Street, Suite 300 • Charleston, South Carolina 29401
843.513.9931 Mobile • 843.722.2615 Office
kstutz@thebeachcompany.com

BEACH
COMMERCIAL
A DIVISION OF THE BEACH COMPANY

For Sublease

Third Floor Office Space



Specifications:

- Charleston County
- City of Charleston
- Tax Map #457-08-02-024
- Third floor office space
- Suite is accessible from both King Street and Market Streets by an interior stairwell and elevator

KORT STUTZ

211 King Street, Suite 300 • Charleston, South Carolina 29401
843.513.9931 Mobile • 843.722.2615 Office
kstutz@thebeachcompany.com

BEACH
COMMERCIAL
A DIVISION OF THE BEACH COMPANY