

FOR SALE OR LEASE >

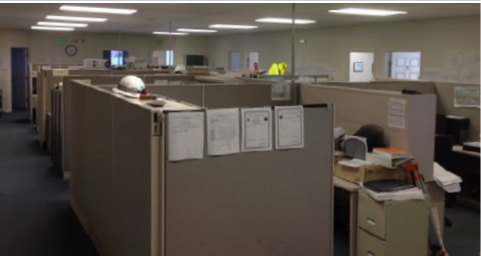
# ±7,234 SF Office/Warehouse Building

DELTA BUSINESS PARK > 2625 CROW COURT AT VERNE ROBERTS CIRCLE, ANTIOCH CALIFORNIA



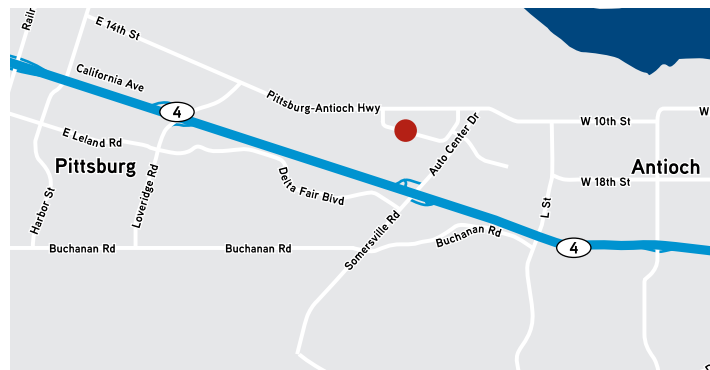
Asking Sale Price:  
**\$950,000**

- > Move-in condition office areas and adjacent warehouse with restrooms.
- > Situated on 1.15 acre, yard areas adjacent to building
- > Zoned M-I, flexible zoning includes Commercial, Office R&D, Light Industrial, Manufacturing and Warehouse
- > Two grade level toll-up doors
- > Excellent freeway access to Highway 4
- > Located near the to Century Plaza Shopping Center and across the street from Costco
- > Available with 60 days notice
- > 1,000 Amps @ 277/480v
- > Existing companies in the Delta Business Park include Costco, AAA, Abbey Carpet, AT&T, AIRCOLD & Reliance Steel.
- > Additional pad for future ±8,700 SF building



## Office / Warehouse Building For Sale or Lease

The Delta Business Park is a mixed use master planned development located near the intersection of the Highway 4 and Somersville Road in Eastern Contra Costa County. The Park offers an excellent location for light industrial, wholesale, assembly, research & development, back offices, manufacturing and distribution uses.



## Contact Information



**BILL HILLIS SIOR**  
+1 925 279 5578  
bill.hillis@colliers.com  
license 01262007

**CURT D. SCHEVE SIOR**  
+1 925 279 5593  
curt.scheve@colliers.com  
license 00916122

FOR SALE OR LEASE >

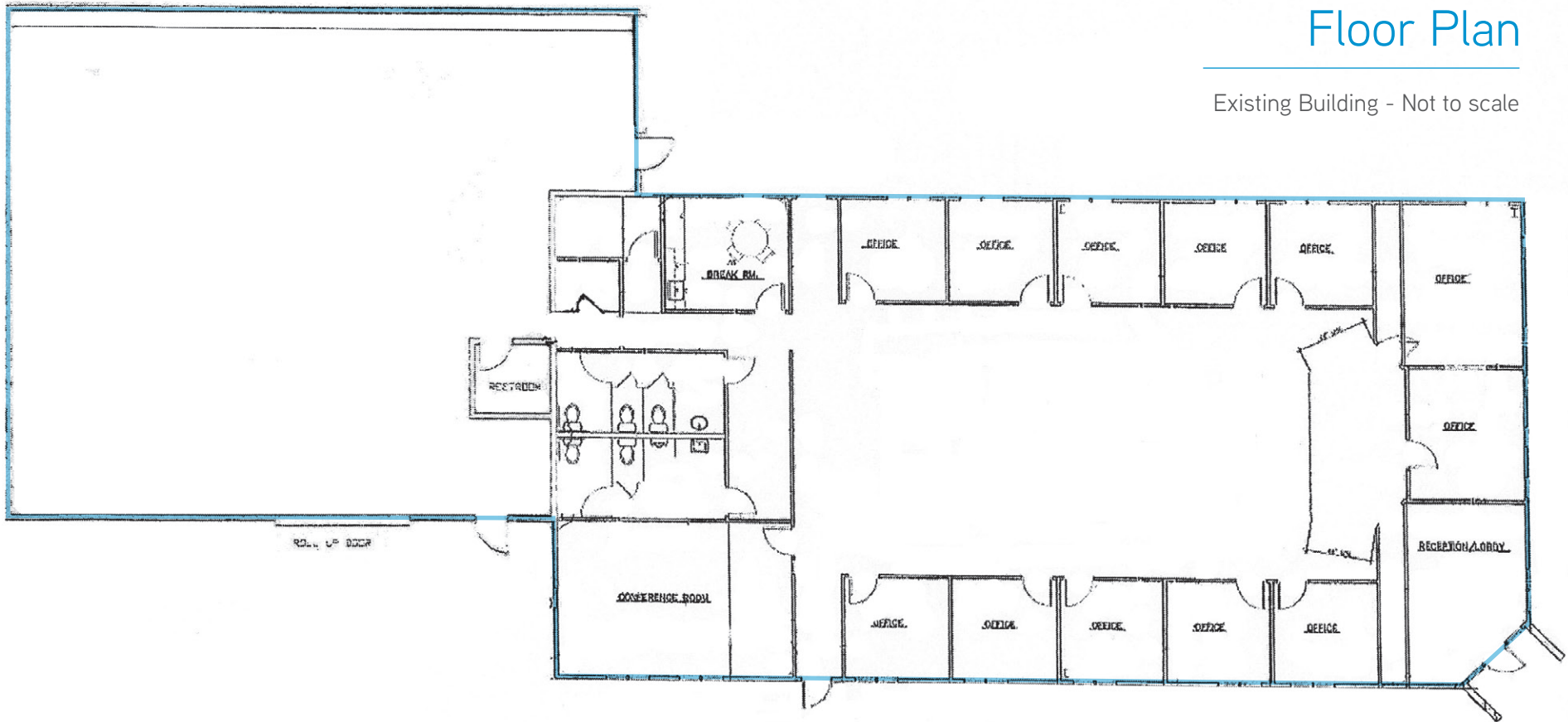
# ±7,234 SF Office/Warehouse Building



DELTA BUSINESS PARK > 2625 CROW COURT AT VERNE ROBERTS CIRCLE, ANTIOCH CALIFORNIA

## Floor Plan

Existing Building - Not to scale



## Contact Information

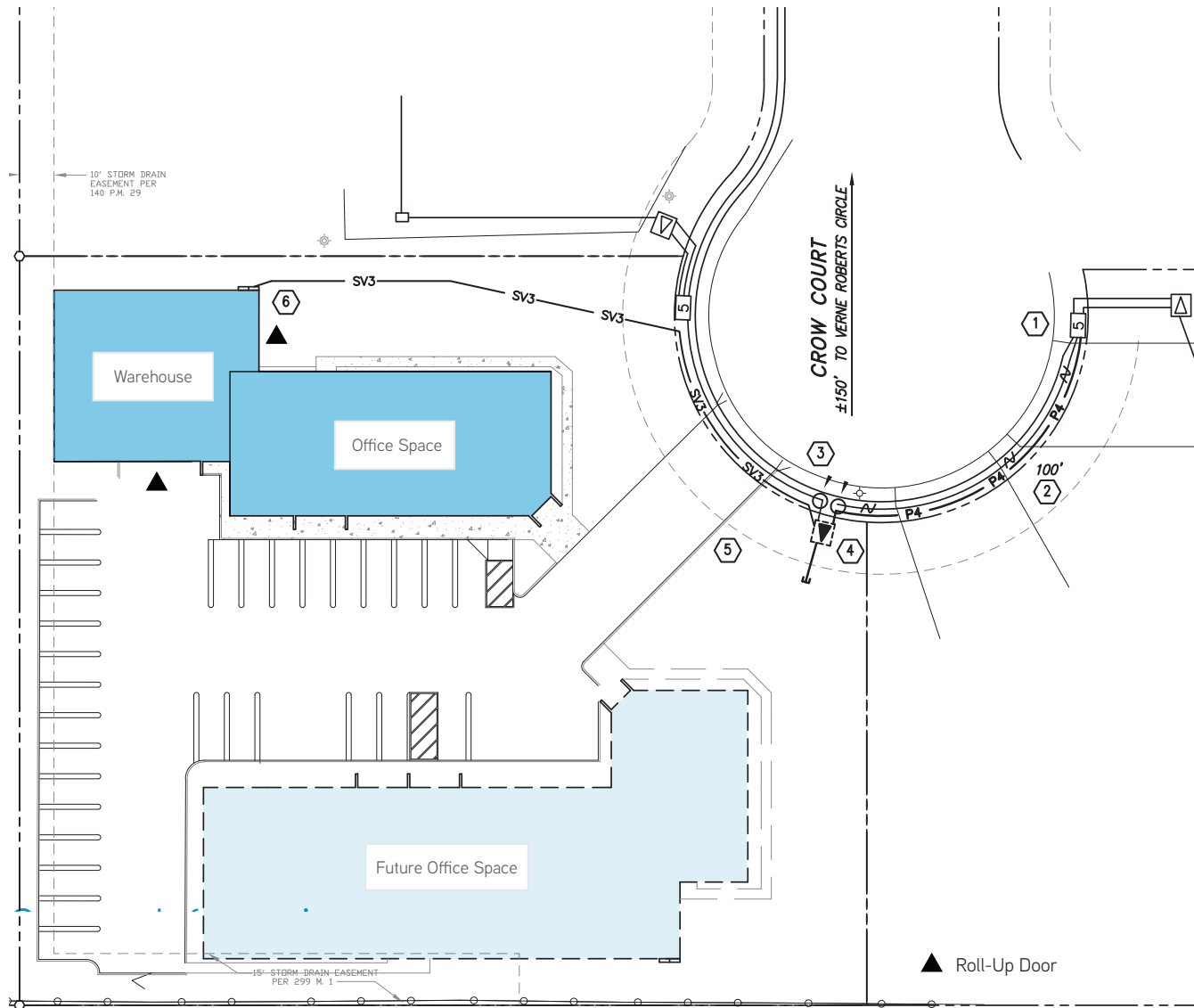
**BILL HILLIS SIOR**  
+1 925 279 5578  
bill.hillis@colliers.com  
license 01262007

**CURT D. SCHEVE SIOR**  
+1 925 279 5593  
curt.scheve@colliers.com  
license 00916122

FOR SALE OR LEASE >

# ±7,234 SF Office/Warehouse Building

DELTA BUSINESS PARK > 2625 CROW COURT AT VERNE ROBERTS CIRCLE, ANTIOCH CALIFORNIA



## Contact Information

**BILL HILLIS SIOR**

+1 925 279 5578

bill.hillis@colliers.com

license 01262007

**CURT D. SCHEVE SIOR**

+1 925 279 5593

curt.scheve@colliers.com

license 00916122

Colliers International

1850 Mt. Diablo Blvd

Suite 200

Walnut Creek, CA 94596

+1 925 279 0120 phone

+1 925 279 0450 fax

[www.colliers.com](http://www.colliers.com)