

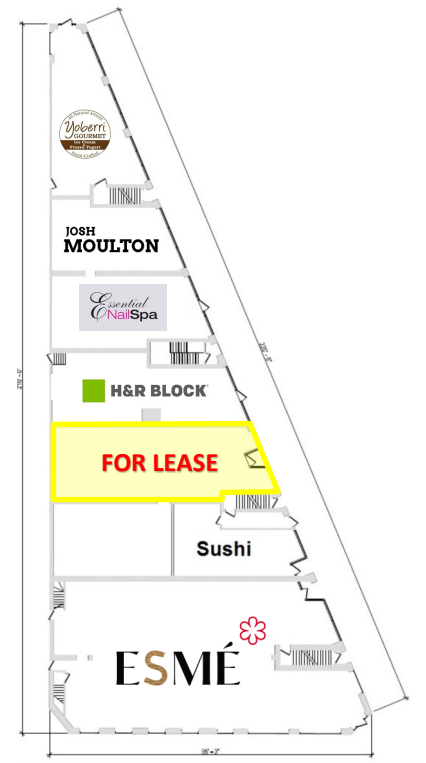


**LINCOLN PARK**  
**±2,170 SF Prime Retail/Office Space For Lease**

<b>Size:</b>	±2,170 SF
<b>Rental Rate:</b>	\$45 PSF
<b>Lease Type:</b>	GROSS
<b>Zoning:</b>	B3-3

**Highlights:**

- Prime retail or office space on highly walkable Clark Street.
- Located on ground level of a 35-unit mixed—use building in densely populated Lincoln Park.
- Directly 1 block west of Lincoln Park Zoo (drawing over 3.6M visitors annually).
- Co-tenant with a Michelin-starred fine dining restaurant (Esme), sushi restaurant (Green Tea), H&R block, nail salon, fine art shop (Josh Moulton), and yogurt shop.
- Served by CTA’s Fullerton and Armitage Brown and Purple Line stations.



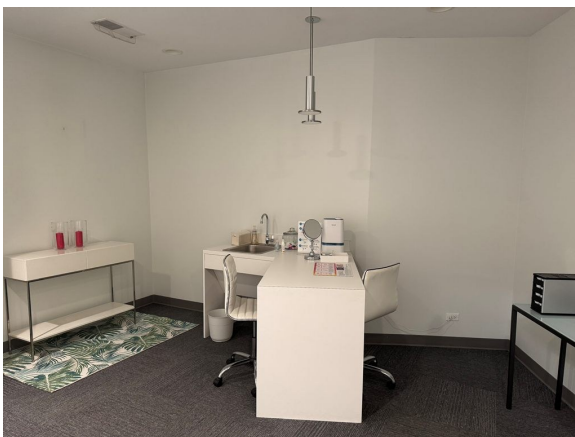
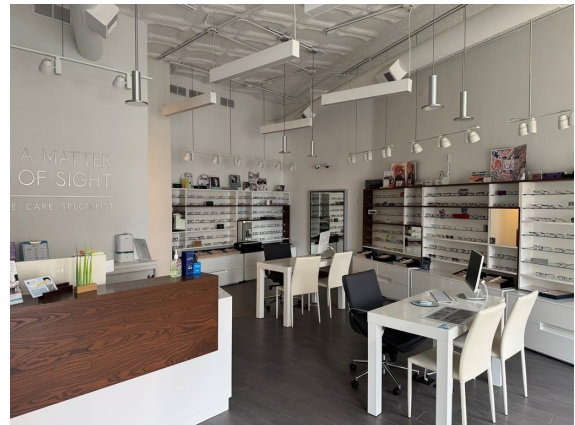
**CRAIG WOLF**

847-989-9653

CRAIG@STRAUSSREALTY.COM

**STRAUSS REALTY, LTD.**  
4220 W. MONTROSE AVENUE  
CHICAGO, ILLINOIS 60641  
PHONE: 773-736-3600

## LINCOLN PARK ±2,170 SF Prime Retail/Office Space For Lease



**CRAIG WOLF**  
847-989-9653  
CRAIG@STRAUSSREALTY.COM

**STRAUSS REALTY, LTD.**  
4220 W. MONTROSE AVENUE  
CHICAGO, ILLINOIS 60641  
PHONE: 773-736-3600

### Retail & Site Map



**CRAIG WOLF**

847-989-9653

CRAIG@STRAUSSREALTY.COM

**STRAUSS REALTY, LTD.**  
4220 W. MONTROSE AVENUE  
CHICAGO, ILLINOIS 60641  
PHONE: 773-736-3600