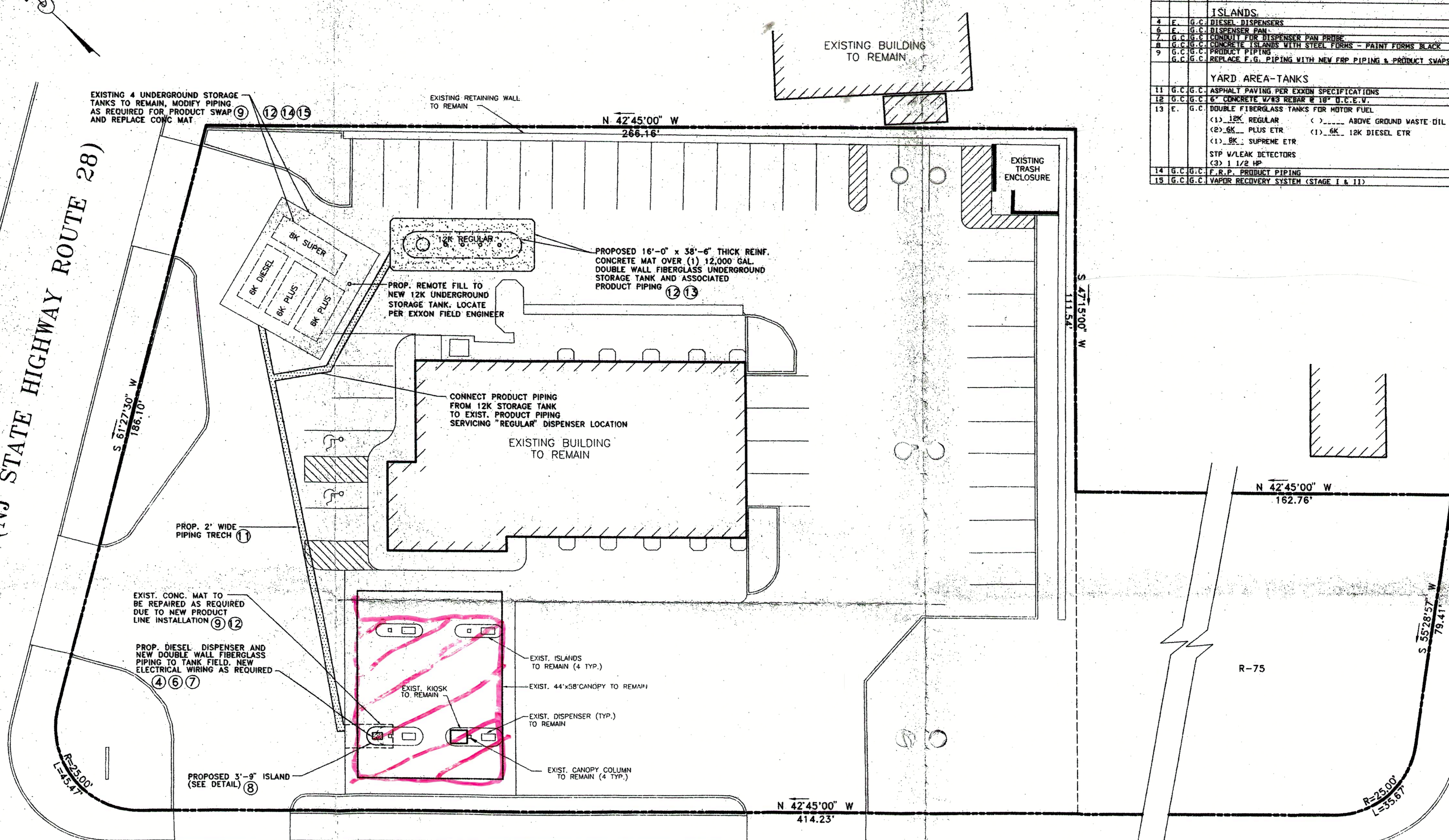


Exclusion Zone Plan

SOUTH AVENUE (NJ STATE HIGHWAY ROUTE 28)

LA GRANDE AVE.



GENERAL NOTES			
		B.S.	= BUILDING SUPPLIER
		G.C.	= GENERAL CONTRACTOR
		E.	= EXXON
		O.	= OTHER
		1. ALL UTILITY CONNECTIONS ARE TO BE AS PER LOCAL CODE BY G.C.	
		2. G.C. TO PROVIDE CONDUIT & WIRING TO ALL EXXON I.D. SIGNS & CONDUIT ONLY TO PUBLIC TELEPHONE BOOTH	
		3. SITE PLAN SUPERSEDES ALL WORKING DRAWINGS	
		4. UNLESS OTHERWISE NOTED, ALL PAINT TO BE FURNISHED BY G.C.	
		5. ALL DISTURBED AREAS WITHIN PAVEMENT SHALL BE REPAIRED WITH FULL DEPTH ASPHALT PAVEMENT	
ISLANDS			
4	F.	G.C.	DIESEL DISPENSERS 2000, 243, 7006F, 1-
6	F.	G.C.	DISPENSER PAN 7500, 1, 7006F, 1-
7	G.C.	G.C.	CONDUIT FOR DISPENSER PAN PROBE 2000, 243, 7006F, 1-
8	G.C.	G.C.	CONCRETE ISLANDS WITH STEEL FORMS - PAINT FORMS BLACK 80025A, 1-4
9	G.C.	G.C.	PRODUCT PIPING 7006F, 1-5
	G.C.	G.C.	REPLACE F.G. PIPING WITH NEW FRP PIPING & PRODUCT SWAPS
YARD AREA-TANKS			
11	G.C.	G.C.	ASPHALT PAVING PER EXXON SPECIFICATIONS 80025A, 1-4
12	G.C.	G.C.	6" CONCRETE W/43 REBAR @ 18" O.C.E.V. 80025A, 1-4
13	E.	G.C.	DOUBLE FIBERGLASS TANKS FOR MOTOR FUEL 7006F, 1-5
			(1) 12K REGULAR < > ABOVE GROUND WASTE OIL TANK
			(2) 6K PLUS ETR (1) 6K 12K DIESEL ETR
			(1) 8K SUPREME ETR
			STP W/LEAK DETECTORS
			(3) 1 1/2 HP
14	G.C.	G.C.	F.R.P. PRODUCT PIPING
15	G.C.	G.C.	VAPOR RECOVERY SYSTEM (STAGE I & II)

TERRILL ROAD (COUNTY ROAD NO. 611)