



FOR SUBLEASE

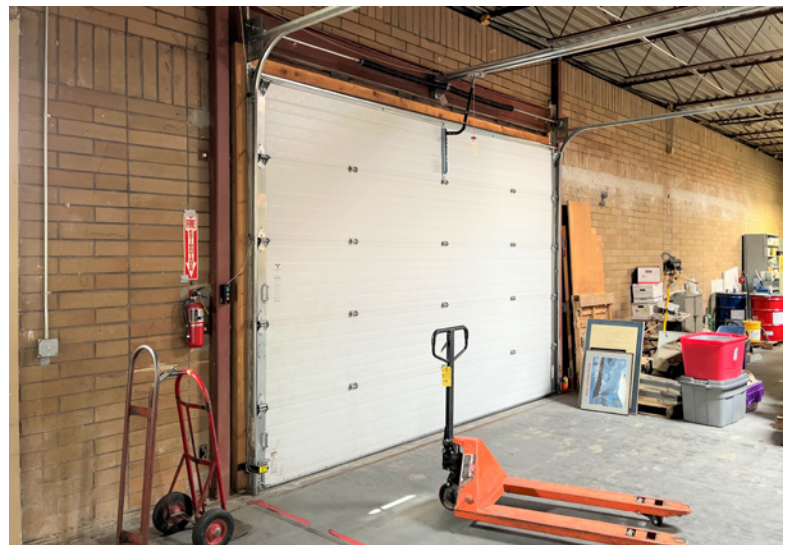
# OfficeWarehouse with Showroom

460 West Lawndale Drive, Salt Lake City, UT



## Property Highlights

- Asking \$0.99 PSF, MG
- 12,000 SF
- 1,000 SF Office
- 3,000 SF Showroom (open office)
- GL Door 8'X9'
- GL Door 14'X10'
- Skylights
- Floor drain(s)
- 480v power (277v, 208v 120v)
- Three restroom (one shower)
- Available immediately
- Current lease runs through June 30, 2026



**Kyle McMullin**  
Senior Director  
+1 801 303 5480  
kyle.mcmullin@cushwake.com

**Paul Westenskow**  
Senior Director  
+1 801 303 5557  
paul.westenskow@cushwake.com

170 South Main Street, Suite 1600  
Salt Lake City, UT 84101  
Main +1 801 322 2000  
[cushmanwakefield.com](http://cushmanwakefield.com)

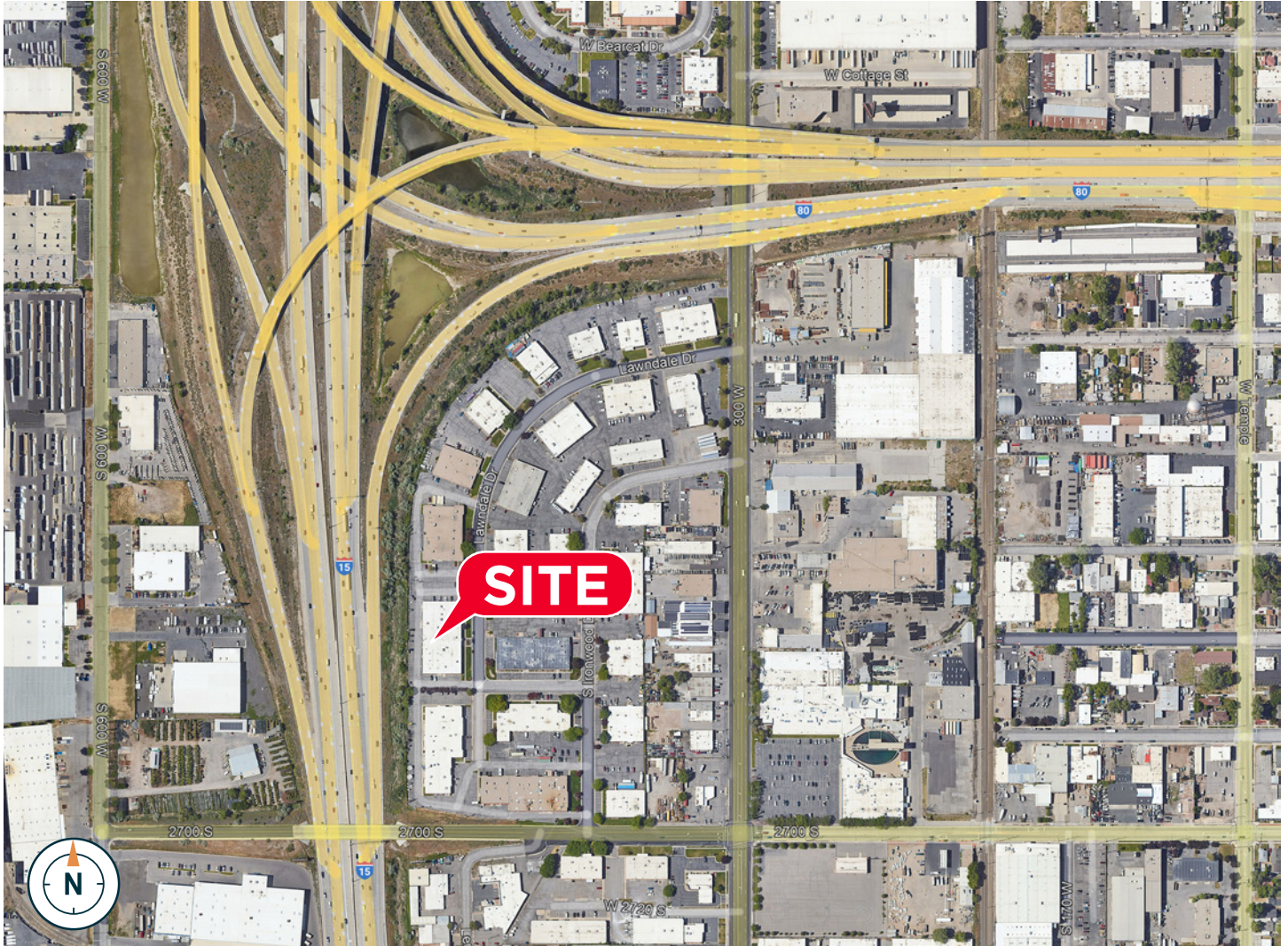


**CUSHMAN &  
WAKEFIELD**

FOR SUBLEASE

# OfficeWarehouse with Showroom

460 West Lawndale Drive, Salt Lake City, UT



**Kyle McMullin**  
Senior Director  
+1 801 303 5480  
kyle.mcmullin@cushwake.com

**Paul Westenskow**  
Senior Director  
+1 801 303 5557  
paul.westenskow@cushwake.com

170 South Main Street, Suite 1600  
Salt Lake City, UT 84101  
Main +1 801 322 2000  
**cushmanwakefield.com**