

HUGHES AIRPORT CENTER



FOR LEASE
OFFICE & INDUSTRIAL

750, 815, 823 & 839 PILOT RD | LAS VEGAS | NV | 89119

FOR MORE INFORMATION:

JAKE HIGGINS, SIOR
702.369.4844
jake.higgins@cbre.com
Lic. #S.0176473

KELSEY HIGGINS
702.369.4812
kelsey.higgins@cbre.com
Lic. #S.0192524

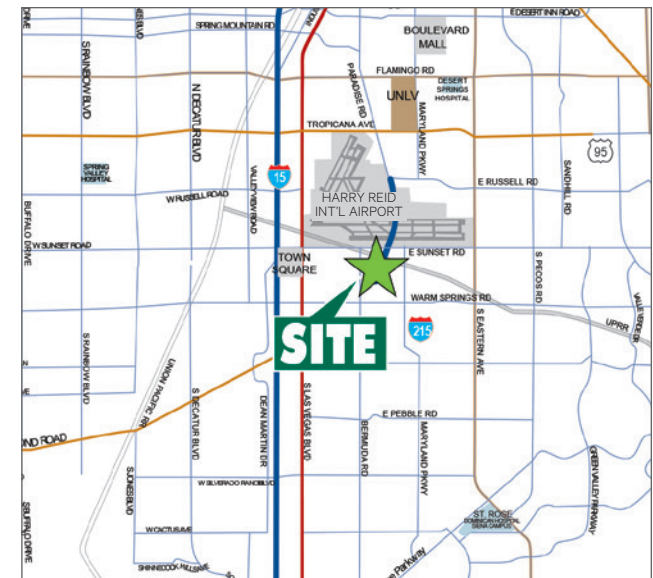
CBRE INC.
8548 Rozita Lee Ave, Suite 200
Las Vegas, NV 89113
www.cbre.com

CBRE



PROPERTY FEATURES

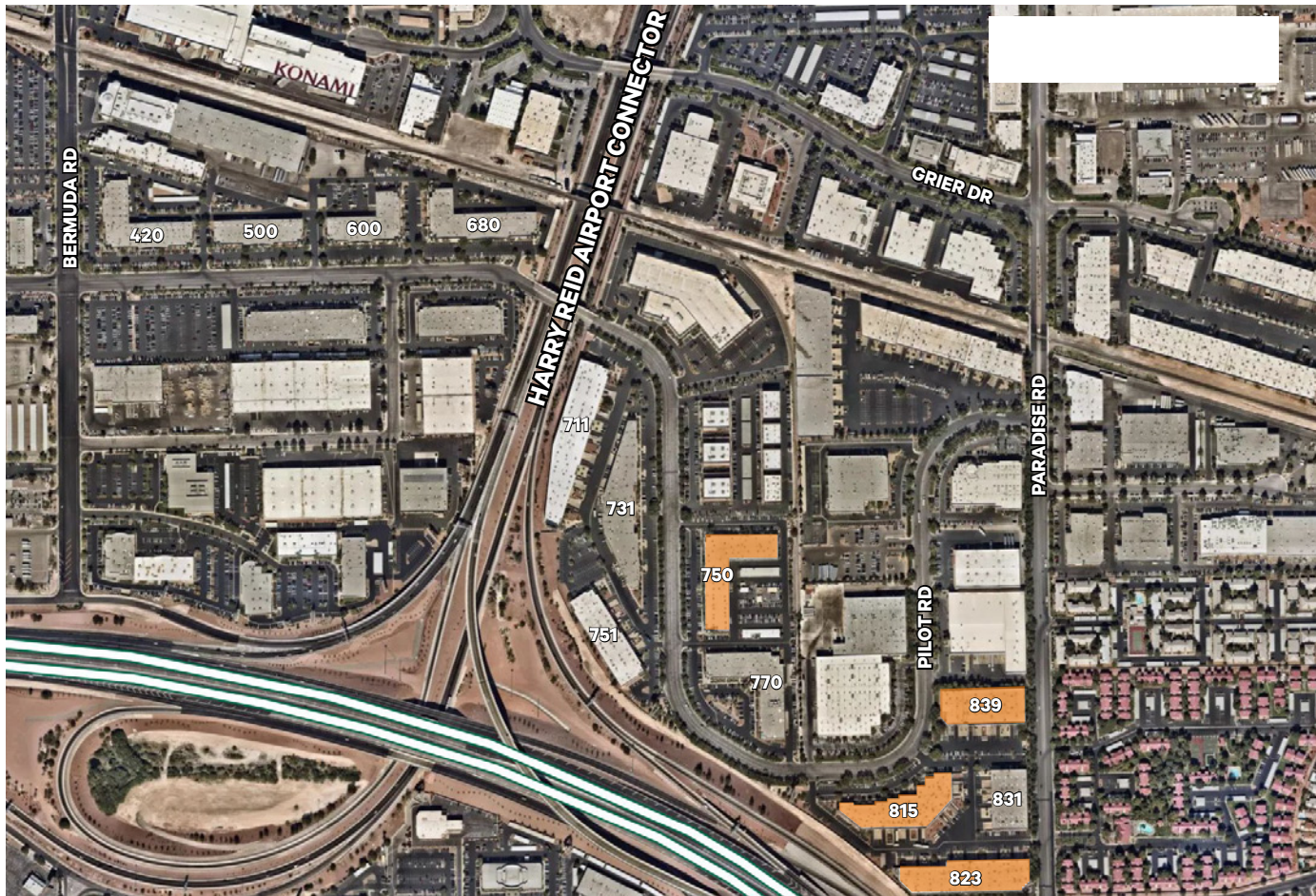
- Premier business park in Las Vegas
- 671,000 square feet
- Office, flex and industrial space
- In close proximity to the Las Vegas Strip, Harry Reid International Airport, Town Square and numerous other amenities
- Convenient access to I-15 and 215 freeways
- Contact broker for tour information



The information contained herein is believed to be accurate but is not warranted as to its accuracy and may change or be updated without notice. Seller or landlord makes no representation as to the environmental condition of the property and recommends purchaser's or tenant's independent investigation.

HUGHES AIRPORT CENTER

SITE PLAN



FOR MORE INFORMATION

JAKE HIGGINS, SIOR
 702.369.4844
 jake.higgins@cbre.com
 Lic. #S.0176473

KELSEY HIGGINS
 702.369.4812
 kelsey.higgins@cbre.com
 Lic. #S.0192524

CBRE INC.
 8548 Rozita Lee Ave, Suite 200
 Las Vegas, NV 89113
 www.cbre.com

AVAILABILITIES

AVAILABLE

BLDG	SUITE	TOTAL SF	OFFICE SF	CLEAR HEIGHT	DOCK HIGH	GRADE DOORS	LEASE RATE PSF	CAM
750	G	14,843	3,487	20'	-	2	Call for Pricing	\$0.35
815	E	5,727	3,346	26'	1	1	Call for Pricing	\$0.35
815	F	5,478**	TBD	TBD	1*	1*	Call for Pricing	\$0.35
823	E	13,156	694	26'	1	1	Call For Pricing	\$0.35
839	B	11,729	825	20'	2	1	Call for Pricing	\$0.35
839	C	24,352	1,994	23.5'	4	2	Call for Pricing	\$0.35

*Potential to add doors.

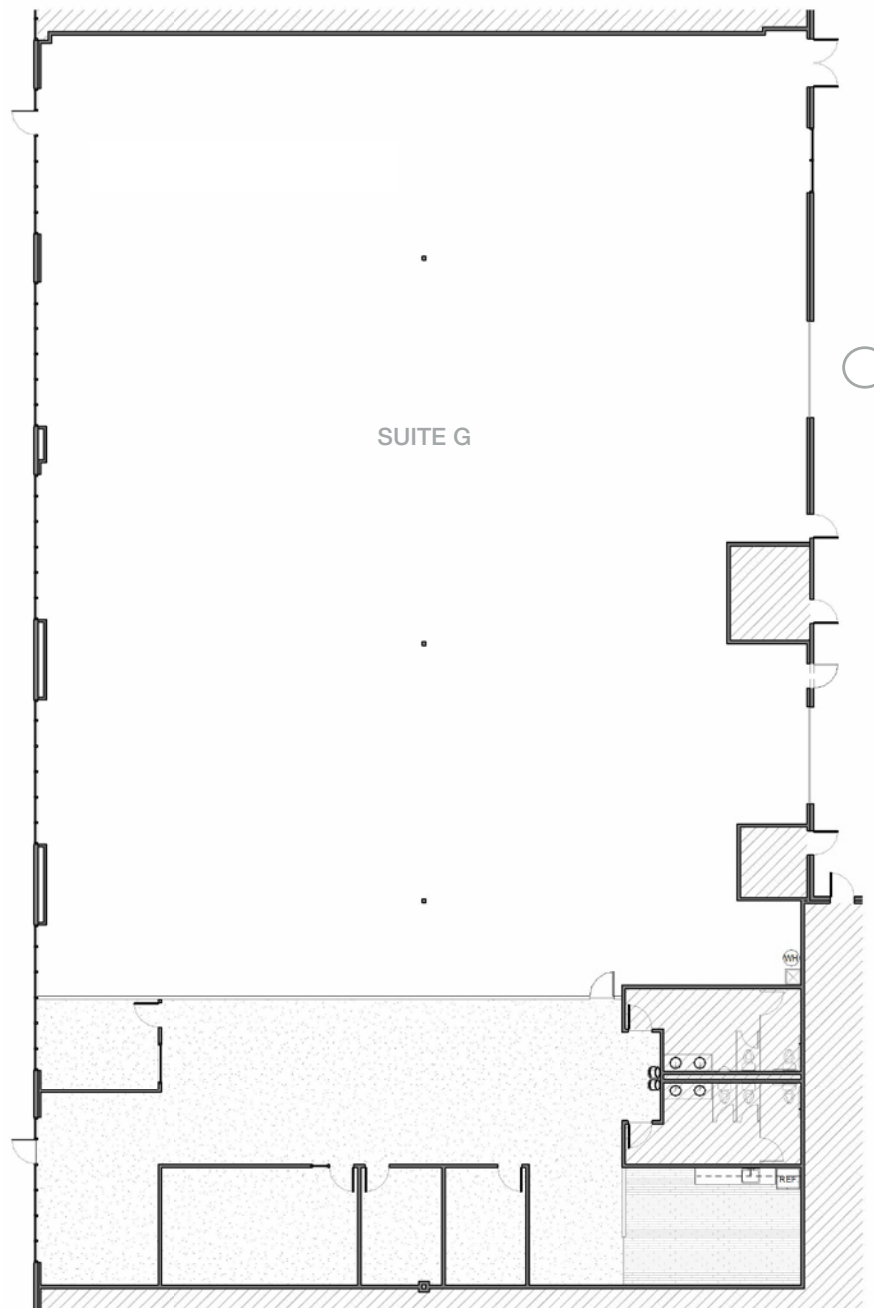
**To be determined by landlord.

HUGHES AIRPORT CENTER
 LAS VEGAS, NV 89119



HUGHES AIRPORT CENTER

SITE PLAN



FEATURES

- ±14,843 SF Total
- ±3,487 SF Office
- ±11,356 SF Warehouse
- Clear Height: 20'
- Grade Doors: 2
- Full HVAC

Available Now

Lease Rate: Call for Pricing

CAM: \$0.35

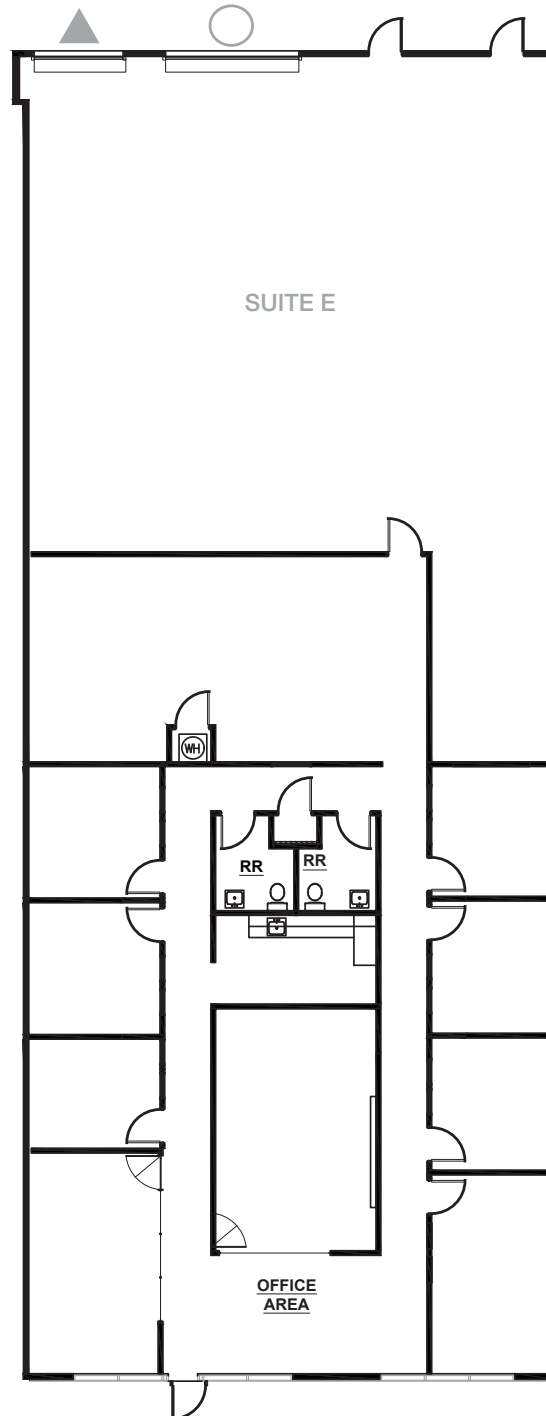
HUGHES AIRPORT CENTER
LAS VEGAS, NV 89119

CBRE

HUGHES AIRPORT CENTER

SITE PLAN

*LAYOUT IS TENTATIVE



▲ DOCK DOOR

○ GRADE DOOR

*Floor plan not to scale.



FEATURES

±5,727 SF Total

±3,346 SF Office

±2,381 SF Warehouse

Clear Height: 26'

Dock Door: 1

Grade Door: 1

Full HVAC

Available Q3 2026

Lease Rate: Call for Pricing

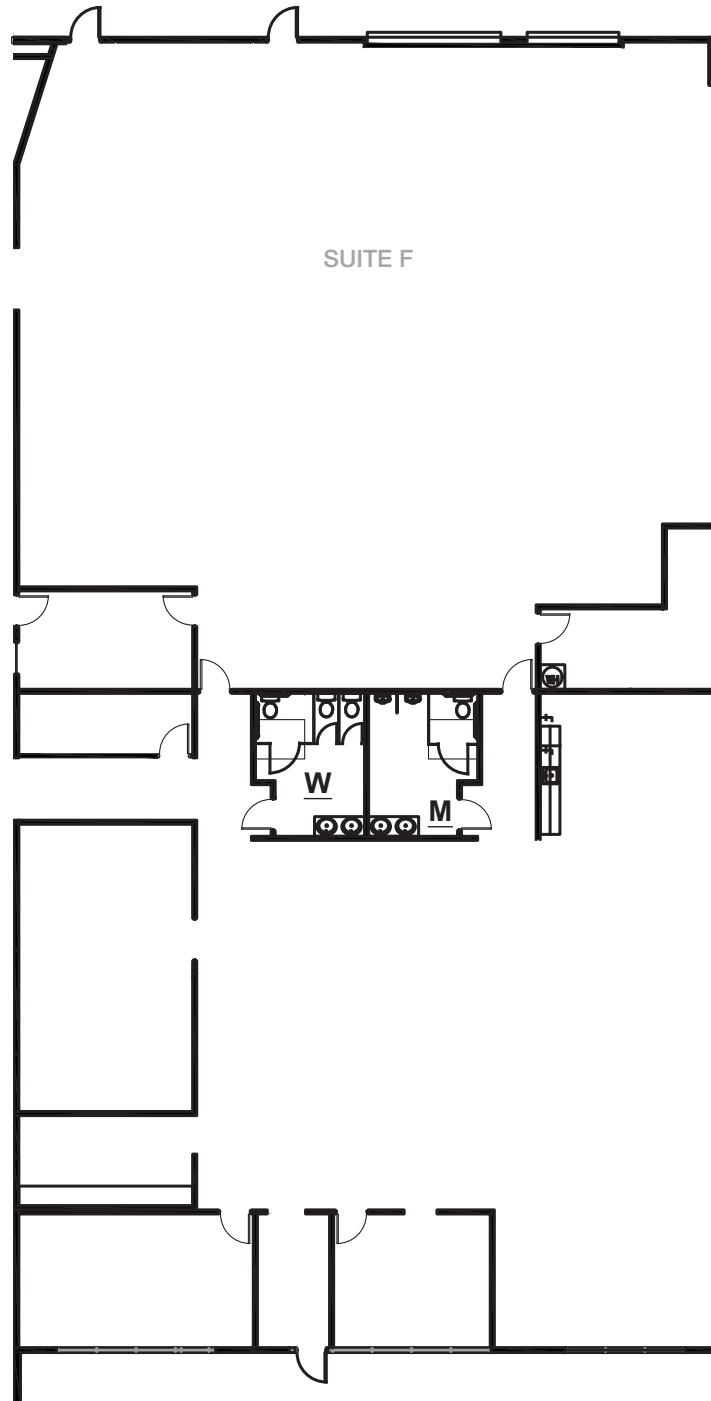
CAM: \$0.35

HUGHES AIRPORT CENTER
LAS VEGAS, NV 89119

CBRE

HUGHES AIRPORT CENTER

SITE PLAN



▲ DOCK DOOR

○ GRADE DOOR

*Floor plan not to scale.

FEATURES

±5,478 SF Total*

TBD SF Office

TBD SF Warehouse

Clear Height: TBD

Potential Dock Door: 1

Potential Grade Door: 1

Full HVAC

Available Q3 2026

Lease Rate: Call for Pricing

CAM: \$0.35

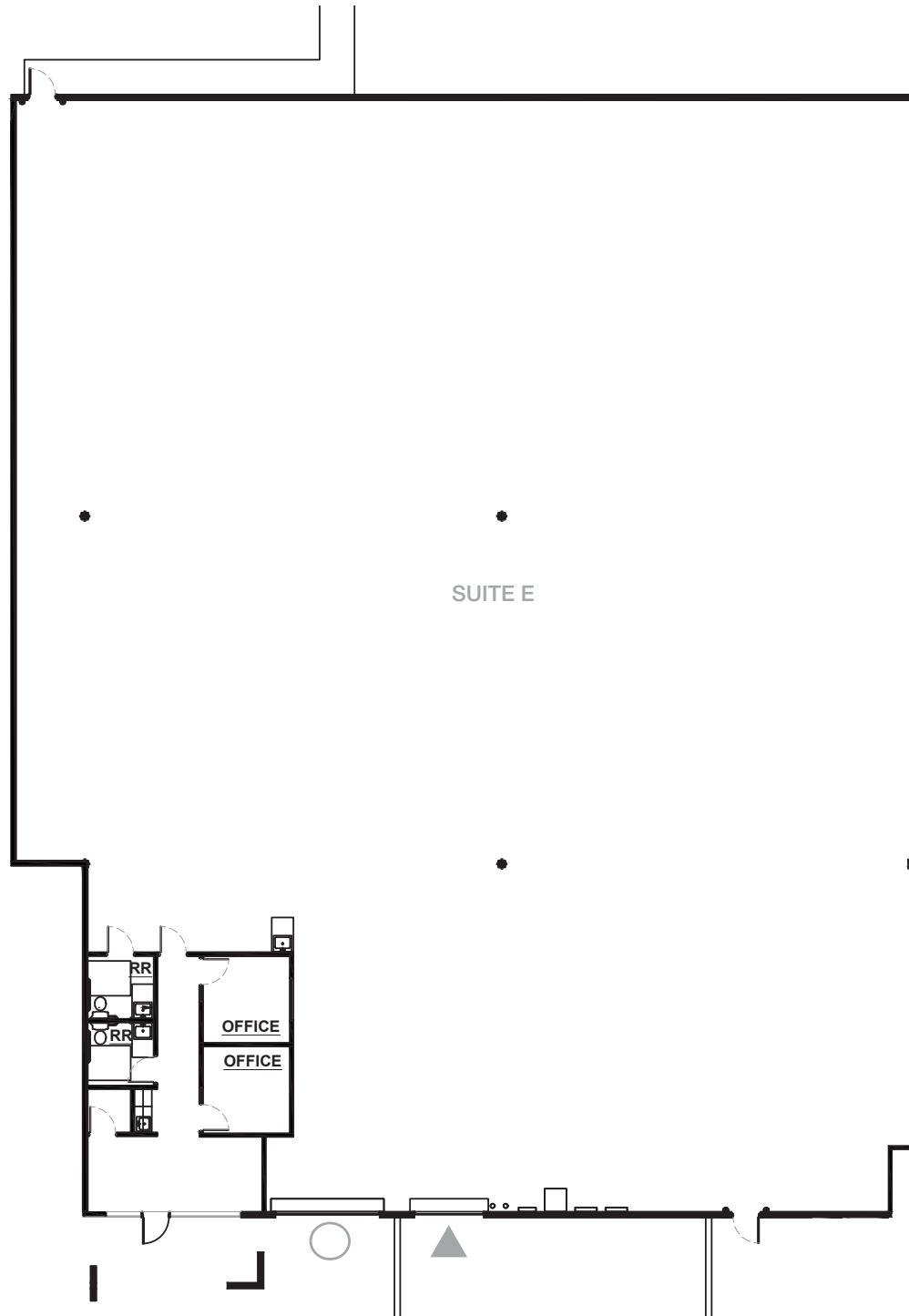
*To be determined by landlord.

HUGHES AIRPORT CENTER
LAS VEGAS, NV 89119

CBRE

HUGHES AIRPORT CENTER

SITE PLAN



▲ DOCK DOOR

○ GRADE DOOR

*Floor plan not to scale.

FEATURES

±13,156 SF Total

±694 SF Office

±12,462 SF Warehouse

Clear Height: 26'

Grade Door: 1

Dock Door: 1

Heavy Power in suite

Available Now

Lease Rate: Call for Pricing

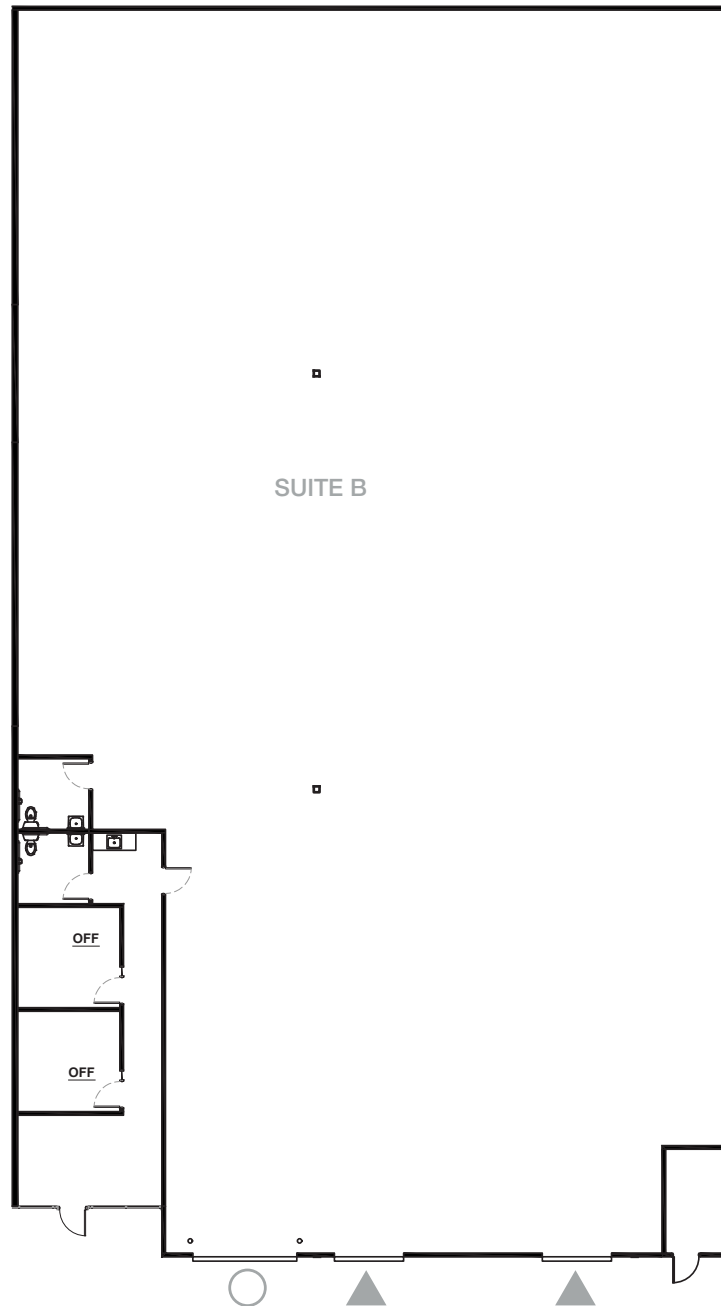
CAM: \$0.35

HUGHES AIRPORT CENTER
LAS VEGAS, NV 89119

CBRE

HUGHES AIRPORT CENTER

SITE PLAN



FEATURES

±11,729 SF Total

±825 SF Office

±10,904 SF Warehouse

Clear Height: 20'

Grade Doors: 1

Dock Doors: 2

Available Now

Lease Rate: Call for Pricing

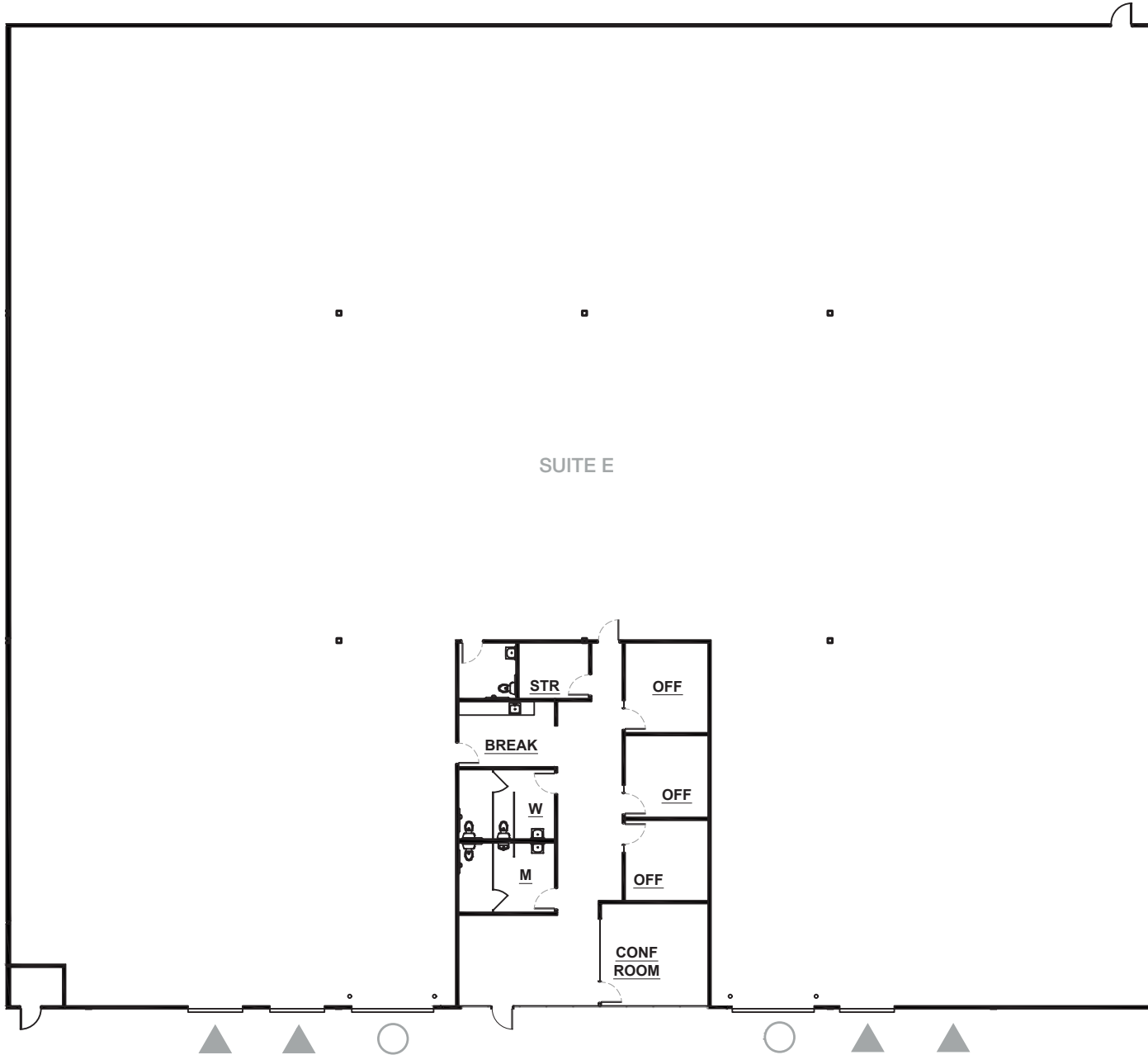
CAM: \$0.35

HUGHES AIRPORT CENTER
LAS VEGAS, NV 89119

CBRE

HUGHES AIRPORT CENTER

SITE PLAN



SUITE C

±24,352 SF Total

±1,994 SF Office

±22,358 SF Warehouse

Clear Height: 23.5'

Grade Doors: 2

Dock Doors: 4

Available Now

Lease Rate: Call for Pricing

CAM: \$0.35

HUGHES AIRPORT CENTER
LAS VEGAS, NV 89119

CBRE

HUGHES AIRPORT CENTER

AMENITIES & IMPROVEMENTS



HARRY REID INTERNATIONAL AIRPORT

FOR MORE INFORMATION

JAKE HIGGINS, SIOR
702.369.4844
jake.higgins@cbre.com
Lic. #S.0176473

KELSEY HIGGINS
702.369.4812
kelsey.higgins@cbre.com
Lic. #S.0192524

CBRE INC.
8548 Rozita Lee Ave, Suite 200
Las Vegas, NV 89113
www.cbre.com

HUGHES AIRPORT CENTER
LAS VEGAS, NV 89119



NEARBY AMENITIES

HUGHES AIRPORT CENTER



FOR MORE INFORMATION

JAKE HIGGINS, SIOR
702.369.4844
jake.higgins@cbre.com
Lic. #S.0176473

KELSEY HIGGINS
702.369.4812
kelsey.higgins@cbre.com
Lic. #S.0192524

CBRE INC.
8548 Rozita Lee Ave, Suite 200
Las Vegas, NV 89113
www.cbre.com

HUGHES AIRPORT CENTER
LAS VEGAS, NV 89119

CBRE