

1,582 - 3,705 SF



FOR LEASE



Restaurant and Retail Spaces Available

Green Street Center

28662 Marguerite Parkway
Mission Viejo, California 92692

Property Highlights

- New Construction Retail Center
- 1,770 SF Space w/ 452 SF Private Outdoor Patio
- 1,582 SF & 1,646 SF Fully Built Out Restaurants
- 1,591 SF to 3,705 SF Shop Spaces
- High Traffic Corner of Avery Pkwy & Marguerite Pkwy
- Common Outdoor Courtyard Area
- Monument Signage Available
- Close Proximity to 5 & 73 Freeways
- Minutes from Saddleback Collage & Capistrano Valley High School
- Take Advantage of the Fully Built Out Restaurant Spaces Now Available

DEMOGRAPHICS	1 MILE	3 MILES	5 MILES
Total Households	3,478	39,181	103,969
Total Population	10,051	110,979	283,836
Average HH Income	\$93,767	\$131,444	\$122,008

SPACES	LEASE RATE	SPACE SIZE
101-102	\$3.95 SF/month	3,705 SF
200	\$3.95 SF/month	1,770 SF
201 (Former Restaurant)	\$3.95 SF/month	1,582 SF
202 (Former Restaurant)	\$3.95 SF/month	1,646 SF
203	\$3.95 SF/month	1,591 SF



COMMERCIAL REAL ESTATE SERVICES, WORLDWIDE

www.naicapital.com

Steve Liu

Executive Vice President | C: 714.349.3547
sliu@naicapital.com | CalDRE #01323150

Nikki Liu

Senior Associate | C: 818.744.3398
nliu@naicapital.com | CalDRE #02038755

Mohit Uppal

Associate | C: 760.518.8429
muppal@naicapital.com | CalDRE #02053595

NO WARRANTY, EXPRESS OR IMPLIED, IS MADE AS TO THE ACCURACY OF THE INFORMATION CONTAINED HEREIN. THIS INFORMATION IS SUBMITTED SUBJECT TO ERRORS, OMISSIONS, CHANGE OF PRICE, RENTAL OR OTHER CONDITIONS, WITHDRAWAL WITHOUT NOTICE, AND IS SUBJECT TO ANY SPECIAL LISTING CONDITIONS IMPOSED BY OUR PRINCIPALS, COOPERATING BROKERS, BUYERS, TENANTS AND OTHER PARTIES WHO RECEIVE THIS DOCUMENT SHOULD NOT RELY ON IT, BUT SHOULD USE IT AS A STARTING POINT OF ANALYSIS, AND SHOULD INDEPENDENTLY CONFIRM THE ACCURACY OF THE INFORMATION CONTAINED HEREIN THROUGH A DUE DILIGENCE REVIEW OF THE BOOKS, RECORDS, FILES AND DOCUMENTS THAT CONSTITUTE RELIABLE SOURCES OF THE INFORMATION DESCRIBED HEREIN. LOGOS ARE FOR IDENTIFICATION PURPOSES ONLY AND MAY BE TRADEMARKS OF THEIR RESPECTIVE COMPANIES. NAI CAPITAL, INC. CA BRE LIC. #01990696.

1,582 - 3,705 SF



FOR LEASE



COMMERCIAL REAL ESTATE SERVICES, WORLDWIDE

www.naicapital.com

Steve Liu

Executive Vice President | C: 714.349.3547
sliu@naicapital.com | CalDRE #01323150

Nikki Liu

Senior Associate | C: 818.744.3398
nliu@naicapital.com | CalDRE #02038755

Mohit Uppal

Associate | C: 760.518.8429
muppal@naicapital.com | CalDRE #02053595

NO WARRANTY, EXPRESS OR IMPLIED, IS MADE AS TO THE ACCURACY OF THE INFORMATION CONTAINED HEREIN. THIS INFORMATION IS SUBMITTED SUBJECT TO ERRORS, OMISSIONS, CHANGE OF PRICE, RENTAL OR OTHER CONDITIONS, WITHDRAWAL WITHOUT NOTICE, AND IS SUBJECT TO ANY SPECIAL LISTING CONDITIONS IMPOSED BY OUR PRINCIPALS. COOPERATING BROKERS, BUYERS, TENANTS AND OTHER PARTIES WHO RECEIVE THIS DOCUMENT SHOULD NOT RELY ON IT, BUT SHOULD USE IT AS A STARTING POINT OF ANALYSIS, AND SHOULD INDEPENDENTLY CONFIRM THE ACCURACY OF THE INFORMATION CONTAINED HEREIN THROUGH A DUE DILIGENCE REVIEW OF THE BOOKS, RECORDS, FILES AND DOCUMENTS THAT CONSTITUTE RELIABLE SOURCES OF THE INFORMATION DESCRIBED HEREIN. LOGOS ARE FOR IDENTIFICATION PURPOSES ONLY AND MAY BE TRADEMARKS OF THEIR RESPECTIVE COMPANIES. NAI CAPITAL, INC. CA BRE LIC. #01990696.

1,582 - 3,705 SF



FOR LEASE



COMMERCIAL REAL ESTATE SERVICES, WORLDWIDE

www.naicapital.com

Steve Liu

Executive Vice President | C: 714.349.3547
sliu@naicapital.com | CalDRE #01323150

Nikki Liu

Senior Associate | C: 818.744.3398
nliu@naicapital.com | CalDRE #02038755

Mohit Uppal

Associate | C: 760.518.8429
muppal@naicapital.com | CalDRE #02053595

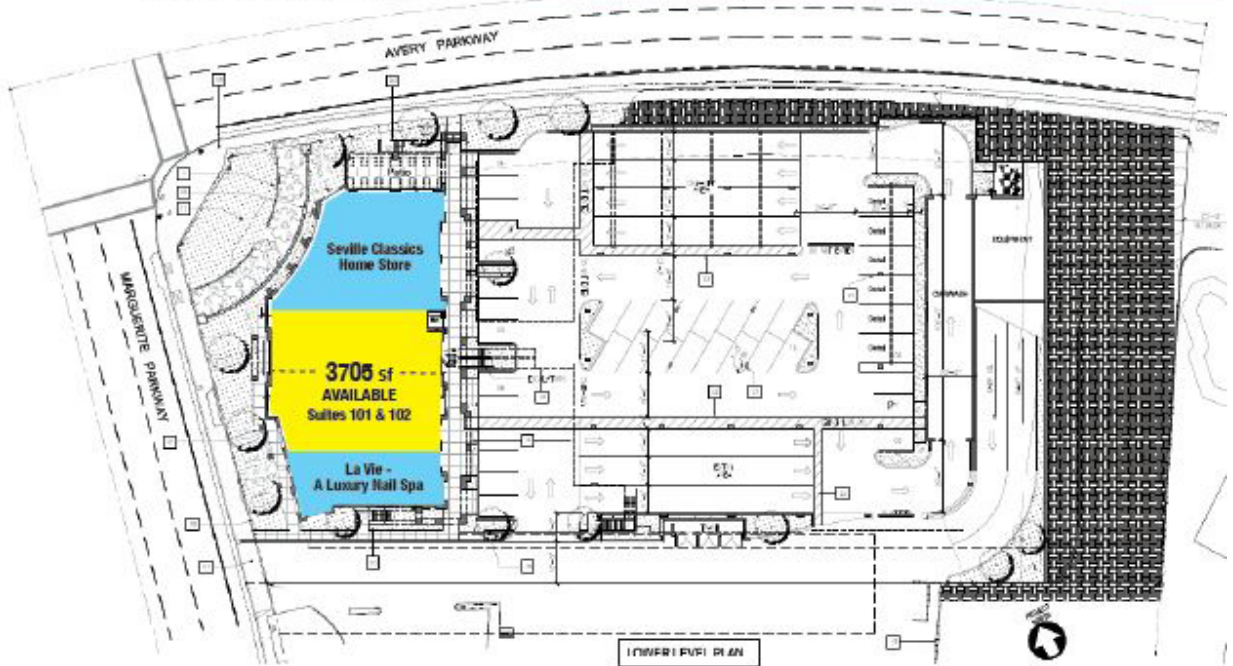
NO WARRANTY, EXPRESS OR IMPLIED, IS MADE AS TO THE ACCURACY OF THE INFORMATION CONTAINED HEREIN. THIS INFORMATION IS SUBMITTED SUBJECT TO ERRORS, OMISSIONS, CHANGE OF PRICE, RENTAL OR OTHER CONDITIONS, WITHDRAWAL WITHOUT NOTICE, AND IS SUBJECT TO ANY SPECIAL LISTING CONDITIONS IMPOSED BY OUR PRINCIPALS, COOPERATING BROKERS, BUYERS, TENANTS AND OTHER PARTIES WHO RECEIVE THIS DOCUMENT SHOULD NOT RELY ON IT, BUT SHOULD USE IT AS A STARTING POINT OF ANALYSIS, AND SHOULD INDEPENDENTLY CONFIRM THE ACCURACY OF THE INFORMATION CONTAINED HEREIN THROUGH A DUE DILIGENCE REVIEW OF THE BOOKS, RECORDS, FILES AND DOCUMENTS THAT CONSTITUTE RELIABLE SOURCES OF THE INFORMATION DESCRIBED HEREIN. LOGOS ARE FOR IDENTIFICATION PURPOSES ONLY AND MAY BE TRADEMARKS OF THEIR RESPECTIVE COMPANIES. NAI CAPITAL, INC. CA BRE LIC. #01990696.

1,582 - 3,705 SF

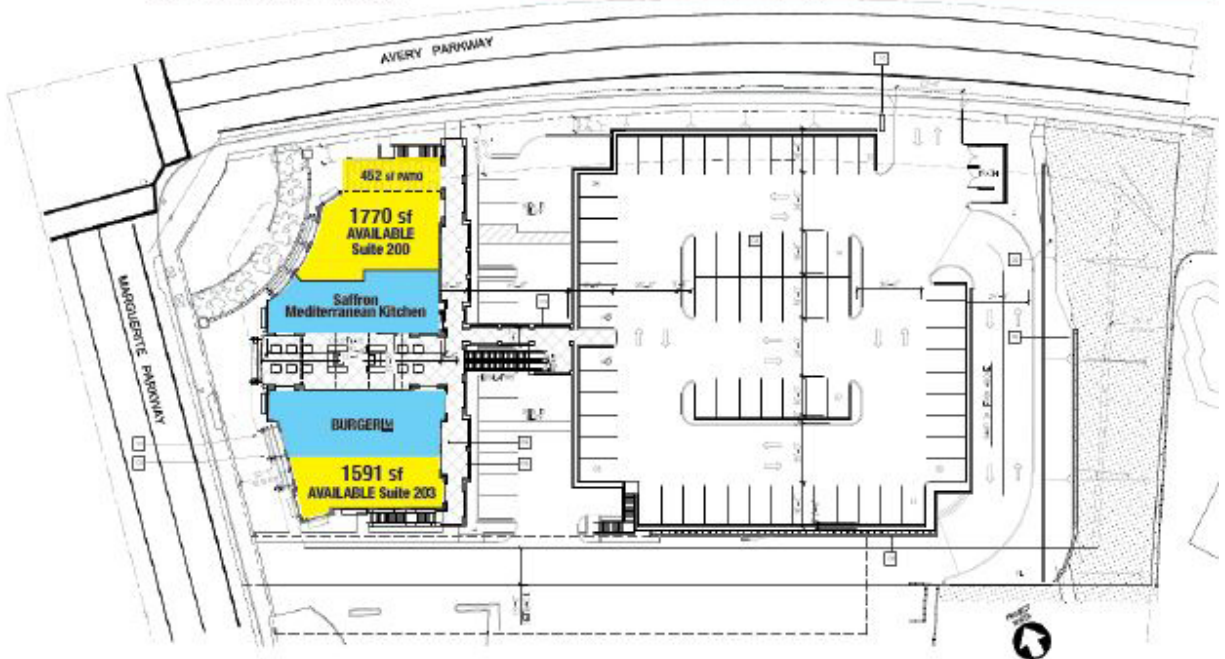
FOR LEASE



LOWER LEVEL PLAN



UPPER LEVEL PLAN



- Confirmed tenants
- Available for lease



COMMERCIAL REAL ESTATE SERVICES, WORLDWIDE

www.naicapital.com

Steve Liu

Executive Vice President | C: 714.349.3547
sliu@naicapital.com | CalDRE #01323150

Nikki Liu

Senior Associate | C: 818.744.3398
nliu@naicapital.com | CalDRE #02038755

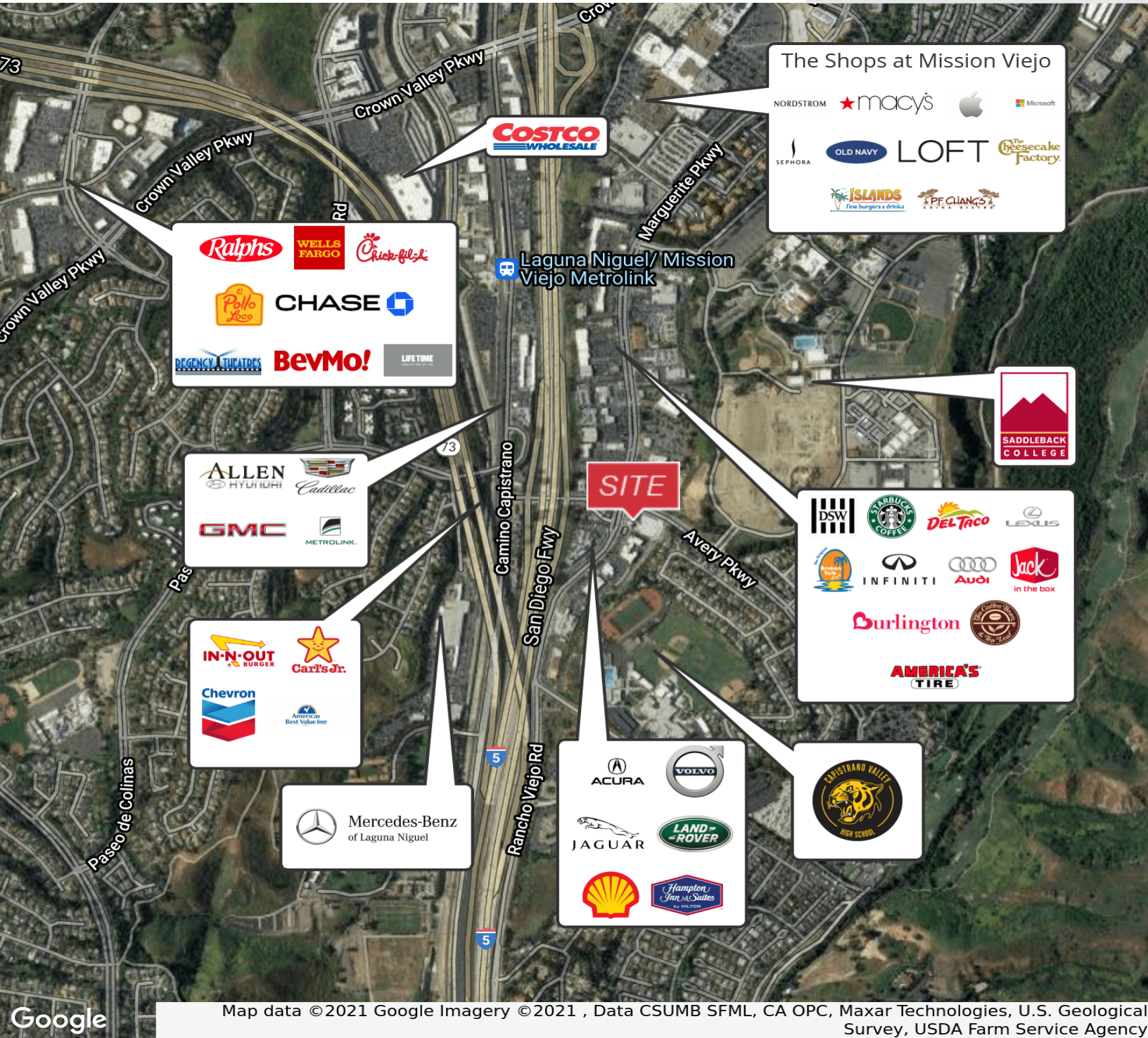
Mohit Uppal

Associate | C: 760.518.8429
muppal@naicapital.com | CalDRE #02053595

NO WARRANTY, EXPRESS OR IMPLIED, IS MADE AS TO THE ACCURACY OF THE INFORMATION CONTAINED HEREIN. THIS INFORMATION IS SUBMITTED SUBJECT TO ERRORS, OMISSIONS, CHANGE OF PRICE, RENTAL OR OTHER CONDITIONS, WITHDRAWAL WITHOUT NOTICE, AND IS SUBJECT TO ANY SPECIAL LISTING CONDITIONS IMPOSED BY OUR PRINCIPALS. COOPERATING BROKERS, BUYERS, TENANTS AND OTHER PARTIES WHO RECEIVE THIS DOCUMENT SHOULD NOT RELY ON IT, BUT SHOULD USE IT AS A STARTING POINT OF ANALYSIS, AND SHOULD INDEPENDENTLY CONFIRM THE ACCURACY OF THE INFORMATION CONTAINED HEREIN THROUGH A DUE DILIGENCE REVIEW OF THE BOOKS, RECORDS, FILES AND DOCUMENTS THAT CONSTITUTE RELIABLE SOURCES OF THE INFORMATION DESCRIBED HEREIN. LOGOS ARE FOR IDENTIFICATION PURPOSES ONLY AND MAY BE TRADEMARKS OF THEIR RESPECTIVE COMPANIES. NAI CAPITAL, INC. CA BRE LIC. #01990996.

1,582 - 3,705 SF

FOR LEASE



Map data ©2021 Google Imagery ©2021, Data CSUMB SFML, CA OPC, Maxar Technologies, U.S. Geological Survey, USDA Farm Service Agency



COMMERCIAL REAL ESTATE SERVICES, WORLDWIDE

www.naicapital.com

Steve Liu

Executive Vice President | C: 714.349.3547
sliu@naicapital.com | CalDRE #01323150

Nikki Liu

Senior Associate | C: 818.744.3398
nliu@naicapital.com | CalDRE #02038755

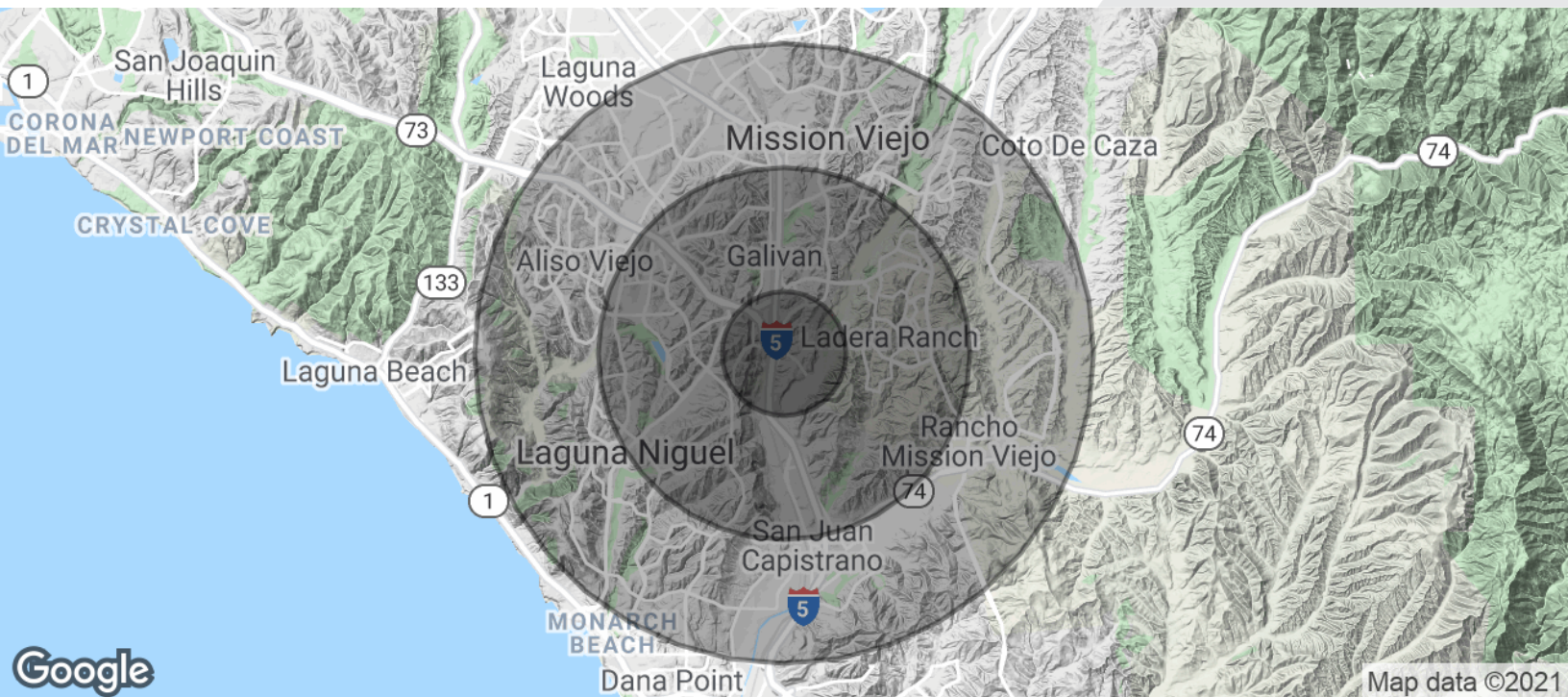
Mohit Uppal

Associate | C: 760.518.8429
muppal@naicapital.com | CalDRE #02053595

NO WARRANTY, EXPRESS OR IMPLIED, IS MADE AS TO THE ACCURACY OF THE INFORMATION CONTAINED HEREIN. THIS INFORMATION IS SUBMITTED SUBJECT TO ERRORS, OMISSIONS, CHANGE OF PRICE, RENTAL OR OTHER CONDITIONS, WITHDRAWAL WITHOUT NOTICE, AND IS SUBJECT TO ANY SPECIAL LISTING CONDITIONS IMPOSED BY OUR PRINCIPALS, COOPERATING BROKERS, BUYERS, TENANTS AND OTHER PARTIES WHO RECEIVE THIS DOCUMENT SHOULD NOT RELY ON IT, BUT SHOULD USE IT AS A STARTING POINT OF ANALYSIS, AND SHOULD INDEPENDENTLY CONFIRM THE ACCURACY OF THE INFORMATION CONTAINED HEREIN THROUGH A DUE DILIGENCE REVIEW OF THE BOOKS, RECORDS, FILES AND DOCUMENTS THAT CONSTITUTE RELIABLE SOURCES OF THE INFORMATION DESCRIBED HEREIN. LOGOS ARE FOR IDENTIFICATION PURPOSES ONLY AND MAY BE TRADEMARKS OF THEIR RESPECTIVE COMPANIES. NAI CAPITAL, INC. A BRE LIC. #01990696.

1,582 - 3,705 SF

FOR LEASE



POPULATION

	1 MILE	3 MILES	5 MILES
Total Population	10,051	110,979	283,836
Average age	34.5	38.4	40.2
Average age (Male)	32.7	36.8	38.7
Average age (Female)	35.5	39.5	41.5

HOUSEHOLDS & INCOME

	1 MILE	3 MILES	5 MILES
Total households	3,478	39,181	103,969
# of persons per HH	2.9	2.8	2.7
Average HH income	\$93,767	\$131,444	\$122,008
Average house value	\$615,109	\$719,892	\$686,546

* Demographic data derived from 2010 US Census



COMMERCIAL REAL ESTATE SERVICES, WORLDWIDE

www.naicapital.com

Steve Liu

Executive Vice President | C: 714.349.3547
sliu@naicapital.com | CalDRE #01323150

Nikki Liu

Senior Associate | C: 818.744.3398
nliu@naicapital.com | CalDRE #02038755

Mohit Uppal

Associate | C: 760.518.8429
muppal@naicapital.com | CalDRE #02053595

NO WARRANTY, EXPRESS OR IMPLIED, IS MADE AS TO THE ACCURACY OF THE INFORMATION CONTAINED HEREIN. THIS INFORMATION IS SUBMITTED SUBJECT TO ERRORS, OMISSIONS, CHANGE OF PRICE, RENTAL OR OTHER CONDITIONS, WITHDRAWAL WITHOUT NOTICE, AND IS SUBJECT TO ANY SPECIAL LISTING CONDITIONS IMPOSED BY OUR PRINCIPALS. COOPERATING BROKERS, BUYERS, TENANTS AND OTHER PARTIES WHO RECEIVE THIS DOCUMENT SHOULD NOT RELY ON IT, BUT SHOULD USE IT AS A STARTING POINT OF ANALYSIS, AND SHOULD INDEPENDENTLY CONFIRM THE ACCURACY OF THE INFORMATION CONTAINED HEREIN THROUGH A DUE DILIGENCE REVIEW OF THE BOOKS, RECORDS, FILES AND DOCUMENTS THAT CONSTITUTE RELIABLE SOURCES OF THE INFORMATION DESCRIBED HEREIN. LOGOS ARE FOR IDENTIFICATION PURPOSES ONLY AND MAY BE TRADEMARKS OF THEIR RESPECTIVE COMPANIES. NAI CAPITAL, INC. CA BRE LIC. #01990696.