

FOR SALE

LAND SITE

2925

E. BROAD STREET

Mansfield, Texas 76063



PROPERTY SPECIFICATIONS

Asking Price

+ \$12.00/SF

Land Size

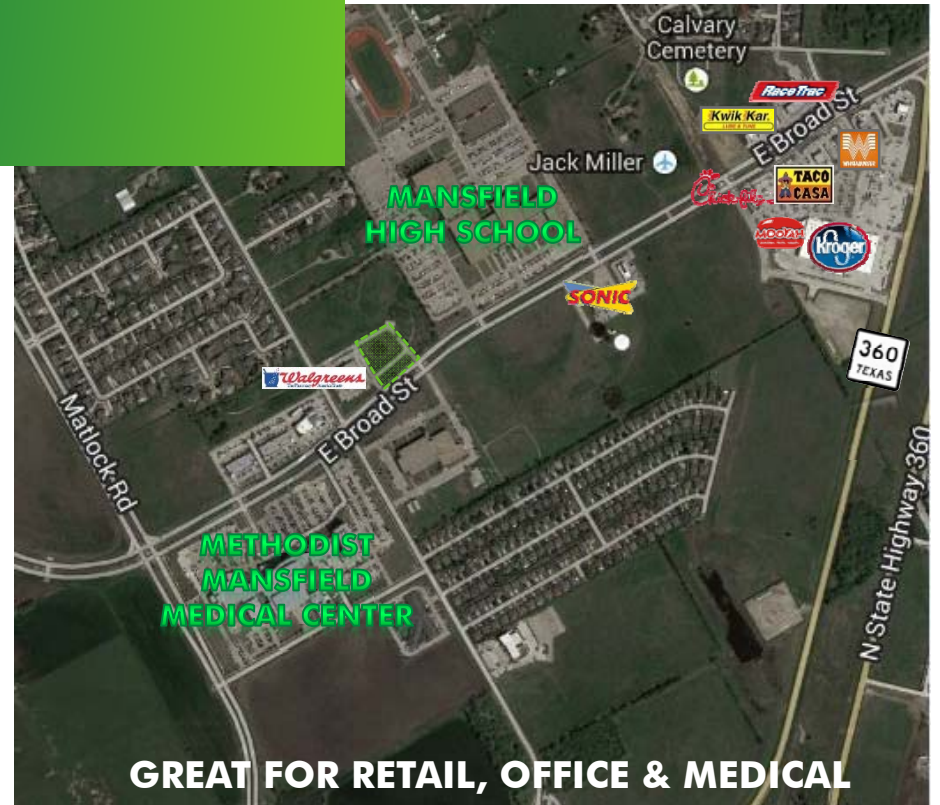
+ 1.59 Acres (69,260.40 SF)

Information

- + Multiple uses – Retail, Office & Medical
- + 40 X 260 Landscaped easement for the piece that fronts Broad Street
- + Located off E. Broad Street & N. Miller Road
- + Commercial Land just right of the Walgreens Building, does include the small parcel directly in front of the property
- + Easy access/visibility to SH-360
- + Zoned "PD" Planned Development: Site Plan District Retail, Office & Medical

Traffic Count

- + Broad St. & Miller Rd. N.: 17,217
- + Broad St. & Matlock Rd. :: 19,413



GREAT FOR RETAIL, OFFICE & MEDICAL

DEMOGRAPHICS	1-Mile	3-Mile	5-Mile
Population Estimate (2013)	4,746	52,526	119,774
Population Growth (2013-2018)	13.25%	13.86%	13.60%
Avg. Household Income (2013)	\$128,472	\$96,262	\$88,173

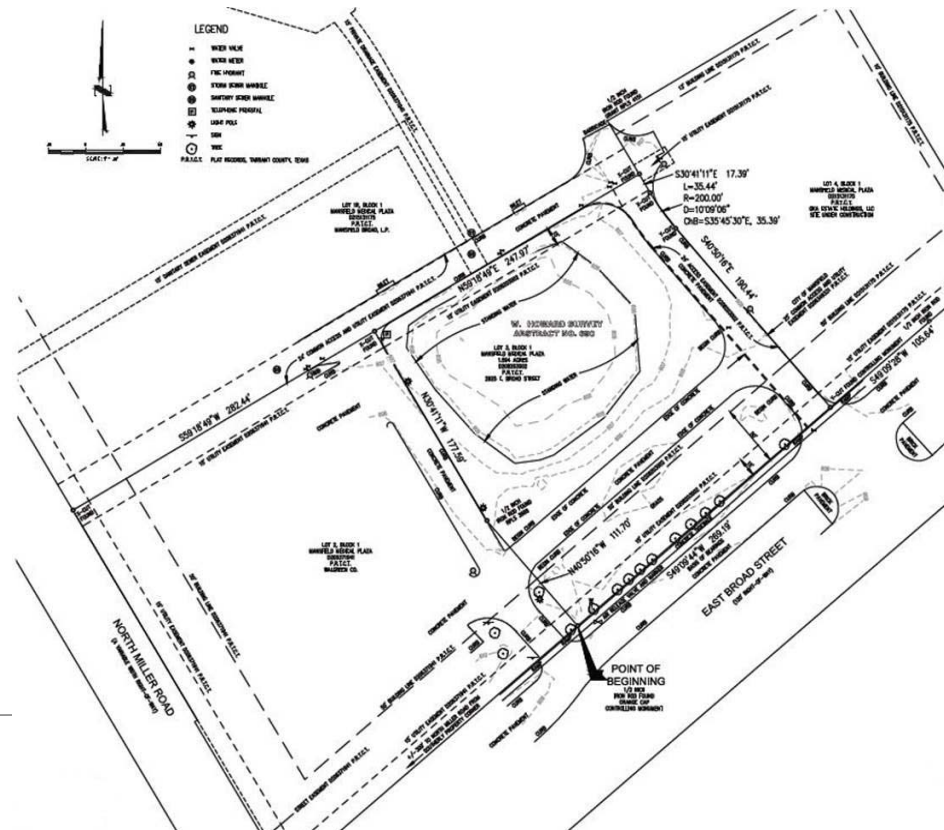
CBRE

FOR SALE LAND SITE

2925
E. BROAD STREET
Mansfield, Texas 76063



PROPERTY SURVEY/LOCATION MAPS



CONTACT US

BLAKE LLOYD

First Vice President

+1 817 333 1112

blake.lloyd@cbre.com

© 2017 CBRE, Inc. The information contained in this document has been obtained from sources believed reliable. While CBRE, Inc. does not doubt its accuracy, CBRE, Inc. has not verified it and makes no guarantee, warranty or representation about it. It is your responsibility to independently confirm its accuracy and completeness. Any projections, opinions, assumptions or estimates used are for example only and do not represent the current or future performance of the property. The value of this transaction to you depends on tax and other factors which should be evaluated by your tax, financial and legal advisors. You and your advisors should conduct a careful, independent investigation of the property to determine to your satisfaction the suitability of the property for your needs.

Photos herein are the property of their respective owners and use of these images without the express written consent of the owner is prohibited.

CBRE