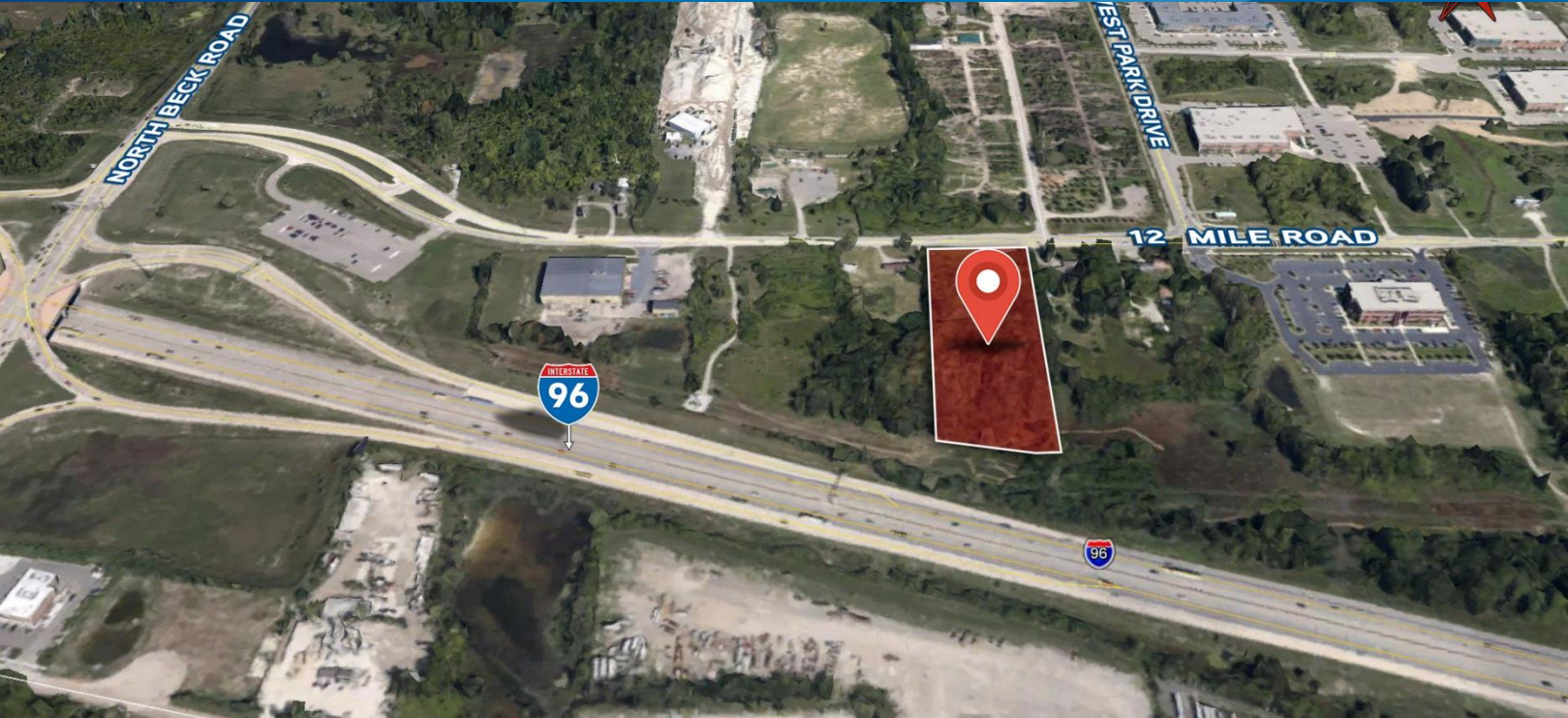


FOR SALE > LAND

4.43 ACRES

W. 12 MILE ROAD | NOVI, MI



OFFICE SERVICE TECHNOLOGY (OST) ZONING

> PROPERTY HIGHLIGHTS

- Excellent Development Opportunity
- Zoning Allows for 3 Story Buildings
- Municipal Sewer and Water
- Close to I-96 Access
- Contiguous Parcel of 5.37 Acres To The East Also Available

COLLIERS INTERNATIONAL
2 Corporate Drive | Suite 300
Southfield, Michigan 48076

For More Information Call:

PAUL GOBEILLE, SIOR

PHONE 248 540 1000 EXT 1684
paul.gobeille@colliers.com



MICHAEL YAMADA, SIOR

PHONE 248 540 1000 EXT 1880
michael.yamada@colliers.com



colliers.com/detroit



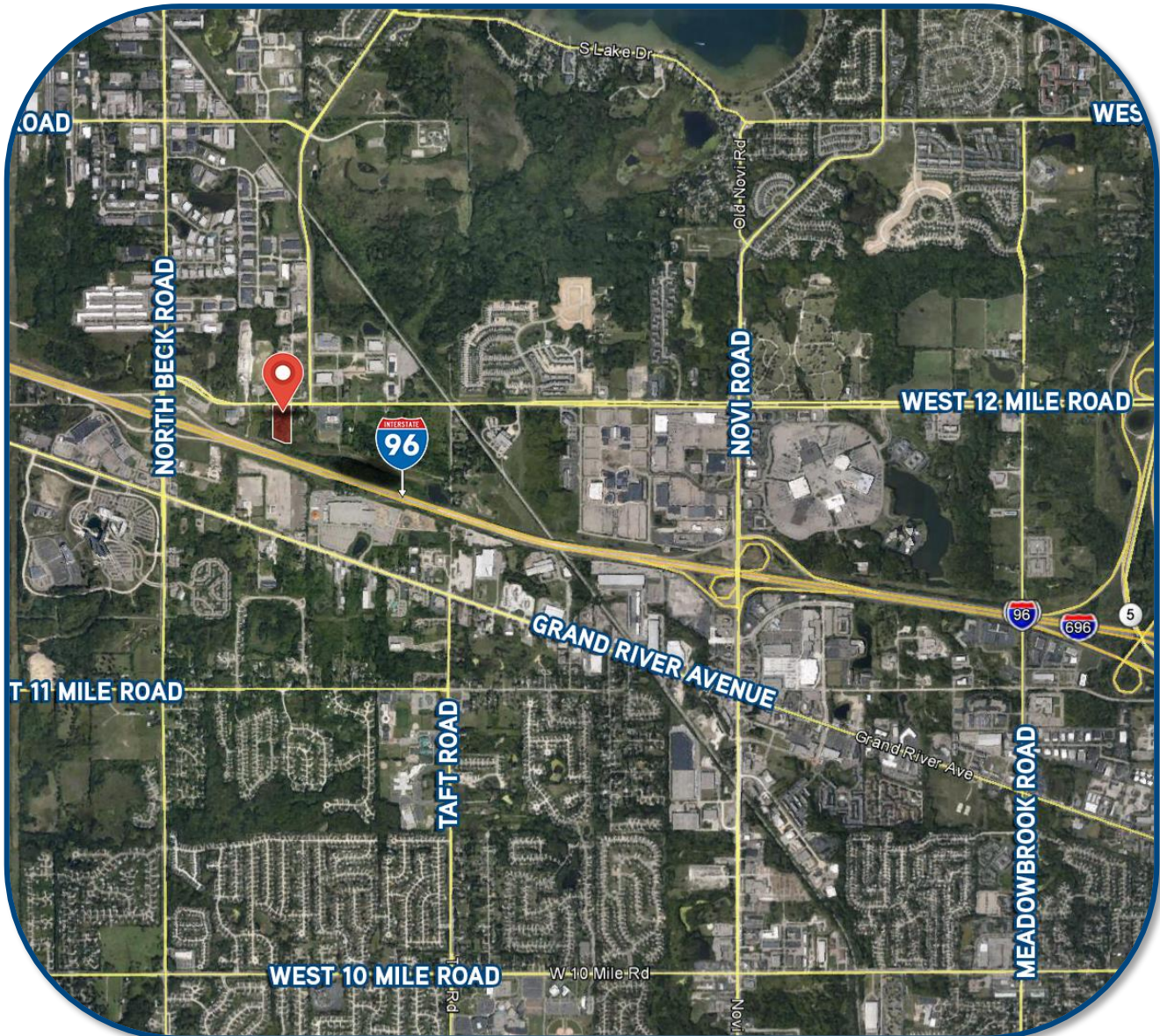
FOR SALE > LAND

4.43 ACRES

W. 12 MILE ROAD | NOVI, MI



> AERIAL MAP



PAUL GOBEILLE, SIOR
PHONE 248 540 1000 EXT 1684
paul.gobeille@colliers.com



MICHAEL YAMADA, SIOR
PHONE 248 540 1000 EXT 1880
michael.yamada@colliers.com

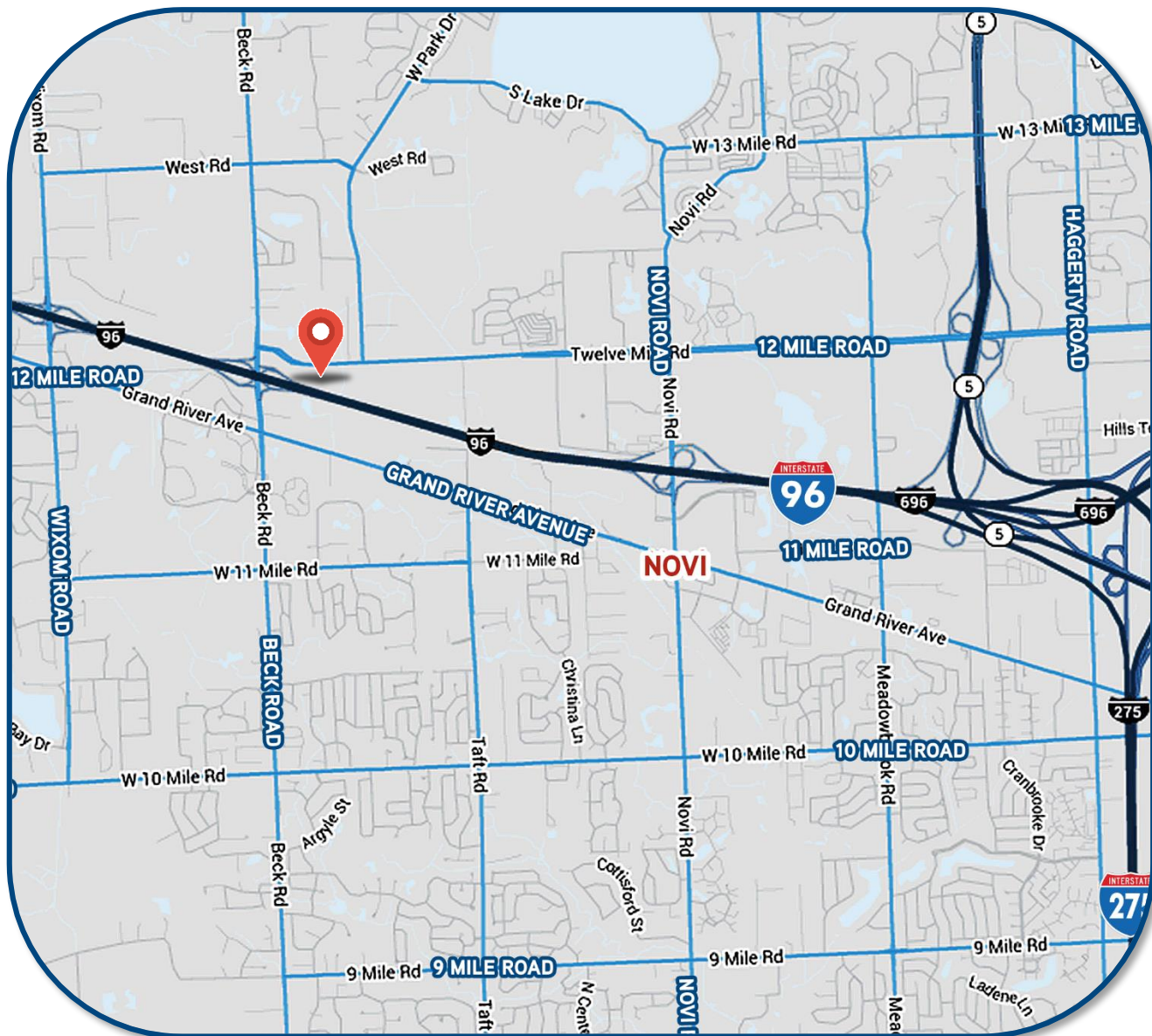
FOR SALE > LAND

4.43 ACRES

W. 12 MILE ROAD | NOVI, MI



> AERIAL MAP



PAUL GOBEILLE, SIOR
PHONE 248 540 1000 EXT 1684
paul.gobeille@colliers.com



MICHAEL YAMADA, SIOR
PHONE 248 540 1000 EXT 1880
michael.yamada@colliers.com

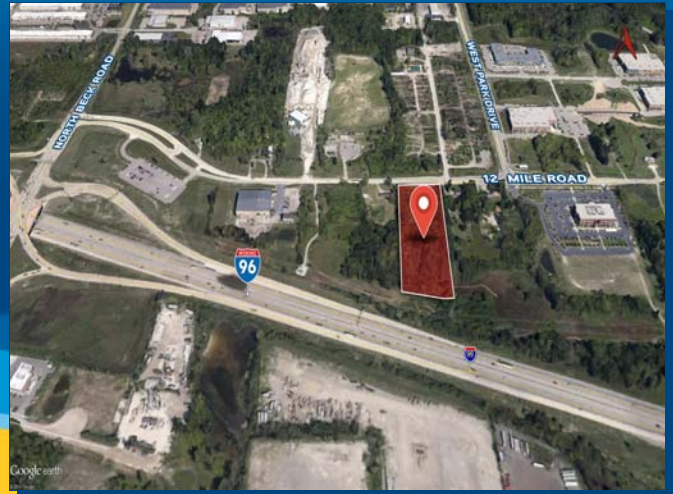
Land Availability

For Sale

4.43 Acres for Sale W. Twelve Mile Road

W. Twelve Mile Road

Novi, MI 48393

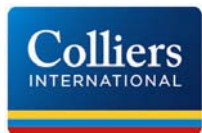


Sale Price: \$750,000 Cash
Sale Price /Acre: \$169,300
Sale Price /SF: \$3.88
Acreage- Min.: 4.43
Acreage- Max.: 4.43
Dimensions:
Zoning: OST Office Service Technology
Possible Use: Office / Industrial
Utilities: Onsite
Property Taxes:

County: Oakland
Crossroads: Between Beck and Novi Roads
Parcel #: 22-16-126-018

- Excellent Development Opportunity
- Zoning Allows for 3 Story Buildings
- Municipal Sewer and Water
- Close to I-96 Access
- Contiguous Parcel of 5.37 Acres To The East Also Available

For more information, contact:



Paul Gobeille, SIOR

paul.gobeille@colliers.com

Michael Yamada, SIOR

michael.yamada@colliers.com

(248) 540-1000

2 Corporate Drive, Suite 300
Southfield, MI 48076
248 540 1000

400 E. Washington St.
Ann Arbor, MI 48104
734 994 3100

www.colliers.com