



171

SLATER STREET
OTTAWA, ONTARIO

FOR LEASE

AVAILABILITIES

Suite 120 = 1,177 sq.ft

Suite 200 = 12,407 sq.ft

** Suites 200 & 300 can be made
contiguous for a total of 25,668 sq.ft.*

Suite 300 = 13,267 sq.ft.

Suite 700* = 13,266 sq.ft.

** Suites 700 & 800 can be made
contiguous for a total of 26,539 sq.ft.*

Suite 800* = 13,273 sq.ft.

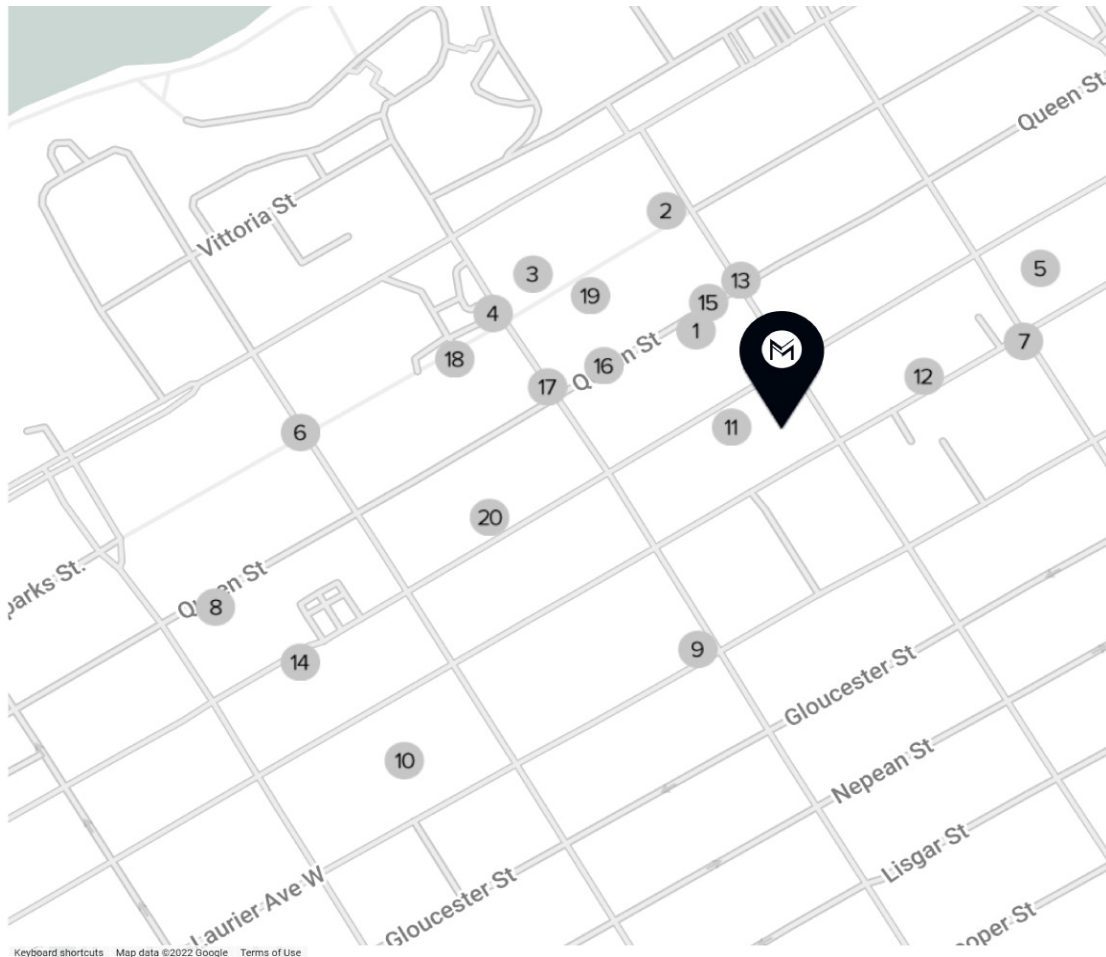
Suite 1010 = 4,671 sq.ft.

MACH

PROPERTY

SURROUNDING AREAS

171 Slater Street is a 13-storey office building also known as the Vanguard Building located at the intersection of Slater and O'Connor Street. Convenient to shopping, major hotels, government offices, Sparks Street Mall, gourmet restaurants and Parliament Hill. Close to public transit and major arterial routes. Located only 280 meters from the Parliament LRT Station. A Tim Horton's is available on the ground floor with direct access via the lobby. The building has a manned security desk with secured card access 24/7.



Keyboard shortcuts Map data ©2022 Google Terms of Use

- | | | | | | | | |
|---|--|----|---------------------------|----|--|----|--------------------|
| 1 | | 6 | | 11 | | 16 | |
| 2 | | 7 | Delta Hotels | 12 | | 17 | |
| 3 | | 8 | <i>Tim Hortons</i> | 13 | AIANA | 18 | 240 Sparks ST Mall |
| 4 | | 9 | SHOPPERS DRUG MART | 14 | BÂTON ROUGE
<small>STEAKHOUSES & BAR</small> | 19 | |
| 5 | | 10 | Rexall | 15 | | 20 | |

171 SLATER STREET, OTTAWA

	CAM	TAXES	TOTAL ADDITIONAL RENT
Please contact agent	\$9.35	\$5.81	\$15.16

SUITE COMMENTS	
Suite 200	Available immediately
Suite 300	Available immediately
Suite 700	Available immediately
Suite 800	Available immediately
Suite 1010	Model suite, corner unit featuring lots of natural light. Open concept ceiling with new LED lighting shown in the space. Available immediately
Parking	Underground Parking Available On-Site



LEASING INQUIRY

John Esposito

Senior Director of Leasing

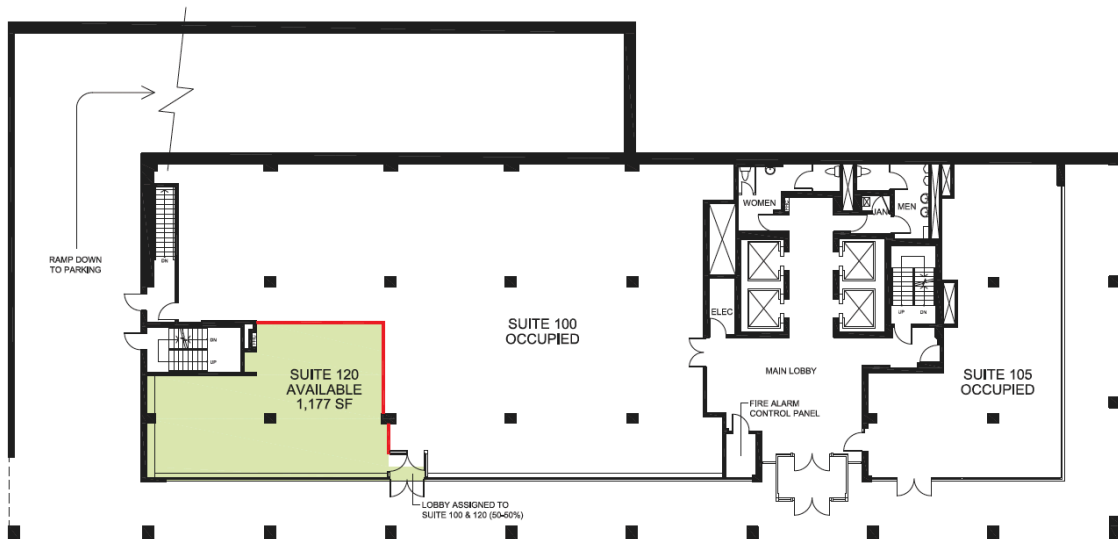
jesposito@groupemach.com

Max Francischiello, MBA

Senior Vice-President, Leasing

mfrancischiello@groupemach.com

FLOOR PLAN



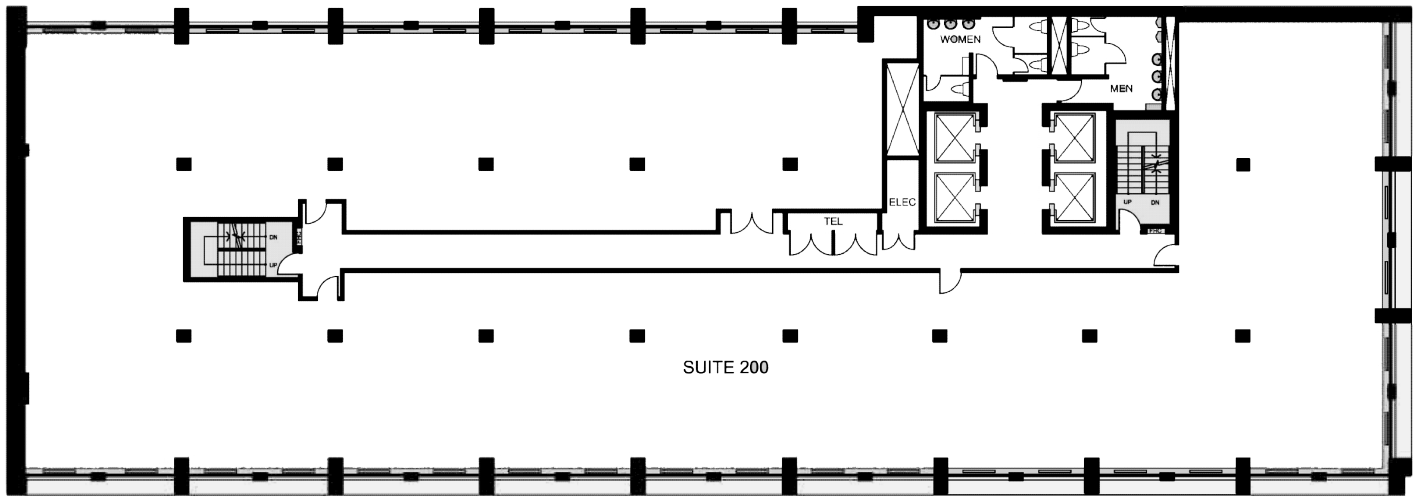
Suite 120 = 1,177 sq.ft.



groupemach.com | | |

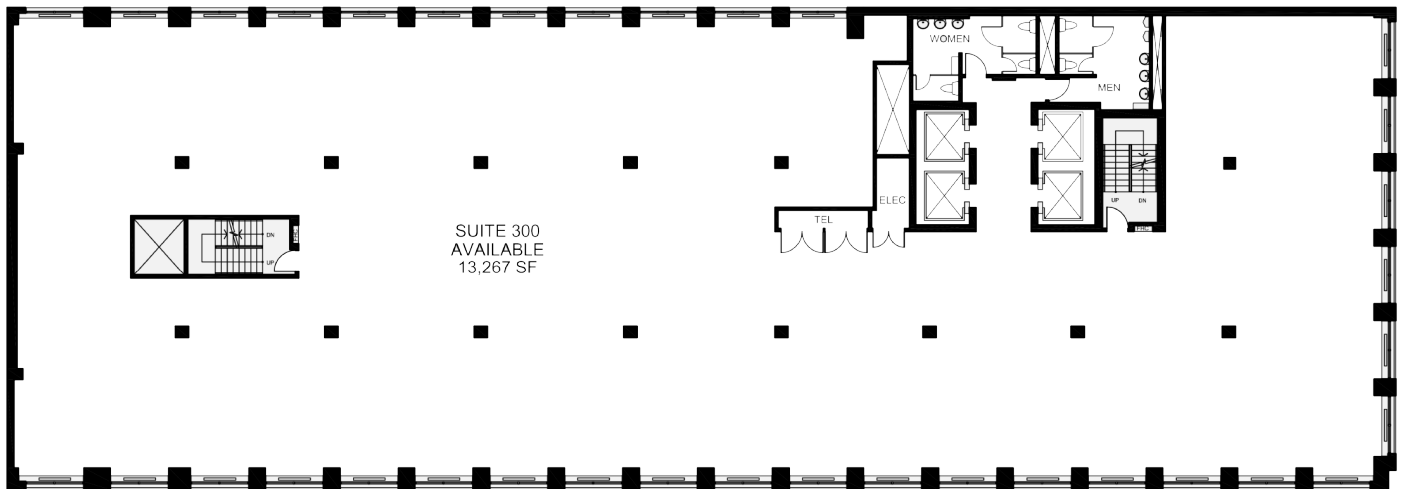
CONTACT US
FOR LEASING OPPORTUNITIES
(613) 565-4848

FLOOR PLAN

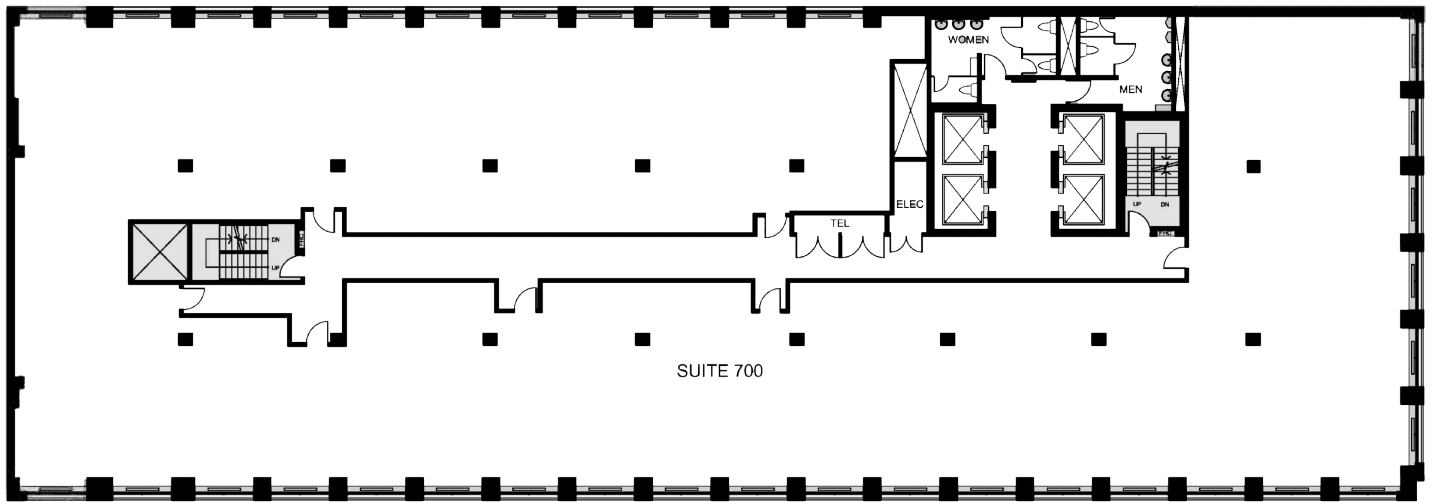


▼
Suite 200 = 12,401 sq.ft.

▲
Suite 300 = 13,267 sq.ft.



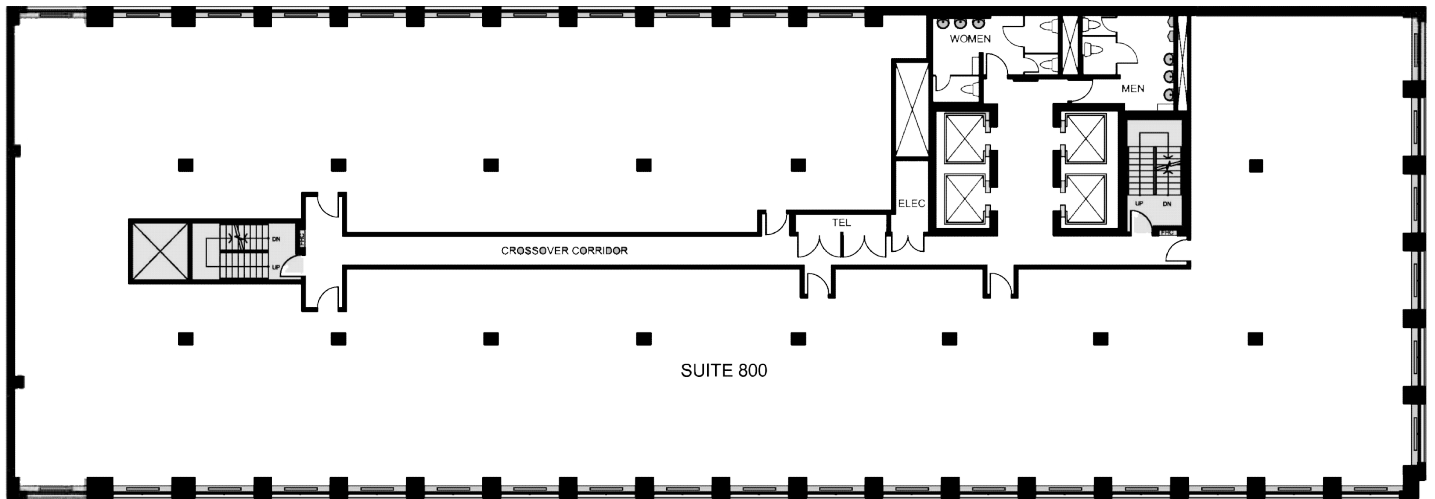
FLOOR PLAN



SUITE 700

▼
Suite 700 = 13,266 sq.ft.

▲
Suite 800 = 13,273 sq.ft.



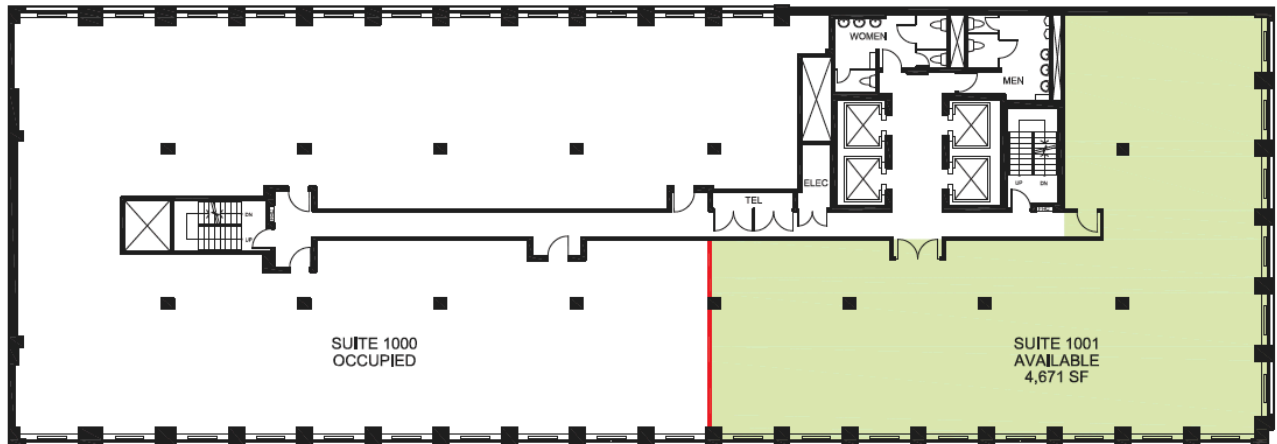
SUITE 800



groupemach.com | [in](#) | [f](#) | [@](#)

CONTACT US
FOR LEASING OPPORTUNITIES
(613) 565-4848

FLOOR PLAN



 AVAILABLE

RENTABLE AREA NOTED (SF)
AS PER ANSI/BOMA Z65.1 1996

 DEMISING WALL

0 10 50 FT.