

101-109 SOUTH STREET
ROCHESTER, MICHIGAN

INDUSTRIAL FOR SALE OR LEASE
4,897-9,794 Square Feet Available



**SIGNATURE
ASSOCIATES**
KNOW SIGNATURE | KNOW RESULTS

AVAILABLE IMMEDIATELY



PROPERTY FEATURES

- 4,897 – 9,794 square feet available
- 500 – 1,500 square feet of office
- 17,800 square foot building situated on 0.92 acres
- 14' clear height
- (4) grade level doors
- Zoned industrial
- 480 volts
- Building completely refurbished
- Lease Rate: \$6.25/sf NNN
- Sale Price: \$1,500,000



For more information, please contact:

KRIS PAWLOWSKI
(248) 359 3801
kpawlowski@signatureassociates.com

SIGNATURE ASSOCIATES
One Towne Square, Suite 1200
Southfield, MI 48076
www.signatureassociates.com

101-109 South Street – Rochester, Michigan

Industrial For Sale or Lease

4,897 – 9,794
Square Feet
AVAILABLE

Site Plan



For more information, please contact:

KRIS PAWLOWSKI
(248) 359 3801
kpawlowski@signatureassociates.com

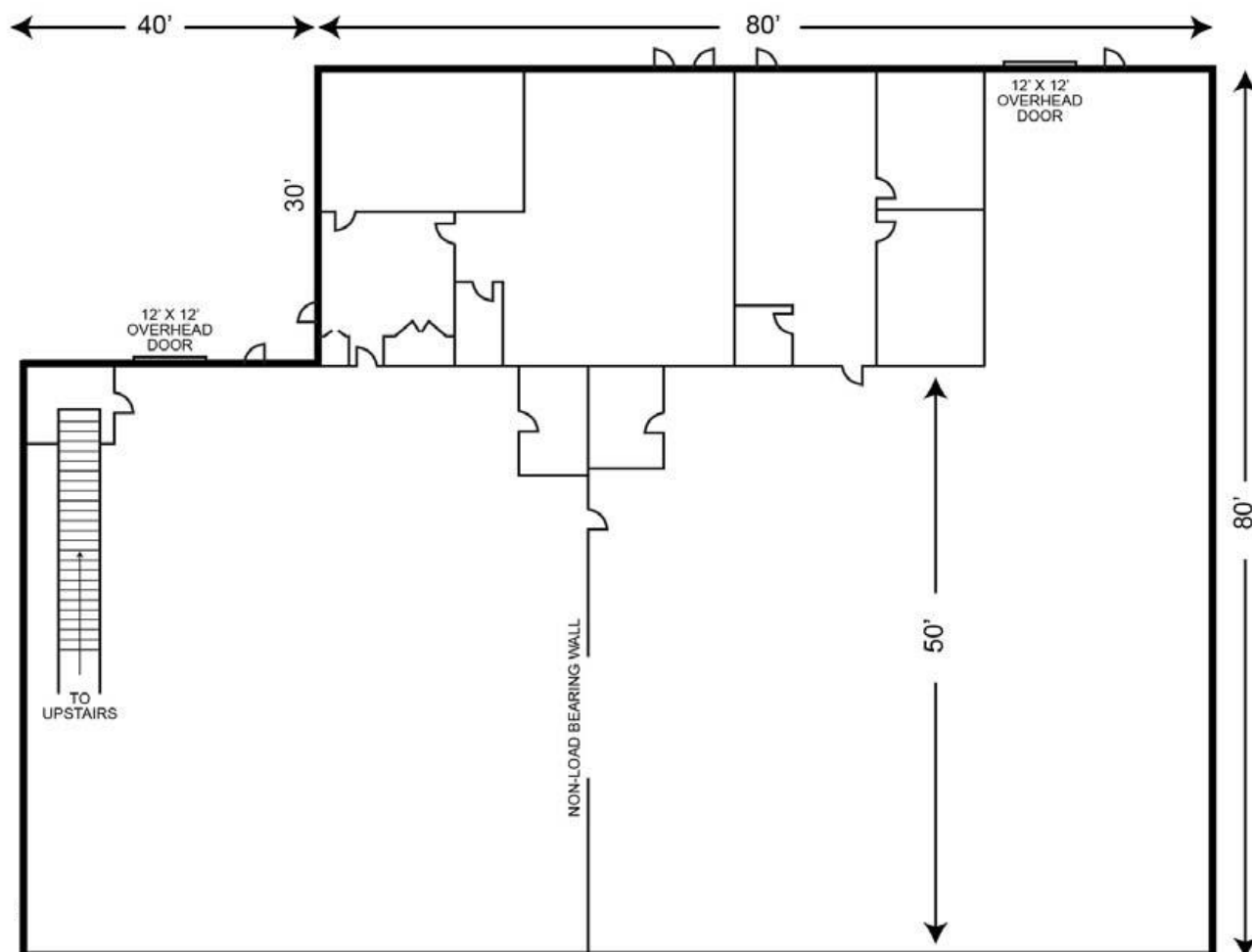
SIGNATURE ASSOCIATES
One Towne Square, Suite 1200
Southfield, MI 48076
www.signatureassociates.com

101-109 South Street – Rochester, Michigan

Industrial For Sale or Lease

4,897 – 9,794
Square Feet
AVAILABLE

Floor Plan



For more information, please contact:

KRIS PAWLOWSKI
(248) 359 3801
kpawlowski@signatureassociates.com

SIGNATURE ASSOCIATES
One Towne Square, Suite 1200
Southfield, MI 48076
www.signatureassociates.com

Information is subject to verification and no liability for errors or omissions is assumed. Price is subject to change and listing withdrawal.