

## Luepke Station

1300 Washington Street  
Vancouver, WA

Rare Mid-Town Corner



±2,252 SF Retail Space

\$22.00/SF, NNN = \$3.61

On the National Register of Historical Places

CX Zoning: Retail, eating and drinking allowed

Located on a signalized corner and next to St. James Catholic Church

Open floor plan with 11' high ceilings

Full height glass storefront windows including iconic round window

Huge walk-in cooler

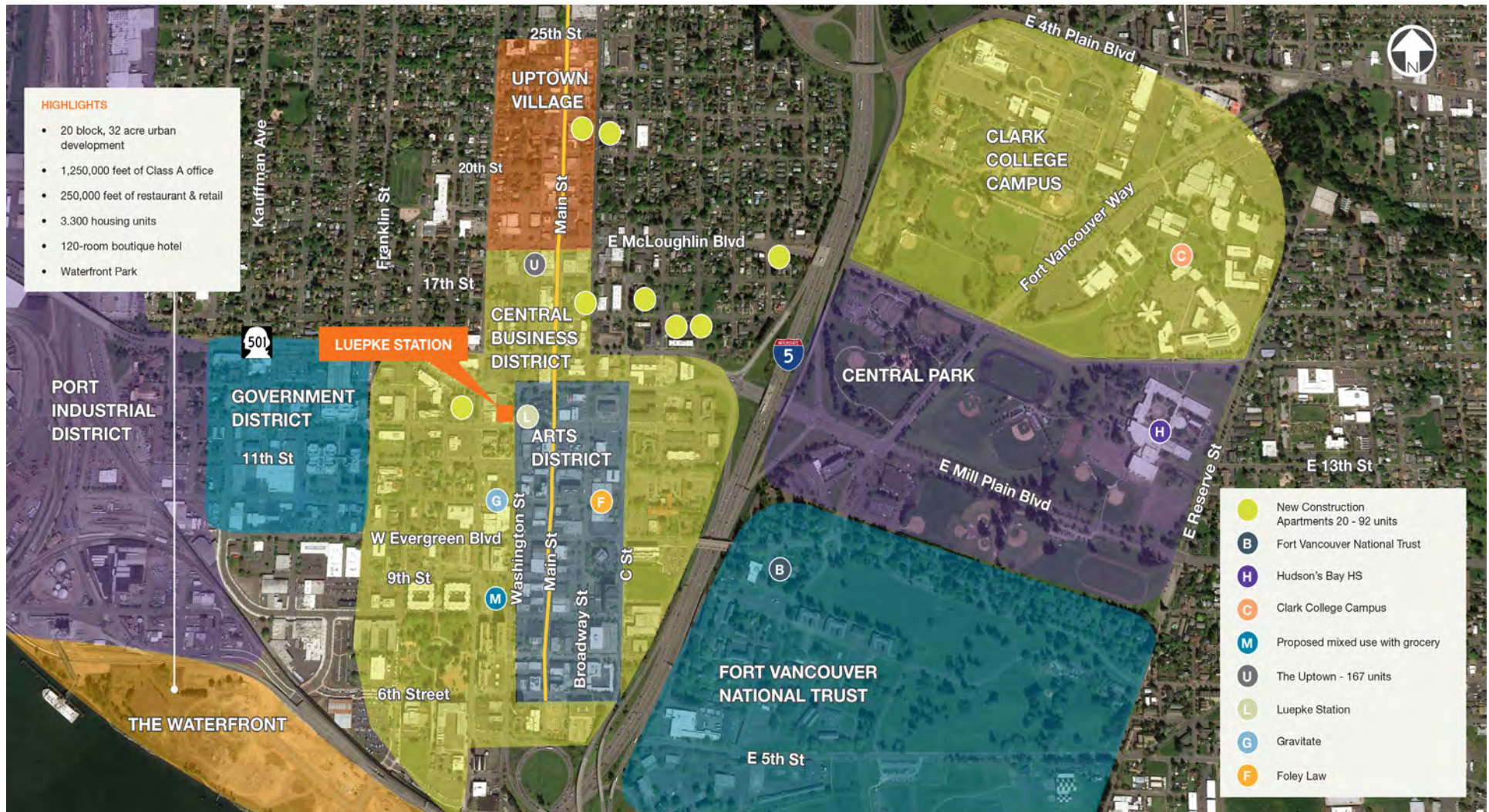
Co-tenant with Tap Union Freehouse and iconic Luepke Flowers & Finds

Access to 13 on-site parking spaces

### Contact

**Caryl Brown**  
503.721.2725  
cbrown@kiddermathews.com





## Contact

**Caryl Brown**  
503.721.2725  
cbrown@kiddermathews.com