

MSC

CHESTNUT
STREET

PHILADELPHIA, PA

**320 SF RETAIL AVAILABLE
FOR LEASE**

William Schwartz
JEWELRY



1831 CHESTNUT STREET



PROPERTY DETAILS

- ▶ Rare 320 SF retail opportunity ideal for gallery, boutique or small-footprint user
- ▶ Located on highly trafficked retail street one block from Rittenhouse Square
- ▶ Historic building with high ceilings, large window display and excellent street visibility
- ▶ Available Fall 2025

JOIN NEIGHBORING TENANTS

BARNES & NOBLE swēetgreen

ALLEN EDMONDS MAC

jen's BOYDS

DEMOGRAPHICS

Center City Trade Area
From the River to River between Girard Avenue & Tasker Avenue

EST. POPULATION EST. MEDIAN HH INCOME

188,131

\$99,150

EST. MEDIAN AGE

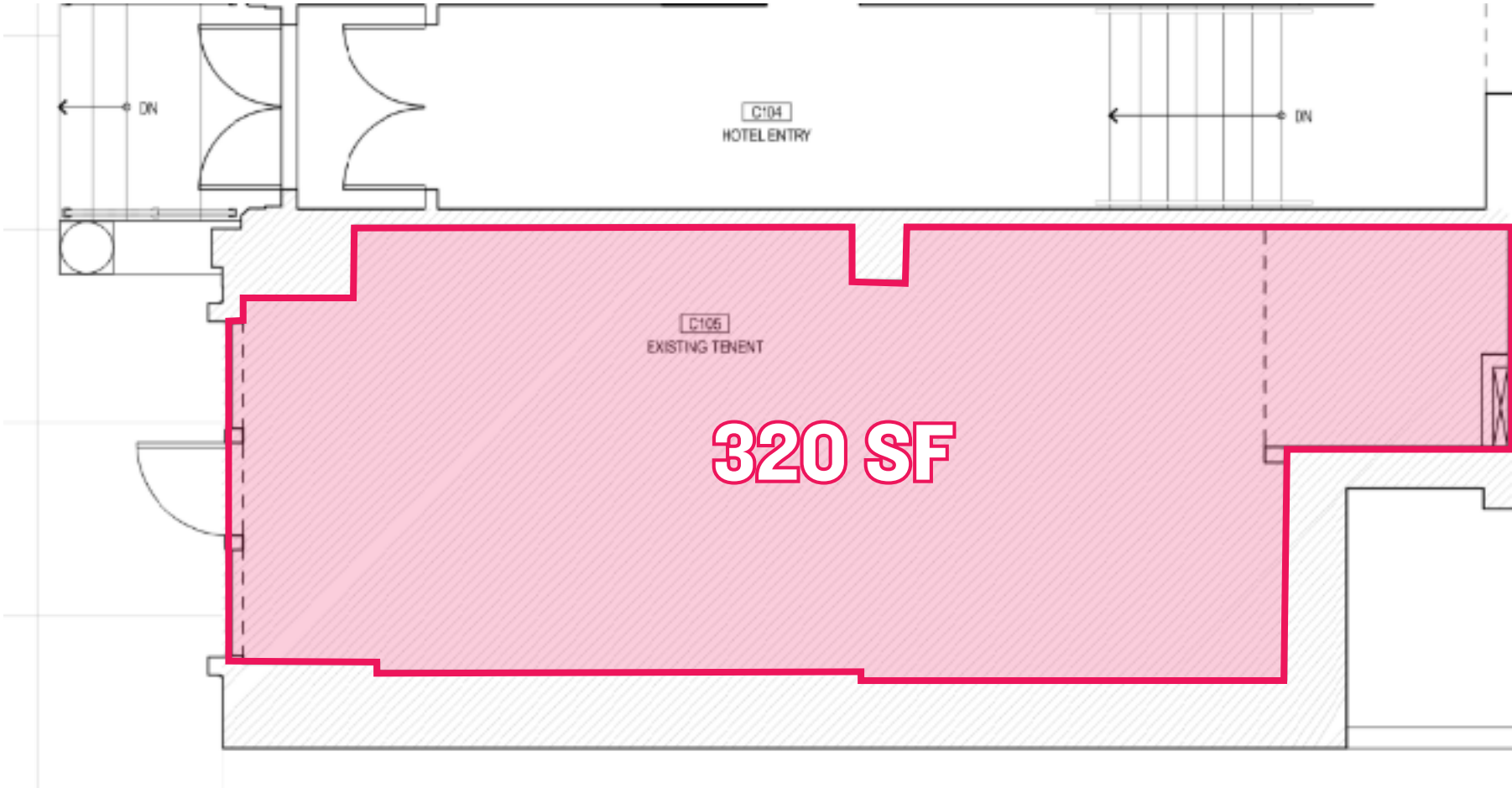
35

EST. EMPLOYEES

258,822

FLOOR PLAN

CHESTNUT STREET

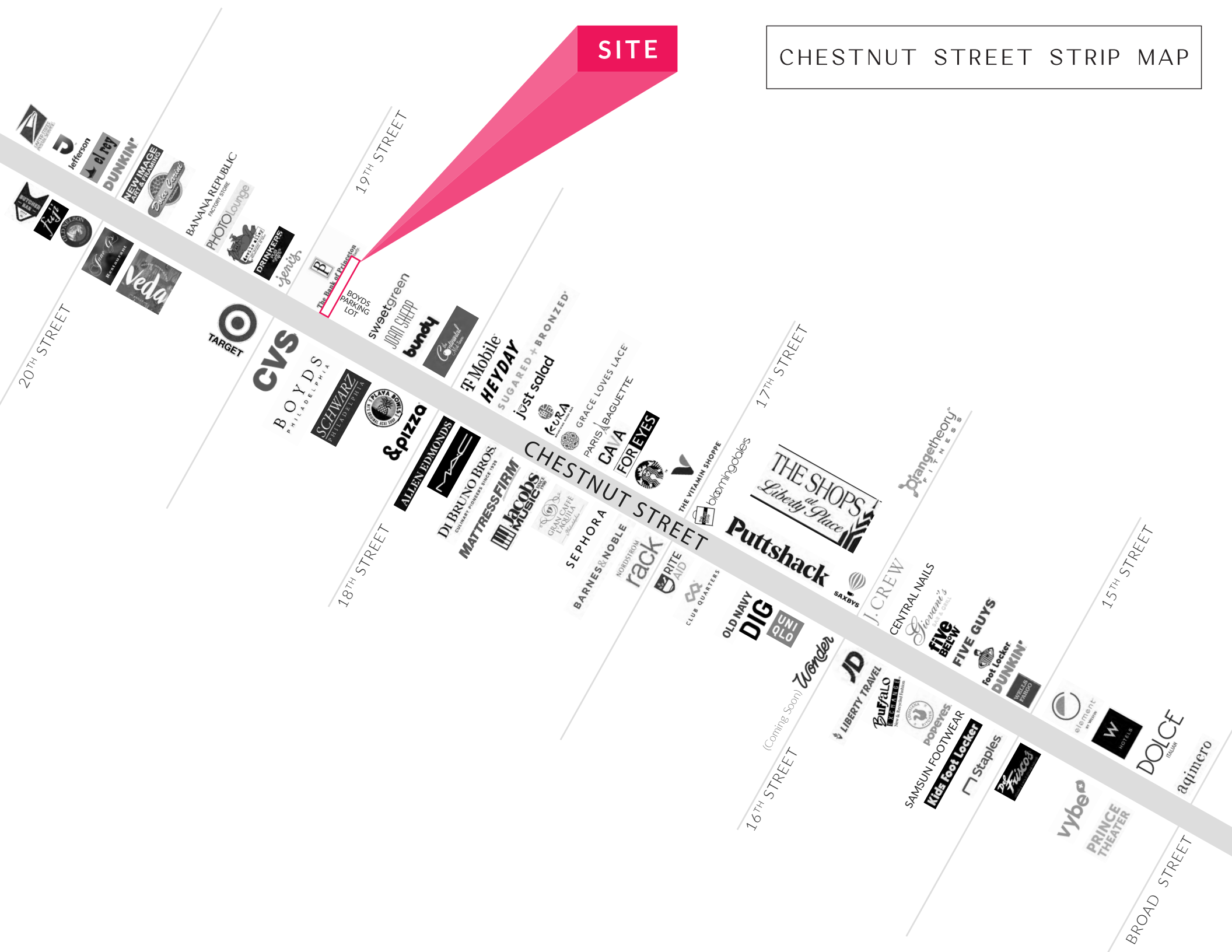


PHOTOS



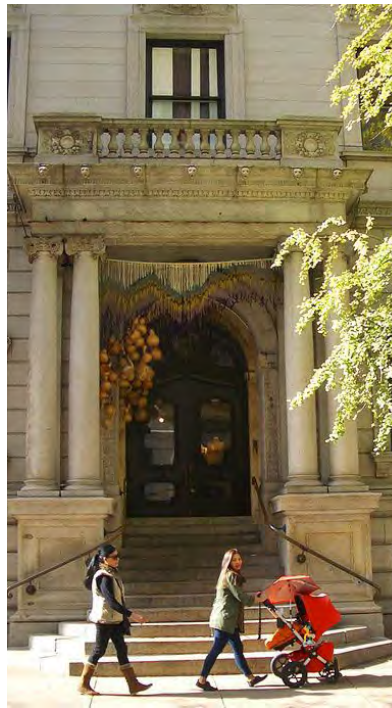
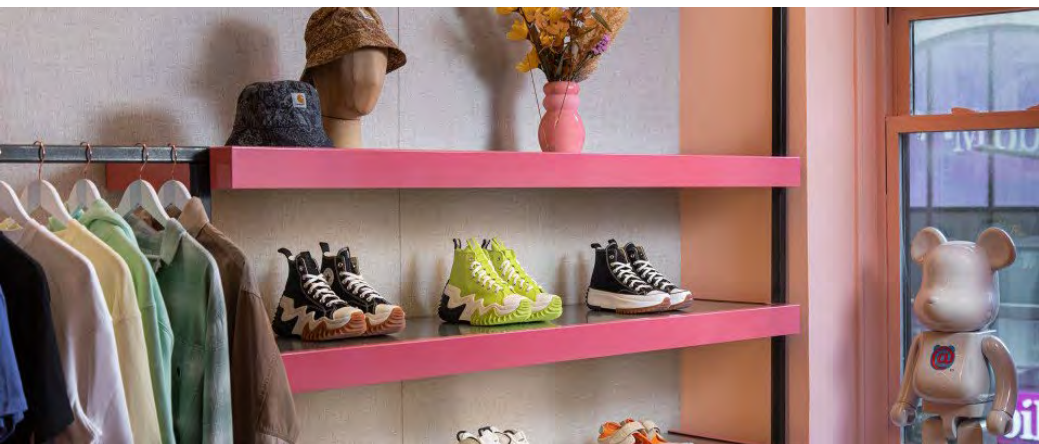
CHESTNUT STREET STRIP MAP

SITE



RITTENHOUSE SQUARE NEIGHBORHOOD MAP





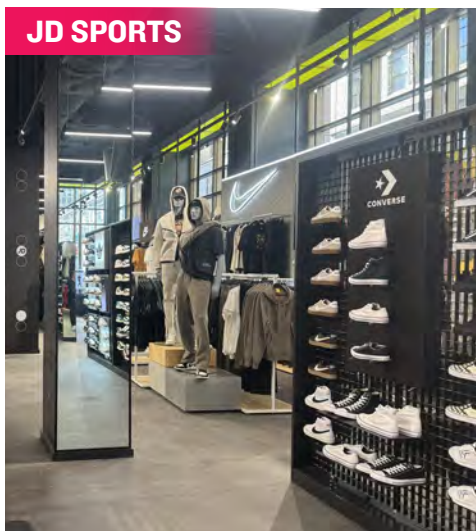
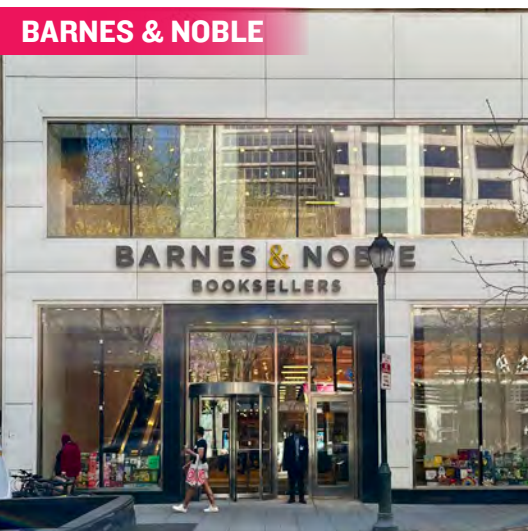
RITTENHOUSE SQUARE IS THE MOST FAMOUS NEIGHBORHOOD IN PHILADELPHIA

-serving as the epicenter of retail, dining, daytime office traffic, hotels, affluent residential, and nightlife. The trade area is positioned with unmatched access to Center City's most impactful traffic drivers. From an ultra-affluent residential base, to over **44M SF of office**, to an acclaimed arts district and a flourishing tourism base, it truly is a live/work/play 24 hour neighborhood. As the **5th most walkable downtown** in the country, it is easily accessed by the various other highly connected and flourishing Philadelphia neighborhoods. It provides maximum exposure along with unparalleled national co-tenancy in a downtown setting and serves as the ideal city entry point for most national retailers and restaurants.

MSC

CHESTNUT STREET

RETAIL



BIGGER BOX TENANTS

such as Barnes & Noble, Bloomingdale's Outlet, Uniqlo, Nordstrom Rack and Sephora mixed with local fashion institutions such as Boys Department Store, makes Chestnut Street a vibrant and diverse retail corridor that benefits from strong pedestrian counts and cross-shopping with neighboring Walnut Street.

WALNUT STREET

RETAIL

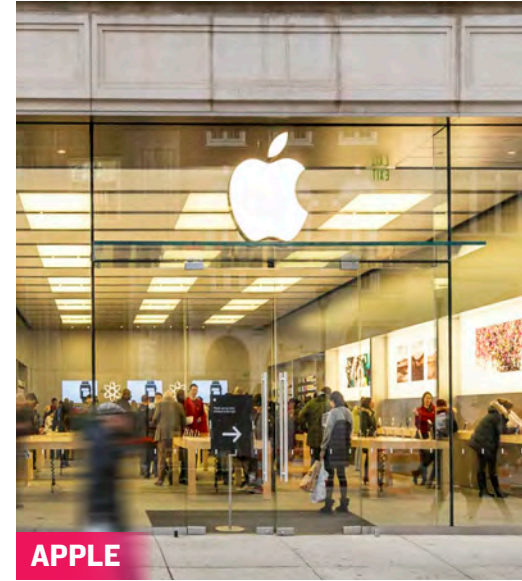


rag & bone
NEW YORK

ARITZIA



ALO



APPLE



Glossier.



CB2

VINCE.



FAHERTY



ANTHROPOLOGIE

lululemon  athletica



WARBY PARKER

VERONICA BEARD



MADEWELL

 gorjana

Walnut and Chestnut Streets, along with the connecting numbered streets, have become attractive locations for both high-end and fast-fashion retailers who value the city's highly concentrated, cosmopolitan and diverse customer base. Walnut Street is the city's premier "high street" retail corridor with four primary blocks that span Broad Street to 18th Street. With a mix of upscale apparel/contemporary stores, athleisure, digitally native brands, jewelry, and furniture, **WALNUT STREET'S LEASING ACTIVITY IS THE STRONGEST IT HAS EVER BEEN.**



HEYDAY



RESCUE SPA



BARRYS BOOTCAMP

FITNESS, HEALTH & WELLNESS



SOULCYCLE



COREPOWER YOGA



EQUINOX



SOLIDCORE

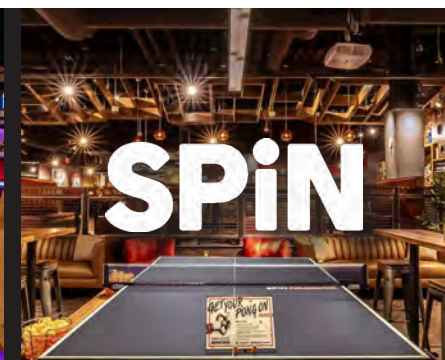
HOTELS



FLIGHT CLUB
SOCIAL DARTS



Puttshack



SPiN



SANDBOX VR

NIGHT LIFE

RESTAURANTS

From renowned Stephen Starr, Michael Schulson and Cook N Solo restaurants to local James Beard award-winning chefs, Rittenhouse Square is a culinary mecca and receives national recognition for its booming restaurant scene.



vernick
food & drink



QSR / SPECIALTY

Rittenhouse Square's density, day-time population and unparalleled exposure makes it an ideal location for national QSRs looking to enter the Philadelphia market.



MSC



JACOB COOPER

jcooper@hellomsc.com
215.813.3784

ANNELLYSE CHAN

achan@hellomsc.com
732.533.3363