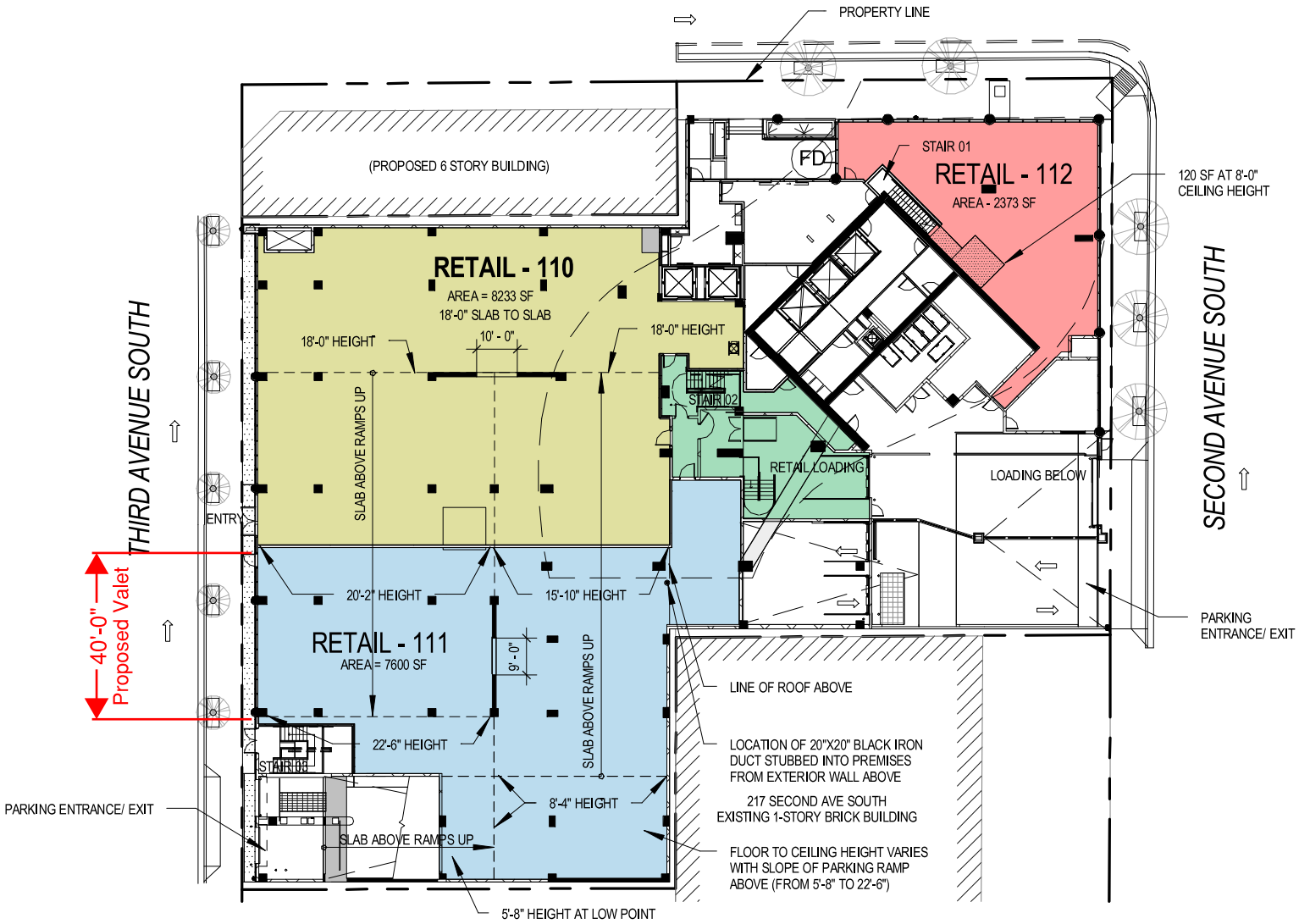


DEMONBREUN STREET



RETAIL - GROUND FLOOR

1

1" = 40'-0"

AREA CALCULATIONS:
 FOR RETAIL UNITS:
 ALL MEASUREMENTS OF THE RENTABLE SQUARE FOOTAGE OF THE RETAIL PREMISES SHALL BE MADE ON ALL FLOOR LEVELS IN THE PREMISES, INCLUDING ANY MEZZANINE AREAS, MEASURED FROM THE EXTERIOR FACE OF EXTERIOR WALLS, STORE FRONTS, WALLS FRONTING INTERIOR COMMON AREAS, CORRIDORS AND SERVICE AREAS, AND THE CENTER LINE OF PARTY WALLS OR COMMON PARTITIONS. NO DEDUCTION OR EXCLUSIONS FROM RENTABLE SQUARE FOOTAGE SHALL BE MADE BY REASON OF COLUMNS, STAIRS, ELEVATORS, ESCALATORS, SHAFTS, RECESSED ENTRIES, RECESSED ENTRY OR EXIT VESTIBULES, OR OTHER INTERIOR CONSTRUCTION OR EQUIPMENT.
 FOR COMMON AREA ROOMS:
 COMMON AREA ROOMS SHOW THE NET INTERIOR SQUARE FOOTAGE, DEFINED BY THE INTERIOR FACE OF PARTITION WALLS.

- NOTES:
1. DESIGN SUBJECT TO CHANGE BASED ON CITY PERMITTING PROCESS.
 2. INFORMATION PROVIDED IS DIAGRAMMATIC ONLY AND DOES NOT REPRESENT AS-BUILT DIMENSIONS. ALL INFORMATION SHALL BE VERIFIED IN THE FIELD.
 3. F.C = FLOOR SLAB TO STRUCTURAL CEILING HEIGHT

R 110.6

01/30/2015