

235 Mercer Junction  
Macon, GA 31210  
Bibb County

\$59,900



## LAND FOR SALE

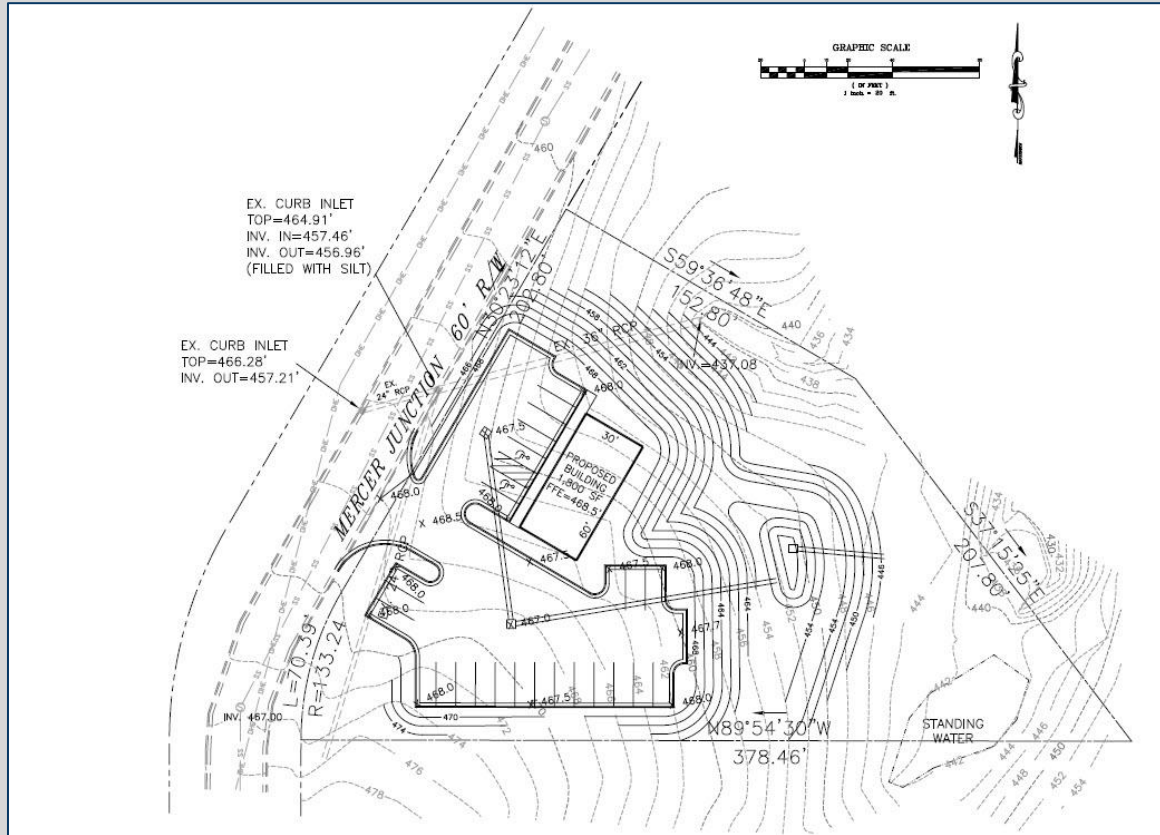
- 1.24 acres
- Conveniently located less than 1 mile from Interstate 475 (Exit 5)
- Zoned PDE (planned development)
- Motivated Owner will consider Build-to-Suit



4124 Arkwright Road, Suite 1, Macon, GA 31210 | (478) 750-7507 | Fax (478) 750-9002 | [www.thesummitgroupmacon.com](http://www.thesummitgroupmacon.com)

For additional information contact: **KEVIN HARKINS** | Cell (478) 338-0623 | [kharkins@thesummitgroupmacon.com](mailto:kharkins@thesummitgroupmacon.com)

235 Mercer Junction  
 Macon, GA 31210  
 Bibb County



4124 Arkwright Road, Suite 1, Macon, GA 31210 | (478) 750-7507 | Fax (478) 750-9002 | [www.thesummitgroupmacon.com](http://www.thesummitgroupmacon.com)

For additional information contact: **KEVIN HARKINS** | Cell (478) 338-0623 | [kharkins@thesummitgroupmacon.com](mailto:kharkins@thesummitgroupmacon.com)

The information contained herein has been compiled from various sources, both private and public. It is accurate and complete only to the extent to which The Summit Group has been able to ascertain from third party sources. As such, no warranty or guarantee is given or implied with regard to the accuracy or completeness of any information contained herein. Any interested party shall be required to conduct its own due diligence and investigations to verify, review, audit, or otherwise insure the information contained herein.