



THE ESTATES ON COMMERCE

GRAND LUXURY CONDOMINIUMS

Historic elegance meets modern luxury!

Ready for build-out! Lavish one-and two-story condos in the heart of downtown Lynchburg. Masterfully designed by renowned local designer Moyanne Harding, I.D.S., these seven 2,500-3000 square foot luxury homes come complete with rich finishes and a prime location in the heart of this city full of history and breathtaking views. Not to mention interior private parking, fitness center and a host of other amenities.

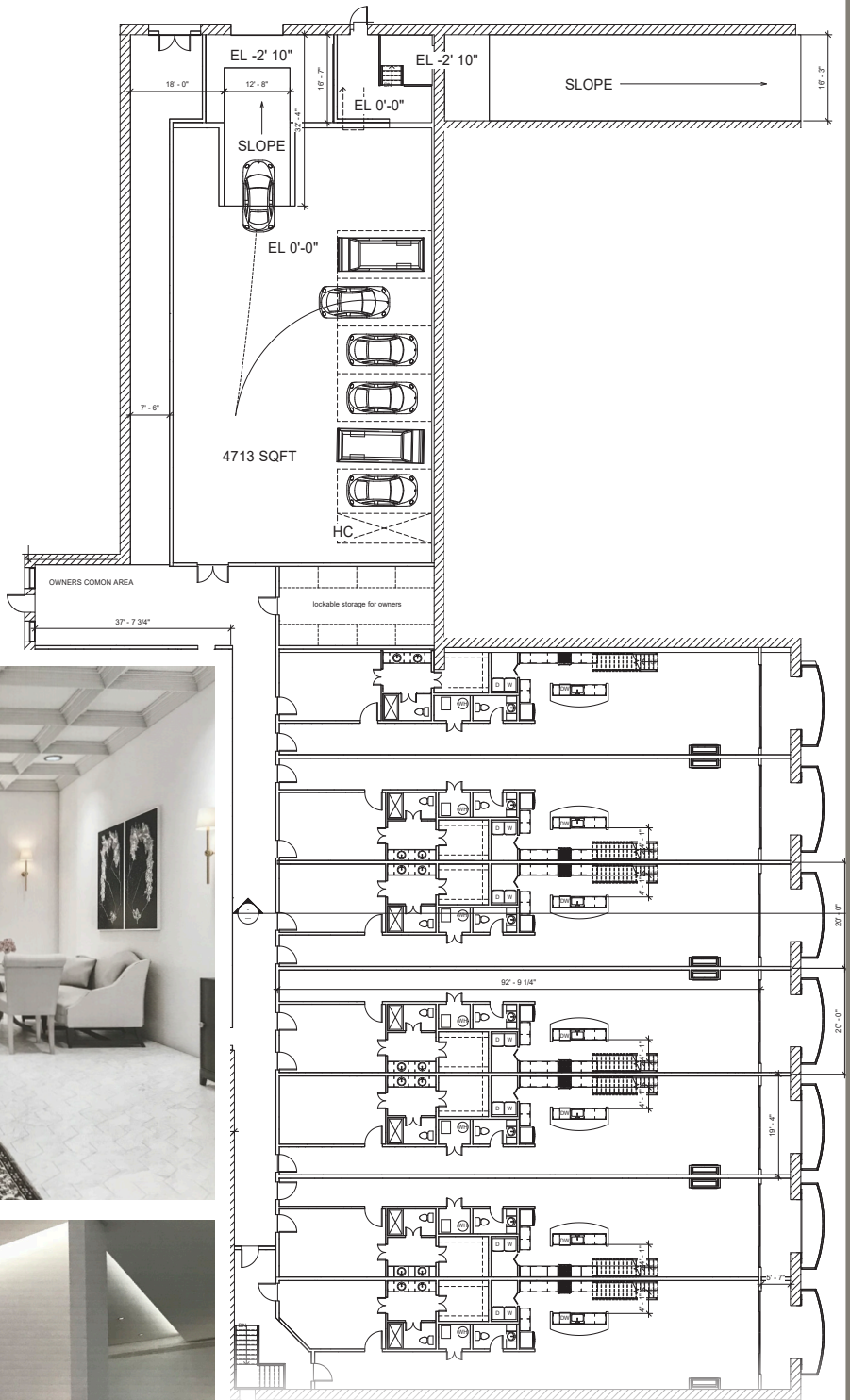
"It has been my dream to design and build these magnificent homes in the heart of my gorgeous hometown"



*You won't find homes like this anywhere else in the city!
Construction begins in late 2018 units start at \$999,000.*



1225 Commerce Street



Interiors by
Moyanne
(434) 851-9421
107 13th Street, Lynchburg, VA 24504