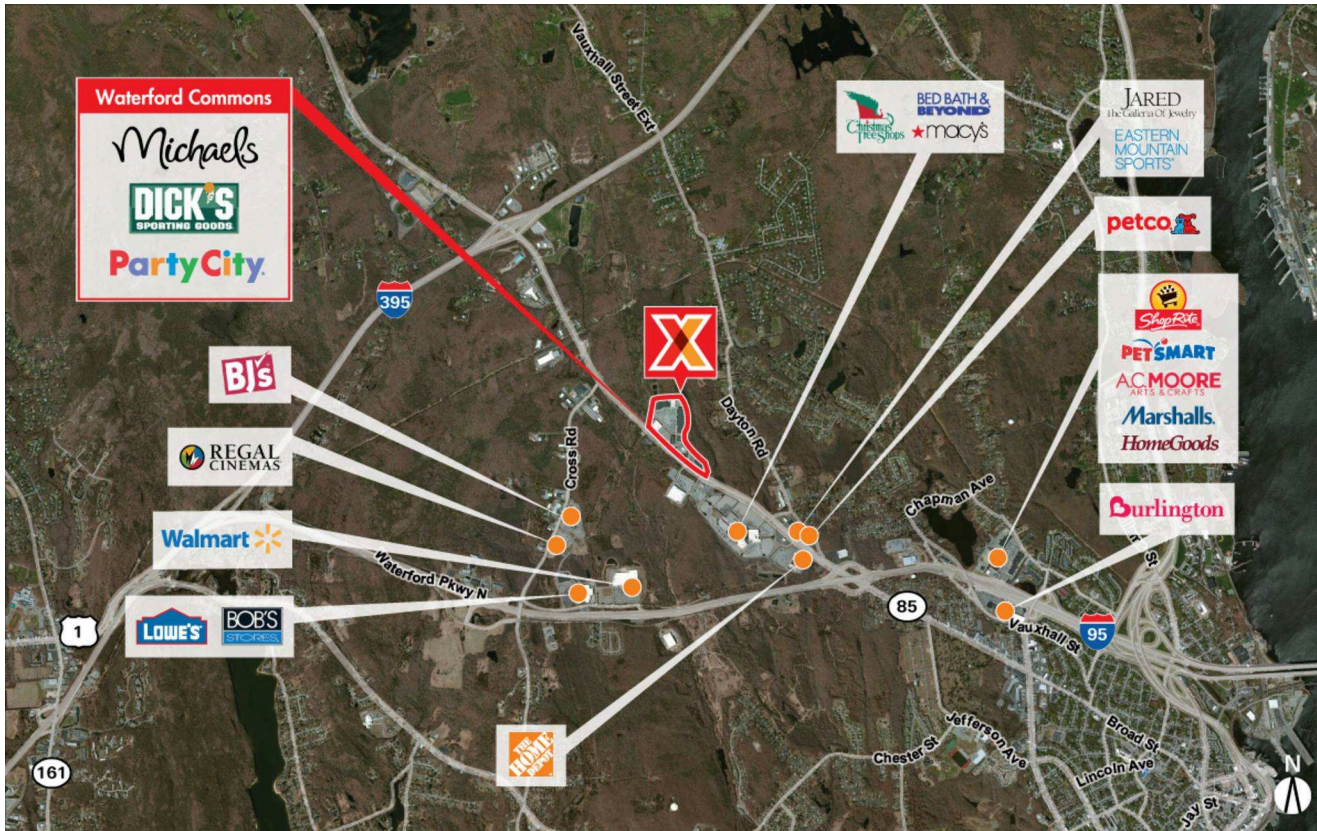


Norwich-New London, CT

# WATERFORD COMMONS

41.381894, -72.150731  
903-915 Hartford Turnpike | Waterford, CT 06385



**CENTER SIZE:** 236,730 SF



DEMOGRAPHICS	5 MILE	10 MILE	25 MILE
👤	75,391	159,565	469,527
🏠	28,638	61,422	183,876
💰	\$77,773	\$85,312	\$92,544

Power center with a strong lineup of national retailers including Dick's Sporting Goods, Party City, DSW, Best Buy, Five Below, Michaels, Books-A-Million & Verizon Wireless

Across from the 800,000 SF Crystal Mall anchored by JCPenney, Macy's, Sears, Bed Bath & Beyond and Christmas Tree Shops

Retail location surrounded by an affluent population with an average household income of \$77,000+ within 5 miles

Easily accessible commercial space to I-95 and I-395

Close proximity to United States Coast Guard Academy and Connecticut College with a combined enrollment of 3,000+ students

Restaurant space available for lease

Norwich-New London, CT

# WATERFORD COMMONS

41.381894, -72.150731  
903-915 Hartford Turnpike | Waterford, CT 06385



## AVAILABLE SPACE

04	4,000 SF
06	24,512 SF
13	4,192 SF
16	1,500 SF
29	2,403 SF

## CURRENT RETAILERS

N.A.P.	Raymour & Flanigan	
N.A.P.1	Best Buy	
N.A.P.2	Ruby Tuesday	
01	Dick's Sporting Goods	50,000 SF
02	Party City	10,000 SF
03	Pier 1 Imports	9,408 SF
05	Lane Bryant	5,000 SF
08A	DSW	18,263 SF
08B	Five Below	9,393 SF
09	Michaels	21,306 SF
10	Books-A-Million	22,824 SF
11	Great Clips	2,200 SF
12	Jos. A. Bank	4,091 SF
14	Yankee Candle Co.	2,500 SF
15	Pearle Vision	2,000 SF
17	Moe's Southwest Grill	3,200 SF
18	Scottrade	2,000 SF
19	Aspen Dental	2,635 SF
20	Jersey Mike's Subs	1,400 SF
21	Cold Stone Creamery	1,600 SF
22	Music and Arts Center	2,560 SF
23	Smashburger	2,560 SF
24	Sprint	2,557 SF
25	Panera Bread	4,488 SF
26	Ulta Beauty	10,430 SF
27	Pure Barre	1,410 SF
28	Motherhood Maternity	1,500 SF
28B	Sleep Number	3,064 SF
30	Vein Clinics of America	3,734 SF

5152 - 08.24.18