

TO LET - INDUSTRIAL

1 & 3 RENNIE PLACE

COLLEGE MILTON IND ESTATE, EAST KILBRIDE, G74 5HD



KEY HIGHLIGHTS

- 9,171 to 18,342 sq ft
- Prominent position fronting Glenburn Road
- New roof and roof lights being installed
- 4.45M eaves rising to 5.62M at the pitch
- Property undergoing full comprehensive refurbishment
- Units available separately or together
- Secure yard to rear
- Convenient motorway access

SUMMARY

Available Size	9,171 to 18,342 sq ft
Rent	£60,000 - £120,000 per annum
Rates Payable	£13,695 per annum Unit 1 - £27,500 / Unit 3 - £26,750
Rateable Value	£27,500
VAT	Applicable
Legal Fees	Each party to bear their own costs
EPC Rating	Upon enquiry

DESCRIPTION

Standalone industrial building of steel portal frame construction undergoing comprehensive full refurbishment works.

Each unit provides rear secure yard, main open-plan warehouse space, tea-preps at ground floor level, WC's on both ground and first floor, open-plan first floor office space of c1,500 sq ft in each unit.

Refurbishment works include full over-clad of roof with new light panels, full internal and external redecoration, new double glazed windows, LED lights throughout.

Eaves height of 4.45M rising to 5.62M at the pitch.

Mains supplies to power (3 phase), gas and water are provided.

LOCATION

Rennie Place is located within the popular College Milton Industrial Estate of East Kilbride just 1.5 miles west of the town centre and 8 miles south of Glasgow City Centre.

More specifically the subjects are situated on the south side of Rennie Place fronting onto Hawbank Road.

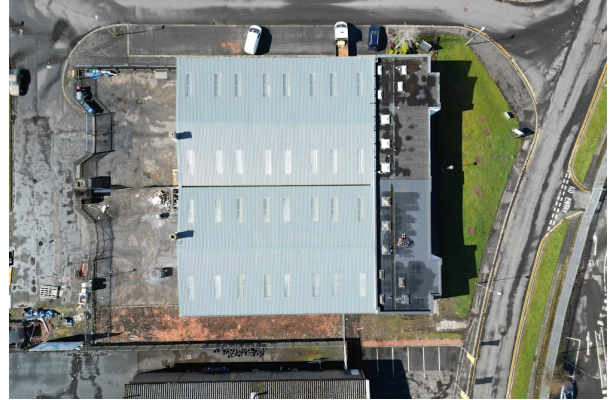
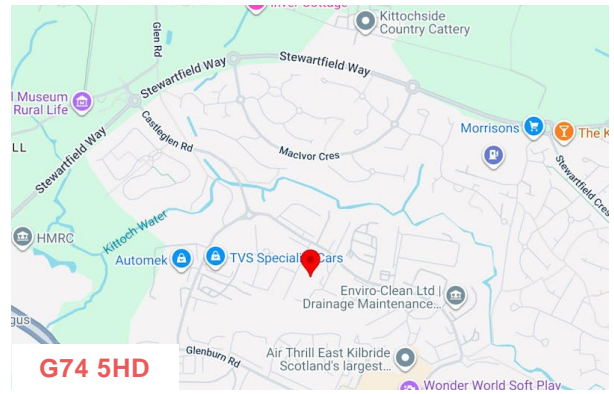
Convenient M74 & M77 motorway access provided.

Nearby occupiers include Arnold Clark, Enviroscot, Theraplay, VPK, Smith Electrical.

ACCOMMODATION

The accommodation comprises the following areas:

Name	sq ft	sq m	Availability
Unit - 1	9,171	852.01	Available
Unit - 3	9,171	852.01	Under Offer
Total	18,342	1,704.02	



VIEWING & FURTHER INFORMATION

Gregor Brown

0141 212 0059 | 07717447897
gb@gmbrown.co.uk

Kerrie Currie

0141 212 0059 | 07778 431703
kc@gmbrown.co.uk



G·M·BROWN