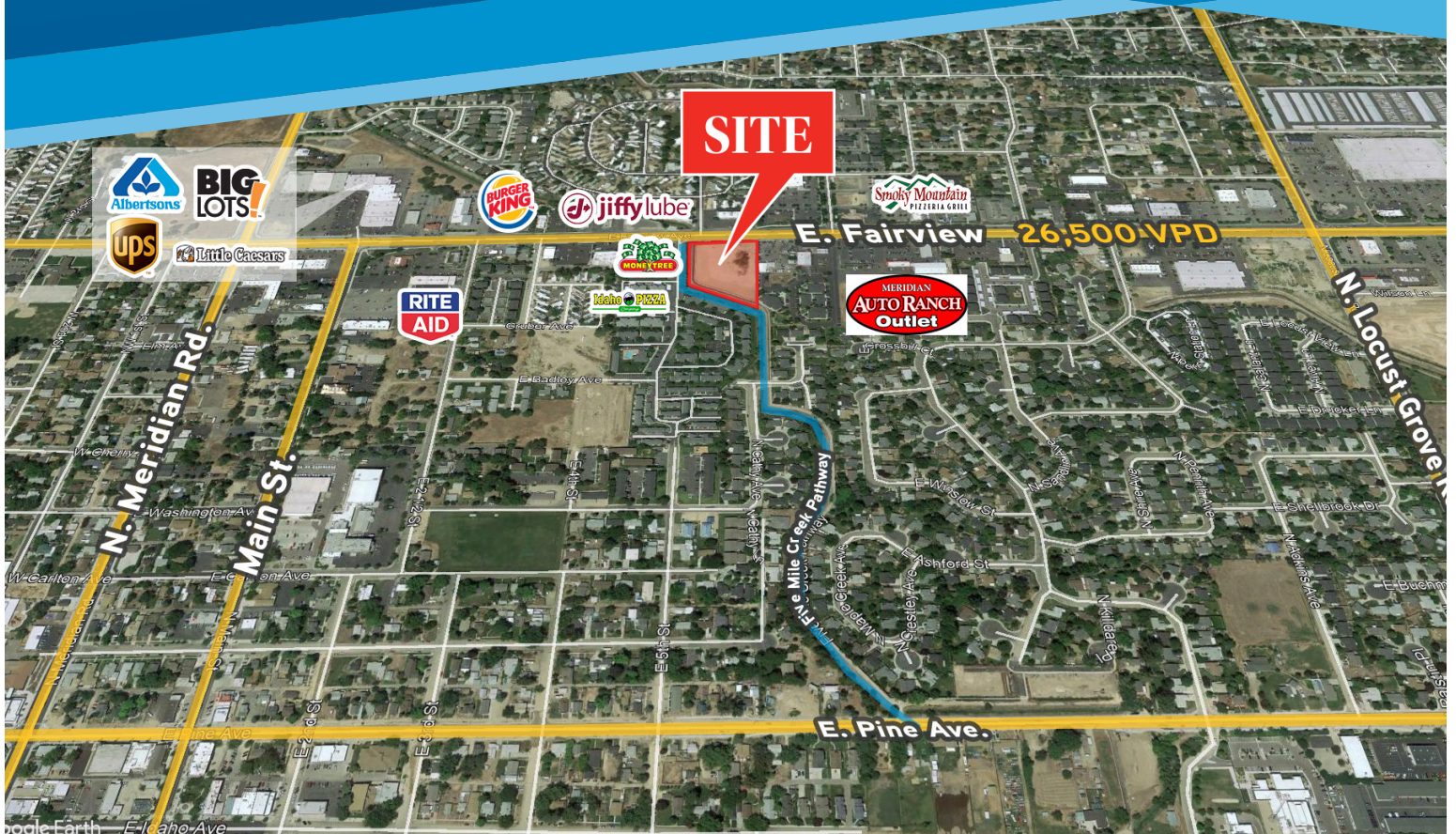


**FOR SALE
OR LEASE**

715 E. FAIRVIEW
MERIDIAN, ID



PROPERTY INFORMATION

Property Type: Land
Land Size: 3.13 Acres
Parcel #: S1107212505
Zoning: City of Meridian C-G
Price: Contact Agent
Lease Rate: Contact Agent

Demos	1 Miles	3 Miles	5 Miles
Population	13,776	99,005	191,351
Households	5,480	35,131	69,366
Avg. Income	\$70,896	\$87,181	\$87,922

HIGHLIGHTS

- » Land available for sale or build-to-suit lease opportunities
- » Close to Meridian Road with many possible uses: owner user (office, full-service restaurant, auto-related use, church, daycare, school), retail, office, multifamily & more
- » Bordered by the Five Mile Creek Pathway on the west & south sides



KELLY SCHNEBLY
208 472 1650
kelly.schnebly@colliers.com

MALLISA JACKSON
208 472 1654
mallisa.jackson@colliers.com

JIMMY ROUMANIS
208 472 2840
jimmy.roumanis@colliers.com

**FOR SALE
OR LEASE**

715 E. FAIRVIEW
MERIDIAN, ID



KELLY SCHNEBLY
208 472 1650
kelly.schnebly@colliers.com

MALLISA JACKSON
208 472 1654
mallisa.jackson@colliers.com

JIMMY ROUMANIS
208 472 2840
jimmy.roumanis@colliers.com