

Commercial Building

1204 East Wendover Avenue | Greensboro, NC 27405



- ◆ Available For Lease
- ◆ Retail or Office Space
- ◆ 3,300 SF
- ◆ High Traffic Counts - 43,000 Average Daily
- ◆ Zoned Commercial Medium

Conveniently located in northeast Greensboro at the corner of East Wendover Avenue and East Lindsay Street and minutes from Highway 29.

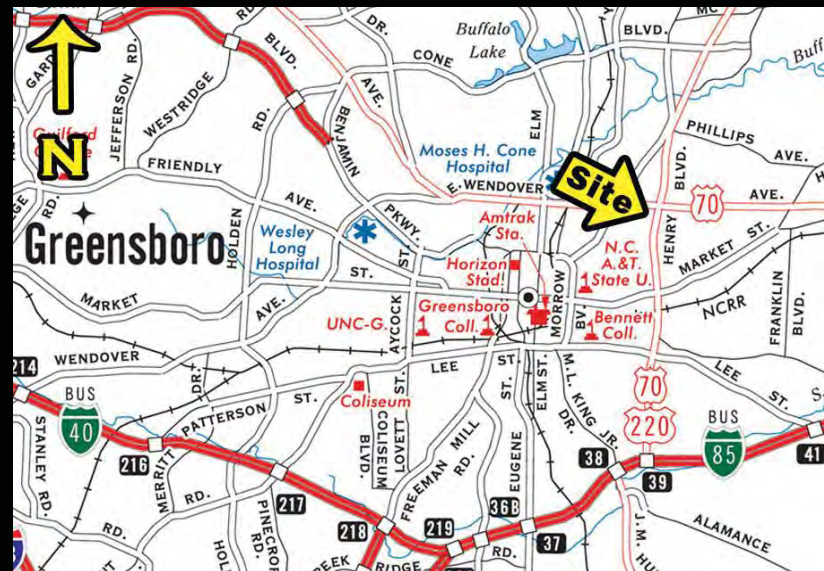
The property is currently used as office and warehouse space.

JJ Joubran, CCIM
(336) 270-9775
JJ@JoubranCommercial.com



Commercial Building

1204 East Wendover Avenue | Greensboro, NC 27405



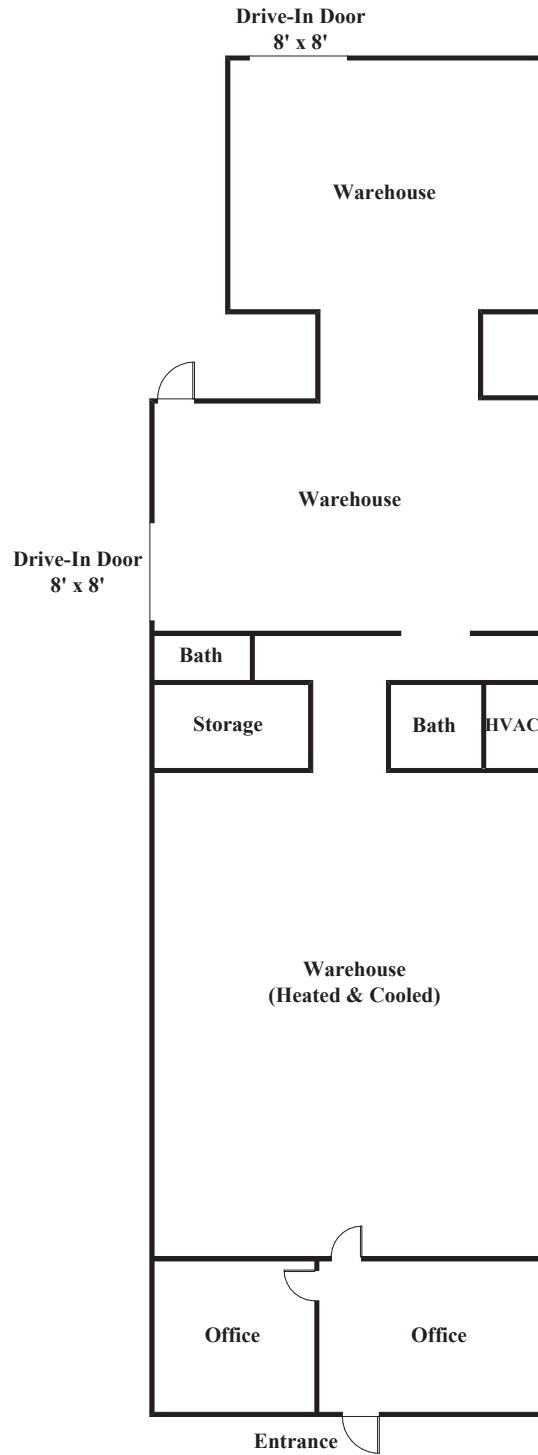
JJ Joubran, CCIM

(336) 270-9775

JJ@JoubranCommercial.com

1204 East Wendover Avenue

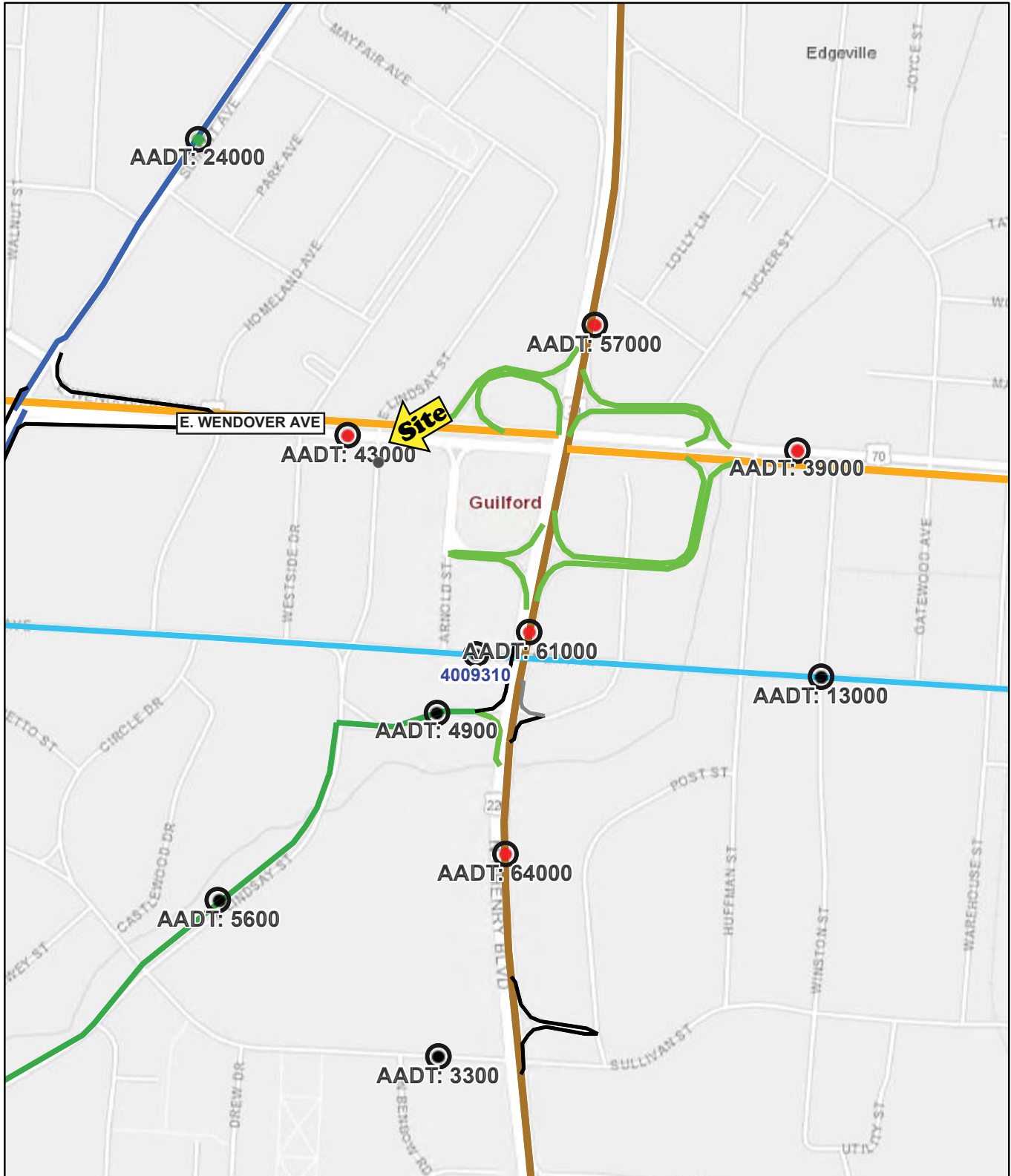
3,300 SF +/-



Contact:

JJ Joubran, CCIM
Joubran Commercial Properties
(336) 270-9775
JJ@JoubranCommercial.com
www.JoubranCommercial.com

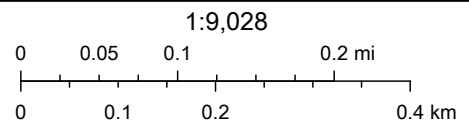
NCDOT Annual Average Daily Traffic (2017)



12/10/2019, 3:25:49 PM

NCDOT_AADT_Stations

- US Routes
- Secondary Routes
- Non-System Routes
- Traffic_Analysis_PTC



NCDOT GIS Unit, Esri, HERE, Garmin, (c) OpenStreetMap contributors, and the GIS user community