

# OFFICE/INDUSTRIAL CONDO FOR SALE

±2,490 SF AVAILABLE

236 W. Orange Show Road, Unit 111, San Bernardino, CA 92408



## PROPERTY HIGHLIGHTS

- ±2,490 SF Office/Industrial Condo
- Frontage on Busy Orange Show Road
- ±907 SF Office (Verify)
- 1 Ground Level Door
- .45 GPM /3,000 SF Fire Sprinkler System (Verify)
- 200 Amps, 120/208 Volts of Power
- 16'-18' Clear Height in Warehouse
- Great Access to I-215 and I-10 Freeways



**ALEXEY ZABOLOTSKIKH**

951.276.3606 | DRE#: 01428540

ALEX@LEERIVERSIDE.COM

**CRAIG YOCUM**

951.276.3625 | DRE#: 00942165

CYOCUM@LEERIVERSIDE.COM

**TRENT KIMSEY**

951.276.3649 | DRE#: 02066678

TKIMSEY@LEERIVERSIDE.COM

3240 Mission Inn Avenue, Riverside, CA 92507 | 951.276.3600 | Corporate DRE#: 01048055 | [www.lee-associates.com](http://www.lee-associates.com)

No warranty or representation has been made to the accuracy of the foregoing information. Terms of sale or lease and availability are subject to change or withdrawal without notice. Lee & Associates Commercial Real Estate Services, Inc. - Riverside.

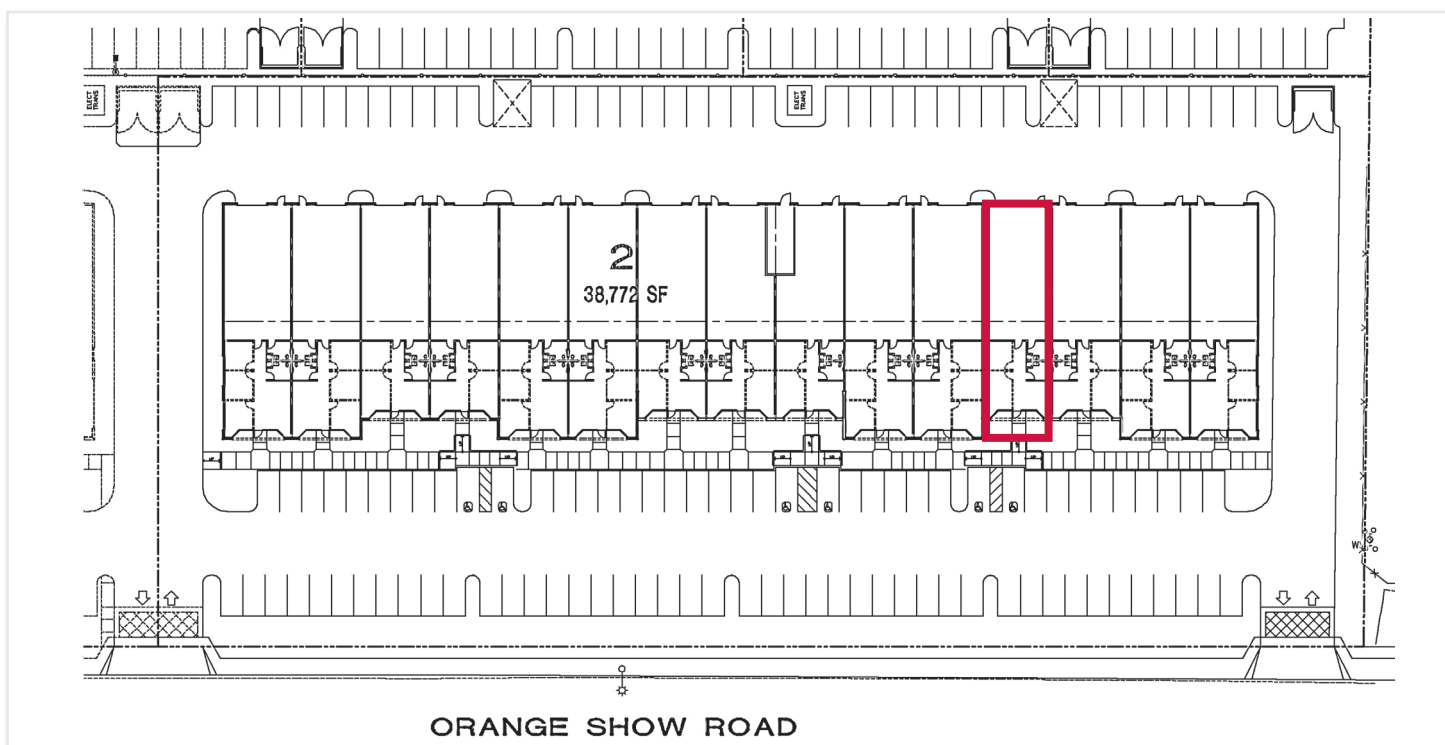
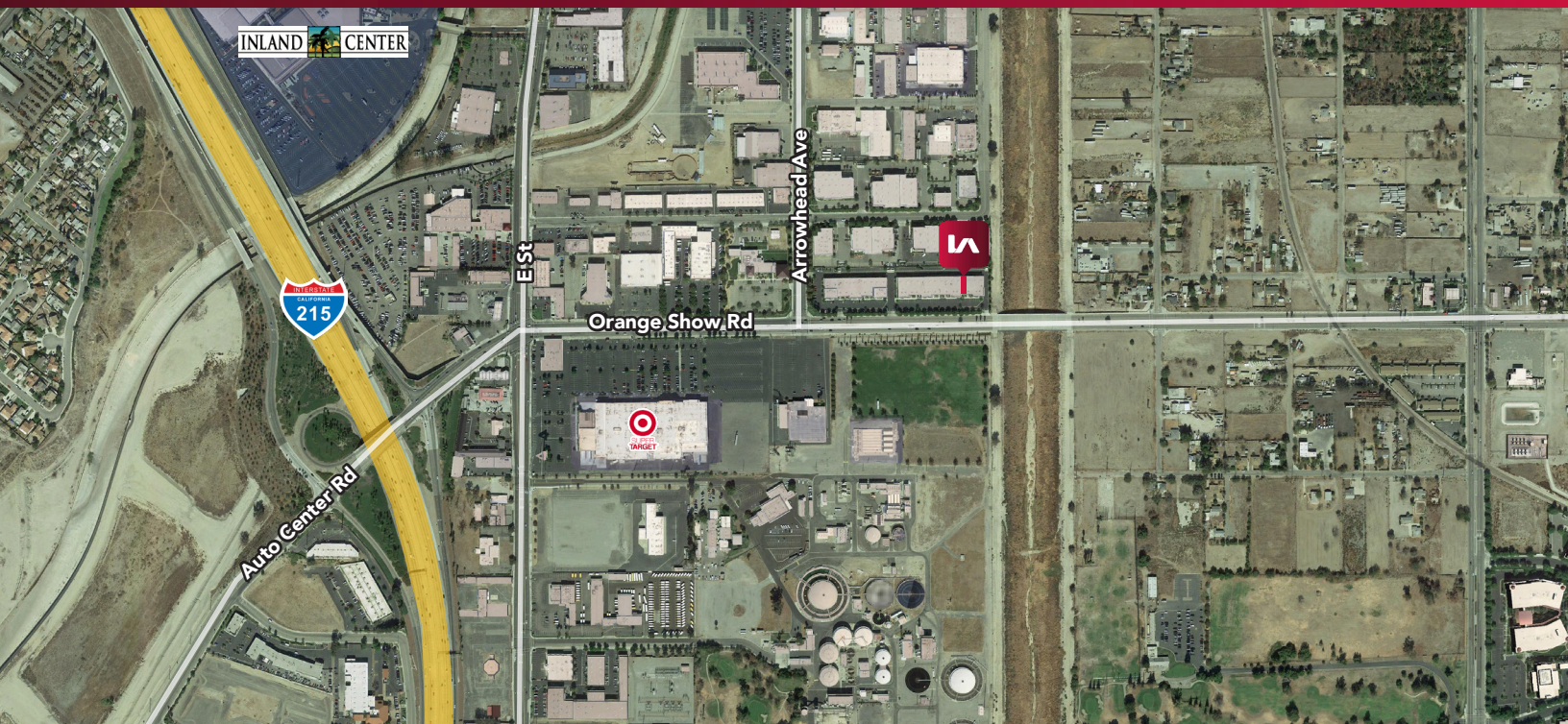


# OFFICE/INDUSTRIAL CONDO FOR SALE

## ±2,490 SF AVAILABLE

236 W. Orange Show Road, Unit 111, San Bernardino, CA 92408

**LEE & ASSOCIATES**  
COMMERCIAL REAL ESTATE SERVICES



**LEE & ASSOCIATES**  
COMMERCIAL REAL ESTATE SERVICES  
Corporate DRE#: 01048055  
www.lee-associates.com

**ALEXEY ZABOLOTSKIKH**  
951.276.3606 | DRE#: 01428540  
ALEX@LEERIVERSIDE.COM

**CRAIG YOCUM**  
951.276.3625 | DRE#: 00942165  
CYOCUM@LEERIVERSIDE.COM

**TRENT KIMSEY**  
951.276.3649 | DRE#: 02066678  
TKIMSEY@LEERIVERSIDE.COM

3240 Mission Inn Avenue, Riverside, CA 92507 | 951.276.3600 | Corporate DRE#: 01048055 | www.lee-associates.com

No warranty or representation has been made to the accuracy of the foregoing information. Terms of sale or lease and availability are subject to change or withdrawal without notice. Lee & Associates Commercial Real Estate Services, Inc. - Riverside.