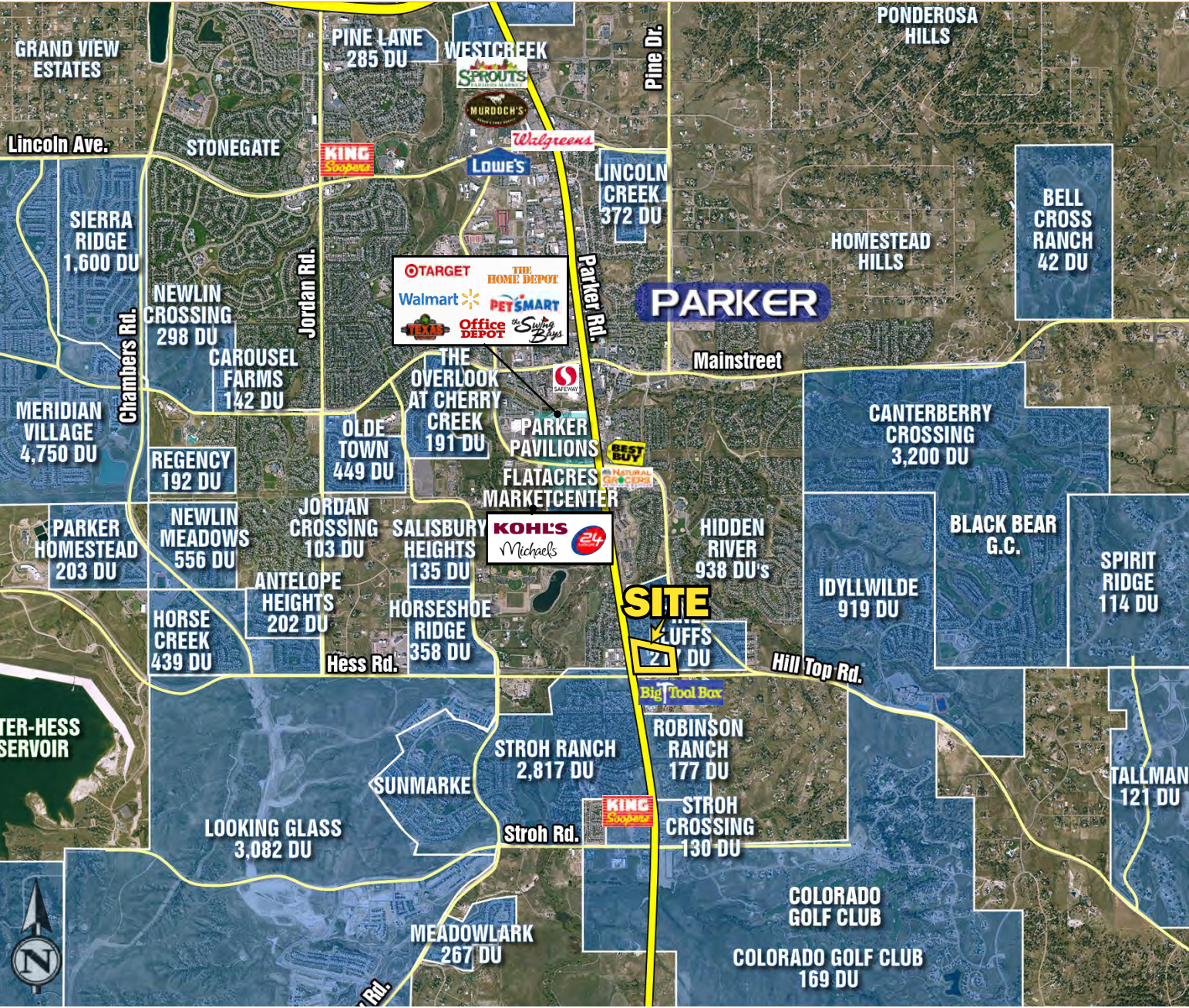


TRADE AREA DEMOGRAPHICS				TRAFFIC COUNTS	
	1 Mile	3 Mile	5 Mile		
Population	9,131	60,538	112,306	On Parker Road north of Hess Road	45,298 Cars/day
Average HH Income	\$187,203	\$183,462	\$190,150	On Parker Road south of Hess Road	44,107 Cars/day
Businesses	390	2,444	4,328	On Hess Road east of Parker Road	19,638 Cars/day
Employees	1,821	13,885	23,414	On Hess Road west of Parker Road	22,433 Cars/day
Source: Applied Geographic Solutions, 2025 Estimates				Source: CDOT 2025	



FOR MORE INFORMATION, PLEASE CONTACT



**KRISTEN GRANDA**  
303.577.9964  
kristen.granda@dhlb.com

**ROBIN NICHOLSON**  
303.577.9971  
robin.nicholson@dhlb.com

CLICK HERE FOR  
BROKER DISCLOSURE

# PINE BLUFFS PLAZA

NEC OF PARKER ROAD & HESS ROAD - PARKER, CO



- In-line space for lease and commercial pads available for ground lease.
- 2,500 SF space available for lease.
- Seeking dental, vision and other retail users.
- New retail development with high traffic counts (over 67,000 cars per day).
- Exceptional trade area demographics with an Average Household Income over \$183,000 within a 3-mile radius.

**KOELBEL**

**KRISTEN GRANDA**  
303.577.9964  
kristen.granda@dhlb.com

**ROBIN NICHOLSON**  
303.577.9971  
robin.nicholson@dhlb.com







# PINE BLUFFS PLAZA

NEC OF PARKER ROAD & HESS ROAD - PARKER, COLORADO



Site plan is approximate and are subject to change without prior notice.

The information contained herein was obtained from sources deemed reliable. David, Hicks & Lampert Brokerage, LLC makes no warrant and assume no liabilities whatsoever for the accuracy or use of this data.

