

FOR LEASE | APPROX. 3,300 SF



Property Highlights

- Excellent trade area servicing residential as well as High Pointe Business Park.
- Fresenius Dialysis located next door.
- One large private room.
- Two restrooms with showers.
- Four exterior doors, two back doors.
- Electrical outlets throughout space.
- Sprinklers.
- Air conditioning.
- Monument signage available.



CONTACT INFORMATION:

Eileen Doody

Senior Vice President Healthcare Services

949.390.5506 | CalBRE 00965140

Eileen.Doody@madisonmarquette.com

The information contained herein has been gathered from sources deemed reliable. Though we have no reason to doubt the accuracy, we do not guarantee it.

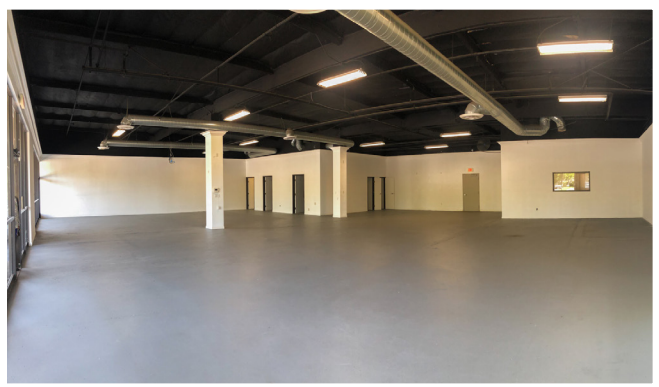
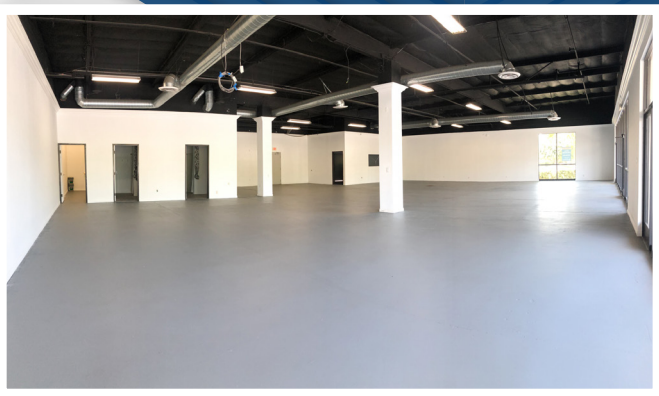
Medical Office Space

23681 VIA LINDA | MISSION VIEJO, CA 92691



MadisonMarquette
A Capital Guidance Company

FOR LEASE | APPROX. 3,300 SF



CONTACT INFORMATION:

Eileen Doody

Senior Vice President Healthcare Services
949.390.5506 | CalBRE 00965140
Eileen.Doody@madisonmarquette.com

The information contained herein has been gathered from sources deemed reliable.
Though we have no reason to doubt the accuracy, we do not guarantee it.

2020 Main Street | Suite 800 | Irvine, CA 92614 | P. 949.390.5506 | C. 714.803.5560

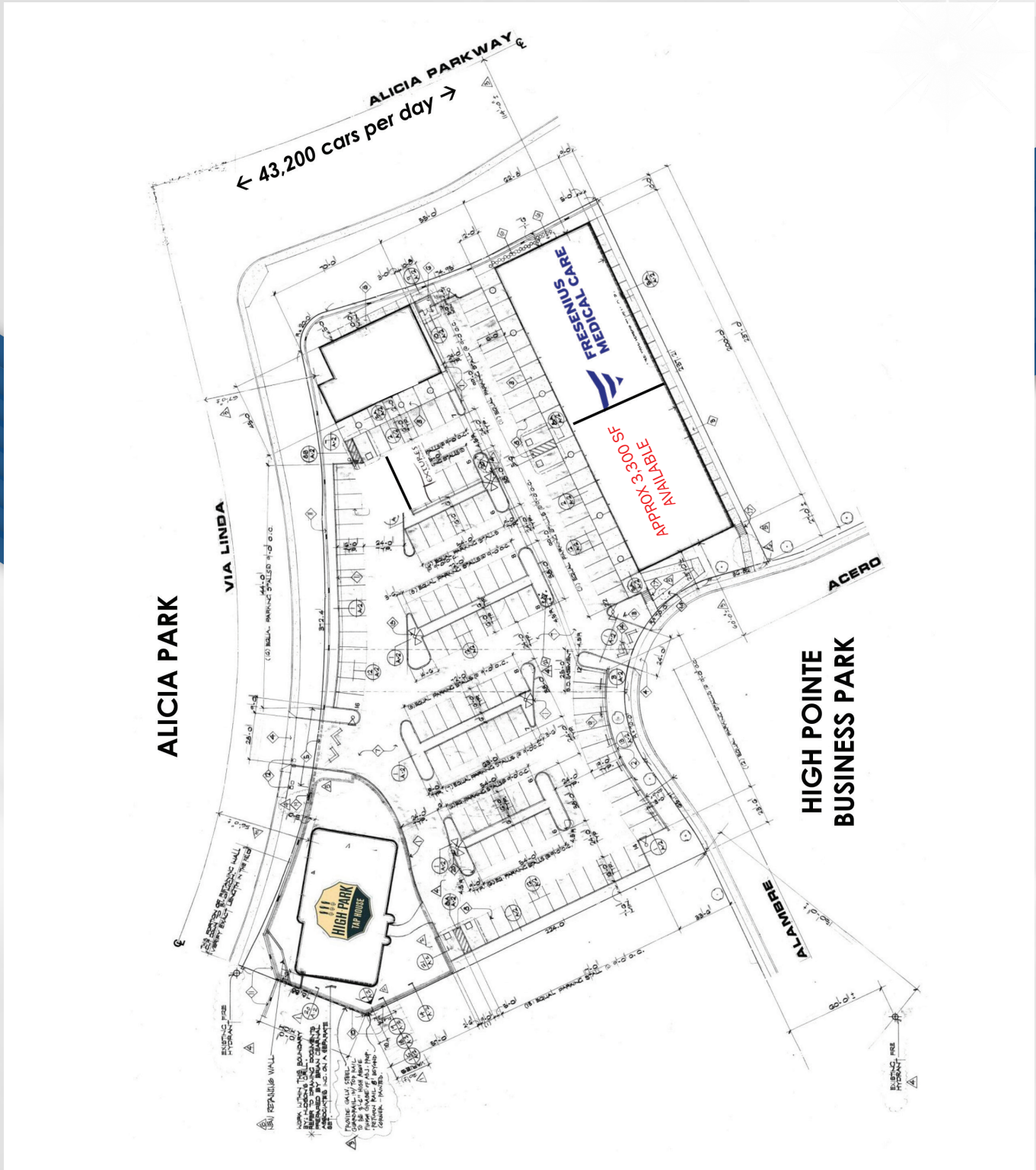
madisonmarquette.com | CalBRE 01522492

Medical Office Space



MadisonMarquette
A Capital Guidance Company

23681 VIA LINDA | MISSION VIEJO, CA 92691



The information contained herein has been gathered from sources deemed reliable. Though we have no reason to doubt the accuracy, we do not guarantee it.

2020 Main Street | Suite 800 | Irvine, CA 92614 | P. 949.390.5506 | C. 714.803.5560

madisonmarquette.com | CalBRE 01522492