



**MOUNTAIN WEST**  
COMMERCIAL REAL ESTATE






# THANKSGIVING POINT OFFICE SPACE

2972 WEST MAPLE LOOP DRIVE • LEHI • UTAH • 84043

## FOR LEASE

### PROPERTY SPECS

- Class A Executive Offices
- Shared Conference Room
- Gigabit Internet included
- Located in the highly sought after Thanksgiving Business Park, one block from the I-15/SR 93 Interchange
- Within walking distance to several food establishments plus the FrontRunner/Bus Station
- Lease Rate: \$25.00/SF/Full Service Reduced!  
\$20.00/SF/Full Service

			
1 MILE	<b>8,048</b> 2020 EST. POPULATION	<b>2,323</b> 2020 EST. HOUSEHOLDS	<b>\$95,400</b> 2020 EST. MEDIAN HH INCOME
3 MILE	<b>43,289</b> 2020 EST. POPULATION	<b>11,793</b> 2020 EST. HOUSEHOLDS	<b>\$96,309</b> 2020 EST. MEDIAN HH INCOME
5 MILE	<b>122,237</b> 2020 EST. POPULATION	<b>32,889</b> 2020 EST. HOUSEHOLDS	<b>\$102,194</b> 2020 EST. MEDIAN HH INCOME

### CONTACT:

#### MARY STREET, CCIM

mstreet@mtwest.com  
direct 385.233.9415  
[View Profile](#)

#### BILL STREET

bstreet@mtwest.com  
direct 385.233.9416  
[View Profile](#)

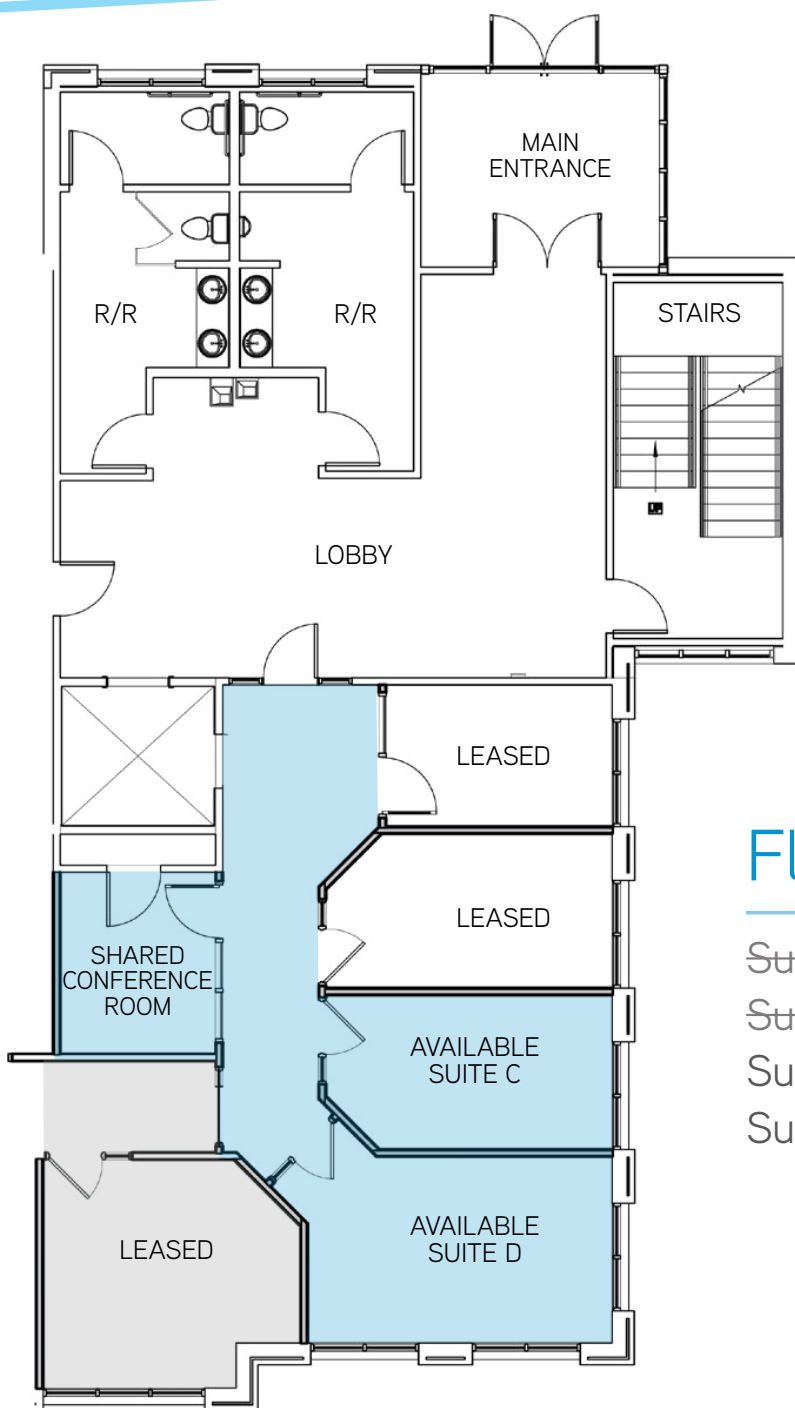
#### NIC WOODS

nwoods@mtwest.com  
direct 385.233.9412  
[View Profile](#)



RETAIL - INVESTMENT - INDUSTRIAL - LAND - OFFICE - URBAN

# THANKSGIVING POINT OFFICE SPACE



## Floor Plan

- ~~Suite A: 253 RSF~~ Leased
- ~~Suite B: 286 RSF~~ Leased
- Suite C: 286 RSF
- Suite D: 339 RSF

### CONTACT:

#### MARY STREET, CCIM

mstreet@mtnwest.com  
direct 385.233.9415  
[View Profile](#)

#### BILL STREET

bstreet@mtnwest.com  
direct 385.233.9416  
[View Profile](#)

#### NIC WOODS

nwoods@mtnwest.com  
direct 385.233.9412  
[View Profile](#)

MW

