

1ST FLOOR & RETAIL OPPORTUNITY

850 Morrison Drive, Charleston, SC 29403



MORRISON

CHARLESTON

YARD

S. CAROLINA

BRIAN CONNOLLY

brian.connolly@jll.com

+1 202 316 4846

BROOKE ADEE

brooke.eyrich@jll.com

+1 301 525 3237

@ brookeadee_



ONLY TWO VACANCIES LEFT IN 12 STORY BUILDING

THE PROJECT:



12 story building



Ground Floor Availability
Suite 102: 2,866 SF
Suite 103: 2,339 SF



MODERN, MOMENTOUS, MORRISON YARD.

Morrison Yard is a prominent new development located at 850 Morrison Drive in Charleston, South Carolina. Welcoming commuters to the Upper Peninsula, the property is situated at the base of the Arthur Ravenel Jr. Bridge. Breathtaking waterfront views and ease of access make Morrison Yard a standout in the area.



A LIVELY, CONVENIENT LOCATION.

Charleston's best amenities
all within 1 mile

Food & Beverage

Retails

Gyms

Hotels



North Charleston

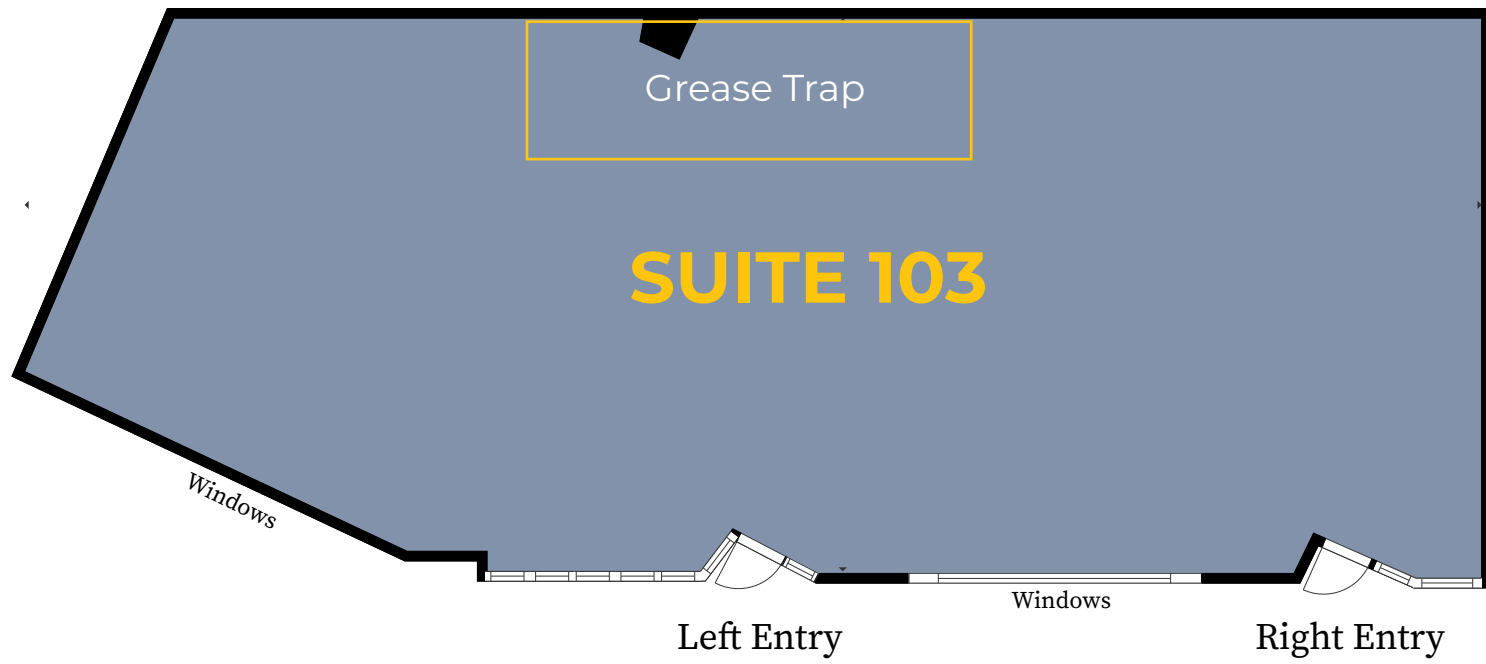
Mount Pleasant

West Ashley



SUITE 103

SUITE 103
2,339 s.f.



Morrison Drive - 19,700 vehicles per day



CLICK ON THE LINK FOR
VIRTUAL WALK-THROUGH



SUITE 102

CLICK ON THE LINK FOR
VIRTUAL WALK-THROUGH

Highlights



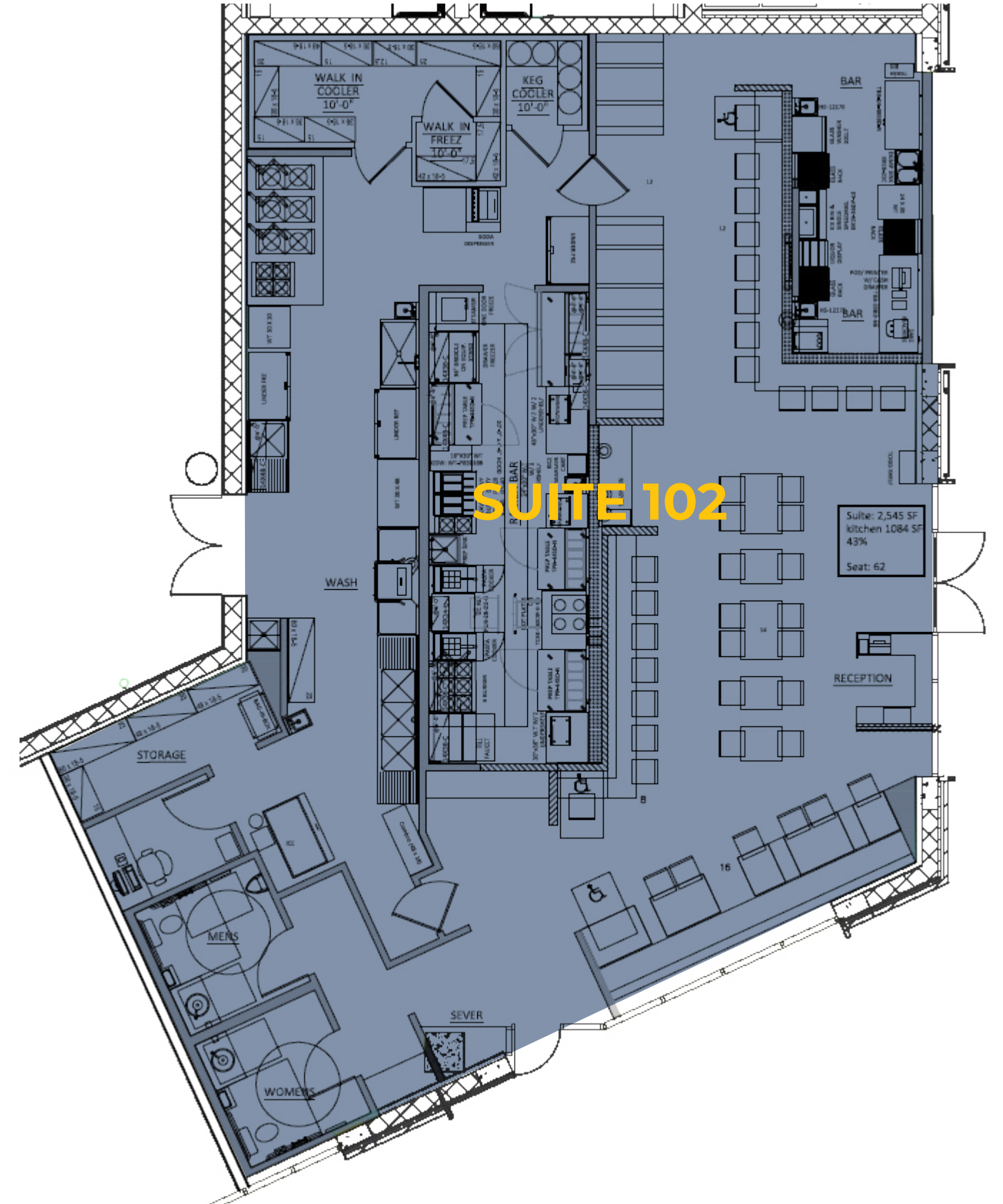
2,886 s.f.



FF&E Included



Vacant and move-in ready





FOR LEASING INQUIRIES CONTACT:

BRIAN CONNOLLY
brian.connolly@jll.com
+1 202 316 4846

BROOKE ADEE
brooke.eyrich@jll.com
+1 301 525 3237

📷 brookeadee__



MORRISONYARDOFFICE.COM
📷 Follow us @MorrisonYardOffice