

WEST DELAWARE

OFFICE FOR LEASE

241 PADDOCK COURT, DELAWARE, OH 43015



LAURAH HALLOCK ADVISOR

MOBILE 614.705.9571 | DIRECT 614.334.7841
LHALLOCK@EQUITY.NET



PROPERTY HIGHLIGHTS

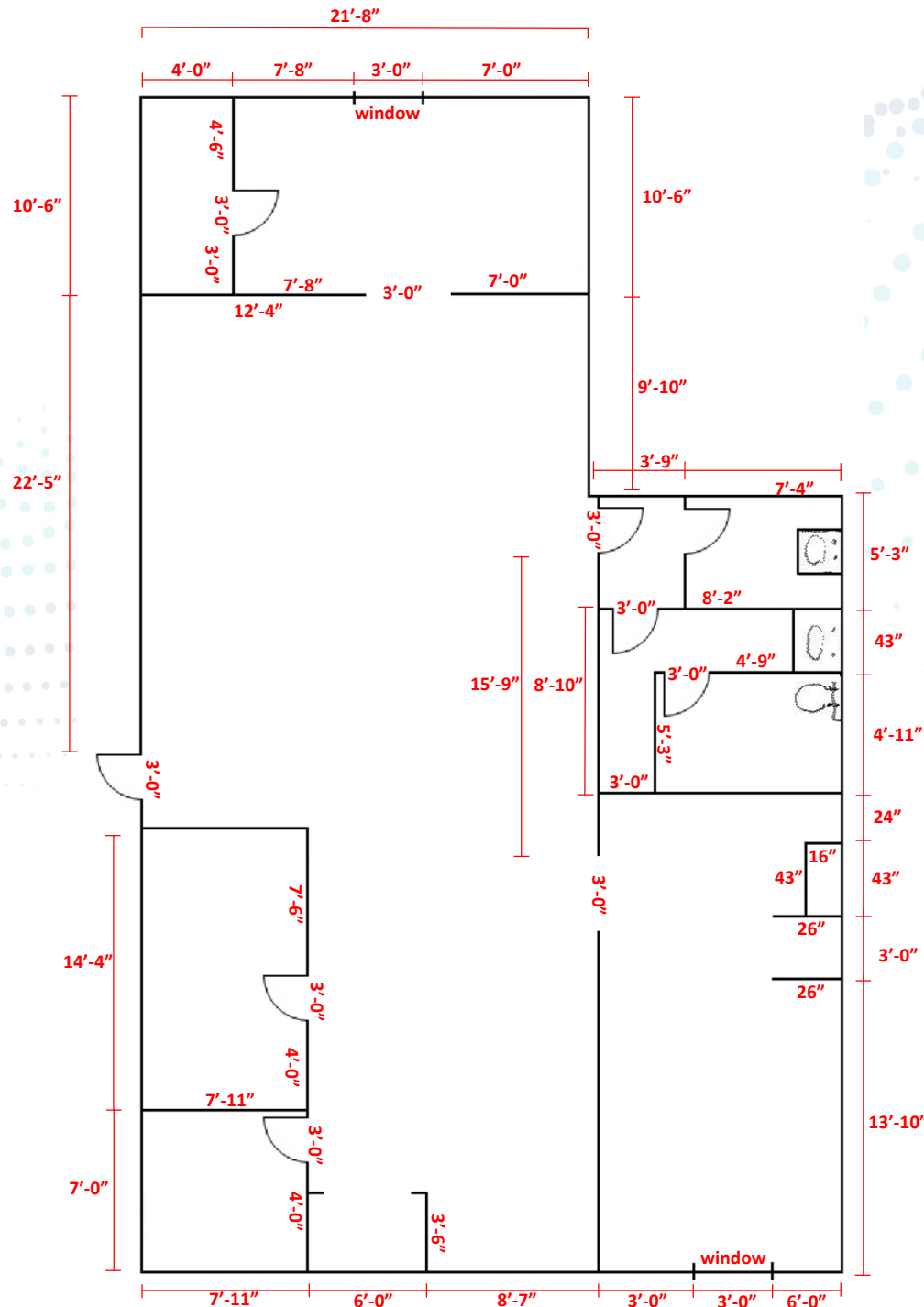
WEST DELAWARE

OFFICE FOR LEASE
241 PADDOCK COURT, DELAWARE, OH 43015

- Suite C: +/- 2,694 SF with private entrance
- Open floor plan also includes private offices, common areas, and a kitchenette
- Upgrades throughout
- Co-tenant with Delaware Eye Center
- Monument signage available
- Parking ratio: 4.32 per 1,000 SF
- Lease rate: \$3,750/month modified gross



SPACE PLAN



All measurements are approximate

All ceilings: 7'-10"

SIGNAGE



equity | brokerage

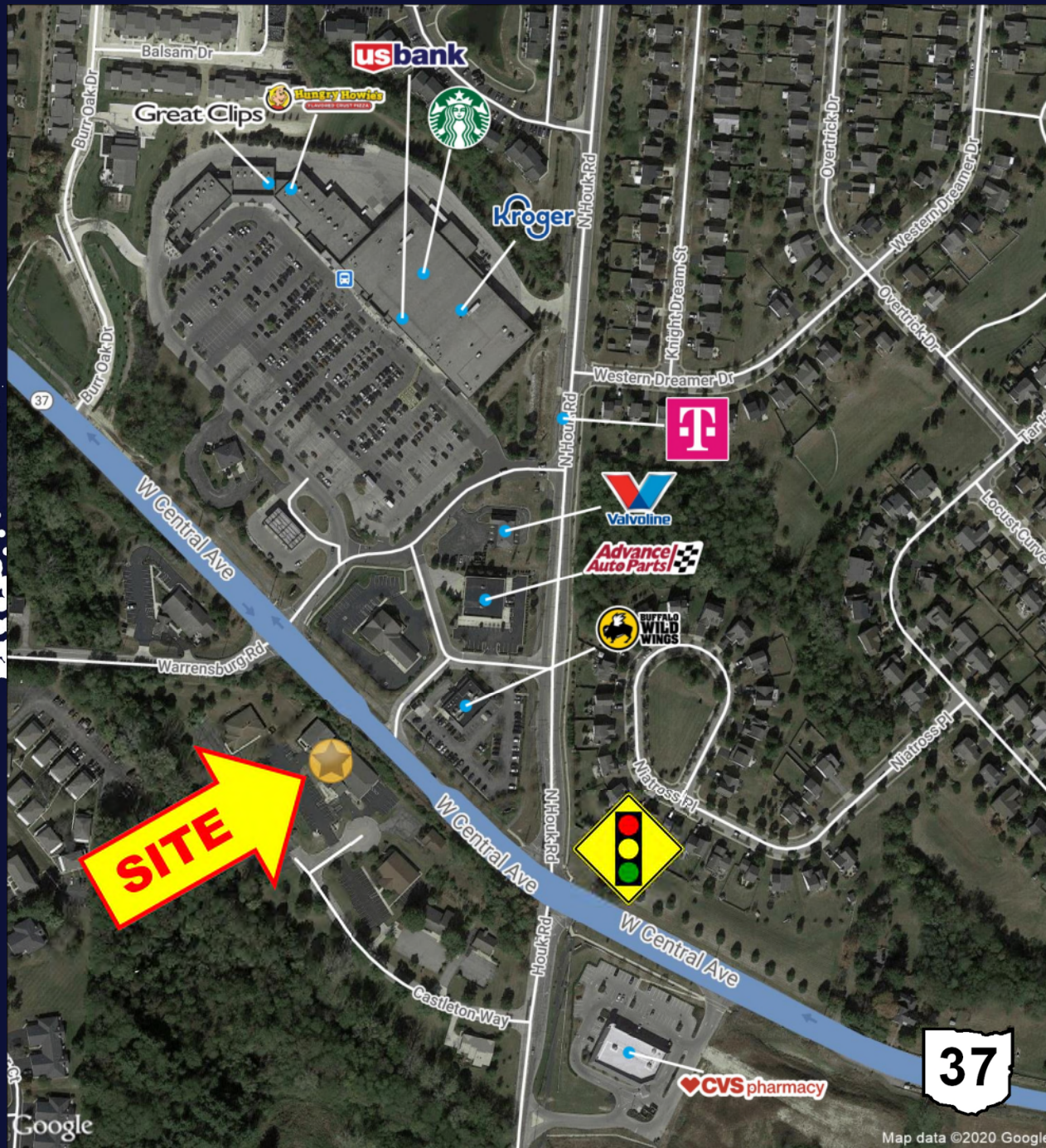
www.equity.net

The information contained herein has been obtained from the property owner or other sources that we deem reliable. Although we have no reason to doubt its accuracy, no representation or warranty is made regarding the information, and the property is offered "as is". The submission may be modified or withdrawn at any time by the property owner.

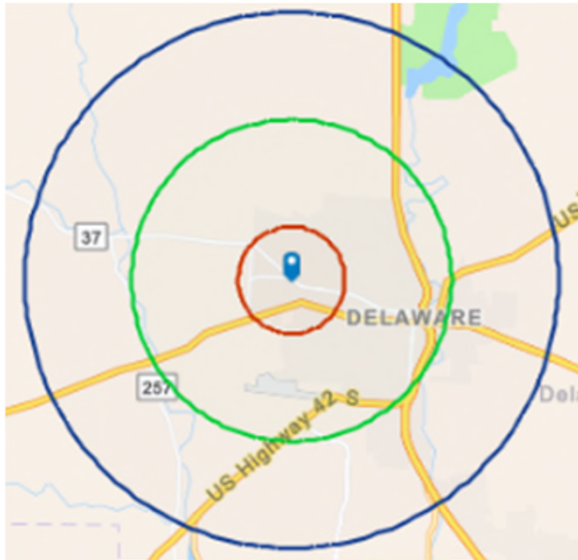
PHOTOS



AERIAL



1-MILE RADIUS DEMOS



KEY FACTS

10,904
Population

2.5
Average
Household Size

38.7
Median Age

\$88,945
Median Household Income

BUSINESS

159

Total Businesses

2,116

Total Employees

EDUCATION

3%

No High School
Diploma

22%

High School
Graduate

27%

Some
College

49%

Bachelor's/Grad/Prof
Degree

INCOME



\$45,185
Per Capita
Income



\$88,945
Median
Household
Income



\$115,215
Average
Household
Income

EMPLOYMENT



67.3
White
Collar %



17.1
Blue
Collar %

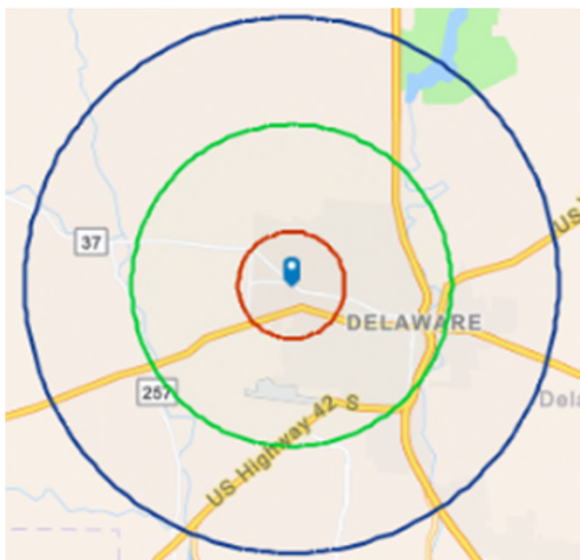


15.7
Services
%

equity | brokerage

The information contained herein has been obtained from the property owner or other sources that we deem reliable. Although we have no reason to doubt its accuracy, no representation or warranty is made regarding the information, and the property is offered "as is." The submission may be modified or withdrawn at any time by the property owner.

3-MILE RADIUS DEMOS



KEY FACTS

31,547
Population



Average
Household Size



Median Age

\$83,551

Median Household Income

BUSINESS



Total Businesses

1,122



Total Employees

13,086

EDUCATION



4%

No High School
Diploma



27%

High School
Graduate



26%

Some
College



43%

Bachelor's/Grad/Prof
Degree

INCOME



\$43,188

Per Capita
Income



\$83,551

Median
Household
Income



\$109,458

Average
Household
Income

EMPLOYMENT



65.7

White
Collar %



19.0

Blue
Collar %



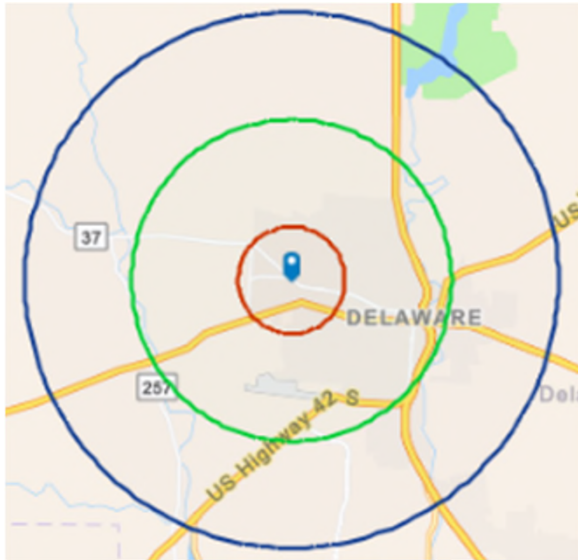
15.3

Services
%

equity | brokerage

The information contained herein has been obtained from the property owner or other sources that we deem reliable. Although we have no reason to doubt its accuracy, no representation or warranty is made regarding the information, and the property is offered "as is." The submission may be modified or withdrawn at any time by the property owner.

5-MILE RADIUS DEMOS



KEY FACTS

46,216
Population



Average
Household Size



Median Age

\$85,568
Median Household Income

BUSINESS



1,470

Total Businesses



17,236

Total Employees

EDUCATION



5%

No High School
Diploma



27%

High School
Graduate



25%

Some
College



44%

Bachelor's/Grad/Prof
Degree

INCOME



\$44,682

Per Capita
Income



\$85,568

Median
Household
Income



\$113,001

Average
Household
Income

EMPLOYMENT



65.9

White
Collar %



18.9

Blue
Collar %



15.2

Services
%

equity | brokerage

The information contained herein has been obtained from the property owner or other sources that we deem reliable. Although we have no reason to doubt its accuracy, no representation or warranty is made regarding the information, and the property is offered "as is." The submission may be modified or withdrawn at any time by the property owner.