



Progress Point

2608 Frontage Road
New Iberia, LA 70560



SITE INFORMATION

ACRES AVAILABLE:

45.3 Acres

PROPERTY TYPE:

Manufacturing - Light Industrial

TERRAIN:

Flat

SUB DIVIDABLE:

Yes

PRIOR/CURRENT USE:

Agricultural

OWNER:

Iberia Economic
Development Authority

NEAREST MSA:

Lafayette
Population: 484,974
Distance: 0 miles

COORDINATES:

30.005474, -91.878303



UTILITIES

ELECTRICITY:

Cleco

NATURAL GAS:

EnLink Midstream

WATER:

Louisiana Water Company

SEWER:

Iberia Parish Sererwage District #1

TELECOM:

AT&T

FIBER OPTIC:

AT&T

TRANSPORTATION LOGISTICS

INTERSTATE:

I-10
Distance: 21.1 miles

HIGHWAY:

US-90
Distance: 0.7 mile

RAIL:

BNFS Railroad
Distance: 2.4 miles

AIRPORT:

Acadiana Regional Airport
Distance: 3.4 miles

PORT:

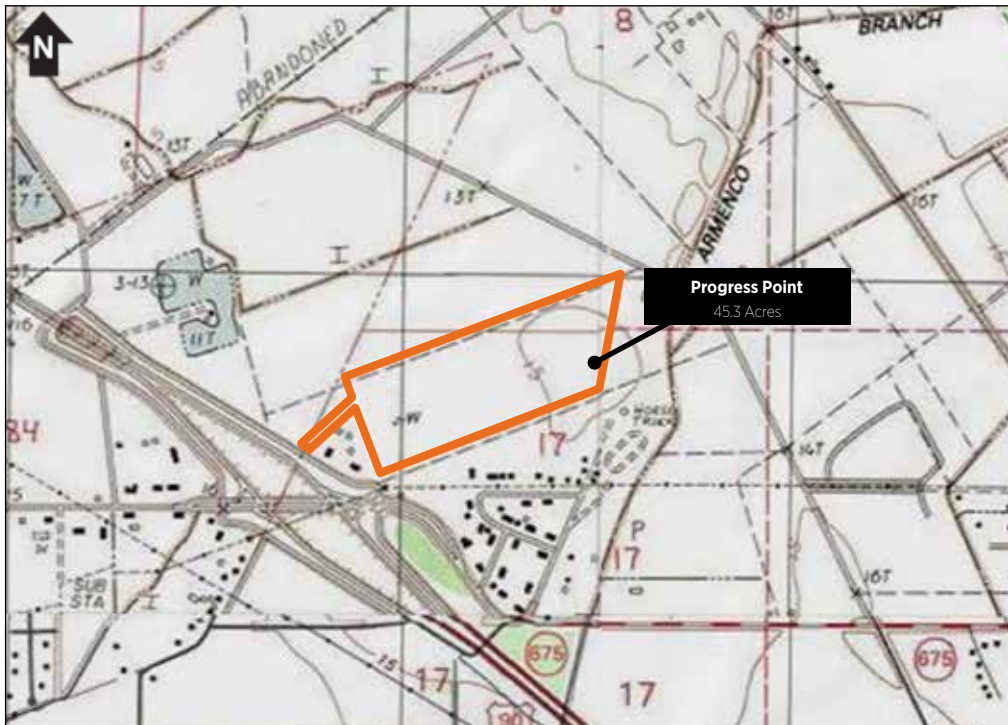
Port of Iberia
Distance: 5.7 miles



Site Located in
Iberia Parish

Progress Point

2608 Frontage Road
New Iberia, LA 70560



FIND OUT MORE: OpportunityLouisiana.com
800.450.8115