



# TARGET OUTLOT NEW DEVELOPMENT

For Lease

3100 Owen Road

Fenton, Michigan 48430

1,200 SF & Up  
Available

Drive-Thru

Mid-Box Available

Delivery 2018

Rare Target Outlot

Agent Contact

Ryan Duff

[Rduff@keystonecres.com](mailto:Rduff@keystonecres.com)

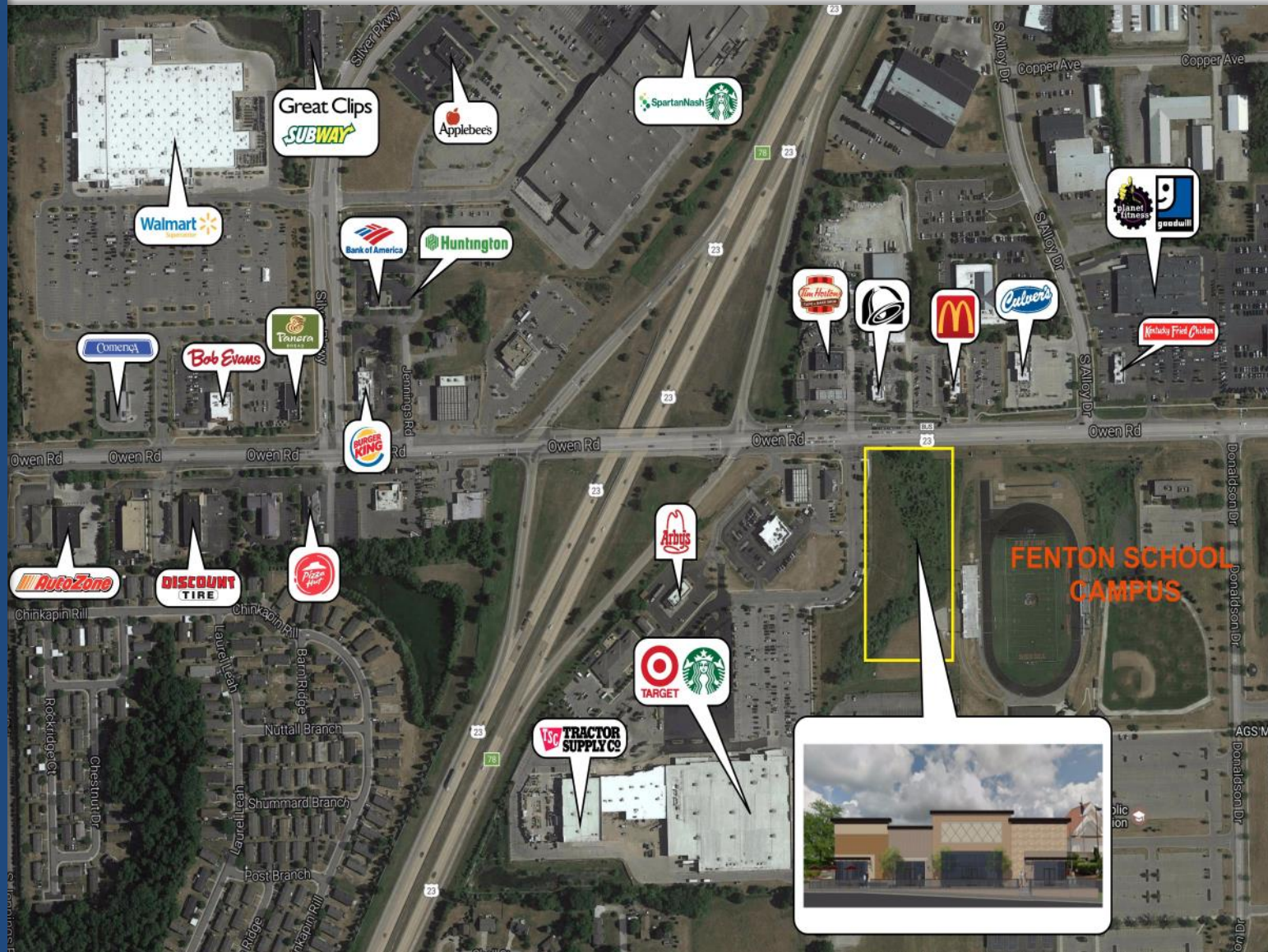
Extension 105

31000 Northwestern Highway- Suite 200

Farmington Hills Michigan 48334

(248) 356-8000

[www.keystonecres.com](http://www.keystonecres.com)





# TARGET OUTLOT NEW DEVELOPMENT

## Outlot Aerial

3100 Owen Road

Fenton, Michigan 48430

### Property Highlights:

- Lighted Intersection
- Adjacent to Campus of Fenton Schools
- National Retail Corridor



31000 Northwestern Highway– Suite 200  
Farmington Hills Michigan 48334

(248) 356-8000  
[www.keystonecres.com](http://www.keystonecres.com)





# Trade Aerial

## Property Highlights:



### Cross Roads & Traffic

- Owen Rd. - 9,569 VPD
- US-23 - 51,700 VPD



### 2016 Est. Total Businesses

- 1,561 in 5 Mile Radius



### 2016 Est. Total Employees

- 12,155 in 5 Mile Radius



### 2016 Trade Area Demographics

Radius	Population	Household Income
1 Mile	3,649	\$78,621
3 Miles	23,083	\$76,163
5 Miles	41,012	\$81,664

# TARGET OUTLOT NEW DEVELOPMENT

## 3100 Owen Road Fenton, Michigan 48430





# Sample Elevations

# TARGET OUTLOT NEW DEVELOPMENT

3100 Owen Road  
Fenton, Michigan 48430



31000 Northwestern Highway– Suite 200

Farmington Hills Michigan 48334

(248) 356-8000

[www.keystonecres.com](http://www.keystonecres.com)





# TARGET OUTLOT NEW DEVELOPMENT

## Preliminary Site

- 1,200 SF - 20,000 SF Available
  - Depths: 80'
  - Drive-Thru
- Parking Ratio 10/1,000

### Agent Contact

Ryan Duff

[Rduff@keystonecres.com](mailto:Rduff@keystonecres.com)

Extension 105

31000 Northwestern Highway- Suite 200

Farmington Hills Michigan 48334

(248) 356-8000

[www.keystonecres.com](http://www.keystonecres.com)

