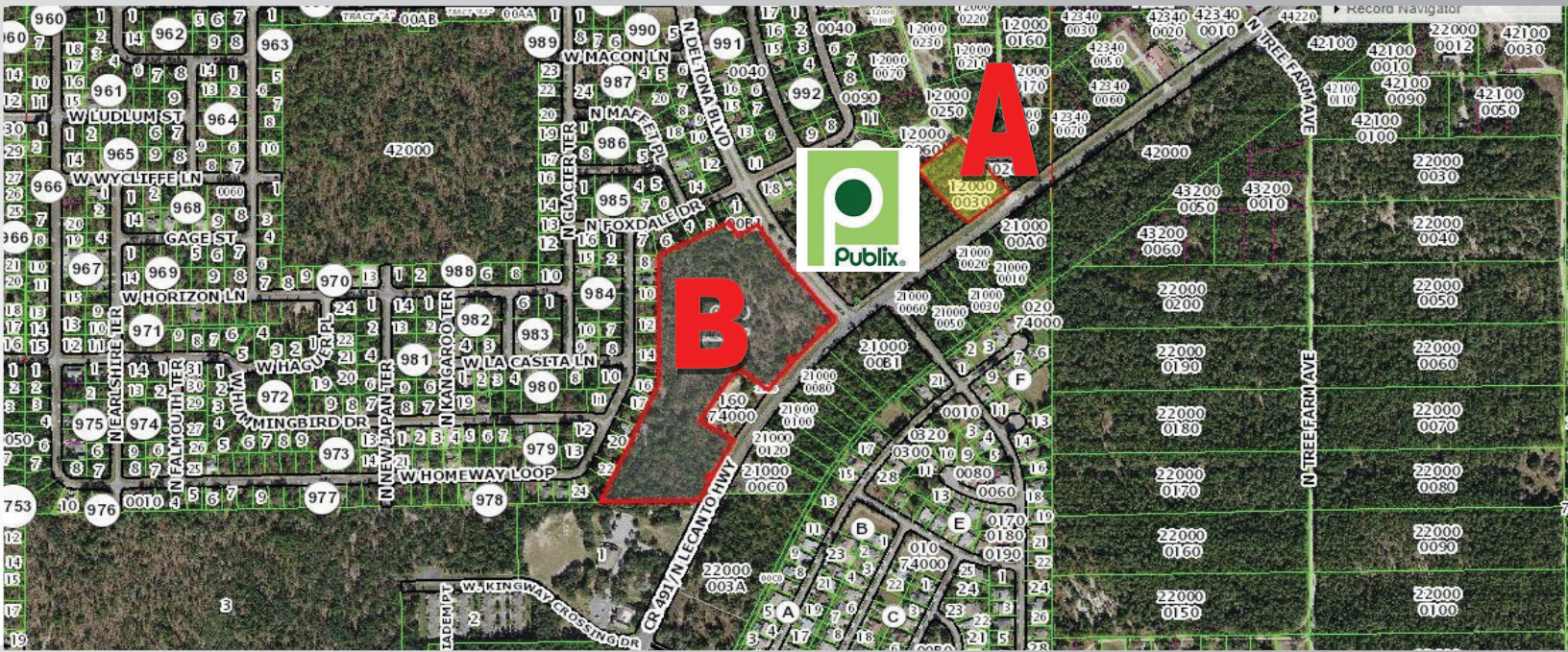


# LAND FOR SALE-(A)

6592 N. KENDRICK PATH DUNNELLON, FL 34434

www.harrisandcompany.org



## CORNER COMMERCIAL ACREAGE Offers Considered

- Parcel "A"
- 2.5 Vacant Acres Alt Key: 233081
- Corner of Lecanto Highway & Kendrick Path
- Citrus Springs/ Dunnellon Florida
- Rapidly developing into the next boom area!
- Deltona Corporation has major holdings in development stage
- The site is contiguous to a future Publix, 20-acre development
- 270' on Lecanto Hwy. and 400' on Kendrick Path
- Zoned Commercial

For more information please contact:

Marshall S. Harris

Licensed Real Estate Broker

Harris & Company

727.797.0888 Office

[Marshallharris@harrisandcompany.net](mailto:Marshallharris@harrisandcompany.net)



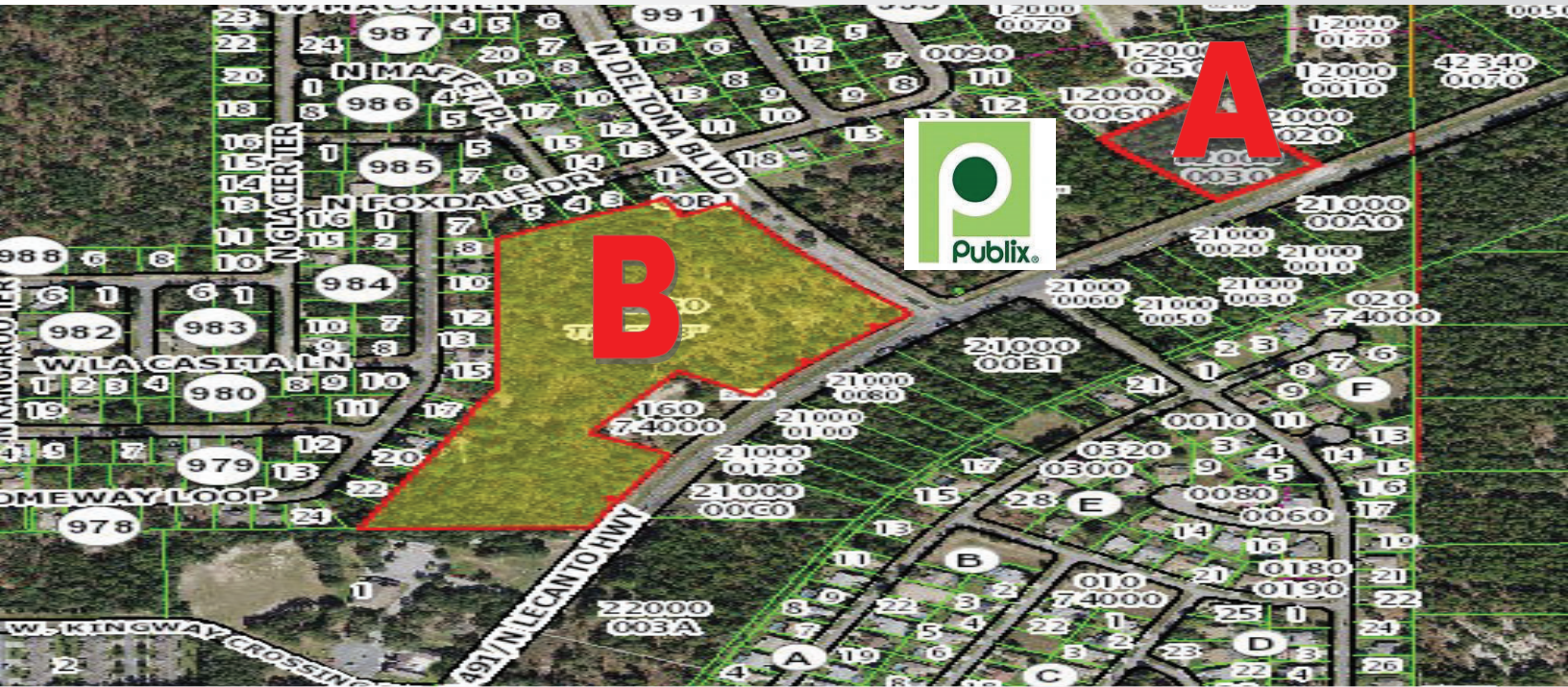
HARRIS & COMPANY | 3005 S.R. 590, SUITE 200 CLEARWATER, FL 33759

This information contained herein was obtained from sources deemed to be reliable; however Harris & Company makes no guarantees, warranties or representations as to the completeness or accuracy thereof.

# LAND FOR SALE-(B)

6500 N. DELTONA BLVD. CITRUS SPRINGS, FL 34434

www.harrisandcompany.org



## CORNER COMMERCIAL ACREAGE

### Offers Considered

- Parcel "B"
- 19.89 Vacant Acres Alt Key: 233081
- Corner of Lecanto Highway & N. Deltona Blvd.
- Citrus Springs/ Dunnellon Florida
- Rapidly developing into the next boom area!
- Deltona Corporation has major holdings in development stage
- The commercial site is contiguous to a future Publix, 20-acre development
- Parcel is irregular with 1,300 front ft. on Lecanto Hwy. and 762 ft. on N. Deltona Blvd.

For more information please contact:

**Marshall S. Harris**

Licensed Real Estate Broker

**Harris & Company**

727.797.0888 Office

[Marshallharris@harrisandcompany.net](mailto:Marshallharris@harrisandcompany.net)



HARRIS & COMPANY | 3005 S.R. 590, SUITE 200 CLEARWATER, FL 33759

This information contained herein was obtained from sources deemed to be reliable; however Harris & Company makes no guarantees, warranties or representations as to the completeness or accuracy thereof.