



Prime Office Space Available for Lease

943 Post Road East
Westport, Connecticut
Fairfield County



Location and Building

Ideally situated just off Exit 18 of I-95, with good access to Merritt Parkway. Close to shopping, fitness clubs, banks, restaurants and Starbucks.

The property was acquired in 2008 and has been fully renovated by the Owner/Developer. Owner and Manager are onsite.

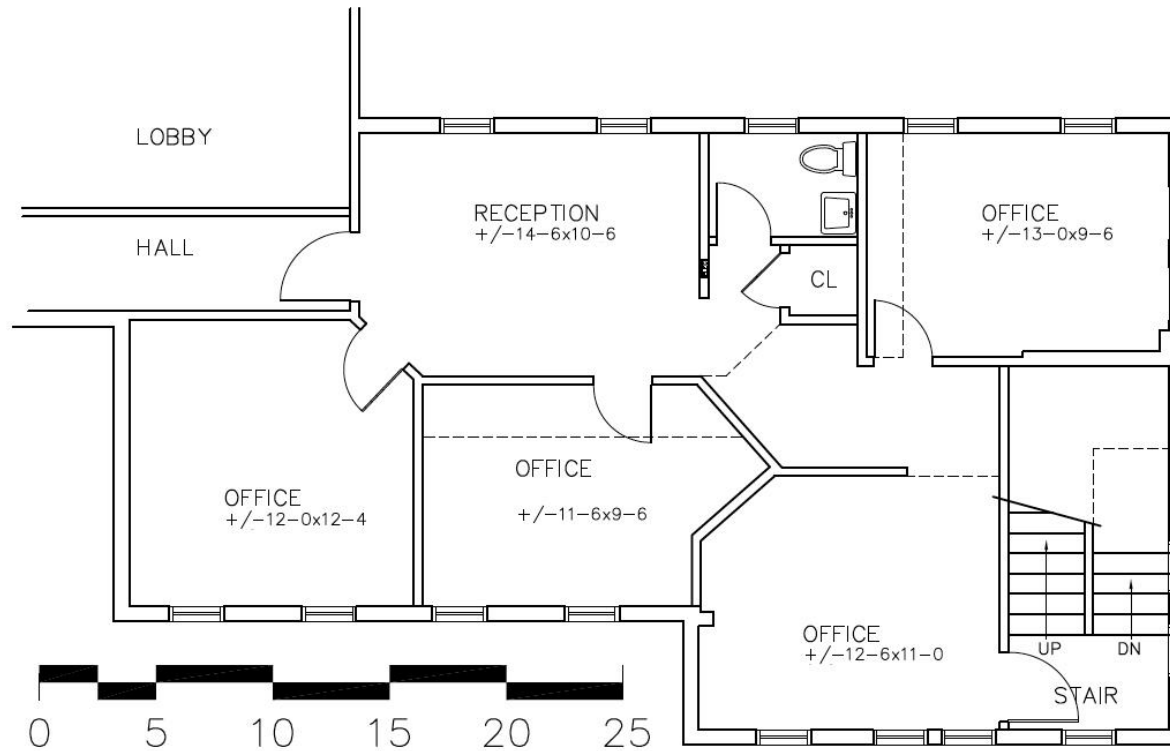
The logo consists of the letters 'H' and 'K' in a blue, serif font, centered within a white square. The square is set against a dark blue background that spans the bottom of the slide.

HK

About the Space

- Building:** A 5,200 SF+/- two-story building.
- Available Space:** 1,100 RSF+/- Second Floor
- Asking Rent:** \$28 SF + Utilities
- Occupancy:** January 2017
- Parking:** 4/1,000 surface parking
- Comments:** Great signage on Post Road (US-1). Storage space available at lower level. Ideal for professional users or small firm. Building allows easy expansion or downsizing of tenant space.

Floor Plan



Second Floor Tenant Plan

943 Post Rd E, Westport, CT

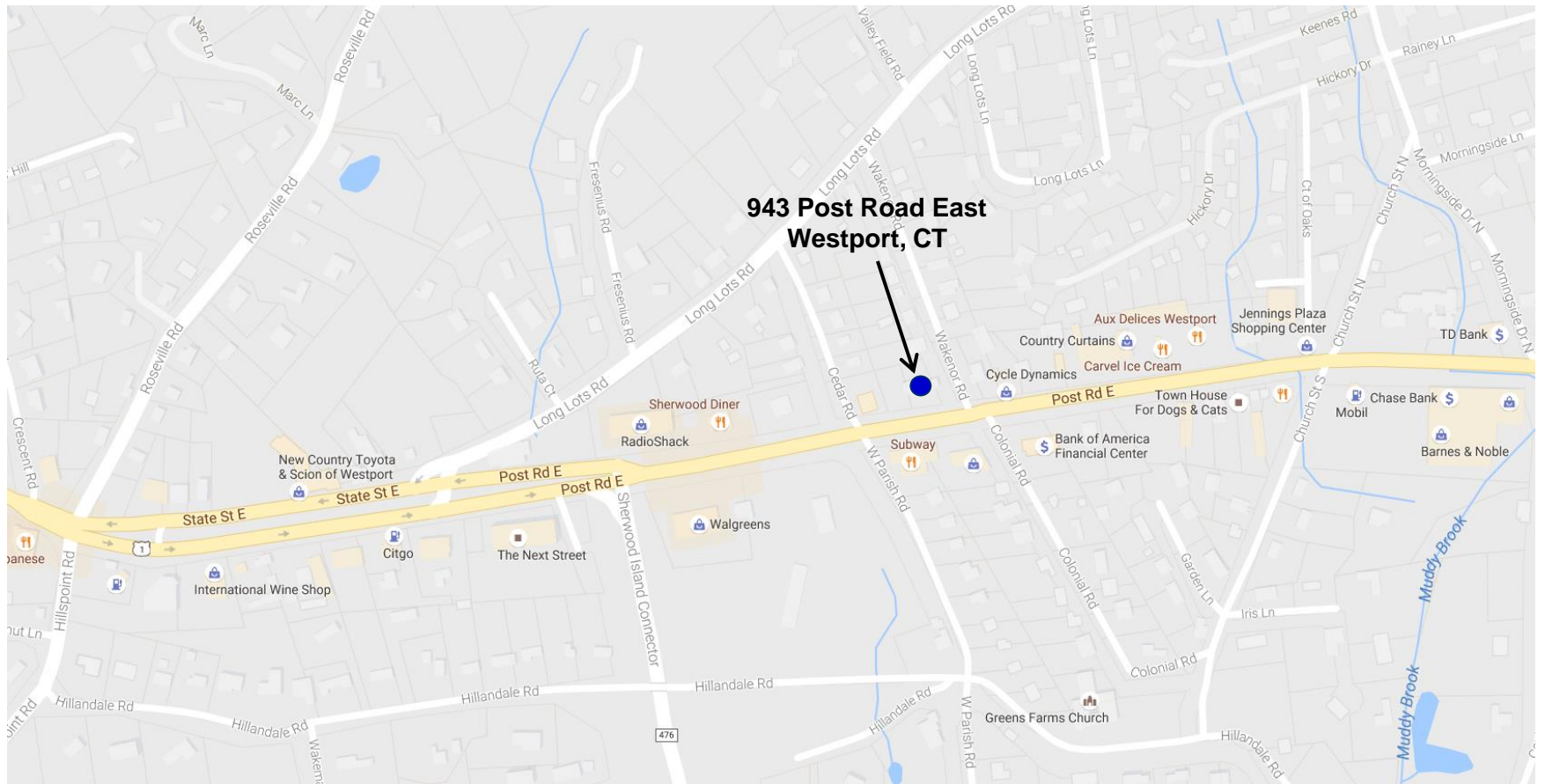
10-31-16



Aerial



Map



Franco Fellah
Executive Vice President
HK Group
253 Riverside Avenue
Westport, CT 06880

O: 203.454.8700
C: 203.981.3476

The logo consists of the letters 'H' and 'K' in a blue, serif font, centered within a white square. The square is positioned on a dark blue vertical bar that runs down the left side of the page.

HK