



# 634 Fairview Road

Simpsonville, SC 29680



## Property Features

- 0.2 acres (4,000 sf office pad)
- Located in Fairview Office Park
- Less than 1/4 mile from I-385
- One mile from Hillcrest Hospital
- Sale price: \$59,000

For more information:

**Scott Jones, SIOR**

864 678 5921 • [sjones@naiearlefurman.com](mailto:sjones@naiearlefurman.com)

**John Stathakis, II**

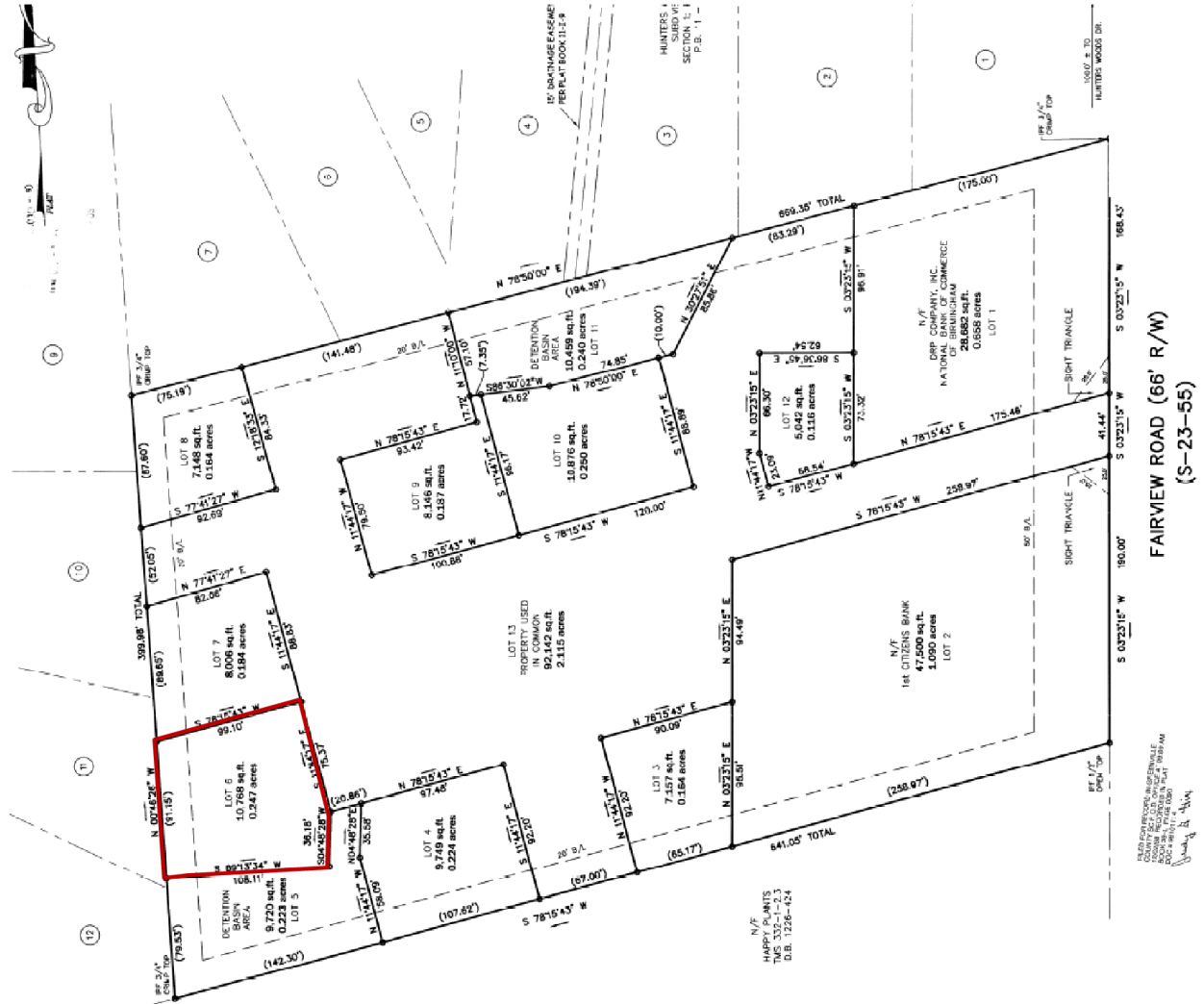
864 678 5931 • [jstathakis@naiearlefurman.com](mailto:jstathakis@naiearlefurman.com)

Demographics	1 Mile	3 Miles	5 Miles
Total Population:	4,593	31,122	67,596
Total Households:	1,802	11,855	25,352
Household Income:	\$63,942	\$67,916	\$68,924

NO WARRANTY OR REPRESENTATION, EXPRESS OR IMPLIED, IS MADE AS TO THE ACCURACY OF THE INFORMATION CONTAINED HEREIN, AND THE SAME IS SUBMITTED SUBJECT TO ERRORS, OMISSIONS, CHANGE OF PRICE, RENTAL OR OTHER CONDITIONS, PRIOR SALE, LEASE OR FINANCING, OR WITHDRAWAL WITHOUT NOTICE, AND OF ANY SPECIAL LISTING CONDITIONS IMPOSED BY OUR PRINCIPALS NO WARRANTIES OR REPRESENTATIONS ARE MADE AS TO THE CONDITION OF THE PROPERTY OR ANY HAZARDS CONTAINED THEREIN ARE ANY TO BE IMPLIED.

For Sale

# 634 Fairview Road



FAIRVIEW ROAD (66' R/W)  
(S-23-55)

14 LOTS TO BE OPENED IN LOT 13  
AS SHOWN IN PLAT TMS 332-1-23  
D.B. 1226-424  
DATE 08/11/2014