

11 Willow Road Ayer, MA

For Lease
Warehouse/Office Space
\$7.50 PSF NNN



Commercial / Industrial Space with Offices!

Property Details:

- Drive in Door 9 x 12
- Shared Loading Dock
- 3,500+/- sf office
- 10,500+/- sf Manufacturing / Warehouse
- Finished Office Space
- Ample Parking
- 600 Amps/480 Volts

Impeccable Industrial/Manufacturing/Warehouse building located close to I-495 and Rte. 2, this Industrial space offers 2 shared loading docks and 1 drive in overhead door. Open concept office space featuring a conference room, reception area, conference room, 2 bathrooms. The warehouse features 2 bathrooms with locker room and showers. Space is available for immediate occupancy.

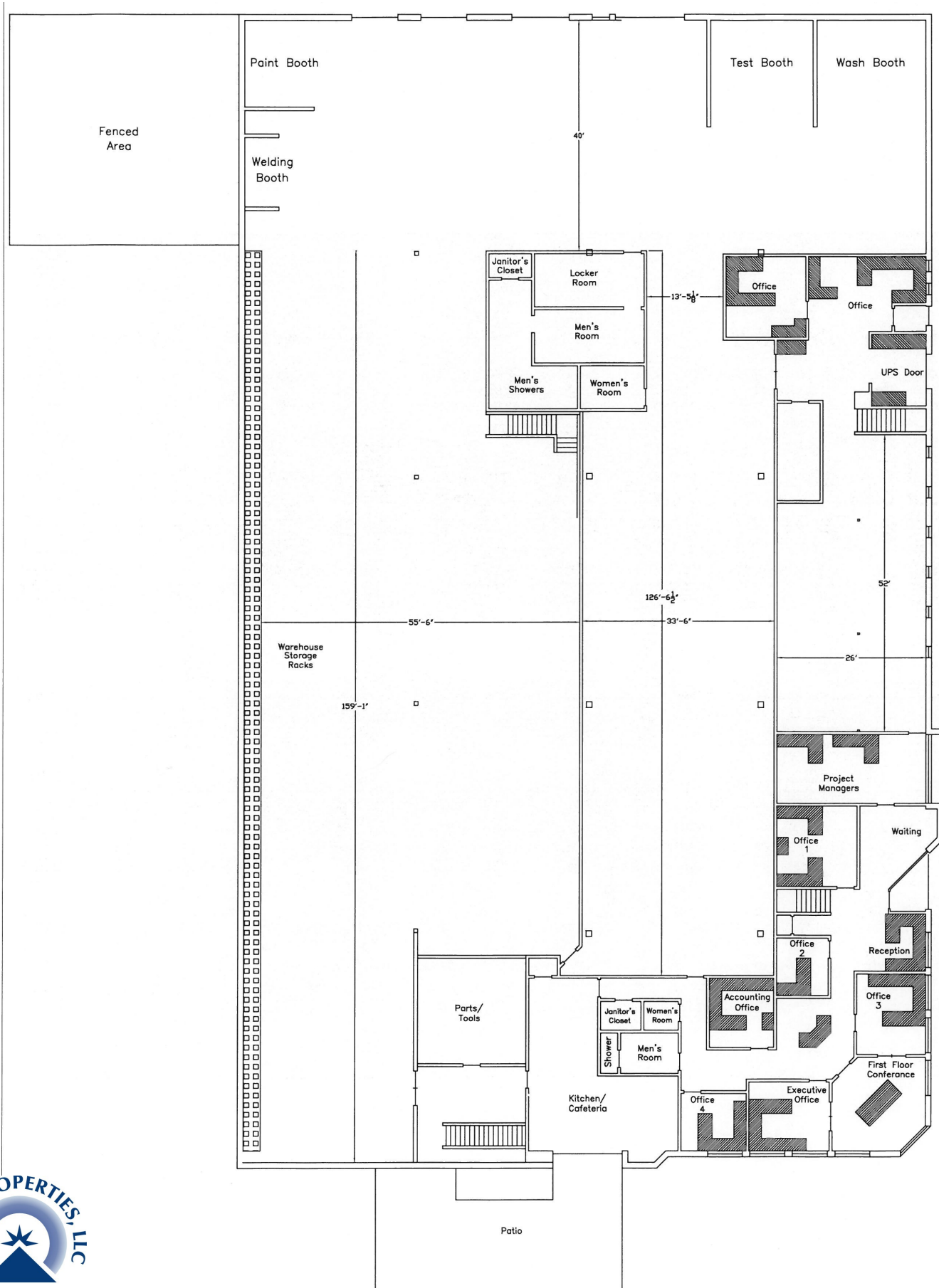
Disclaimer: The Evaluation Material contains information provided by the Owner and obtained by the Broker. While the information is believed to be accurate, Receiving Party should independently evaluate its completeness and accuracy before making an offer. This Evaluation Material is subject to prior placement, errors, omissions, changes or withdrawal without notice and does not constitute a recommendation, endorsement or advice as to the value of the Property by Disclosing Party.



Call for an appointment
Tom Caldarone 978.397.4227
George Robb 857.891.7254

Omni Properties, LLC
6 Lyberty Way Suite 203 Westford MA
www.omniproperties.com
978.369.4884

First Floor



Second Floor

