

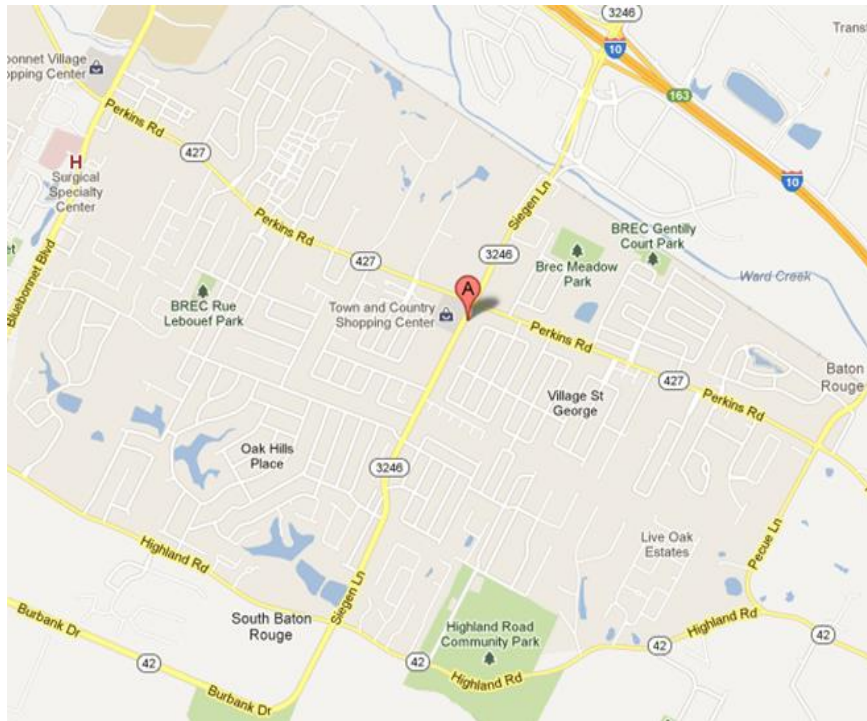


## 9191, Ste 6A Siegen Ln

Baton Rouge, LA 70809

### Property Features

- 1,923 SF of Class A office space
- For Lease: \$17.50/SF Annual
- Located in Versailles Office Park
- Siegen- between Perkins Rd. and Highland Rd.
- Easy access to I-10



**Ty Gose, CCIM**   **Michael Cashio**

225.295.0800

ty@latterblum.com

225.247.9812

mcashio@latterblum.com

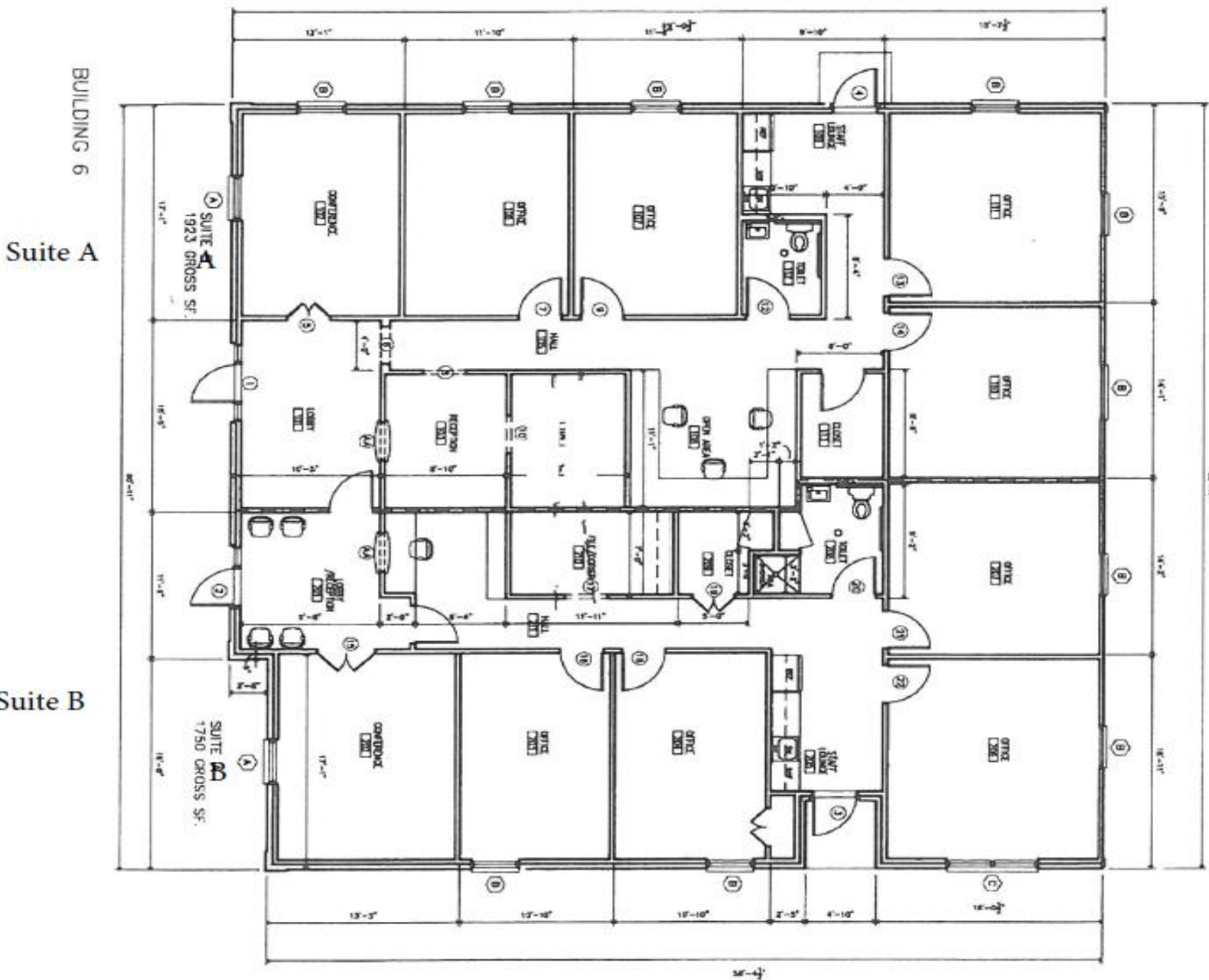
LICENSED IN LOUISIANA. NO WARRANTY OR REPRESENTATION, EXPRESS OR IMPLIED, IS MADE AS TO THE ACCURACY OF THE INFORMATION CONTAINED HEREIN, AND THE SAME IS SUBMITTED SUBJECT TO ERRORS, OMISSIONS, CHANGE OF PRICE, RENTAL OR OTHER CONDITIONS, PRIOR SALE, LEASE OR FINANCING, OR WITHDRAWAL WITHOUT NOTICE, AND OF ANY SPECIAL LISTING CONDITIONS IMPOSED BY OUR PRINCIPALS NO WARRANTIES OR REPRESENTATIONS ARE MADE AS TO THE CONDITION OF THE PROPERTY OR ANY HAZARDS CONTAINED THEREIN ARE ANY TO BE IMPLIED.

1700 City Farm Drive  
Baton Rouge, LA 70806 USA  
225.295.0800

[www.latterblum.com](http://www.latterblum.com)

## 9191 Siegen Lane

Baton Rouge, LA 70809



**Ty Gose, CCIM** **Michael Cashio**

225.295.0800

ty@latterblum.com

225.247.9812

mcashio@latterblum.com

LICENSED IN LOUISIANA. NO WARRANTY OR REPRESENTATION, EXPRESS OR IMPLIED, IS MADE AS TO THE ACCURACY OF THE INFORMATION CONTAINED HEREIN, AND THE SAME IS SUBMITTED SUBJECT TO ERRORS, OMISSIONS, CHANGE OF PRICE, RENTAL OR OTHER CONDITIONS, PRIOR SALE, LEASE OR FINANCING, OR WITHDRAWAL WITHOUT NOTICE, AND OF ANY SPECIAL LISTING CONDITIONS IMPOSED BY OUR PRINCIPALS NO WARRANTIES OR REPRESENTATIONS ARE MADE AS TO THE CONDITION OF THE PROPERTY OR ANY HAZARDS CONTAINED THEREIN ARE ANY TO BE IMPLIED.

1700 City Farm Drive  
 Baton Rouge, LA 70806 USA  
 225.295.0800

[www.latterblum.com](http://www.latterblum.com)